

# Converting Colors

Android(4292068548)

Have a look what the booklet for  
Android(4292068548) contains.

<b>Android(4292068548)</b> .....	3
<i><b>Conversions</b></i> .....	4
<i><b>Details</b></i> .....	6
<i><b>Harmonies</b></i> .....	11
<i><b>Previews</b></i> .....	23
<i><b>Color Blindness Simulation</b></i> .....	26
<i><b>CSS Examples</b></i> .....	29

# **Color**

**Android(4292068548)**

# Conversions

## Conversions Part 1

<b>Format</b>	<b>Color</b>
Hex	D3C4C4
RGB	211, 196, 196
RGB Percent	83%, 77%, 77%
CMY	0.1725, 0.2314, 0.2314
CMYK	0.00, 0.07, 0.07, 0.17
HSL	0°, 15%, 80%
HSV	0°, 7%, 83%
XYZ	56.5677, 57.3143, 60.3059
YIQ	200.4850, 8.9400, 3.1800

# Conversions

## Conversions Part 2

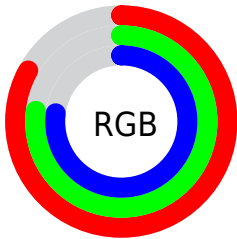
Format	Color
<a href="#">RYB</a>	<a href="#">211, 196, 196</a>
Decimal	<a href="#">13878468</a>
CIELab	<a href="#">80.36, 5.25, 1.88</a>
CIElCh	<a href="#">80, 5.578, 19.744</a>
Yxy	<a href="#">57.3143, 0.3248, 0.3290</a>
Android (android.graphics.Color)	<a href="#">4292068548</a> ( <a href="#">0xFFD3C4C4</a> )
YUV	<a href="#">200.4850, -2.2111, 9.2217</a>
Hunter-Lab	<a href="#">75.7062, 0.8895, 5.7652</a>

# Details

The Android color `4292068548` is a light color, and the websafe version is hex `CCCCCC`. A complement of this color would be `4291089363`, and the grayscale version is `4291414473`.

A 20% lighter version of the original color is `4294966781`, and `4288450190` is the 20% darker color. If you saturate the color by 10%, you get `4292063151`, and if you desaturate by 10%, it is `4292073945`.

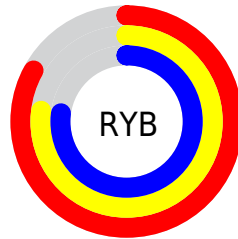
# Distribution



Red (83%)

Green (77%)

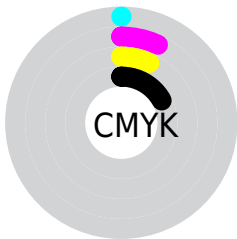
Blue (77%)



Red (83%)

Yellow (77%)

Blue (77%)

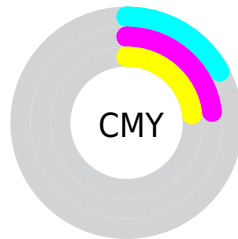


Cyan (0%)

Magenta (7%)

Yellow (7%)

Black (17%)



Cyan (17%)

Magenta (23%)

Yellow (23%)

# Brightness & Saturation Gradients

These gradients show how the Android color 4292068548 changes by changing the brightness by 10 percent. The first figure shows a shift by +10% for each color and the second figure -10%.

Similar to the brightness gradients but the following saturation gradients show a change of the Android color 4292068548 by changing the saturation by 10% instead.





4292068548



4292068548

4294967295



4290226601



4294966781



4288450190



4286739829



4285095004



4283516229



4282002990



4280556058



4279173120



4278190080

 4292068548

 4292068548

 4292063151

 4292073945

 4292057754

 4292079342

 4292052357

 4292083711

 4292046960

 4292041563

 4292035909

 4292030512

 4292025115

 4292019718

# Harmonies

## Analogous

The Analogous color harmony consists of three colors that are next to each other on the color wheel.



4291937481



4292068548



4292003264

# Triad

The Triadic color harmony groups three colors that are evenly spaced from another and form a triangle on the color wheel.



4292068548



4290955968



4290824401

# Complementary

The Complementary color scheme is a pair of colors which are on the opposite of each other on the color wheel.



4292068548



4291089363

# Split Complementary

Split-complementary colors differ from the complementary color scheme. The scheme consists of three colors, the original color and two neighbors of the complement color.



4290562767



4292068548



4290628293

# Square

The Square scheme is like the rectangle color scheme, but the four colors are evenly spaced on the color wheel.



4292068548



4291348670



4290497227



4291217361

# Rectangle

The Rectangle color scheme consists of four colors that form a rectangle on the color wheel.



4292068548



4291806910



4290497227



4290759121



# Sweetspot

The Sweet Spot groups the original color and five complimentary colors.



4292068548



4294966010



4292068563



4286610813



4278190080



4286611584

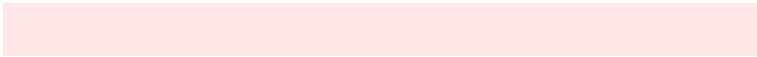


# Same Dimension

The Same Dimension uses a secret algorithm to generate beautiful new colors.



4292068548



4294961384



4292070340



4285095518



4289200128



4280877056

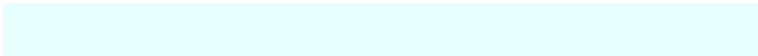


# Inverse Universe

The Inverse Universe completely reimagines the original color for something new.



4291089363



4293459967



4291087315



4284377449



4278233256

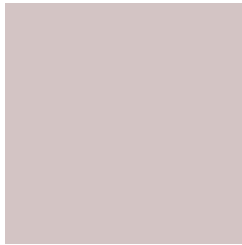


4278200617



# Previews

## White Background



This preview shows how the Android color 4292068548 looks on a white background.

## Color Contrast Check

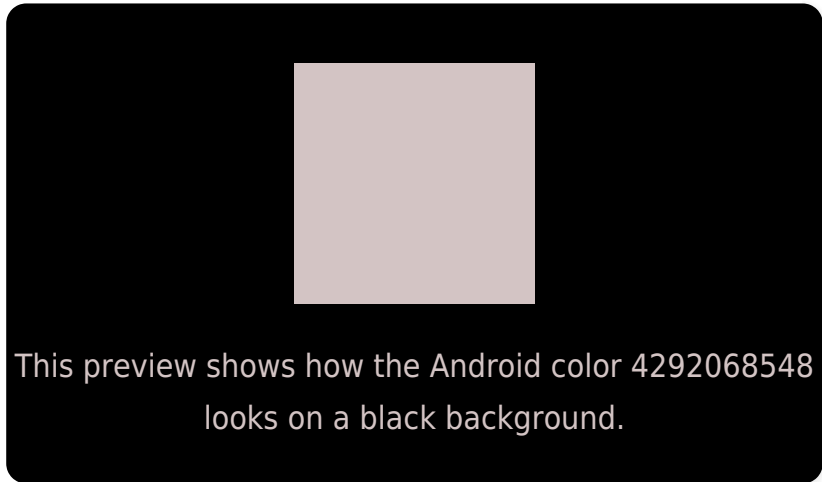
Large Text (above 18pt) WCAG AA × Fail

Any Text WCAG AA × Fail

Large Text (above 18pt) WCAG AAA × Fail

Any Text WCAG AAA × Fail

# Black Background



## Color Contrast Check

Large Text (above 18pt) WCAG AA ✓ Pass

Any Text WCAG AA ✓ Pass

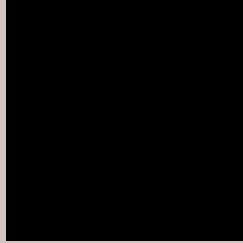
Large Text (above 18pt) WCAG AAA ✓ Pass

Any Text WCAG AAA ✓ Pass

If you want to check with other color combinations, try the [Color Contrast Checker](#).



# Android 4292068548 Background



This preview shows how black text looks on a background with the Android color 4292068548.



This preview shows how white text looks on a background with the Android color 4292068548.

# Color Blindness Simulation

Color vision deficiency is a very complex topic, and I could not describe the different causes any better than Wikipedia does, so if you want to learn more, you should check out their [article about color blindness](#).

## Dichromacy



**Original Color**  
4292068548

**Protanopia**  
4291544773

**Deuteranopia**  
4292657605



**Tritanopia**  
4292199121

# Trichromacy



**Original Color**  
4292068548

**Protanomaly**  
4291741125

**Deuteranomaly**  
4292461253

**Tritanomaly**  
4292133836

# Monochromacy



**Original Color**  
4292068548

**Achromatopsia**  
4291348680

**Achromatomaly**  
4291610567

# CSS Examples

## Text

The CSS property to change the color of the text to Android 4292068548 is called "color". The color property can be set on classes, ids or directly on the HTML element.

This example shows how text in the color `rgb(211, 196, 196)` looks like.

```
.text, #text, p{  
    color:rgb(211, 196, 196)  
}
```

If you want to add a text shadow in that color use the text-shadow property, you can generate a text shadow directly with our [CSS Text Shadow Generator](#).

Here you see how black text with a 4 pixel rgb(211, 196, 196) colored shadow looks like.

```
.shadow{ text-shadow: 4px 4px 2px rgb(211, 196, 196) }
```

## Border

The CSS property to change the border of an element to Android 4292068548 is called "border". The border property can be set on classes, ids or directly on the HTML element.

This example shows the color as border, it can be applied via the CSS property "border" or "border-color".

```
.border, #border, table{ border:4px solid rgb(211, 196, 196) }
```

If only the border color should be changed use the property `border-color`.

```
.border{ border-color:rgb(211, 196, 196) }
```

If you want to add a box shadow in that color use:

Here you see how a box with a 4 pixel `rgb(211, 196, 196)` colored shadow looks like.

```
.boxshadow{ -moz-box-shadow:4px 4px 4px 4px rgb(211, 196, 196); -webkit-box-shadow:4px 4px 4px 4px rgb(211, 196, 196); box-shadow:4px 4px 4px 4px rgb(211, 196, 196) }
```

# Background

The CSS property to change the background color of an element to Android 4292068548 is called "background". The background property can be set on classes, ids or directly on the HTML element.

```
.background, #background, body{  
background: rgb(211, 196, 196) }
```

If only the background color should be changed can be used:

```
.background{ background-color: rgb(211,  
196, 196) }
```

This example shows the color as background, it is applied via the CSS property "background".

To optimize and compress your CSS code, you can use our [online CSS compressor and optimizer](#) based on csstidy. If you want to create a linear or radial gradient as background or border, check our [CSS Gradient Generator](#).



Hey! You found this booklet interesting? Support Converting Colors with the new Membership Option!

The pro membership hides all ads, plus gives you double the colors in the color bucket, and more awesome pro features!

**[Learn more, Memberships starting at \\$2.50/m!](#)**

**Follow me  
on Twitter!**

@ConvertingColor