

Converting Colors

Android(4292095082)

Have a look what the booklet for
Android(4292095082) contains.

Android(4292095082)	3
<i>Conversions</i>	4
<i>Details</i>	6
<i>Harmonies</i>	11
<i>Previews</i>	23
<i>Color Blindness Simulation</i>	26
<i>CSS Examples</i>	29

Color

Android(4292095082)

Conversions

Conversions Part 1

Format	Color
Hex	D42C6A
RGB	212, 44, 106
RGB Percent	83%, 17%, 42%
CMY	0.1686, 0.8275, 0.5843
CMYK	0.00, 0.79, 0.50, 0.17
HSL	338°, 66%, 50%
HSV	338°, 79%, 83%
XYZ	30.6536, 16.8390, 15.2703
YIQ	101.3000, 80.2260, 54.8980

Conversions

Conversions Part 2

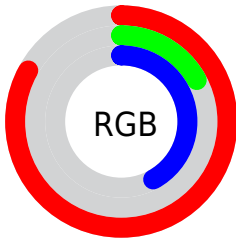
Format	Color
R_{YB}	212, 44, 106
Decimal	13905002
CIE _{Lab}	48.06, 66.78, 6.53
CIE _{LCh}	48, 67.100, 5.586
Yxy	16.8390, 0.4884, 0.2683
Android (android.graphics.Color)	4292095082 (0xFFD42C6A)
YUV	101.3000, 2.3171, 97.0839
Hunter-Lab	41.0354, 61.5283, 6.6615

Details

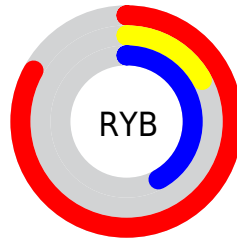
The Android color **4292095082** is a dark color, and the websafe version is hex **CC3366**. The color can be described as dark washed rose. A complement of this color would be **4281128086**, and the grayscale version is **4284835173**.

A 20% lighter version of the original color is **4294929309**, and **4288086075** is the 20% darker color. If you saturate the color by 10%, you get **4292089693**, and if you desaturate by 10%, it is **4292100471**.

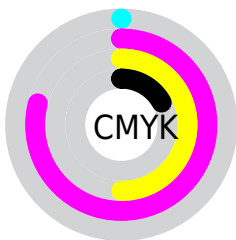
Distribution



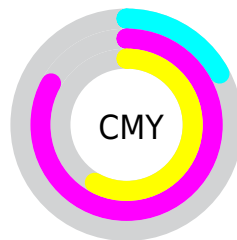
- Red (83%)
- Green (17%)
- Blue (42%)



- Red (83%)
- Yellow (17%)
- Blue (42%)



- Cyan (0%)
- Magenta (79%)
- Yellow (50%)
- Black (17%)



- Cyan (17%)
- Magenta (83%)
- Yellow (58%)

Brightness & Saturation Gradients

These gradients show how the Android color 4292095082 changes by changing the brightness by 10 percent. The first figure shows a shift by +10% for each color and the second figure -10%.

Similar to the brightness gradients but the following saturation gradients show a change of the Android color 4292095082 by changing the saturation by 10% instead.

 4292095082

 4292095082

4294967295

 4290052178

 4294929309

 4288086075

 4294936760

 4286119974

 4294944211

 4284153873

 4294951664

 4282384387

 4294959103

 4280090625

4294966783

 4278190080

 4292095082

 4292095082

 4292089693

 4292100471

 4292084303

 4292105861

 4292083790

 4292111506

 4292116896

 4292122285

 4292127674

 4292133064

 4292138709

 4292144098

Harmonies

Analogous

The Analogous color harmony consists of three colors that are next to each other on the color wheel.



4290592418



4292095082



4291641395

Triad

The Triadic color harmony groups three colors that are evenly spaced from another and form a triangle on the color wheel.



4292095082



4282679552



4278224090

Complementary

The Complementary color scheme is a pair of colors which are on the opposite of each other on the color wheel.



4292095082



4281128086

Split Complementary

Split-complementary colors differ from the complementary color scheme. The scheme consists of three colors, the original color and two neighbors of the complement color.



4278225587



4292095082



4278224960

Square

The Square scheme is like the rectangle color scheme, but the four colors are evenly spaced on the color wheel.



4292095082



4286673664



4278225787



4278220516

Rectangle

The Rectangle color scheme consists of four colors that form a rectangle on the color wheel.



4292095082



4290401289



4278225787



4278224847

Sweetspot

The Sweet Spot groups the original color and five complimentary colors.



4292095082



4294951640



4287900884



4286602088



4278190080



4286611584

Same Dimension

The Same Dimension uses a secret algorithm to generate beautiful new colors.



4292095082



4294905190



4292100140



4285227108



4289396799



4281008144

Inverse Universe

The Inverse Universe completely reimagines the original color for something new.



4292095082



4294905190



4281123028



4285227108



4289396799



4281008144

Previews

White Background



This preview shows how the Android color 4292095082 looks on a white background.

Color Contrast Check

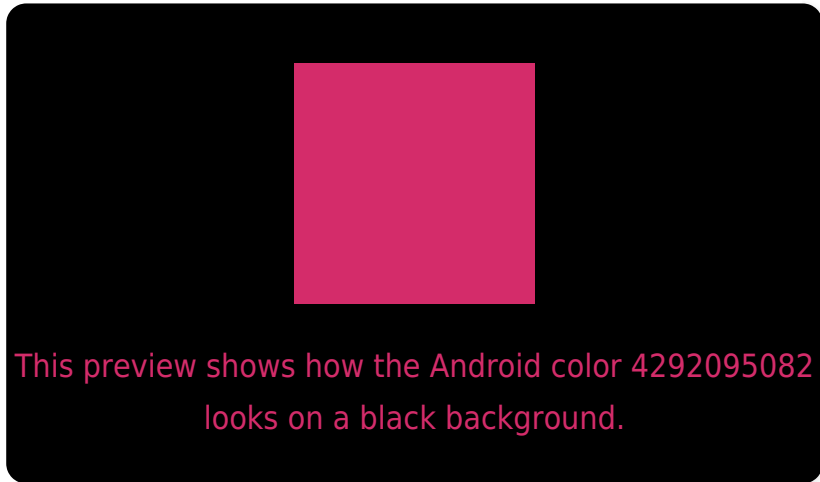
Large Text (above 18pt) WCAG AA ✓ Pass

Any Text WCAG AA ✓ Pass

Large Text (above 18pt) WCAG AAA ✓ Pass

Any Text WCAG AAA × Fail

Black Background



Color Contrast Check

Large Text (above 18pt) WCAG AA ✓ Pass

Any Text WCAG AA × Fail

Large Text (above 18pt) WCAG AAA × Fail

Any Text WCAG AAA × Fail

If you want to check with other color combinations, try the [Color Contrast Checker](#).

Android 4292095082 Background



This preview shows how black text looks on a background with the Android color 4292095082.



This preview shows how white text looks on a background with the Android color 4292095082.

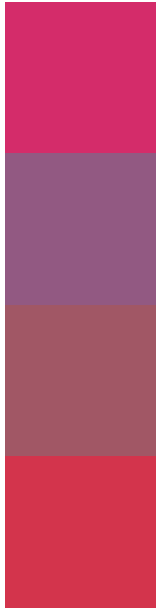
Color Blindness Simulation

Color vision deficiency is a very complex topic, and I could not describe the different causes any better than Wikipedia does, so if you want to learn more, you should check out their [article about color blindness](#).

Dichromacy



Trichromacy



Original Color
4292095082

Protanomaly
4287781250

Deuteranomaly
4288763749

Tritanomaly
4292031564

Monochromacy



Original Color
4292095082

Achromatopsia
4284835173

Achromatomaly
4287451239

CSS Examples

Text

The CSS property to change the color of the text to Android 4292095082 is called "color". The color property can be set on classes, ids or directly on the HTML element.

This example shows how text in the color `rgb(212, 44, 106)` looks like.

```
.text, #text, p{  
    color:rgb(212, 44, 106)  
}
```

If you want to add a text shadow in that color use the text-shadow property, you can generate a text shadow directly with our [CSS Text Shadow Generator](#).

Here you see how black text with a 4 pixel rgb(212, 44, 106) colored shadow looks like.

```
.shadow{ text-shadow: 4px 4px 2px rgb(212, 44, 106) }
```

Border

The CSS property to change the border of an element to Android 4292095082 is called "border". The border property can be set on classes, ids or directly on the HTML element.

This example shows the color as border, it can be applied via the CSS property "border" or "border-color".

```
.border, #border, table{ border:4px solid rgb(212, 44, 106) }
```

If only the border color should be changed use the property border-color.

```
.border{ border-color:rgb(212, 44, 106) }
```

If you want to add a box shadow in that color use:

Here you see how a box with a 4 pixel rgb(212, 44, 106) colored shadow looks like.

```
.boxshadow{ -moz-box-shadow:4px 4px 4px  
4px rgb(212, 44, 106); -webkit-box-  
shadow:4px 4px 4px 4px rgb(212, 44, 106);  
box-shadow:4px 4px 4px 4px rgb(212, 44,  
106) }
```

Background

The CSS property to change the background color of an element to Android 4292095082 is called "background". The background property can be set on classes, ids or directly on the HTML element.

```
.background, #background, body{  
background: rgb(212, 44, 106) }
```

If only the background color should be changed can be used:

```
.background{ background-color: rgb(212, 44,  
106) }
```

This example shows the color as background, it is applied via the CSS property "background".

To optimize and compress your CSS code, you can use our [online CSS compressor and optimizer](#) based on csstidy. If you want to create a linear or radial gradient as background or border, check our [CSS Gradient Generator](#).

Hey! You found this booklet interesting? Support Converting Colors with the new Membership Option!

The pro membership hides all ads, plus gives you double the colors in the color bucket, and more awesome pro features!

[Learn more, Memberships starting at \\$2.50/m!](#)

**Follow me
on Twitter!**

@ConvertingColor