

Converting Colors

Android(4292106888)

Have a look what the booklet for
Android(4292106888) contains.

Android(4292106888)	3
<i>Conversions</i>	4
<i>Details</i>	6
<i>Harmonies</i>	11
<i>Previews</i>	23
<i>Color Blindness Simulation</i>	26
<i>CSS Examples</i>	29

Color

Android(4292106888)

Conversions

Conversions Part 1

Format	Color
Hex	D45A88
RGB	212, 90, 136
RGB Percent	83%, 35%, 53%
CMY	0.1686, 0.6471, 0.4667
CMYK	0.00, 0.58, 0.36, 0.17
HSL	337°, 59%, 59%
HSV	337°, 58%, 83%
XYZ	35.2515, 23.0870, 25.8908
YIQ	131.7220, 57.9460, 40.1700

Conversions

Conversions Part 2

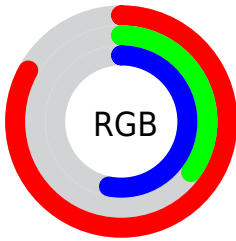
Format	Color
R_{YB}	212, 90, 136
Decimal	13916808
CIE Lab	55.16, 52.51, -1.21
CIE LCh	55, 52.521, 358.676
Yxy	23.0870, 0.4185, 0.2741
Android (android.graphics.Color)	4292106888 (0xFFD45A88)
YUV	131.7220, 2.1091, 70.4038
Hunter-Lab	48.0489, 46.8725, 1.6862

Details

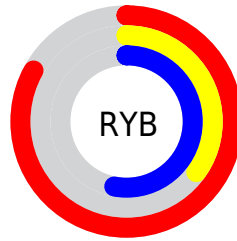
The Android color **4292106888** is a dark color, and the websafe version is hex **CC6699**. The color can be described as middle muted rose. A complement of this color would be **4284142758**, and the grayscale version is **4286874756**.

A 20% lighter version of the original color is **4294939069**, and **4288291158** is the 20% darker color. If you saturate the color by 10%, you get **4292101499**, and if you desaturate by 10%, it is **4292112277**.

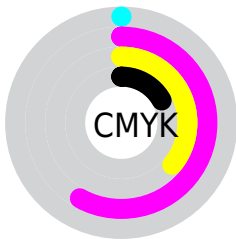
Distribution



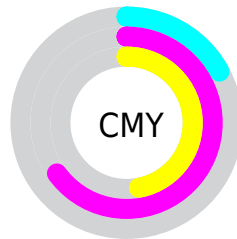
- Red (83%)
- Green (35%)
- Blue (53%)



- Red (83%)
- Yellow (35%)
- Blue (53%)



- Cyan (0%)
- Magenta (58%)
- Yellow (36%)
- Black (17%)



- Cyan (17%)
- Magenta (65%)
- Yellow (47%)

Brightness & Saturation Gradients

These gradients show how the Android color 4292106888 changes by changing the brightness by 10 percent. The first figure shows a shift by +10% for each color and the second figure -10%.

Similar to the brightness gradients but the following saturation gradients show a change of the Android color 4292106888 by changing the saturation by 10% instead.

 4292106888

 4292106888

4294967295

 4290199407

 4294939069

 4288291158

 4294946265

 4286382143

 4294953461

 4284547114

 4294960895

 4282777621

 4281073665

 4278190080

 4292106888

 4292106888

 4292101499

 4292112277

 4292096110

 4292117666

 4292090464

 4292123312

 4292085075

 4292128701

 4292083792

 4292134090

 4292139479

 4292144868

 4292149234

 4292149247

Harmonies

Analogous

The Analogous color harmony consists of three colors that are next to each other on the color wheel.



4290340532



4292106888



4292173659

Triad

The Triadic color harmony groups three colors that are evenly spaced from another and form a triangle on the color wheel.



4292106888



4285632046



4278228433

Complementary

The Complementary color scheme is a pair of colors which are on the opposite of each other on the color wheel.



4292106888



4284142758

Split Complementary

Split-complementary colors differ from the complementary color scheme. The scheme consists of three colors, the original color and two neighbors of the complement color.



4278229678



4292106888



4281308754

Square

The Square scheme is like the rectangle color scheme, but the four colors are evenly spaced on the color wheel.



4292106888



4288577825



4278229633



4278225631

Rectangle

The Rectangle color scheme consists of four colors that form a rectangle on the color wheel.



4292106888



4291390017



4278229633



4278228936

Sweetspot

The Sweet Spot groups the original color and five complimentary colors.



4292106888



4294956260



4289026772



4286604912



4278190080



4286611584

Same Dimension

The Same Dimension uses a secret algorithm to generate beautiful new colors.



4292106888



4294922129



4292110426



4285227108



4289396800



4281008144

Inverse Universe

The Inverse Universe completely reimagines the original color for something new.



4292106888



4294922129



4284139220



4285227108



4289396800



4281008144

Previews

White Background



This preview shows how the Android color 4292106888 looks on a white background.

Color Contrast Check

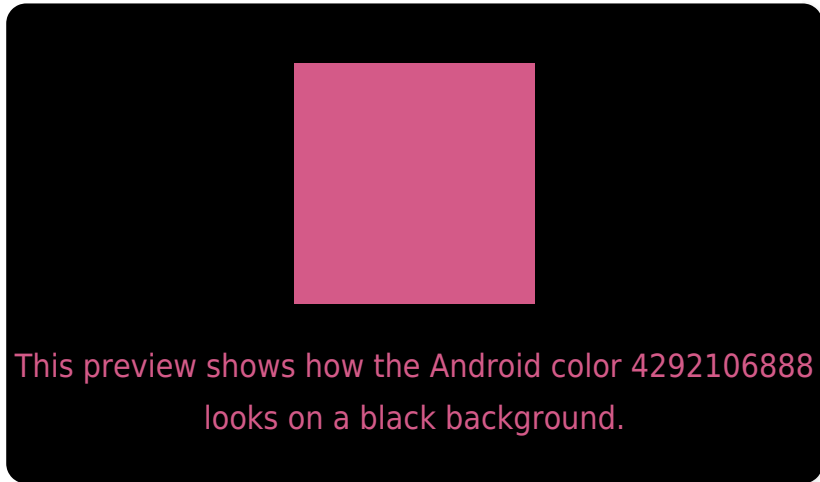
Large Text (above 18pt) WCAG AA ✓ Pass

Any Text WCAG AA ✗ Fail

Large Text (above 18pt) WCAG AAA ✗ Fail

Any Text WCAG AAA ✗ Fail

Black Background



Color Contrast Check

Large Text (above 18pt) WCAG AA ✓ Pass

Any Text WCAG AA ✓ Pass

Large Text (above 18pt) WCAG AAA ✓ Pass

Any Text WCAG AAA × Fail

If you want to check with other color combinations, try the [Color Contrast Checker](#).

Android 4292106888 Background



This preview shows how black text looks on a background with the Android color 4292106888.



This preview shows how white text looks on a background with the Android color 4292106888.

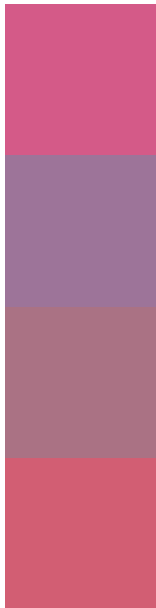
Color Blindness Simulation

Color vision deficiency is a very complex topic, and I could not describe the different causes any better than Wikipedia does, so if you want to learn more, you should check out their [article about color blindness](#).

Dichromacy



Trichromacy



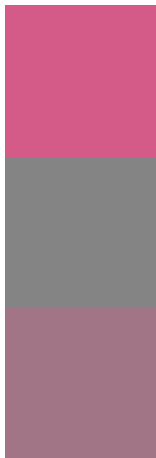
Original Color
4292106888

Protanomaly
4288509081

Deuteranomaly
4289360516

Tritanomaly
4291976819

Monochromacy



Original Color
4292106888

Achromatopsia
4286874756

Achromatomaly
4288771461

CSS Examples

Text

The CSS property to change the color of the text to Android 4292106888 is called "color". The color property can be set on classes, ids or directly on the HTML element.

This example shows how text in the color `rgb(212, 90, 136)` looks like.

```
.text, #text, p{  
    color:rgb(212, 90, 136)  
}
```

If you want to add a text shadow in that color use the text-shadow property, you can generate a text shadow directly with our [CSS Text Shadow Generator](#).

Here you see how black text with a 4 pixel rgb(212, 90, 136) colored shadow looks like.

```
.shadow{ text-shadow: 4px 4px 2px rgb(212, 90, 136) }
```

Border

The CSS property to change the border of an element to Android 4292106888 is called "border". The border property can be set on classes, ids or directly on the HTML element.

This example shows the color as border, it can be applied via the CSS property "border" or "border-color".

```
.border, #border, table{ border:4px solid rgb(212, 90, 136) }
```

If only the border color should be changed use the property `border-color`.

```
.border{ border-color:rgb(212, 90, 136) }
```

If you want to add a box shadow in that color use:

Here you see how a box with a 4 pixel `rgb(212, 90, 136)` colored shadow looks like.

```
.boxshadow{ -moz-box-shadow:4px 4px 4px 4px rgb(212, 90, 136); -webkit-box-shadow:4px 4px 4px 4px rgb(212, 90, 136); box-shadow:4px 4px 4px 4px rgb(212, 90, 136) }
```

Background

The CSS property to change the background color of an element to Android 4292106888 is called "background". The background property can be set on classes, ids or directly on the HTML element.

```
.background, #background, body{  
background: rgb(212, 90, 136) }
```

If only the background color should be changed can be used:

```
.background{ background-color: rgb(212, 90,  
136) }
```

This example shows the color as background, it is applied via the CSS property "background".

To optimize and compress your CSS code, you can use our [online CSS compressor and optimizer](#) based on csstidy. If you want to create a linear or radial gradient as background or border, check our [CSS Gradient Generator](#).

Hey! You found this booklet interesting? Support Converting Colors with the new Membership Option!

The pro membership hides all ads, plus gives you double the colors in the color bucket, and more awesome pro features!

[Learn more, Memberships starting at \\$2.50/m!](#)

**Follow me
on Twitter!**

@ConvertingColor