

Converting Colors

Android(4292118911)

Have a look what the booklet for
Android(4292118911) contains.

Android(4292118911)	3
<i>Conversions</i>	4
<i>Details</i>	6
<i>Harmonies</i>	11
<i>Previews</i>	23
<i>Color Blindness Simulation</i>	26
<i>CSS Examples</i>	29

Color

Android(4292118911)

Conversions

Conversions Part 1

Format	Color
Hex	D4897F
RGB	212, 137, 127
RGB Percent	83%, 54%, 50%
CMY	0.1686, 0.4627, 0.5020
CMYK	0.00, 0.35, 0.40, 0.17
HSL	7°, 50%, 66%
HSV	7°, 40%, 83%
XYZ	39.9278, 33.4207, 24.4251
YIQ	158.2850, 47.9100, 12.7900

Conversions

Conversions Part 2

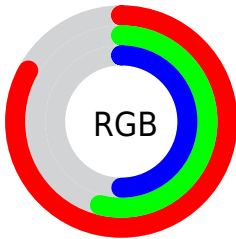
Format	Color
R _Y B	212, 138, 127
Decimal	13928831
CIE Lab	64.50, 27.49, 17.27
CIE LCh	65, 32.462, 32.144
Yxy	33.4207, 0.4084, 0.3418
Android (android.graphics.Color)	4292118911 (0xFFD4897F)
YUV	158.2850, -15.4235, 47.1081
Hunter-Lab	57.8106, 22.1152, 15.4173

Details

The Android color **4292118911** is a light color, and the websafe version is hex **CC9999**. A complement of this color would be **4286565076**, and the grayscale version is **4288585374**.

A 20% lighter version of the original color is **4294950836**, and **4288370254** is the 20% darker color. If you saturate the color by 10%, you get **4292114026**, and if you desaturate by 10%, it is **4292123796**.

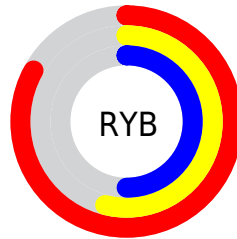
Distribution



Red (83%)

Green (54%)

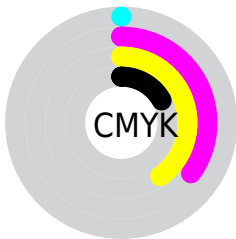
Blue (50%)



Red (83%)

Yellow (54%)

Blue (50%)

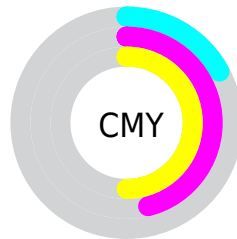


Cyan (0%)

Magenta (35%)

Yellow (40%)

Black (17%)



Cyan (17%)

Magenta (46%)

Yellow (50%)

Brightness & Saturation Gradients

These gradients show how the Android color 4292118911 changes by changing the brightness by 10 percent. The first figure shows a shift by +10% for each color and the second figure -10%.

Similar to the brightness gradients but the following saturation gradients show a change of the Android color 4292118911 by changing the saturation by 10% instead.



4292118911



4292118911

4294967295



4290211686



4294950836



4288370254



4294958031



4286529079



4294965484



4284753698



4283043596



4281401344



4278845440



4278190080



4292118911



4292118911

 4292114026

 4292123796

 4292109397

 4292128425

 4292104511

 4292133311

 4292099626

 4292138196

 4292094741

 4292143081

 4292090112

 4292147710

 4292149247

Harmonies

Analogous

The Analogous color harmony consists of three colors that are next to each other on the color wheel.



4292118171



4292118911



4291203434

Triad

The Triadic color harmony groups three colors that are evenly spaced from another and form a triangle on the color wheel.



4292118911



4285377152



4286029526

Complementary

The Complementary color scheme is a pair of colors which are on the opposite of each other on the color wheel.



4292118911



4286565076

Split Complementary

Split-complementary colors differ from the complementary color scheme. The scheme consists of three colors, the original color and two neighbors of the complement color.



4283082703



4292118911



4283018398

Square

The Square scheme is like the rectangle color scheme, but the four colors are evenly spaced on the color wheel.



4292118911



4287603818



4281510842



4288910541

Rectangle

The Rectangle color scheme consists of four colors that form a rectangle on the color wheel.



4292118911



4290222179



4281510842



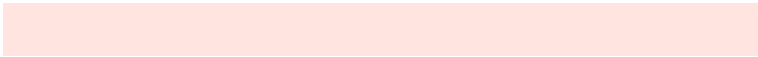
4285047509

Sweetspot

The Sweet Spot groups the original color and five complimentary colors.



4292118911



4294960352



4292116426



4286607470



4278190080



4286611584

Same Dimension

The Same Dimension uses a secret algorithm to generate beautiful new colors.



4292118911



4294939525



4292129663



4285227616



4289401856



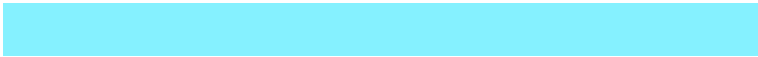
4281009408

Inverse Universe

The Inverse Universe completely reimagines the original color for something new.



4286565076



4286968319



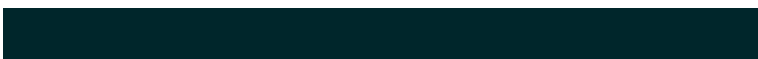
4286554324



4284508779



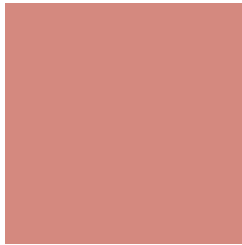
4278228907



4278199851

Previews

White Background



This preview shows how the Android color 4292118911 looks on a white background.

Color Contrast Check

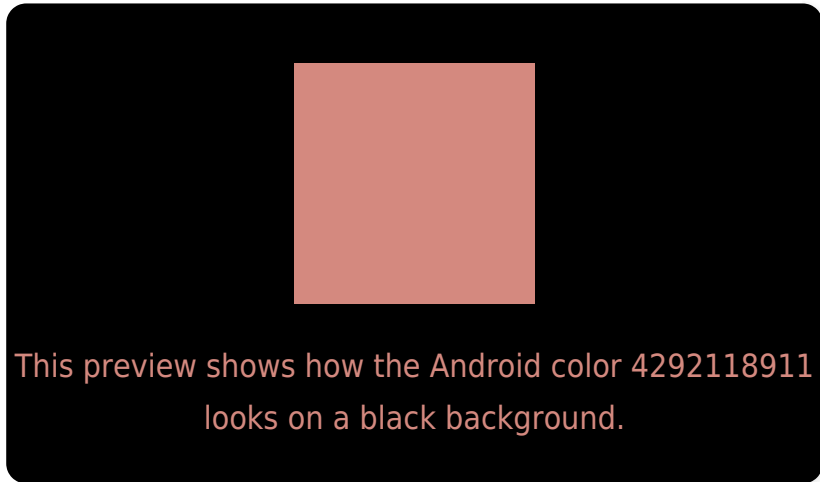
Large Text (above 18pt) WCAG AA × Fail

Any Text WCAG AA × Fail

Large Text (above 18pt) WCAG AAA × Fail

Any Text WCAG AAA × Fail

Black Background



Color Contrast Check

Large Text (above 18pt) WCAG AA ✓ Pass

Any Text WCAG AA ✓ Pass

Large Text (above 18pt) WCAG AAA ✓ Pass

Any Text WCAG AAA ✓ Pass

If you want to check with other color combinations, try the [Color Contrast Checker](#).

Android 4292118911 Background



This preview shows how black text looks on a background with the Android color 4292118911.




This preview shows how white text looks on a background with the Android color 4292118911.

Color Blindness Simulation

Color vision deficiency is a very complex topic, and I could not describe the different causes any better than Wikipedia does, so if you want to learn more, you should check out their [article about color blindness](#).

Dichromacy





Tritanopia
4292249232

Trichromacy



Original Color
4292118911

Protanomaly
4290090373

Deuteranomaly
4290941566

Tritanomaly
4292183946

Monochromacy



Original Color
4292118911

Achromatopsia
4288585374

Achromatomaly
4289894035

CSS Examples

Text

The CSS property to change the color of the text to Android 4292118911 is called "color". The color property can be set on classes, ids or directly on the HTML element.

This example shows how text in the color `rgb(212, 137, 127)` looks like.

```
.text, #text, p{  
    color:rgb(212, 137, 127)  
}
```

If you want to add a text shadow in that color use the text-shadow property, you can generate a text shadow directly with our [CSS Text Shadow Generator](#).

Here you see how black text with a 4 pixel rgb(212, 137, 127) colored shadow looks like.

```
.shadow{ text-shadow: 4px 4px 2px rgb(212, 137, 127) }
```

Border

The CSS property to change the border of an element to Android 4292118911 is called "border". The border property can be set on classes, ids or directly on the HTML element.

This example shows the color as border, it can be applied via the CSS property "border" or "border-color".

```
.border, #border, table{ border:4px solid rgb(212, 137, 127) }
```

If only the border color should be changed use the property `border-color`.

```
.border{ border-color:rgb(212, 137, 127) }
```

If you want to add a box shadow in that color use:

Here you see how a box with a 4 pixel `rgb(212, 137, 127)` colored shadow looks like.

```
.boxshadow{ -moz-box-shadow:4px 4px 4px 4px rgb(212, 137, 127); -webkit-box-shadow:4px 4px 4px 4px rgb(212, 137, 127); box-shadow:4px 4px 4px 4px rgb(212, 137, 127) }
```

Background

The CSS property to change the background color of an element to Android 4292118911 is called "background". The background property can be set on classes, ids or directly on the HTML element.

```
.background, #background, body{  
background: rgb(212, 137, 127) }
```

If only the background color should be changed can be used:

```
.background{ background-color: rgb(212,  
137, 127) }
```

This example shows the color as background, it is applied via the CSS property "background".

To optimize and compress your CSS code, you can use our [online CSS compressor and optimizer](#) based on csstidy. If you want to create a linear or radial gradient as background or border, check our [CSS Gradient Generator](#).

Hey! You found this booklet interesting? Support Converting Colors with the new Membership Option!

The pro membership hides all ads, plus gives you double the colors in the color bucket, and more awesome pro features!

[Learn more, Memberships starting at \\$2.50/m!](#)

**Follow me
on Twitter!**

@ConvertingColor