

Converting Colors

Android(4292121518)

Have a look what the booklet for
Android(4292121518) contains.

Android(4292121518)	3
<i>Conversions</i>	4
<i>Details</i>	6
<i>Harmonies</i>	11
<i>Previews</i>	23
<i>Color Blindness Simulation</i>	26
<i>CSS Examples</i>	29

Color

Android(4292121518)

Conversions

Conversions Part 1

Format	Color
Hex	D493AE
RGB	212, 147, 174
RGB Percent	83%, 58%, 68%
CMY	0.1686, 0.4235, 0.3176
CMYK	0.00, 0.31, 0.18, 0.17
HSL	335°, 43%, 70%
HSV	335°, 31%, 83%
XYZ	45.2251, 37.9205, 44.9802
YIQ	169.5130, 30.0730, 22.1770

Conversions

Conversions Part 2

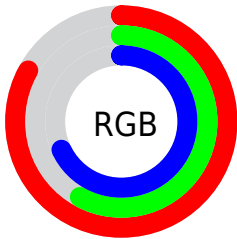
Format	Color
R _Y B	212, 147, 174
Decimal	13931438
CIE Lab	67.96, 28.44, -4.19
CIE LCh	68, 28.749, 351.617
Yxy	37.9205, 0.3530, 0.2960
Android (android.graphics.Color)	4292121518 (0xFFD493AE)
YUV	169.5130, 2.2121, 37.2611
Hunter-Lab	61.5796, 23.3290, -0.2020

Details

The Android color `4292121518` is a light color, and the websafe version is hex `CC99CC`. A complement of this color would be `4287878329`, and the grayscale version is `4289309097`.

A 20% lighter version of the original color is `4294953701`, and `4288438138` is the 20% darker color. If you saturate the color by 10%, you get `4292116130`, and if you desaturate by 10%, it is `4292126906`.

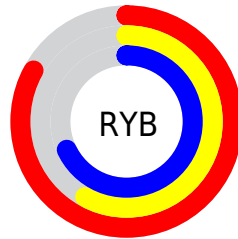
Distribution



Red (83%)

Green (58%)

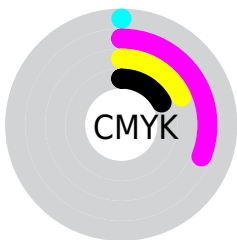
Blue (68%)



Red (83%)

Yellow (58%)

Blue (68%)

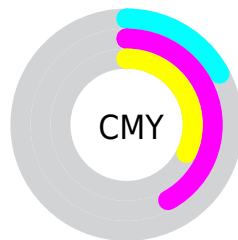


Cyan (0%)

Magenta (31%)

Yellow (18%)

Black (17%)



Cyan (17%)

Magenta (42%)

Yellow (32%)

Brightness & Saturation Gradients

These gradients show how the Android color 4292121518 changes by changing the brightness by 10 percent. The first figure shows a shift by +10% for each color and the second figure -10%.

Similar to the brightness gradients but the following saturation gradients show a change of the Android color 4292121518 by changing the saturation by 10% instead.

 4292121518

 4292121518

4294967295

 4290279827

 4294953701

 4288438138

 4294960895

 4286662497

 4284952393

 4283308083

 4281729310

 4280352771

 4278190080

 4292121518

 4292121518

 4292116130

 4292126906

 4292110741

 4292132295

 4292105097

 4292137939

 4292099708

 4292143328

 4292094320

 4292148716

 4292088932

 4292149240

 4292083800

 4292149247

Harmonies

Analogous

The Analogous color harmony consists of three colors that are next to each other on the color wheel.



4290812358



4292121518



4292514708

Triad

The Triadic color harmony groups three colors that are evenly spaced from another and form a triangle on the color wheel.



4292121518



4289047157



4284133837

Complementary

The Complementary color scheme is a pair of colors which are on the opposite of each other on the color wheel.



4292121518



4287878329

Split Complementary

Split-complementary colors differ from the complementary color scheme. The scheme consists of three colors, the original color and two neighbors of the complement color.



4283806904



4292121518



4287082629

Square

The Square scheme is like the rectangle color scheme, but the four colors are evenly spaced on the color wheel.



4292121518



4290748786



4285117597



4286163672

Rectangle

The Rectangle color scheme consists of four colors that form a rectangle on the color wheel.



4292121518



4292253572



4285117597



4283806407

Sweetspot

The Sweet Spot groups the original color and five complimentary colors.



4292121518



4294961394



4290352084



4286607735



4278190080



4286611584

Same Dimension

The Same Dimension uses a secret algorithm to generate beautiful new colors.



4292121518



4294943176



4292122771



4285227109



4289396807



4281008146

Inverse Universe

The Inverse Universe completely reimagines the original color for something new.



4292121518



4294943176



4287877076



4285227109



4289396807



4281008146

Previews

White Background



This preview shows how the Android color 4292121518 looks on a white background.

Color Contrast Check

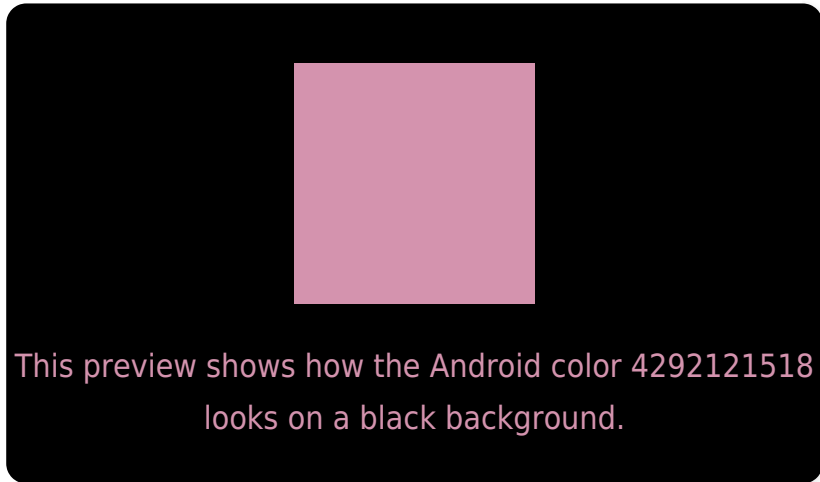
Large Text (above 18pt) WCAG AA × Fail

Any Text WCAG AA × Fail

Large Text (above 18pt) WCAG AAA × Fail

Any Text WCAG AAA × Fail

Black Background



Color Contrast Check

Large Text (above 18pt) WCAG AA ✓ Pass

Any Text WCAG AA ✓ Pass

Large Text (above 18pt) WCAG AAA ✓ Pass

Any Text WCAG AAA ✓ Pass

If you want to check with other color combinations, try the [Color Contrast Checker](#).

Android 4292121518 Background



This preview shows how black text looks on a background with the Android color 4292121518.




This preview shows how white text looks on a background with the Android color 4292121518.

Color Blindness Simulation

Color vision deficiency is a very complex topic, and I could not describe the different causes any better than Wikipedia does, so if you want to learn more, you should check out their [article about color blindness](#).

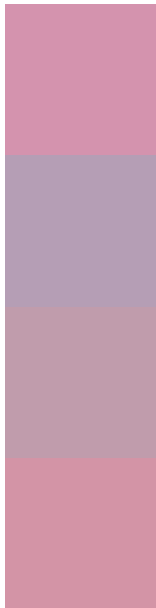
Dichromacy





Tritanopia
4291990945

Trichromacy



Original Color
4292121518

Protanomaly
4290092725

Deuteranomaly
4290813100

Tritanomaly
4292056230

Monochromacy



Original Color
4292121518

Achromatopsia
4289374890

Achromatomaly
4290355883

CSS Examples

Text

The CSS property to change the color of the text to Android 4292121518 is called "color". The color property can be set on classes, ids or directly on the HTML element.

This example shows how text in the color `rgb(212, 147, 174)` looks like.

```
.text, #text, p{  
    color:rgb(212, 147, 174)  
}
```

If you want to add a text shadow in that color use the text-shadow property, you can generate a text shadow directly with our [CSS Text Shadow Generator](#).

Here you see how black text with a 4 pixel rgb(212, 147, 174) colored shadow looks like.

```
.shadow{ text-shadow: 4px 4px 2px rgb(212, 147, 174) }
```

Border

The CSS property to change the border of an element to Android 4292121518 is called "border". The border property can be set on classes, ids or directly on the HTML element.

This example shows the color as border, it can be applied via the CSS property "border" or "border-color".

```
.border, #border, table{ border:4px solid rgb(212, 147, 174) }
```

If only the border color should be changed use the property `border-color`.

```
.border{ border-color:rgb(212, 147, 174) }
```

If you want to add a box shadow in that color use:

Here you see how a box with a 4 pixel `rgb(212, 147, 174)` colored shadow looks like.

```
.boxshadow{ -moz-box-shadow:4px 4px 4px  
4px rgb(212, 147, 174); -webkit-box-  
shadow:4px 4px 4px 4px rgb(212, 147, 174);  
box-shadow:4px 4px 4px 4px rgb(212, 147,  
174) }
```

Background

The CSS property to change the background color of an element to Android 4292121518 is called "background". The background property can be set on classes, ids or directly on the HTML element.

```
.background, #background, body{  
background: rgb(212, 147, 174) }
```

If only the background color should be changed can be used:

```
.background{ background-color: rgb(212,  
147, 174) }
```

This example shows the color as background, it is applied via the CSS property "background".

To optimize and compress your CSS code, you can use our [online CSS compressor and optimizer](#) based on csstidy. If you want to create a linear or radial gradient as background or border, check our [CSS Gradient Generator](#).

Hey! You found this booklet interesting? Support Converting Colors with the new Membership Option!

The pro membership hides all ads, plus gives you double the colors in the color bucket, and more awesome pro features!

[Learn more, Memberships starting at \\$2.50/m!](#)

**Follow me
on Twitter!**

@ConvertingColor