

# Converting Colors

Android(4292122016)

Have a look what the booklet for  
Android(4292122016) contains.

<b>Android(4292122016)</b> .....	3
<b><i>Conversions</i></b> .....	4
<b><i>Details</i></b> .....	6
<b><i>Harmonies</i></b> .....	11
<b><i>Previews</i></b> .....	23
<b><i>Color Blindness Simulation</i></b> .....	26
<b><i>CSS Examples</i></b> .....	29

# **Color**

**Android(4292122016)**

# Conversions

## Conversions Part 1

Format	Color
Hex	D495A0
RGB	212, 149, 160
RGB Percent	83%, 58%, 63%
CMY	0.1686, 0.4157, 0.3725
CMYK	0.00, 0.30, 0.25, 0.17
HSL	350°, 42%, 71%
HSV	350°, 30%, 83%
XYZ	44.2440, 38.0300, 38.2663
YIQ	169.0910, 34.0170, 16.7770

# Conversions

## Conversions Part 2

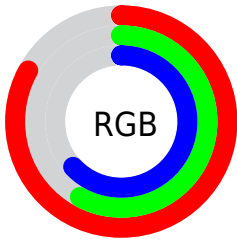
<b>Format</b>	<b>Color</b>
<b>R<sub>YB</sub></b>	212, 149, 160
Decimal	13931936
CIE <sub>Lab</sub>	68.04, 25.25, 3.76
CIE <sub>LCh</sub>	68, 25.529, 8.473
Yxy	38.0300, 0.3670, 0.3155
Android (android.graphics.Color)	4292122016 (0xFFD495A0)
YUV	169.0910, -4.4819, 37.6312
Hunter-Lab	61.6685, 20.1448, 6.3775

# Details

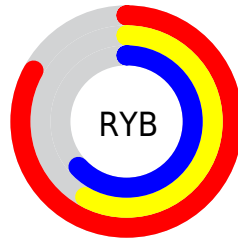
The Android color `4292122016` is a light color, and the websafe version is hex `CC9999`. A complement of this color would be `4288009417`, and the grayscale version is `4289309097`.

A 20% lighter version of the original color is `4294954199`, and `4288438893` is the 20% darker color. If you saturate the color by 10%, you get `4292116623`, and if you desaturate by 10%, it is `4292127409`.

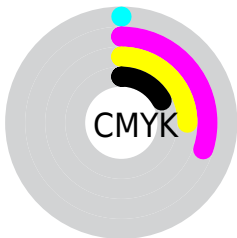
# Distribution



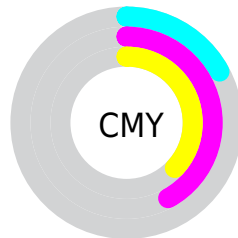
- Red (83%)
- Green (58%)
- Blue (63%)



- Red (83%)
- Yellow (58%)
- Blue (63%)



- Cyan (0%)
- Magenta (30%)
- Yellow (25%)
- Black (17%)



- Cyan (17%)
- Magenta (42%)
- Yellow (37%)

# Brightness & Saturation Gradients

These gradients show how the Android color 4292122016 changes by changing the brightness by 10 percent. The first figure shows a shift by +10% for each color and the second figure -10%.

Similar to the brightness gradients but the following saturation gradients show a change of the Android color 4292122016 by changing the saturation by 10% instead.



 4292122016

 4292122016

4294967295

 4290280326

 4294954199


 4288438893

 4294961395

 4286662996

 4284953149

 4283308840

 4281664531

 4280156161

 4278190080

 4292122016

 4292122016

 4292116623

 4292127409

 4292111229

 4292132803

 4292105580

 4292138452

 4292100186

 4292143846

 4292094793

 4292149239

 4292089399

 4292149247

 4292084006

 4292083749

# Harmonies

## Analogous

The Analogous color harmony consists of three colors that are next to each other on the color wheel.



4291401655



4292122016



4291991690

# Triad

The Triadic color harmony groups three colors that are evenly spaced from another and form a triangle on the color wheel.



4292122016



4288064897



4285771216

# Complementary

The Complementary color scheme is a pair of colors which are on the opposite of each other on the color wheel.



4292122016



4288009417

# Split Complementary

Split-complementary colors differ from the complementary color scheme. The scheme consists of three colors, the original color and two neighbors of the complement color.



4284658114



4292122016



4286362004

# Square

The Square scheme is like the rectangle color scheme, but the four colors are evenly spaced on the color wheel.



4292122016



4289767032



4284986284



4287801043

# Rectangle

The Rectangle color scheme consists of four colors that form a rectangle on the color wheel.



4292122016



4291533951



4284986284



4285247436

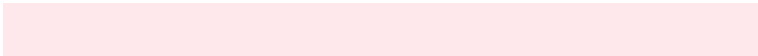


# Sweetspot

The Sweet Spot groups the original color and five complimentary colors.



4292122016



4294961388



4291335636



4286607732



4278190080



4286611584



# Same Dimension

The Same Dimension uses a secret algorithm to generate beautiful new colors.



4292122016



4294943667



4292127125



4285227106



4289396766



4281008136



# Inverse Universe

The Inverse Universe completely reimagines the original color for something new.



4292122016



4294943667



4288004308



4285227106



4289396766

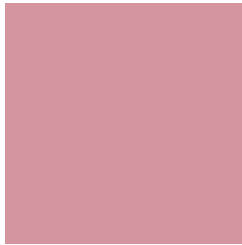


4281008136



# Previews

## White Background



This preview shows how the Android color 4292122016 looks on a white background.

## Color Contrast Check

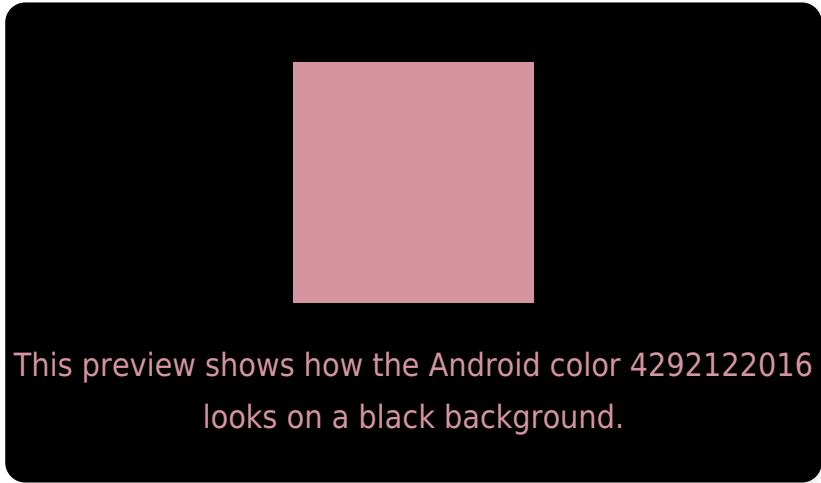
Large Text (above 18pt) WCAG AA × Fail

Any Text WCAG AA × Fail

Large Text (above 18pt) WCAG AAA × Fail

Any Text WCAG AAA × Fail

# Black Background



## Color Contrast Check

Large Text (above 18pt) WCAG AA ✓ Pass

Any Text WCAG AA ✓ Pass

Large Text (above 18pt) WCAG AAA ✓ Pass

Any Text WCAG AAA ✓ Pass

If you want to check with other color combinations, try the [Color Contrast Checker](#).



# Android 4292122016 Background



This preview shows how black text looks on a background with the Android color 4292122016.



This preview shows how white text looks on a background with the Android color 4292122016.

# Color Blindness Simulation

Color vision deficiency is a very complex topic, and I could not describe the different causes any better than Wikipedia does, so if you want to learn more, you should check out their [article about color blindness](#).

## Dichromacy



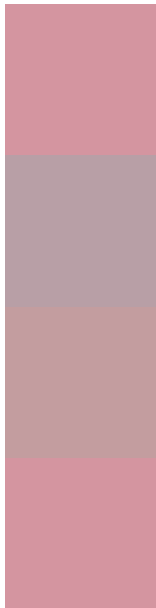
**Original Color**  
4292122016

**Protanopia**  
4289242537

**Deuteranopia**  
4290355614



# Trichromacy



**Original Color**  
4292122016

**Protanomaly**  
4290289574

**Deuteranomaly**  
4291009951

**Tritanomaly**  
4292122016

# Monochromacy



**Original Color**  
4292122016

**Achromatopsia**  
4289309097

**Achromatomaly**  
4290355878

# CSS Examples

## Text

The CSS property to change the color of the text to Android 4292122016 is called "color". The color property can be set on classes, ids or directly on the HTML element.

This example shows how text in the color `rgb(212, 149, 160)` looks like.

```
.text, #text, p{  
    color:rgb(212, 149, 160)  
}
```

If you want to add a text shadow in that color use the text-shadow property, you can generate a text shadow directly with our [CSS Text Shadow Generator](#).

Here you see how black text with a 4 pixel rgb(212, 149, 160) colored shadow looks like.

```
.shadow{ text-shadow: 4px 4px 2px rgb(212, 149, 160) }
```

## Border

The CSS property to change the border of an element to Android 4292122016 is called "border". The border property can be set on classes, ids or directly on the HTML element.

This example shows the color as border, it can be applied via the CSS property "border" or "border-color".

```
.border, #border, table{ border:4px solid rgb(212, 149, 160) }
```

If only the border color should be changed use the property `border-color`.

```
.border{ border-color:rgb(212, 149, 160) }
```

If you want to add a box shadow in that color use:

Here you see how a box with a 4 pixel `rgb(212, 149, 160)` colored shadow looks like.

```
.boxshadow{ -moz-box-shadow:4px 4px 4px  
4px rgb(212, 149, 160); -webkit-box-  
shadow:4px 4px 4px 4px rgb(212, 149, 160);  
box-shadow:4px 4px 4px 4px rgb(212, 149,  
160) }
```

# Background

The CSS property to change the background color of an element to Android 4292122016 is called "background". The background property can be set on classes, ids or directly on the HTML element.

```
.background, #background, body{  
background: rgb(212, 149, 160) }
```

If only the background color should be changed can be used:

```
.background{ background-color: rgb(212,  
149, 160) }
```

This example shows the color as background, it is applied via the CSS property "background".

To optimize and compress your CSS code, you can use our [online CSS compressor and optimizer](#) based on csstidy. If you want to create a linear or radial gradient as background or border, check our [CSS Gradient Generator](#).



Hey! You found this booklet interesting? Support Converting Colors with the new Membership Option!

The pro membership hides all ads, plus gives you double the colors in the color bucket, and more awesome pro features!

**[Learn more, Memberships starting at \\$2.50/m!](#)**

**Follow me  
on Twitter!**

@ConvertingColor