

Converting Colors

Android(4292125106)

Have a look what the booklet for
Android(4292125106) contains.

Android(4292125106)	3
<i>Conversions</i>	4
<i>Details</i>	6
<i>Harmonies</i>	11
<i>Previews</i>	23
<i>Color Blindness Simulation</i>	26
<i>CSS Examples</i>	29

Color

Android(4292125106)

Conversions

Conversions Part 1

Format	Color
Hex	D4A1B2
RGB	212, 161, 178
RGB Percent	83%, 63%, 70%
CMY	0.1686, 0.3686, 0.3020
CMYK	0.00, 0.24, 0.16, 0.17
HSL	340°, 37%, 73%
HSV	340°, 24%, 83%
XYZ	47.9321, 42.7011, 47.8353
YIQ	178.1870, 24.9390, 16.0990

Conversions

Conversions Part 2

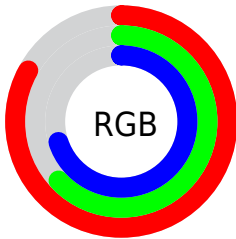
Format	Color
R _{YB}	212, 161, 178
Decimal	13935026
CIE Lab	71.35, 21.47, -1.43
CIE LCh	71, 21.517, 356.178
Yxy	42.7011, 0.3462, 0.3084
Android (android.graphics.Color)	4292125106 (0xFFD4A1B2)
YUV	178.1870, -0.0922, 29.6540
Hunter-Lab	65.3461, 16.5761, 2.3402

Details

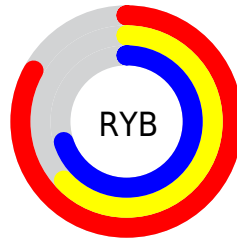
The Android color `4292125106` is a light color, and the websafe version is hex `CC9999`. A complement of this color would be `4288795843`, and the grayscale version is `4289901234`.

A 20% lighter version of the original color is `4294957290`, and `4288507261` is the 20% darker color. If you saturate the color by 10%, you get `4292119716`, and if you desaturate by 10%, it is `4292130496`.

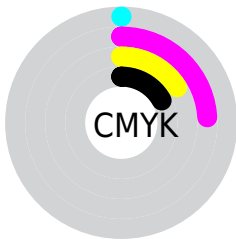
Distribution



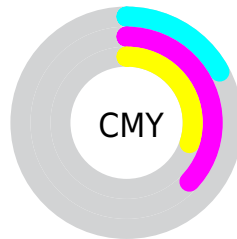
- Red (83%)
- Green (63%)
- Blue (70%)



- Red (83%)
- Yellow (63%)
- Blue (70%)



- Cyan (0%)
- Magenta (24%)
- Yellow (16%)
- Black (17%)



- Cyan (17%)
- Magenta (37%)
- Yellow (30%)

Brightness & Saturation Gradients

These gradients show how the Android color 4292125106 changes by changing the brightness by 10 percent. The first figure shows a shift by +10% for each color and the second figure -10%.

Similar to the brightness gradients but the following saturation gradients show a change of the Android color 4292125106 by changing the saturation by 10% instead.

 4292125106

 4292125106

4294967295

 4290283415

 4294957290

 4288507261

 4294964735

 4286731365

 4285021517

 4283377206

 4281798689

 4280549385

 4278190080

 4292125106

 4292125106

 4292119716

 4292130496

 4292114326

 4292135886

 4292108680

 4292141532

 4292103289

 4292146923

 4292097899

 4292149241

 4292092509

 4292149247

 4292087119

 4292083783

Harmonies

Analogous

The Analogous color harmony consists of three colors that are next to each other on the color wheel.



4291208389



4292125106



4292321950

Triad

The Triadic color harmony groups three colors that are evenly spaced from another and form a triangle on the color wheel.



4292125106



4289442699



4286560207

Complementary

The Complementary color scheme is a pair of colors which are on the opposite of each other on the color wheel.



4292125106



4288795843

Split Complementary

Split-complementary colors differ from the complementary color scheme. The scheme consists of three colors, the original color and two neighbors of the complement color.



4286102207



4292125106



4288001944

Square

The Square scheme is like the rectangle color scheme, but the four colors are evenly spaced on the color wheel.



4292125106



4290817416



4286692011



4287934933

Rectangle

The Rectangle color scheme consists of four colors that form a rectangle on the color wheel.



4292125106



4292060307



4286692011



4286298314

Sweetspot

The Sweet Spot groups the original color and five complimentary colors.



4292125106



4294962675



4291011028



4286608761



4278190080



4286611584

Same Dimension

The Same Dimension uses a secret algorithm to generate beautiful new colors.



4292125106



4294948302



4292127393



4285227108



4289396793



4281008142

Inverse Universe

The Inverse Universe completely reimagines the original color for something new.



4292125106



4294948302



4288793556



4285227108



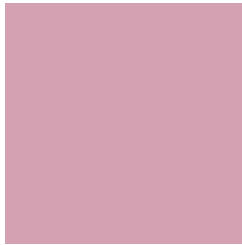
4289396793



4281008142

Previews

White Background



This preview shows how the Android color 4292125106 looks on a white background.

Color Contrast Check

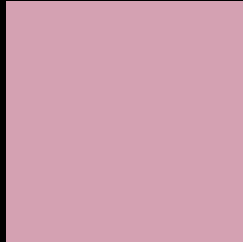
Large Text (above 18pt) WCAG AA × Fail

Any Text WCAG AA × Fail

Large Text (above 18pt) WCAG AAA × Fail

Any Text WCAG AAA × Fail

Black Background



This preview shows how the Android color 4292125106 looks on a black background.

Color Contrast Check

Large Text (above 18pt) WCAG AA ✓ Pass

Any Text WCAG AA ✓ Pass

Large Text (above 18pt) WCAG AAA ✓ Pass

Any Text WCAG AAA ✓ Pass

If you want to check with other color combinations, try the [Color Contrast Checker](#).

Android 4292125106 Background



This preview shows how black text looks on a background with the Android color 4292125106.



This preview shows how white text looks on a background with the Android color 4292125106.

Color Blindness Simulation

Color vision deficiency is a very complex topic, and I could not describe the different causes any better than Wikipedia does, so if you want to learn more, you should check out their [article about color blindness](#).


Dichromacy



Original Color
4292125106

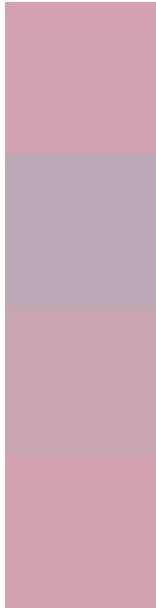
Protanopia
4289703610

Deuteranopia
4290750896



Tritanopia
4292125358

Trichromacy



Original Color
4292125106

Protanomaly
4290554295

Deuteranomaly
4291274417

Tritanomaly
4292125359

Monochromacy



Original Color
4292125106

Achromatopsia
4289901234

Achromatomaly
4290686130

CSS Examples

Text

The CSS property to change the color of the text to Android 4292125106 is called "color". The color property can be set on classes, ids or directly on the HTML element.

This example shows how text in the color `rgb(212, 161, 178)` looks like.

```
.text, #text, p{  
    color:rgb(212, 161, 178)  
}
```

If you want to add a text shadow in that color use the text-shadow property, you can generate a text shadow directly with our [CSS Text Shadow Generator](#).

Here you see how black text with a 4 pixel rgb(212, 161, 178) colored shadow looks like.

```
.shadow{ text-shadow: 4px 4px 2px rgb(212, 161, 178) }
```

Border

The CSS property to change the border of an element to Android 4292125106 is called "border". The border property can be set on classes, ids or directly on the HTML element.

This example shows the color as border, it can be applied via the CSS property "border" or "border-color".

```
.border, #border, table{ border:4px solid rgb(212, 161, 178) }
```

If only the border color should be changed use the property `border-color`.

```
.border{ border-color:rgb(212, 161, 178) }
```

If you want to add a box shadow in that color use:

Here you see how a box with a 4 pixel `rgb(212, 161, 178)` colored shadow looks like.

```
.boxshadow{ -moz-box-shadow:4px 4px 4px  
4px rgb(212, 161, 178); -webkit-box-  
shadow:4px 4px 4px 4px rgb(212, 161, 178);  
box-shadow:4px 4px 4px 4px rgb(212, 161,  
178) }
```

Background

The CSS property to change the background color of an element to Android 4292125106 is called "background". The background property can be set on classes, ids or directly on the HTML element.

```
.background, #background, body{  
background: rgb(212, 161, 178) }
```

If only the background color should be changed can be used:

```
.background{ background-color: rgb(212,  
161, 178) }
```

This example shows the color as background, it is applied via the CSS property "background".

To optimize and compress your CSS code, you can use our [online CSS compressor and optimizer](#) based on csstidy. If you want to create a linear or radial gradient as background or border, check our [CSS Gradient Generator](#).

Hey! You found this booklet interesting? Support Converting Colors with the new Membership Option!

The pro membership hides all ads, plus gives you double the colors in the color bucket, and more awesome pro features!

[Learn more, Memberships starting at \\$2.50/m!](#)

**Follow me
on Twitter!**

@ConvertingColor