

Converting Colors

Android(4292127367)

Have a look what the booklet for
Android(4292127367) contains.

| | |
|--|----|
| Android(4292127367) | 3 |
| <i>Conversions</i> | 4 |
| <i>Details</i> | 6 |
| <i>Harmonies</i> | 11 |
| <i>Previews</i> | 23 |
| <i>Color Blindness Simulation</i> | 26 |
| <i>CSS Examples</i> | 29 |

Color

Android(4292127367)

Conversions

Conversions Part 1

| Format | Color |
|-------------|----------------------------|
| Hex | D4AA87 |
| RGB | 212, 170, 135 |
| RGB Percent | 83%, 67%, 53% |
| CMY | 0.1686, 0.3333, 0.4706 |
| CMYK | 0.00, 0.20, 0.36, 0.17 |
| HSL | 27°, 47%, 68% |
| HSV | 27°, 36%, 83% |
| XYZ | 45.8993, 44.4958, 29.0911 |
| YIQ | 178.5680, 36.2670, -1.9810 |

Conversions

Conversions Part 2

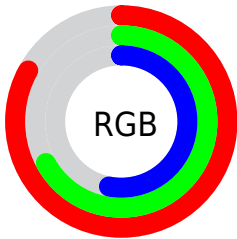
| Format | Color |
|-------------------------------------|--------------------------------|
| R_{YB} | 212, 199, 135 |
| Decimal | 13937287 |
| CIE _{Lab} | 72.56, 10.56, 23.87 |
| CIE _{LCh} | 73, 26.104, 66.142 |
| Yxy | 44.4958, 0.3841, 0.3724 |
| Android (android.graphics.Color) | 4292127367 (0xFFD4AA87) |
| YUV | 178.5680, -21.4790, 29.3199 |
| Hunter-Lab | 66.7051, 6.0904, 20.8364 |

Details

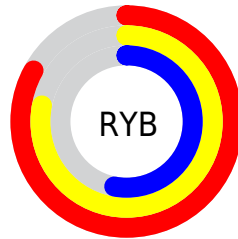
The Android color **4292127367** is a light color, and the websafe version is hex **CC9966**. A complement of this color would be **4287082964**, and the grayscale version is **4289967027**.

A 20% lighter version of the original color is **4294959548**, and **4288443989** is the 20% darker color. If you saturate the color by 10%, you get **4292124274**, and if you desaturate by 10%, it is **4292130460**.

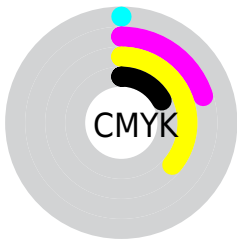
Distribution



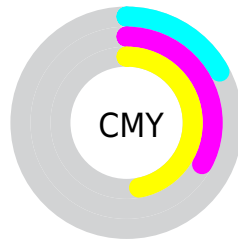
- Red (83%)
- Green (67%)
- Blue (53%)



- Red (83%)
- Yellow (78%)
- Blue (53%)



- Cyan (0%)
- Magenta (20%)
- Yellow (36%)
- Black (17%)



- Cyan (17%)
- Magenta (33%)
- Yellow (47%)

Brightness & Saturation Gradients

These gradients show how the Android color 4292127367 changes by changing the brightness by 10 percent. The first figure shows a shift by +10% for each color and the second figure -10%.

Similar to the brightness gradients but the following saturation gradients show a change of the Android color 4292127367 by changing the saturation by 10% instead.

 4292127367

 4292127367

4294967295

 4290285678

 4294959548

 4288443989

 4294967000

 4286668093

 4294967285

 4284958247

 4283248402

 4281670144

 4280156416

 4278190080

 4292127367

 4292127367

 4292124274

 4292130460

 4292121437

 4292133297

 4292118343

 4292136391

 4292115506

 4292139228

 4292112413

 4292142321

 4292109576

 4292145151

 4292108288

 4292148223

 4292149247

Harmonies

Analogous

The Analogous color harmony consists of three colors that are next to each other on the color wheel.



4292977559



4292127367



4290753155

Triad

The Triadic color harmony groups three colors that are evenly spaced from another and form a triangle on the color wheel.



4292127367



4285776054



4290554585

Complementary

The Complementary color scheme is a pair of colors which are on the opposite of each other on the color wheel.



4292127367



4287082964

Split Complementary

Split-complementary colors differ from the complementary color scheme. The scheme consists of three colors, the original color and two neighbors of the complement color.



4288394209



4292127367



4285316813

Square

The Square scheme is like the rectangle color scheme, but the four colors are evenly spaced on the color wheel.



4292127367



4287217310



4286364381



4292191174

Rectangle

The Rectangle color scheme consists of four colors that form a rectangle on the color wheel.



4292127367



4289574791



4286364381



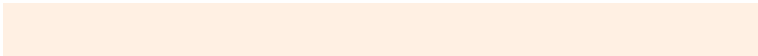
4289899997

Sweetspot

The Sweet Spot groups the original color and five complimentary colors.



4292127367



4294963427



4292118449



4286609007



4278190080



4286611584

Same Dimension

The Same Dimension uses a secret algorithm to generate beautiful new colors.



4292127367



4294951567



4292137095



4285228384



4289416704



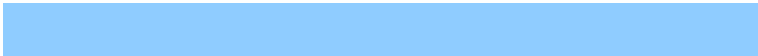
4281013248

Inverse Universe

The Inverse Universe completely reimagines the original color for something new.



4287082964



4287614207



4287073236



4284507755



4278214059



4278196267

Previews

White Background



This preview shows how the Android color 4292127367 looks on a white background.

Color Contrast Check

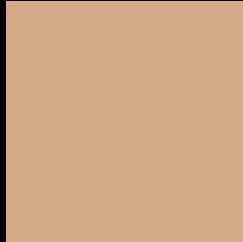
Large Text (above 18pt) WCAG AA × Fail

Any Text WCAG AA × Fail

Large Text (above 18pt) WCAG AAA × Fail

Any Text WCAG AAA × Fail

Black Background



This preview shows how the Android color 4292127367 looks on a black background.

Color Contrast Check

Large Text (above 18pt) WCAG AA ✓ Pass

Any Text WCAG AA ✓ Pass

Large Text (above 18pt) WCAG AAA ✓ Pass

Any Text WCAG AAA ✓ Pass

If you want to check with other color combinations, try the [Color Contrast Checker](#).

Android 4292127367 Background



This preview shows how black text looks on a background with the Android color 4292127367.




This preview shows how white text looks on a background with the Android color 4292127367.

Color Blindness Simulation

Color vision deficiency is a very complex topic, and I could not describe the different causes any better than Wikipedia does, so if you want to learn more, you should check out their [article about color blindness](#).

Dichromacy





Tritanopia
4292388017

Trichromacy



Original Color
4292127367

Protanomaly
4291211146

Deuteranomaly
4292062087

Tritanomaly
4292322978

Monochromacy



Original Color
4292127367

Achromatopsia
4289967027

Achromatomaly
4290752675

CSS Examples

Text

The CSS property to change the color of the text to Android 4292127367 is called "color". The color property can be set on classes, ids or directly on the HTML element.

This example shows how text in the color `rgb(212, 170, 135)` looks like.

```
.text, #text, p{  
    color:rgb(212, 170, 135)  
}
```

If you want to add a text shadow in that color use the text-shadow property, you can generate a text shadow directly with our [CSS Text Shadow Generator](#).

Here you see how black text with a 4 pixel rgb(212, 170, 135) colored shadow looks like.

```
.shadow{ text-shadow: 4px 4px 2px rgb(212, 170, 135) }
```

Border

The CSS property to change the border of an element to Android 4292127367 is called "border". The border property can be set on classes, ids or directly on the HTML element.

This example shows the color as border, it can be applied via the CSS property "border" or "border-color".

```
.border, #border, table{ border:4px solid rgb(212, 170, 135) }
```

If only the border color should be changed use the property `border-color`.

```
.border{ border-color:rgb(212, 170, 135) }
```

If you want to add a box shadow in that color use:

Here you see how a box with a 4 pixel `rgb(212, 170, 135)` colored shadow looks like.

```
.boxshadow{ -moz-box-shadow:4px 4px 4px  
4px rgb(212, 170, 135); -webkit-box-  
shadow:4px 4px 4px 4px rgb(212, 170, 135);  
box-shadow:4px 4px 4px 4px rgb(212, 170,  
135) }
```

Background

The CSS property to change the background color of an element to Android 4292127367 is called "background". The background property can be set on classes, ids or directly on the HTML element.

```
.background, #background, body{  
background: rgb(212, 170, 135) }
```

If only the background color should be changed can be used:

```
.background{ background-color: rgb(212,  
170, 135) }
```

This example shows the color as background, it is applied via the CSS property "background".

To optimize and compress your CSS code, you can use our [online CSS compressor and optimizer](#) based on csstidy. If you want to create a linear or radial gradient as background or border, check our [CSS Gradient Generator](#).

Hey! You found this booklet interesting? Support Converting Colors with the new Membership Option!

The pro membership hides all ads, plus gives you double the colors in the color bucket, and more awesome pro features!

[Learn more, Memberships starting at \\$2.50/m!](#)

**Follow me
on Twitter!**

@ConvertingColor