

Converting Colors

Android(4292129465)

Have a look what the booklet for
Android(4292129465) contains.

| | |
|--|----|
| Android(4292129465) | 3 |
| <i>Conversions</i> | 4 |
| <i>Details</i> | 6 |
| <i>Harmonies</i> | 11 |
| <i>Previews</i> | 23 |
| <i>Color Blindness Simulation</i> | 26 |
| <i>CSS Examples</i> | 29 |

Color

Android(4292129465)

Conversions

Conversions Part 1

| Format | Color |
|-------------|---------------------------|
| Hex | D4B2B9 |
| RGB | 212, 178, 185 |
| RGB Percent | 83%, 70%, 73% |
| CMY | 0.1686, 0.3020, 0.2745 |
| CMYK | 0.00, 0.16, 0.13, 0.17 |
| HSL | 348°, 28%, 76% |
| HSV | 348°, 16%, 83% |
| XYZ | 51.8287, 49.3406, 52.6910 |
| YIQ | 188.9640, 18.0170, 9.3850 |

Conversions

Conversions Part 2

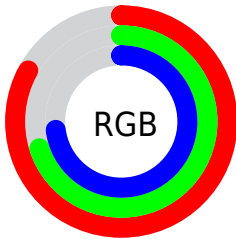
| Format | Color |
|-------------------------------------|-------------------------------|
| R _Y B | 212, 178, 185 |
| Decimal | 13939385 |
| CIE Lab | 75.66, 13.39, 1.02 |
| CIE LCh | 76, 13.430, 4.352 |
| Yxy | 49.3406, 0.3369, 0.3207 |
| Android (android.graphics.Color) | 4292129465 (0xFFD4B2B9) |
| YUV | 188.9640, -1.9543, 20.2026 |
| Hunter-Lab | 70.2429, 8.7812, 4.6951 |

Details

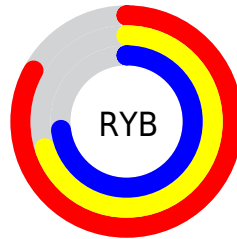
The Android color `4292129465` is a light color, and the websafe version is hex `CC9999`. A complement of this color would be `4289909965`, and the grayscale version is `4290624957`.

A 20% lighter version of the original color is `4294961905`, and `4288511364` is the 20% darker color. If you saturate the color by 10%, you get `4292124072`, and if you desaturate by 10%, it is `4292134858`.

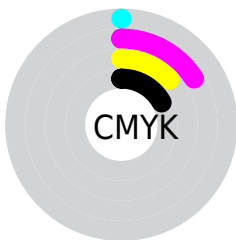
Distribution



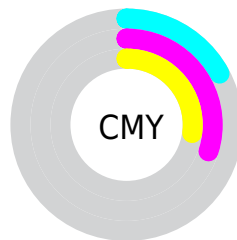
- Red (83%)
- Green (70%)
- Blue (73%)



- Red (83%)
- Yellow (70%)
- Blue (73%)



- Cyan (0%)
- Magenta (16%)
- Yellow (13%)
- Black (17%)



- Cyan (17%)
- Magenta (30%)
- Yellow (27%)

Brightness & Saturation Gradients

These gradients show how the Android color 4292129465 changes by changing the brightness by 10 percent. The first figure shows a shift by +10% for each color and the second figure -10%.

Similar to the brightness gradients but the following saturation gradients show a change of the Android color 4292129465 by changing the saturation by 10% instead.

 4292129465

 4292129465

4294967295

 4290287518

 4294961905

 4288511364

 4286801003

 4285090899

 4283512124

 4281933862

 4280551953

 4278190080

 4292129465

 4292129465

 4292124072

 4292134858

 4292118679

 4292140251

 4292113030

 4292145900

 4292107638

 4292149244

 4292102245

 4292149247

 4292096852

 4292091459

 4292085810

 4292083756

Harmonies

Analogous

The Analogous color harmony consists of three colors that are next to each other on the color wheel.



4291605445



4292129465



4292129709

Triad

The Triadic color harmony groups three colors that are evenly spaced from another and form a triangle on the color wheel.



4292129465



4290100902



4288856016

Complementary

The Complementary color scheme is a pair of colors which are on the opposite of each other on the color wheel.



4292129465



4289909965

Split Complementary

Split-complementary colors differ from the complementary color scheme. The scheme consists of three colors, the original color and two neighbors of the complement color.



4288397768



4292129465



4289184175

Square

The Square scheme is like the rectangle color scheme, but the four colors are evenly spaced on the color wheel.



4292129465



4291017378



4288529084



4289706963

Rectangle

The Rectangle color scheme consists of four colors that form a rectangle on the color wheel.



4292129465



4291933607



4288529084



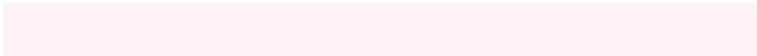
4288659662

Sweetspot

The Sweet Spot groups the original color and five complimentary colors.



4292129465



4294963957



4291670740



4286609529



4278190080



4286611584

Same Dimension

The Same Dimension uses a secret algorithm to generate beautiful new colors.



4292129465



4294954969



4292132018



4285227107



4289396771



4281008137

Inverse Universe

The Inverse Universe completely reimagines the original color for something new.



4292129465



4294954969



4289907412



4285227107



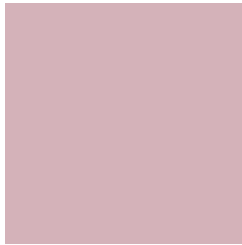
4289396771



4281008137

Previews

White Background



This preview shows how the Android color 4292129465 looks on a white background.

Color Contrast Check

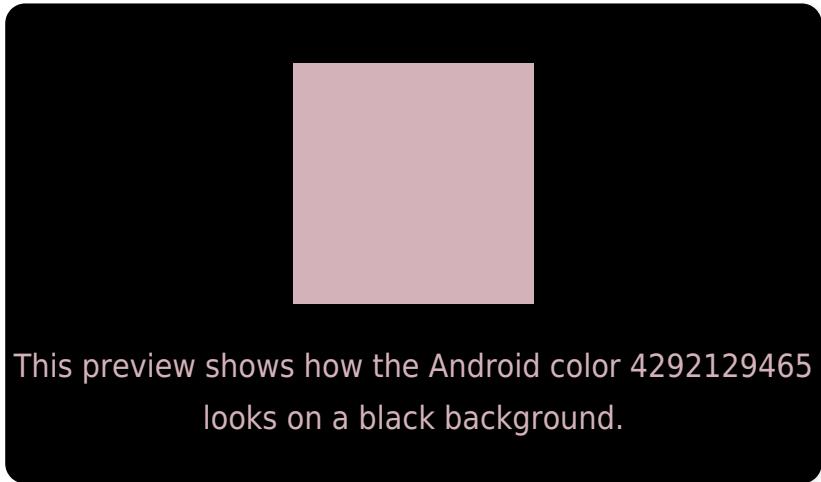
Large Text (above 18pt) WCAG AA × Fail

Any Text WCAG AA × Fail

Large Text (above 18pt) WCAG AAA × Fail

Any Text WCAG AAA × Fail

Black Background



Color Contrast Check

Large Text (above 18pt) WCAG AA ✓ Pass

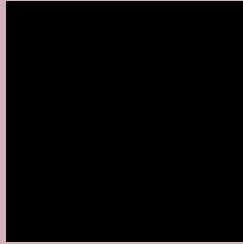
Any Text WCAG AA ✓ Pass

Large Text (above 18pt) WCAG AAA ✓ Pass

Any Text WCAG AAA ✓ Pass

If you want to check with other color combinations, try the [Color Contrast Checker](#).

Android 4292129465 Background



This preview shows how black text looks on a background with the Android color 4292129465.



This preview shows how white text looks on a background with the Android color 4292129465.

Color Blindness Simulation

Color vision deficiency is a very complex topic, and I could not describe the different causes any better than Wikipedia does, so if you want to learn more, you should check out their [article about color blindness](#).

Dichromacy





Tritanopia
4292194751

Trichromacy



Original Color
4292129465

Protanomaly
4291147708

Deuteranomaly
4291867833

Tritanomaly
4292194749

Monochromacy



Original Color
4292129465

Achromatopsia
4290624957

Achromatomaly
4291148220

CSS Examples

Text

The CSS property to change the color of the text to Android 4292129465 is called "color". The color property can be set on classes, ids or directly on the HTML element.

This example shows how text in the color `rgb(212, 178, 185)` looks like.

```
.text, #text, p{  
    color:rgb(212, 178, 185)  
}
```

If you want to add a text shadow in that color use the text-shadow property, you can generate a text shadow directly with our [CSS Text Shadow Generator](#).

Here you see how black text with a 4 pixel rgb(212, 178, 185) colored shadow looks like.

```
.shadow{ text-shadow: 4px 4px 2px rgb(212, 178, 185) }
```

Border

The CSS property to change the border of an element to Android 4292129465 is called "border". The border property can be set on classes, ids or directly on the HTML element.

This example shows the color as border, it can be applied via the CSS property "border" or "border-color".

```
.border, #border, table{ border:4px solid rgb(212, 178, 185) }
```

If only the border color should be changed use the property `border-color`.

```
.border{ border-color:rgb(212, 178, 185) }
```

If you want to add a box shadow in that color use:

Here you see how a box with a 4 pixel `rgb(212, 178, 185)` colored shadow looks like.

```
.boxshadow{ -moz-box-shadow:4px 4px 4px  
4px rgb(212, 178, 185); -webkit-box-  
shadow:4px 4px 4px 4px rgb(212, 178, 185);  
box-shadow:4px 4px 4px 4px rgb(212, 178,  
185) }
```

Background

The CSS property to change the background color of an element to Android 4292129465 is called "background". The background property can be set on classes, ids or directly on the HTML element.

```
.background, #background, body{  
background: rgb(212, 178, 185) }
```

If only the background color should be changed can be used:

```
.background{ background-color: rgb(212,  
178, 185) }
```

This example shows the color as background, it is applied via the CSS property "background".

To optimize and compress your CSS code, you can use our [online CSS compressor and optimizer](#) based on csstidy. If you want to create a linear or radial gradient as background or border, check our [CSS Gradient Generator](#).

Hey! You found this booklet interesting? Support Converting Colors with the new Membership Option!

The pro membership hides all ads, plus gives you double the colors in the color bucket, and more awesome pro features!

[Learn more, Memberships starting at \\$2.50/m!](#)

**Follow me
on Twitter!**

@ConvertingColor