

Converting Colors

Android(4292129721)

Have a look what the booklet for
Android(4292129721) contains.

Android(4292129721)	3
<i>Conversions</i>	4
<i>Details</i>	6
<i>Harmonies</i>	11
<i>Previews</i>	23
<i>Color Blindness Simulation</i>	26
<i>CSS Examples</i>	29

Color

Android(4292129721)

Conversions

Conversions Part 1

Format	Color
Hex	D4B3B9
RGB	212, 179, 185
RGB Percent	83%, 70%, 73%
CMY	0.1686, 0.2980, 0.2745
CMYK	0.00, 0.16, 0.13, 0.17
HSL	349°, 28%, 77%
HSV	349°, 16%, 83%
XYZ	52.0284, 49.7400, 52.7575
YIQ	189.5510, 17.7420, 8.8620

Conversions

Conversions Part 2

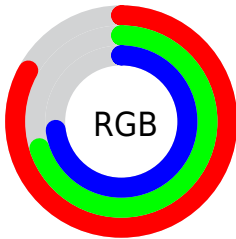
Format	Color
R _Y B	212, 179, 185
Decimal	13939641
CIE Lab	75.91, 12.85, 1.38
CIE LCh	76, 12.926, 6.121
Yxy	49.7400, 0.3367, 0.3219
Android (android.graphics.Color)	4292129721 (0xFFD4B3B9)
YUV	189.5510, -2.2436, 19.6878
Hunter-Lab	70.5266, 8.2603, 5.0167

Details

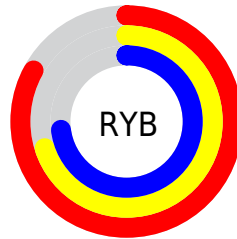
The Android color `4292129721` is a light color, and the websafe version is hex `CC9999`. A complement of this color would be `4289975502`, and the grayscale version is `4290690750`.

A 20% lighter version of the original color is `4294962161`, and `4288511620` is the 20% darker color. If you saturate the color by 10%, you get `4292124328`, and if you desaturate by 10%, it is `4292135114`.

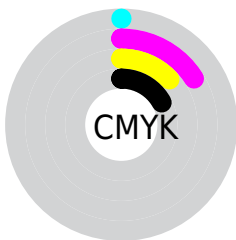
Distribution



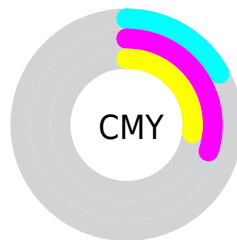
- Red (83%)
- Green (70%)
- Blue (73%)



- Red (83%)
- Yellow (70%)
- Blue (73%)



- Cyan (0%)
- Magenta (16%)
- Yellow (13%)
- Black (17%)



- Cyan (17%)
- Magenta (30%)
- Yellow (27%)

Brightness & Saturation Gradients

These gradients show how the Android color 4292129721 changes by changing the brightness by 10 percent. The first figure shows a shift by +10% for each color and the second figure -10%.

Similar to the brightness gradients but the following saturation gradients show a change of the Android color 4292129721 by changing the saturation by 10% instead.

 4292129721

 4292129721

4294967295

 4290287774

 4294962161

 4288511620

 4286801259

 4285091155

 4283512380

 4281934118

 4280552209

 4278190080

 4292129721

 4292129721

 4292124328

 4292135114

 4292118934

 4292140508

 4292113285

 4292146157

 4292107892

 4292149246

 4292102498

 4292149247

 4292097105

 4292091712

 4292086062

 4292083751

Harmonies

Analogous

The Analogous color harmony consists of three colors that are next to each other on the color wheel.



4291671237



4292129721



4292129966

Triad

The Triadic color harmony groups three colors that are evenly spaced from another and form a triangle on the color wheel.



4292129721



4290101160



4288987089

Complementary

The Complementary color scheme is a pair of colors which are on the opposite of each other on the color wheel.



4292129721



4289975502

Split Complementary

Split-complementary colors differ from the complementary color scheme. The scheme consists of three colors, the original color and two neighbors of the complement color.



4288528841



4292129721



4289249713

Square

The Square scheme is like the rectangle color scheme, but the four colors are evenly spaced on the color wheel.



4292129721



4290952100



4288660157



4289838035

Rectangle

The Rectangle color scheme consists of four colors that form a rectangle on the color wheel.



4292129721



4291868328



4288660157



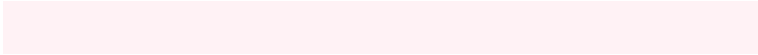
4288790734

Sweetspot

The Sweet Spot groups the original color and five complimentary colors.



4292129721



4294963957



4291736532



4286609529



4278190080



4286611584

Same Dimension

The Same Dimension uses a secret algorithm to generate beautiful new colors.



4292129721



4294954967



4292132275



4285227106



4289396767



4281008136

Inverse Universe

The Inverse Universe completely reimagines the original color for something new.



4292129721



4294954967



4289972948



4285227106



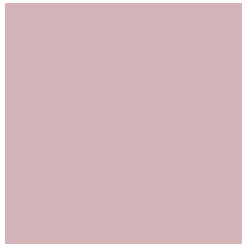
4289396767



4281008136

Previews

White Background



This preview shows how the Android color 4292129721 looks on a white background.

Color Contrast Check

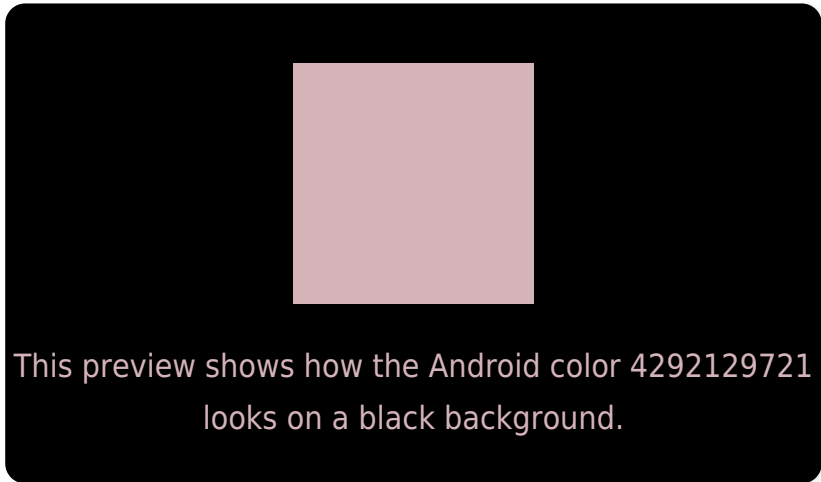
Large Text (above 18pt) WCAG AA × Fail

Any Text WCAG AA × Fail

Large Text (above 18pt) WCAG AAA × Fail

Any Text WCAG AAA × Fail

Black Background



Color Contrast Check

Large Text (above 18pt) WCAG AA ✓ Pass

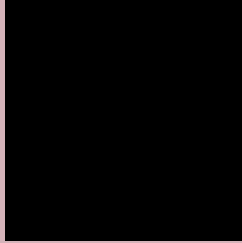
Any Text WCAG AA ✓ Pass

Large Text (above 18pt) WCAG AAA ✓ Pass

Any Text WCAG AAA ✓ Pass

If you want to check with other color combinations, try the [Color Contrast Checker](#).

Android 4292129721 Background



This preview shows how black text looks on a background with the Android color 4292129721.



This preview shows how white text looks on a background with the Android color 4292129721.

Color Blindness Simulation

Color vision deficiency is a very complex topic, and I could not describe the different causes any better than Wikipedia does, so if you want to learn more, you should check out their [article about color blindness](#).


Dichromacy



Original Color
4292129721

Protanopia
4290689725

Deuteranopia
4291737017



Tritanopia
4292195008

Trichromacy



Original Color

4292129721

Protanomaly

4291213244

Deuteranomaly

4291867833

Tritanomaly

4292195005

Monochromacy



Original Color

4292129721

Achromatopsia

4290690750

Achromatomaly

4291214012

CSS Examples

Text

The CSS property to change the color of the text to Android 4292129721 is called "color". The color property can be set on classes, ids or directly on the HTML element.

This example shows how text in the color `rgb(212, 179, 185)` looks like.

```
.text, #text, p{  
    color:rgb(212, 179, 185)  
}
```

If you want to add a text shadow in that color use the text-shadow property, you can generate a text shadow directly with our [CSS Text Shadow Generator](#).

Here you see how black text with a 4 pixel rgb(212, 179, 185) colored shadow looks like.

```
.shadow{ text-shadow: 4px 4px 2px rgb(212, 179, 185) }
```

Border

The CSS property to change the border of an element to Android 4292129721 is called "border". The border property can be set on classes, ids or directly on the HTML element.

This example shows the color as border, it can be applied via the CSS property "border" or "border-color".

```
.border, #border, table{ border:4px solid rgb(212, 179, 185) }
```

If only the border color should be changed use the property `border-color`.

```
.border{ border-color:rgb(212, 179, 185) }
```

If you want to add a box shadow in that color use:

Here you see how a box with a 4 pixel `rgb(212, 179, 185)` colored shadow looks like.

```
.boxshadow{ -moz-box-shadow:4px 4px 4px  
4px rgb(212, 179, 185); -webkit-box-  
shadow:4px 4px 4px 4px rgb(212, 179, 185);  
box-shadow:4px 4px 4px 4px rgb(212, 179,  
185) }
```

Background

The CSS property to change the background color of an element to Android 4292129721 is called "background". The background property can be set on classes, ids or directly on the HTML element.

```
.background, #background, body{  
background: rgb(212, 179, 185) }
```

If only the background color should be changed can be used:

```
.background{ background-color: rgb(212,  
179, 185) }
```

This example shows the color as background, it is applied via the CSS property "background".

To optimize and compress your CSS code, you can use our [online CSS compressor and optimizer](#) based on csstidy. If you want to create a linear or radial gradient as background or border, check our [CSS Gradient Generator](#).

Hey! You found this booklet interesting? Support Converting Colors with the new Membership Option!

The pro membership hides all ads, plus gives you double the colors in the color bucket, and more awesome pro features!

[Learn more, Memberships starting at \\$2.50/m!](#)

**Follow me
on Twitter!**

@ConvertingColor