

Converting Colors

Android(4292130209)

Have a look what the booklet for
Android(4292130209) contains.

Android(4292130209)	3
<i>Conversions</i>	4
<i>Details</i>	6
<i>Harmonies</i>	11
<i>Previews</i>	23
<i>Color Blindness Simulation</i>	26
<i>CSS Examples</i>	29

Color

Android(4292130209)

Conversions

Conversions Part 1

Format	Color
Hex	D4B5A1
RGB	212, 181, 161
RGB Percent	83%, 71%, 63%
CMY	0.1686, 0.2902, 0.3686
CMYK	0.00, 0.15, 0.24, 0.17
HSL	24°, 37%, 73%
HSV	24°, 24%, 83%
XYZ	50.1083, 49.6180, 40.6545
YIQ	187.9890, 24.8960, 0.3520

Conversions

Conversions Part 2

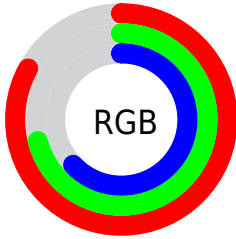
Format	Color
R _Y B	212, 194, 161
Decimal	13940129
CIE Lab	75.83, 8.08, 14.32
CIE LCh	76, 16.441, 60.559
Yxy	49.6180, 0.3569, 0.3535
Android (android.graphics.Color)	4292130209 (0xFFD4B5A1)
YUV	187.9890, -13.3056, 21.0576
Hunter-Lab	70.4400, 3.7078, 15.0888

Details

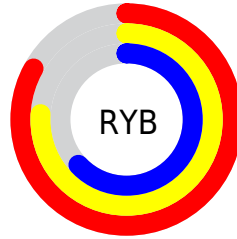
The Android color `4292130209` is a light color, and the websafe version is hex `CC9999`. A complement of this color would be `4288790740`, and the grayscale version is `4290559164`.

A 20% lighter version of the original color is `4294962648`, and `4288512109` is the 20% darker color. If you saturate the color by 10%, you get `4292126860`, and if you desaturate by 10%, it is `4292133558`.

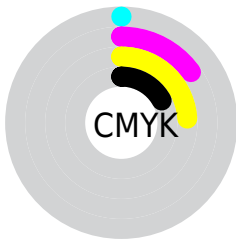
Distribution



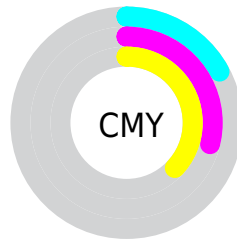
- Red (83%)
- Green (71%)
- Blue (63%)



- Red (83%)
- Yellow (76%)
- Blue (63%)



- Cyan (0%)
- Magenta (15%)
- Yellow (24%)
- Black (17%)



- Cyan (17%)
- Magenta (29%)
- Yellow (37%)

Brightness & Saturation Gradients

These gradients show how the Android color 4292130209 changes by changing the brightness by 10 percent. The first figure shows a shift by +10% for each color and the second figure -10%.

Similar to the brightness gradients but the following saturation gradients show a change of the Android color 4292130209 by changing the saturation by 10% instead.



4292130209



4292130209

4294967295



4290288263



4294962648



4288512109



4294967284



4286736213



4285091646



4283447336



4281869075



4280421888



4278190080



4292130209



4292130209

 4292126860

 4292133558

 4292123511

 4292136907

 4292120161

 4292140257

 4292116812

 4292143606

 4292113719

 4292146687

 4292110370

 4292149247

 4292107021

 4292104960

Harmonies

Analogous

The Analogous color harmony consists of three colors that are next to each other on the color wheel.



4292587948



4292130209



4291279517

Triad

The Triadic color harmony groups three colors that are evenly spaced from another and form a triangle on the color wheel.



4292130209



4288201915



4290688981

Complementary

The Complementary color scheme is a pair of colors which are on the opposite of each other on the color wheel.



4292130209



4288790740

Split Complementary

Split-complementary colors differ from the complementary color scheme. The scheme consists of three colors, the original color and two neighbors of the complement color.



4289445081



4292130209



4287873994

Square

The Square scheme is like the rectangle color scheme, but the four colors are evenly spaced on the color wheel.



4292130209



4289053356



4288332245



4291802058

Rectangle

The Rectangle color scheme consists of four colors that form a rectangle on the color wheel.



4292130209



4290559390



4288332245



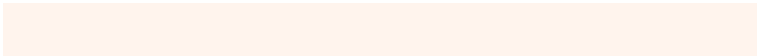
4290296279

Sweetspot

The Sweet Spot groups the original color and five complimentary colors.



4292130209



4294964461



4292125120



4286609781



4278190080



4286611584

Same Dimension

The Same Dimension uses a secret algorithm to generate beautiful new colors.



4292130209



4294955701



4292136609



4285228384



4289413888



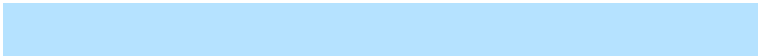
4281012480

Inverse Universe

The Inverse Universe completely reimagines the original color for something new.



4288790740



4290110207



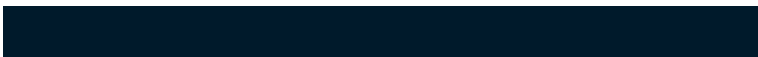
4288784340



4284508011



4278216875



4278196779

Previews

White Background



This preview shows how the Android color 4292130209 looks on a white background.

Color Contrast Check

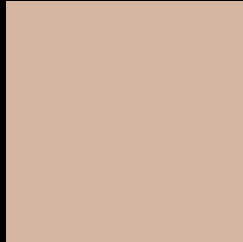
Large Text (above 18pt) WCAG AA × Fail

Any Text WCAG AA × Fail

Large Text (above 18pt) WCAG AAA × Fail

Any Text WCAG AAA × Fail

Black Background



This preview shows how the Android color 4292130209 looks on a black background.

Color Contrast Check

Large Text (above 18pt) WCAG AA ✓ Pass

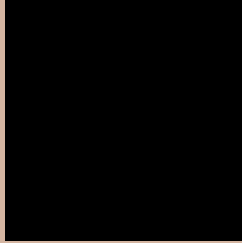
Any Text WCAG AA ✓ Pass

Large Text (above 18pt) WCAG AAA ✓ Pass

Any Text WCAG AAA ✓ Pass

If you want to check with other color combinations, try the [Color Contrast Checker](#).

Android 4292130209 Background



This preview shows how black text looks on a background with the Android color 4292130209.



This preview shows how white text looks on a background with the Android color 4292130209.

Color Blindness Simulation

Color vision deficiency is a very complex topic, and I could not describe the different causes any better than Wikipedia does, so if you want to learn more, you should check out their [article about color blindness](#).


Dichromacy



Original Color
4292130209

Protanopia
4291083172

Deuteranopia
4292261025



Tritanopia
4292391358

Trichromacy



Original Color
4292130209

Protanomaly
4291475875

Deuteranomaly
4292195489

Tritanomaly
4292326067

Monochromacy



Original Color
4292130209

Achromatopsia
4290559164

Achromatomaly
4291148210

CSS Examples

Text

The CSS property to change the color of the text to Android 4292130209 is called "color". The color property can be set on classes, ids or directly on the HTML element.

This example shows how text in the color `rgb(212, 181, 161)` looks like.

```
.text, #text, p{  
    color:rgb(212, 181, 161)  
}
```

If you want to add a text shadow in that color use the text-shadow property, you can generate a text shadow directly with our [CSS Text Shadow Generator](#).

Here you see how black text with a 4 pixel rgb(212, 181, 161) colored shadow looks like.

```
.shadow{ text-shadow: 4px 4px 2px rgb(212, 181, 161) }
```

Border

The CSS property to change the border of an element to Android 4292130209 is called "border". The border property can be set on classes, ids or directly on the HTML element.

This example shows the color as border, it can be applied via the CSS property "border" or "border-color".

```
.border, #border, table{ border:4px solid rgb(212, 181, 161) }
```

If only the border color should be changed use the property `border-color`.

```
.border{ border-color:rgb(212, 181, 161) }
```

If you want to add a box shadow in that color use:

Here you see how a box with a 4 pixel `rgb(212, 181, 161)` colored shadow looks like.

```
.boxshadow{ -moz-box-shadow:4px 4px 4px  
4px rgb(212, 181, 161); -webkit-box-  
shadow:4px 4px 4px 4px rgb(212, 181, 161);  
box-shadow:4px 4px 4px 4px rgb(212, 181,  
161) }
```

Background

The CSS property to change the background color of an element to Android 4292130209 is called "background". The background property can be set on classes, ids or directly on the HTML element.

```
.background, #background, body{  
background: rgb(212, 181, 161) }
```

If only the background color should be changed can be used:

```
.background{ background-color: rgb(212,  
181, 161) }
```

This example shows the color as background, it is applied via the CSS property "background".

To optimize and compress your CSS code, you can use our [online CSS compressor and optimizer](#) based on csstidy. If you want to create a linear or radial gradient as background or border, check our [CSS Gradient Generator](#).

Hey! You found this booklet interesting? Support Converting Colors with the new Membership Option!

The pro membership hides all ads, plus gives you double the colors in the color bucket, and more awesome pro features!

[Learn more, Memberships starting at \\$2.50/m!](#)

**Follow me
on Twitter!**

@ConvertingColor