

Converting Colors

Android(4292130732)

Have a look what the booklet for
Android(4292130732) contains.

Android(4292130732)	3
<i>Conversions</i>	4
<i>Details</i>	6
<i>Harmonies</i>	11
<i>Previews</i>	23
<i>Color Blindness Simulation</i>	26
<i>CSS Examples</i>	29

Color

Android(4292130732)

Conversions

Conversions Part 1

Format	Color
Hex	D4B7AC
RGB	212, 183, 172
RGB Percent	83%, 72%, 67%
CMY	0.1686, 0.2824, 0.3255
CMYK	0.00, 0.14, 0.19, 0.17
HSL	16°, 32%, 75%
HSV	16°, 19%, 83%
XYZ	51.5313, 50.8426, 46.1273
YIQ	190.4170, 20.8150, 2.7270

Conversions

Conversions Part 2

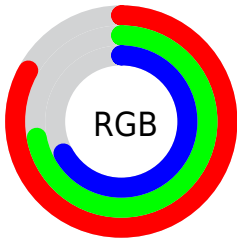
Format	Color
R _Y B	212, 187, 172
Decimal	13940652
CIE Lab	76.58, 8.64, 9.42
CIE LCh	77, 12.780, 47.469
Yxy	50.8426, 0.3470, 0.3424
Android (android.graphics.Color)	4292130732 (0xFFD4B7AC)
YUV	190.4170, -9.0796, 18.9283
Hunter-Lab	71.3040, 4.2197, 11.5574

Details

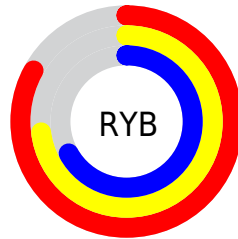
The Android color `4292130732` is a light color, and the websafe version is hex `CC9999`. A complement of this color would be `4289513940`, and the grayscale version is `4290690750`.

A 20% lighter version of the original color is `4294963171`, and `4288512632` is the 20% darker color. If you saturate the color by 10%, you get `4292126871`, and if you desaturate by 10%, it is `4292134593`.

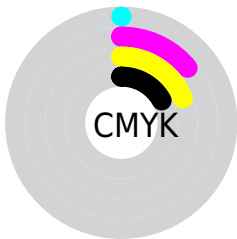
Distribution



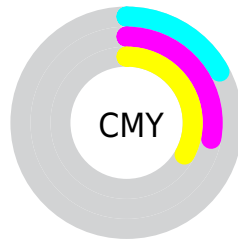
- Red (83%)
- Green (72%)
- Blue (67%)



- Red (83%)
- Yellow (73%)
- Blue (67%)



- Cyan (0%)
- Magenta (14%)
- Yellow (19%)
- Black (17%)



- Cyan (17%)
- Magenta (28%)
- Yellow (33%)

Brightness & Saturation Gradients

These gradients show how the Android color 4292130732 changes by changing the brightness by 10 percent. The first figure shows a shift by +10% for each color and the second figure -10%.

Similar to the brightness gradients but the following saturation gradients show a change of the Android color 4292130732 by changing the saturation by 10% instead.

 4292130732

 4292130732

4294967295

 4290288785


 4294963171

 4288512632

 4286802271

 4285092167

 4283447857

 4281934876

 4280553217

 4278190080

 4292130732

 4292130732

 4292126871

 4292134593

 4292122754

 4292138710

 4292118892

 4292142572

 4292115031

 4292146431

 4292110914

 4292149247

 4292107053

 4292102936

 4292099074

 4292098560

Harmonies

Analogous

The Analogous color harmony consists of three colors that are next to each other on the color wheel.



4292261302



4292130732



4291607206

Triad

The Triadic color harmony groups three colors that are evenly spaced from another and form a triangle on the color wheel.



4292130732



4289119415



4290362579

Complementary

The Complementary color scheme is a pair of colors which are on the opposite of each other on the color wheel.



4292130732



4289513940

Split Complementary

Split-complementary colors differ from the complementary color scheme. The scheme consists of three colors, the original color and two neighbors of the complement color.



4289445844



4292130732



4288660676

Square

The Square scheme is like the rectangle color scheme, but the four colors are evenly spaced on the color wheel.



4292130732



4289905325



4288791246



4291344589

Rectangle

The Rectangle color scheme consists of four colors that form a rectangle on the color wheel.



4292130732



4291083686



4288791246



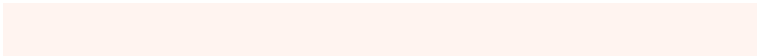
4290035156

Sweetspot

The Sweet Spot groups the original color and five complimentary colors.



4292130732



4294964464



4292127945



4286609783



4278190080



4286611584

Same Dimension

The Same Dimension uses a secret algorithm to generate beautiful new colors.



4292130732



4294956228



4292135852



4285227872



4289408768



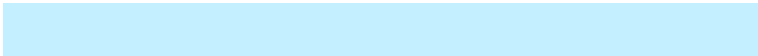
4281011200

Inverse Universe

The Inverse Universe completely reimagines the original color for something new.



4289513940



4291096575



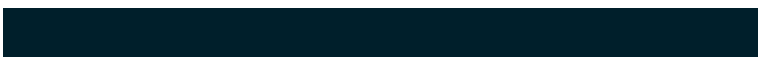
4289508820



4284508267



4278221995



4278198059

Previews

White Background



This preview shows how the Android color 4292130732 looks on a white background.

Color Contrast Check

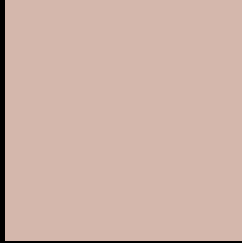
Large Text (above 18pt) WCAG AA × Fail

Any Text WCAG AA × Fail

Large Text (above 18pt) WCAG AAA × Fail

Any Text WCAG AAA × Fail

Black Background



This preview shows how the Android color 4292130732 looks on a black background.

Color Contrast Check

Large Text (above 18pt) WCAG AA ✓ Pass

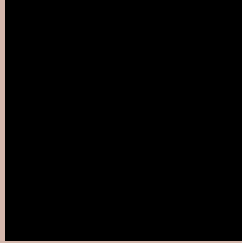
Any Text WCAG AA ✓ Pass

Large Text (above 18pt) WCAG AAA ✓ Pass

Any Text WCAG AAA ✓ Pass

If you want to check with other color combinations, try the [Color Contrast Checker](#).

Android 4292130732 Background



This preview shows how black text looks on a background with the Android color 4292130732.



This preview shows how white text looks on a background with the Android color 4292130732.

Color Blindness Simulation

Color vision deficiency is a very complex topic, and I could not describe the different causes any better than Wikipedia does, so if you want to learn more, you should check out their [article about color blindness](#).

Dichromacy



Original Color
4292130732

Protanopia
4291083439

Deuteranopia
4292261548

Trichromacy



Original Color
4292130732

Protanomaly
4291476142

Deuteranomaly
4292196012

Tritanomaly
4292261306

Monochromacy



Original Color
4292130732

Achromatopsia
4290690750

Achromatomaly
4291214263

CSS Examples

Text

The CSS property to change the color of the text to Android 4292130732 is called "color". The color property can be set on classes, ids or directly on the HTML element.

This example shows how text in the color `rgb(212, 183, 172)` looks like.

```
.text, #text, p{  
    color:rgb(212, 183, 172)  
}
```

If you want to add a text shadow in that color use the text-shadow property, you can generate a text shadow directly with our [CSS Text Shadow Generator](#).

Here you see how black text with a 4 pixel rgb(212, 183, 172) colored shadow looks like.

```
.shadow{ text-shadow: 4px 4px 2px rgb(212, 183, 172) }
```

Border

The CSS property to change the border of an element to Android 4292130732 is called "border". The border property can be set on classes, ids or directly on the HTML element.

This example shows the color as border, it can be applied via the CSS property "border" or "border-color".

```
.border, #border, table{ border:4px solid rgb(212, 183, 172) }
```

If only the border color should be changed use the property `border-color`.

```
.border{ border-color:rgb(212, 183, 172) }
```

If you want to add a box shadow in that color use:

Here you see how a box with a 4 pixel `rgb(212, 183, 172)` colored shadow looks like.

```
.boxshadow{ -moz-box-shadow:4px 4px 4px 4px rgb(212, 183, 172); -webkit-box-shadow:4px 4px 4px 4px rgb(212, 183, 172); box-shadow:4px 4px 4px 4px rgb(212, 183, 172) }
```

Background

The CSS property to change the background color of an element to Android 4292130732 is called "background". The background property can be set on classes, ids or directly on the HTML element.

```
.background, #background, body{  
background: rgb(212, 183, 172) }
```

If only the background color should be changed can be used:

```
.background{ background-color: rgb(212,  
183, 172) }
```

This example shows the color as background, it is applied via the CSS property "background".

To optimize and compress your CSS code, you can use our [online CSS compressor and optimizer](#) based on csstidy. If you want to create a linear or radial gradient as background or border, check our [CSS Gradient Generator](#).

Hey! You found this booklet interesting? Support Converting Colors with the new Membership Option!

The pro membership hides all ads, plus gives you double the colors in the color bucket, and more awesome pro features!

[Learn more, Memberships starting at \\$2.50/m!](#)

**Follow me
on Twitter!**

@ConvertingColor