

Converting Colors

Android(4292131761)

Have a look what the booklet for
Android(4292131761) contains.

Android(4292131761)	3
<i>Conversions</i>	4
<i>Details</i>	6
<i>Harmonies</i>	11
<i>Previews</i>	23
<i>Color Blindness Simulation</i>	26
<i>CSS Examples</i>	29

Color

Android(4292131761)

Conversions

Conversions Part 1

Format	Color
Hex	D4BBB1
RGB	212, 187, 177
RGB Percent	83%, 73%, 69%
CMY	0.1686, 0.2667, 0.3059
CMYK	0.00, 0.12, 0.17, 0.17
HSL	17°, 29%, 76%
HSV	17°, 17%, 83%
XYZ	52.8575, 52.7120, 48.9835
YIQ	193.3350, 18.1100, 2.1900

Conversions

Conversions Part 2

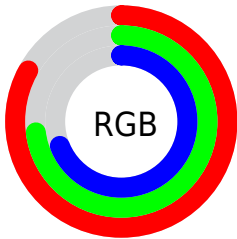
Format	Color
R_{YB}	212, 191, 177
Decimal	13941681
CIE Lab	77.70, 7.28, 8.31
CIE LCh	78, 11.046, 48.807
Yxy	52.7120, 0.3420, 0.3411
Android (android.graphics.Color)	4292131761 (0xFFD4BBB1)
YUV	193.3350, -8.0532, 16.3692
Hunter-Lab	72.6030, 2.8988, 10.8206

Details

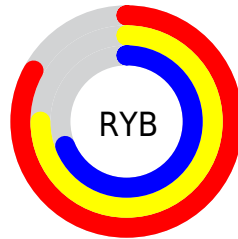
The Android color `4292131761` is a light color, and the websafe version is hex `CCCCCC`. A complement of this color would be `4289841876`, and the grayscale version is `4290888129`.

A 20% lighter version of the original color is `4294964201`, and `4288513660` is the 20% darker color. If you saturate the color by 10%, you get `4292127900`, and if you desaturate by 10%, it is `4292135622`.

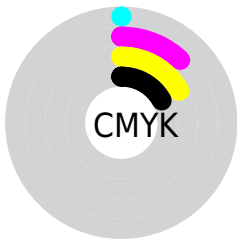
Distribution



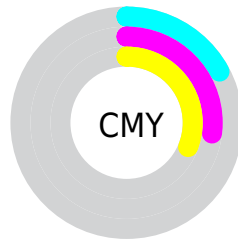
- Red (83%)
- Green (73%)
- Blue (69%)



- Red (83%)
- Yellow (75%)
- Blue (69%)



- Cyan (0%)
- Magenta (12%)
- Yellow (17%)
- Black (17%)



- Cyan (17%)
- Magenta (27%)
- Yellow (31%)

Brightness & Saturation Gradients

These gradients show how the Android color 4292131761 changes by changing the brightness by 10 percent. The first figure shows a shift by +10% for each color and the second figure -10%.

Similar to the brightness gradients but the following saturation gradients show a change of the Android color 4292131761 by changing the saturation by 10% instead.

 4292131761

 4292131761

4294967295

 4290289814

 4294964201

 4288513660

 4286803300

 4285092940

 4283514165

 4281935648

 4280554248

 4278190080

 4292131761

 4292131761

 4292127900

 4292135622

 4292124039

 4292139483

 4292120177

 4292143345

 4292116060

 4292147455

 4292112199

 4292149247

 4292108338

 4292104477

 4292100615

 4292099328

Harmonies

Analogous

The Analogous color harmony consists of three colors that are next to each other on the color wheel.



4292262330



4292131761



4291608236

Triad

The Triadic color harmony groups three colors that are evenly spaced from another and form a triangle on the color wheel.



4292131761



4289513148



4290625491

Complementary

The Complementary color scheme is a pair of colors which are on the opposite of each other on the color wheel.



4292131761



4289841876

Split Complementary

Split-complementary colors differ from the complementary color scheme. The scheme consists of three colors, the original color and two neighbors of the complement color.



4289839828



4292131761



4289185478

Square

The Square scheme is like the rectangle color scheme, but the four colors are evenly spaced on the color wheel.



4292131761



4290167986



4289316303



4291476686

Rectangle

The Rectangle color scheme consists of four colors that form a rectangle on the color wheel.



4292131761



4291149996



4289316303



4290363604

Sweetspot

The Sweet Spot groups the original color and five complimentary colors.



4292131761



4294964978



4292129226



4286610040



4278190080



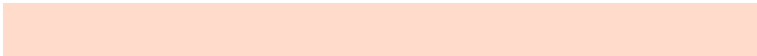
4286611584

Same Dimension

The Same Dimension uses a secret algorithm to generate beautiful new colors.



4292131761



4294958028



4292136113



4285227872



4289409280



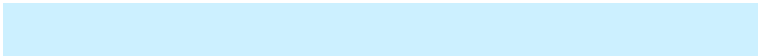
4281011200

Inverse Universe

The Inverse Universe completely reimagines the original color for something new.



4289841876



4291621119



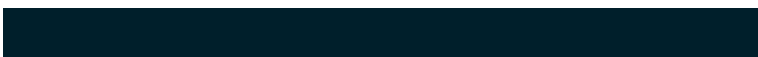
4289837524



4284508267



4278221483



4278198059

Previews

White Background



This preview shows how the Android color 4292131761 looks on a white background.

Color Contrast Check

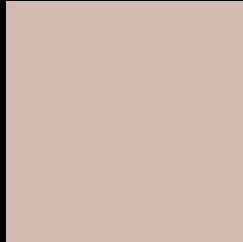
Large Text (above 18pt) WCAG AA × Fail

Any Text WCAG AA × Fail

Large Text (above 18pt) WCAG AAA × Fail

Any Text WCAG AAA × Fail

Black Background



This preview shows how the Android color 4292131761 looks on a black background.

Color Contrast Check

Large Text (above 18pt) WCAG AA ✓ Pass

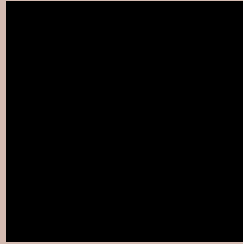
Any Text WCAG AA ✓ Pass

Large Text (above 18pt) WCAG AAA ✓ Pass

Any Text WCAG AAA ✓ Pass

If you want to check with other color combinations, try the [Color Contrast Checker](#).

Android 4292131761 Background



This preview shows how black text looks on a background with the Android color 4292131761.



This preview shows how white text looks on a background with the Android color 4292131761.

Color Blindness Simulation

Color vision deficiency is a very complex topic, and I could not describe the different causes any better than Wikipedia does, so if you want to learn more, you should check out their [article about color blindness](#).


Dichromacy



Original Color
4292131761

Protanopia
4291280819

Deuteranopia
4292393393



Tritanopia
4292327622

Trichromacy



Original Color
4292131761

Protanomaly
4291608242

Deuteranomaly
4292328113

Tritanomaly
4292262334

Monochromacy



Original Color
4292131761

Achromatopsia
4290888129

Achromatomaly
4291346363

CSS Examples

Text

The CSS property to change the color of the text to Android 4292131761 is called "color". The color property can be set on classes, ids or directly on the HTML element.

This example shows how text in the color `rgb(212, 187, 177)` looks like.

```
.text, #text, p{  
    color:rgb(212, 187, 177)  
}
```

If you want to add a text shadow in that color use the text-shadow property, you can generate a text shadow directly with our [CSS Text Shadow Generator](#).

Here you see how black text with a 4 pixel rgb(212, 187, 177) colored shadow looks like.

```
.shadow{ text-shadow: 4px 4px 2px rgb(212, 187, 177) }
```

Border

The CSS property to change the border of an element to Android 4292131761 is called "border". The border property can be set on classes, ids or directly on the HTML element.

This example shows the color as border, it can be applied via the CSS property "border" or "border-color".

```
.border, #border, table{ border:4px solid rgb(212, 187, 177) }
```

If only the border color should be changed use the property `border-color`.

```
.border{ border-color:rgb(212, 187, 177) }
```

If you want to add a box shadow in that color use:

Here you see how a box with a 4 pixel `rgb(212, 187, 177)` colored shadow looks like.

```
.boxshadow{ -moz-box-shadow:4px 4px 4px  
4px rgb(212, 187, 177); -webkit-box-  
shadow:4px 4px 4px 4px rgb(212, 187, 177);  
box-shadow:4px 4px 4px 4px rgb(212, 187,  
177) }
```

Background

The CSS property to change the background color of an element to Android 4292131761 is called "background". The background property can be set on classes, ids or directly on the HTML element.

```
.background, #background, body{  
background: rgb(212, 187, 177) }
```

If only the background color should be changed can be used:

```
.background{ background-color: rgb(212,  
187, 177) }
```

This example shows the color as background, it is applied via the CSS property "background".

To optimize and compress your CSS code, you can use our [online CSS compressor and optimizer](#) based on csstidy. If you want to create a linear or radial gradient as background or border, check our [CSS Gradient Generator](#).

Hey! You found this booklet interesting? Support Converting Colors with the new Membership Option!

The pro membership hides all ads, plus gives you double the colors in the color bucket, and more awesome pro features!

[Learn more, Memberships starting at \\$2.50/m!](#)

**Follow me
on Twitter!**

@ConvertingColor