

# Converting Colors

Android(4292132800)

Have a look what the booklet for  
Android(4292132800) contains.

<b>Android(4292132800)</b> .....	3
<b><i>Conversions</i></b> .....	4
<b><i>Details</i></b> .....	6
<b><i>Harmonies</i></b> .....	11
<b><i>Previews</i></b> .....	23
<b><i>Color Blindness Simulation</i></b> .....	26
<b><i>CSS Examples</i></b> .....	29

# **Color**

**Android(4292132800)**

# Conversions

## Conversions Part 1

Format	Color
Hex	D4BFC0
RGB	212, 191, 192
RGB Percent	83%, 75%, 75%
CMY	0.1686, 0.2510, 0.2471
CMYK	0.00, 0.10, 0.09, 0.17
HSL	357°, 20%, 79%
HSV	357°, 10%, 83%
XYZ	55.2966, 55.0644, 57.5832
YIQ	197.3930, 12.1950, 4.7630

# Conversions

## Conversions Part 2

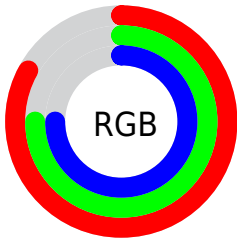
Format	Color
<a href="#">RYB</a>	<a href="#">212, 191, 192</a>
Decimal	<a href="#">13942720</a>
CIELab	<a href="#">79.08, 7.58, 2.19</a>
CIELCh	<a href="#">79, 7.894, 16.118</a>
Yxy	<a href="#">55.0644, 0.3293, 0.3279</a>
Android (android.graphics.Color)	<a href="#">4292132800 (0xFFD4BFC0)</a>
YUV	<a href="#">197.3930, -2.6587, 12.8103</a>
Hunter-Lab	<a href="#">74.2054, 3.1557, 5.9349</a>

# Details

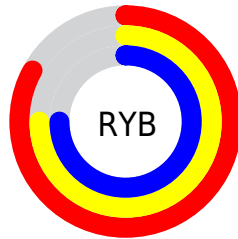
The Android color `4292132800` is a light color, and the websafe version is hex `CCCCCC`. A complement of this color would be `4290761939`, and the grayscale version is `4291151301`.

A 20% lighter version of the original color is `4294965240`, and `4288514699` is the 20% darker color. If you saturate the color by 10%, you get `4292127404`, and if you desaturate by 10%, it is `4292138196`.

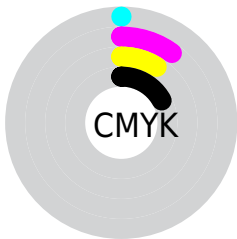
# Distribution



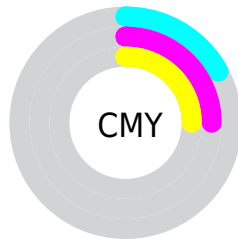
- Red (83%)
- Green (75%)
- Blue (75%)



- Red (83%)
- Yellow (75%)
- Blue (75%)



- Cyan (0%)
- Magenta (10%)
- Yellow (9%)
- Black (17%)



- Cyan (17%)
- Magenta (25%)
- Yellow (25%)

# Brightness & Saturation Gradients

These gradients show how the Android color 4292132800 changes by changing the brightness by 10 percent. The first figure shows a shift by +10% for each color and the second figure -10%.

Similar to the brightness gradients but the following saturation gradients show a change of the Android color 4292132800 by changing the saturation by 10% instead.



 4292132800

 4292132800

4294967295

 4290290853

 4294965240

 4288514699

 4286804081

 4285159513

 4283514945

 4282001963

 4280555031

 4278779904

 4278190080

 4292132800

 4292132800

 4292127404

 4292138196

 4292122008

 4292143592

 4292116355

 4292149245

 4292110959

 4292149247

 4292105563

 4292100167

 4292094771

 4292089118

 4292083722

# Harmonies

## Analogous

The Analogous color harmony consists of three colors that are next to each other on the color wheel.



4291936200



4292132800



4292067513

# Triad

The Triadic color harmony groups three colors that are evenly spaced from another and form a triangle on the color wheel.



4292132800



4290627513



4290364882

# Complementary

The Complementary color scheme is a pair of colors which are on the opposite of each other on the color wheel.



4292132800



4290761939

# Split Complementary

Split-complementary colors differ from the complementary color scheme. The scheme consists of three colors, the original color and two neighbors of the complement color.



4289972174



4292132800



4290169024

# Square

The Square scheme is like the rectangle color scheme, but the four colors are evenly spaced on the color wheel.



4292132800



4291216822



4289906888



4290888658

# Rectangle

The Rectangle color scheme consists of four colors that form a rectangle on the color wheel.



4292132800



4291871159



4289906888



4290168529

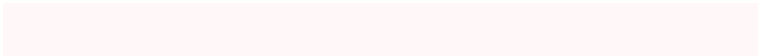


# Sweetspot

The Sweet Spot groups the original color and five complimentary colors.



4292132800



4294965240



4292067284



4286610043



4278190080



4286611584

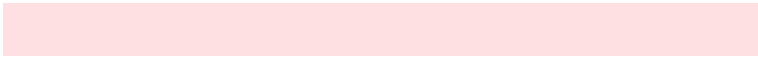


# Same Dimension

The Same Dimension uses a secret algorithm to generate beautiful new colors.



4292132800



4294959330



4292135103



4285227105



4289396744



4281008130



# Inverse Universe

The Inverse Universe completely reimagines the original color for something new.



4292132800



4294959330



4290759636



4285227105



4289396744

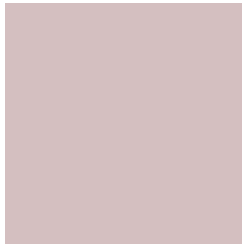


4281008130



# Previews

## White Background



This preview shows how the Android color 4292132800 looks on a white background.

## Color Contrast Check

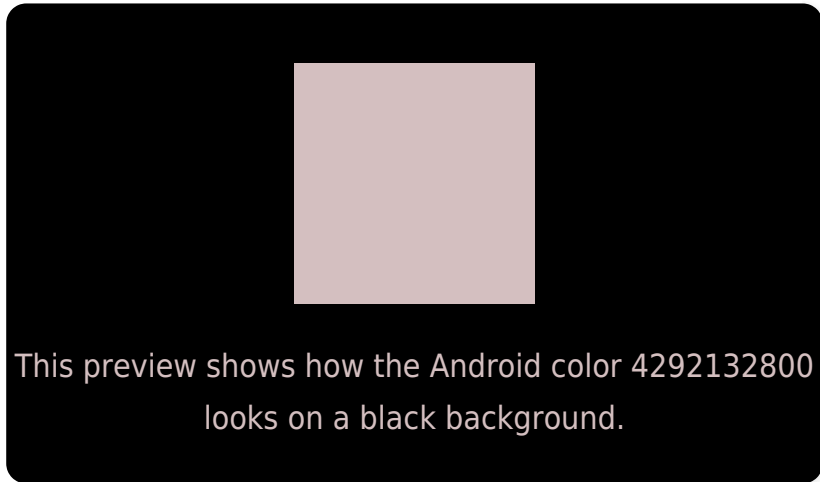
Large Text (above 18pt) WCAG AA × Fail

Any Text WCAG AA × Fail

Large Text (above 18pt) WCAG AAA × Fail

Any Text WCAG AAA × Fail

# Black Background



## Color Contrast Check

Large Text (above 18pt) WCAG AA ✓ Pass

Any Text WCAG AA ✓ Pass

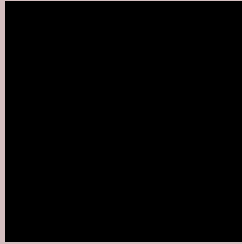
Large Text (above 18pt) WCAG AAA ✓ Pass

Any Text WCAG AAA ✓ Pass

If you want to check with other color combinations, try the [Color Contrast Checker](#).



# Android 4292132800 Background



This preview shows how black text looks on a background with the Android color 4292132800.




This preview shows how white text looks on a background with the Android color 4292132800.

# Color Blindness Simulation

Color vision deficiency is a very complex topic, and I could not describe the different causes any better than Wikipedia does, so if you want to learn more, you should check out their [article about color blindness](#).

## Dichromacy

	<b>Original Color</b> 4292132800
	<b>Protanopia</b> 4291347394
	<b>Deuteranopia</b> 4292394432



**Tritanopia**  
4292263372

# Trichromacy



**Original Color**  
4292132800

**Protanomaly**  
4291609281

**Deuteranomaly**  
4292329152

**Tritanomaly**  
4292198088

# Monochromacy



**Original Color**  
4292132800

**Achromatopsia**  
4291151301

**Achromatomaly**  
4291478467

# CSS Examples

## Text

The CSS property to change the color of the text to Android 4292132800 is called "color". The color property can be set on classes, ids or directly on the HTML element.

This example shows how text in the color `rgb(212, 191, 192)` looks like.

```
.text, #text, p{  
    color:rgb(212, 191, 192)  
}
```

If you want to add a text shadow in that color use the text-shadow property, you can generate a text shadow directly with our [CSS Text Shadow Generator](#).

Here you see how black text with a 4 pixel rgb(212, 191, 192) colored shadow looks like.

```
.shadow{ text-shadow: 4px 4px 2px rgb(212, 191, 192) }
```

## Border

The CSS property to change the border of an element to Android 4292132800 is called "border". The border property can be set on classes, ids or directly on the HTML element.

This example shows the color as border, it can be applied via the CSS property "border" or "border-color".

```
.border, #border, table{ border:4px solid rgb(212, 191, 192) }
```

If only the border color should be changed use the property `border-color`.

```
.border{ border-color:rgb(212, 191, 192) }
```

If you want to add a box shadow in that color use:

Here you see how a box with a 4 pixel `rgb(212, 191, 192)` colored shadow looks like.

```
.boxshadow{ -moz-box-shadow:4px 4px 4px  
4px rgb(212, 191, 192); -webkit-box-  
shadow:4px 4px 4px 4px rgb(212, 191, 192);  
box-shadow:4px 4px 4px 4px rgb(212, 191,  
192) }
```

# Background

The CSS property to change the background color of an element to Android 4292132800 is called "background". The background property can be set on classes, ids or directly on the HTML element.

```
.background, #background, body{  
background: rgb(212, 191, 192) }
```

If only the background color should be changed can be used:

```
.background{ background-color: rgb(212,  
191, 192) }
```

This example shows the color as background, it is applied via the CSS property "background".

To optimize and compress your CSS code, you can use our [online CSS compressor and optimizer](#) based on csstidy. If you want to create a linear or radial gradient as background or border, check our [CSS Gradient Generator](#).



Hey! You found this booklet interesting? Support Converting Colors with the new Membership Option!

The pro membership hides all ads, plus gives you double the colors in the color bucket, and more awesome pro features!

**[Learn more, Memberships starting at \\$2.50/m!](#)**

**Follow me  
on Twitter!**

@ConvertingColor