

# Converting Colors

Android(4292190096)

Have a look what the booklet for  
Android(4292190096) contains.

<b>Android(4292190096)</b> .....	3
<b><i>Conversions</i></b> .....	4
<b><i>Details</i></b> .....	6
<b><i>Harmonies</i></b> .....	11
<b><i>Previews</i></b> .....	23
<b><i>Color Blindness Simulation</i></b> .....	26
<b><i>CSS Examples</i></b> .....	29

# **Color**

**Android(4292190096)**

# Conversions

## Conversions Part 1

Format	Color
Hex	D59F90
RGB	213, 159, 144
RGB Percent	84%, 62%, 56%
CMY	0.1647, 0.3765, 0.4353
CMYK	0.00, 0.25, 0.32, 0.16
HSL	13°, 45%, 70%
HSV	13°, 32%, 84%
XYZ	44.8728, 40.9560, 31.9258
YIQ	173.4360, 36.9990, 6.7830

# Conversions

## Conversions Part 2

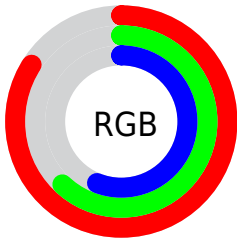
Format	Color
R <sub>Y</sub> B	213, 163, 144
Decimal	14000016
CIE Lab	70.15, 18.02, 15.66
CIE LCh	70, 23.868, 40.994
Yxy	40.9560, 0.3811, 0.3478
Android (android.graphics.Color)	4292190096 (0xFFD59F90)
YUV	173.4360, -14.5119, 34.6976
Hunter-Lab	63.9969, 13.1644, 15.2201

# Details

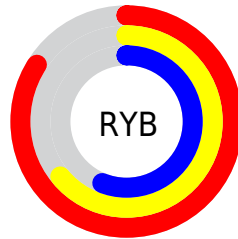
The Android color `4292190096` is a light color, and the websafe version is hex `CC9999`. A complement of this color would be `4287678165`, and the grayscale version is `4289638062`.

A 20% lighter version of the original color is `4294956742`, and `4288506718` is the 20% darker color. If you saturate the color by 10%, you get `4292185723`, and if you desaturate by 10%, it is `4292194469`.

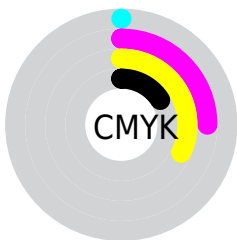
# Distribution



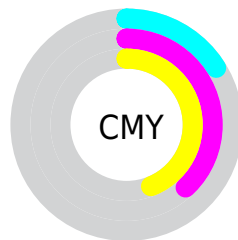
- Red (84%)
- Green (62%)
- Blue (56%)



- Red (84%)
- Yellow (64%)
- Blue (56%)



- Cyan (0%)
- Magenta (25%)
- Yellow (32%)
- Black (16%)



- Cyan (16%)
- Magenta (38%)
- Yellow (44%)

# Brightness & Saturation Gradients

These gradients show how the Android color 4292190096 changes by changing the brightness by 10 percent. The first figure shows a shift by +10% for each color and the second figure -10%.

Similar to the brightness gradients but the following saturation gradients show a change of the Android color 4292190096 by changing the saturation by 10% instead.



 4292190096

 4292190096

4294967295

 4290348406

 4294956742

 4288506718

 4294963938

 4286731078

 4284955440

 4283311387

 4281733120

 4280287233

 4278190080

 4292190096

 4292190096

 4292185723

 4292194469

 4292181605

 4292198587

 4292177232

 4292202960

 4292172859

 4292207333

 4292168742

 4292211451

 4292164368

 4292214783

 4292161024

# Harmonies

## Analogous

The Analogous color harmony consists of three colors that are next to each other on the color wheel.



4292385956



4292190096



4291339651

# Triad

The Triadic color harmony groups three colors that are evenly spaced from another and form a triangle on the color wheel.



4292190096



4286822301



4288457686

# Complementary

The Complementary color scheme is a pair of colors which are on the opposite of each other on the color wheel.



4292190096



4287678165

# Split Complementary

Split-complementary colors differ from the complementary color scheme. The scheme consists of three colors, the original color and two neighbors of the complement color.



4286624468



4292190096



4285642931

# Square

The Square scheme is like the rectangle color scheme, but the four colors are evenly spaced on the color wheel.



4292190096



4288394122



4285445831



4290356172

# Rectangle

The Rectangle color scheme consists of four colors that form a rectangle on the color wheel.



4292190096



4290488960



4285445831



4287802838

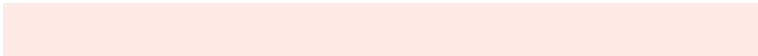


# Sweetspot

The Sweet Spot groups the original color and five complimentary colors.



4292190096



4294962150



4292186310



4286608496



4278190080



4286611584



# Same Dimension

The Same Dimension uses a secret algorithm to generate beautiful new colors.



4292190096



4294947228



4292198800



4285227872



4289406208



4281010432

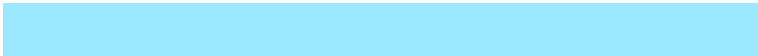


# Inverse Universe

The Inverse Universe completely reimagines the original color for something new.



4287678165



4288473599



4287669461



4284508523



4278224555



4278198827



# Previews

## White Background



This preview shows how the Android color 4292190096 looks on a white background.

## Color Contrast Check

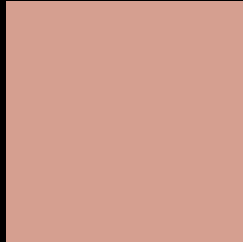
Large Text (above 18pt) WCAG AA × Fail

Any Text WCAG AA × Fail

Large Text (above 18pt) WCAG AAA × Fail

Any Text WCAG AAA × Fail

# Black Background



This preview shows how the Android color 4292190096 looks on a black background.

## Color Contrast Check

Large Text (above 18pt) WCAG AA ✓ Pass

Any Text WCAG AA ✓ Pass

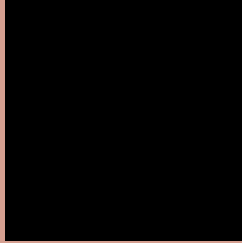
Large Text (above 18pt) WCAG AAA ✓ Pass

Any Text WCAG AAA ✓ Pass

If you want to check with other color combinations, try the [Color Contrast Checker](#).



# Android 4292190096 Background



This preview shows how black text looks on a background with the Android color 4292190096.




This preview shows how white text looks on a background with the Android color 4292190096.

# Color Blindness Simulation

Color vision deficiency is a very complex topic, and I could not describe the different causes any better than Wikipedia does, so if you want to learn more, you should check out their [article about color blindness](#).

## Dichromacy





**Tritanopia**  
4292320423

# Trichromacy



**Original Color**  
4292190096

**Protanomaly**  
4290815892

**Deuteranomaly**  
4291535759

**Tritanomaly**  
4292255135

# Monochromacy



**Original Color**  
4292190096

**Achromatopsia**  
4289572269

**Achromatomaly**  
4290554018

# CSS Examples

## Text

The CSS property to change the color of the text to Android 4292190096 is called "color". The color property can be set on classes, ids or directly on the HTML element.

This example shows how text in the color `rgb(213, 159, 144)` looks like.

```
.text, #text, p{  
    color:rgb(213, 159, 144)  
}
```

If you want to add a text shadow in that color use the text-shadow property, you can generate a text shadow directly with our [CSS Text Shadow Generator](#).

Here you see how black text with a 4 pixel rgb(213, 159, 144) colored shadow looks like.

```
.shadow{ text-shadow: 4px 4px 2px rgb(213, 159, 144) }
```

## Border

The CSS property to change the border of an element to Android 4292190096 is called "border". The border property can be set on classes, ids or directly on the HTML element.

This example shows the color as border, it can be applied via the CSS property "border" or "border-color".

```
.border, #border, table{ border:4px solid rgb(213, 159, 144) }
```

If only the border color should be changed use the property `border-color`.

```
.border{ border-color:rgb(213, 159, 144) }
```

If you want to add a box shadow in that color use:

Here you see how a box with a 4 pixel `rgb(213, 159, 144)` colored shadow looks like.

```
.boxshadow{ -moz-box-shadow:4px 4px 4px  
4px rgb(213, 159, 144); -webkit-box-  
shadow:4px 4px 4px 4px rgb(213, 159, 144);  
box-shadow:4px 4px 4px 4px rgb(213, 159,  
144) }
```

# Background

The CSS property to change the background color of an element to Android 4292190096 is called "background". The background property can be set on classes, ids or directly on the HTML element.

```
.background, #background, body{  
background: rgb(213, 159, 144) }
```

If only the background color should be changed can be used:

```
.background{ background-color: rgb(213,  
159, 144) }
```

This example shows the color as background, it is applied via the CSS property "background".

To optimize and compress your CSS code, you can use our [online CSS compressor and optimizer](#) based on csstidy. If you want to create a linear or radial gradient as background or border, check our [CSS Gradient Generator](#).



Hey! You found this booklet interesting? Support Converting Colors with the new Membership Option!

The pro membership hides all ads, plus gives you double the colors in the color bucket, and more awesome pro features!

**[Learn more, Memberships starting at \\$2.50/m!](#)**

**Follow me  
on Twitter!**

@ConvertingColor