

Converting Colors

Android(4292190861)

Have a look what the booklet for
Android(4292190861) contains.

Android(4292190861)	3
<i>Conversions</i>	4
<i>Details</i>	6
<i>Harmonies</i>	11
<i>Previews</i>	23
<i>Color Blindness Simulation</i>	26
<i>CSS Examples</i>	29

Color

Android(4292190861)

Conversions

Conversions Part 1

Format	Color
Hex	D5A28D
RGB	213, 162, 141
RGB Percent	84%, 64%, 55%
CMY	0.1647, 0.3647, 0.4471
CMYK	0.00, 0.24, 0.34, 0.16
HSL	17°, 46%, 69%
HSV	17°, 34%, 84%
XYZ	45.1686, 41.9099, 30.9081
YIQ	174.8550, 37.1370, 4.2810

Conversions

Conversions Part 2

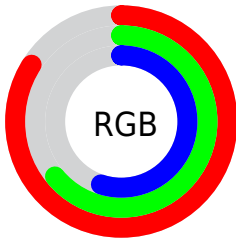
Format	Color
R_{YB}	213, 171, 141
Decimal	14000781
CIE Lab	70.81, 16.01, 18.23
CIE LCh	71, 24.260, 48.710
Yxy	41.9099, 0.3828, 0.3552
Android (android.graphics.Color)	4292190861 (0xFFD5A28D)
YUV	174.8550, -16.6905, 33.4532
Hunter-Lab	64.7378, 11.2511, 17.0094

Details

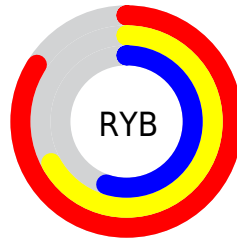
The Android color `4292190861` is a light color, and the websafe version is hex `CC9999`. A complement of this color would be `4287480021`, and the grayscale version is `4289703855`.

A 20% lighter version of the original color is `4294957507`, and `4288507483` is the 20% darker color. If you saturate the color by 10%, you get `4292187000`, and if you desaturate by 10%, it is `4292194722`.

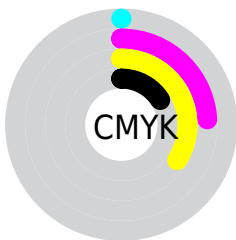
Distribution



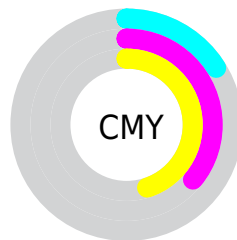
- Red (84%)
- Green (64%)
- Blue (55%)



- Red (84%)
- Yellow (67%)
- Blue (55%)



- Cyan (0%)
- Magenta (24%)
- Yellow (34%)
- Black (16%)



- Cyan (16%)
- Magenta (36%)
- Yellow (45%)

Brightness & Saturation Gradients

These gradients show how the Android color 4292190861 changes by changing the brightness by 10 percent. The first figure shows a shift by +10% for each color and the second figure -10%.

Similar to the brightness gradients but the following saturation gradients show a change of the Android color 4292190861 by changing the saturation by 10% instead.



4292190861



4292190861

4294967295



4290349171



4294957507



4288507483



4294964703



4286731843



4294967291



4284956205



4283312152



4281733888



4280221696



4278190080



4292190861



4292190861

 4292187000

 4292194722

 4292183138

 4292198584

 4292179277

 4292202445

 4292175416

 4292206306

 4292171555

 4292210168

 4292167437

 4292214271

 4292165120

 4292214783

Harmonies

Analogous

The Analogous color harmony consists of three colors that are next to each other on the color wheel.



4292583072



4292190861



4291144066

Triad

The Triadic color harmony groups three colors that are evenly spaced from another and form a triangle on the color wheel.



4292190861



4286495140



4289113047

Complementary

The Complementary color scheme is a pair of colors which are on the opposite of each other on the color wheel.



4292190861



4287480021

Split Complementary

Split-complementary colors differ from the complementary color scheme. The scheme consists of three colors, the original color and two neighbors of the complement color.



4287083224



4292190861



4285512379

Square

The Square scheme is like the rectangle color scheme, but the four colors are evenly spaced on the color wheel.



4292190861



4288067216



4285708238



4290880459

Rectangle

The Rectangle color scheme consists of four colors that form a rectangle on the color wheel.



4292190861



4290227842



4285708238



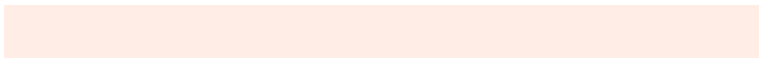
4288392665

Sweetspot

The Sweet Spot groups the original color and five complimentary colors.



4292190861



4294962662



4292185537



4286608752



4278190080



4286611584

Same Dimension

The Same Dimension uses a secret algorithm to generate beautiful new colors.



4292190861



4294948246



4292199821



4285228128



4289409536



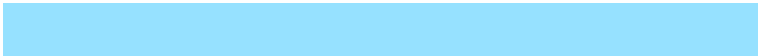
4281011456

Inverse Universe

The Inverse Universe completely reimagines the original color for something new.



4287480021



4288078335



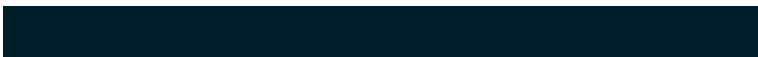
4287471061



4284508267



4278221227



4278198059

Previews

White Background



This preview shows how the Android color 4292190861 looks on a white background.

Color Contrast Check

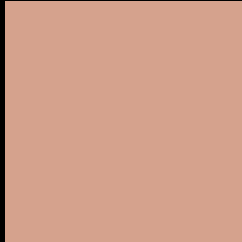
Large Text (above 18pt) WCAG AA × Fail

Any Text WCAG AA × Fail

Large Text (above 18pt) WCAG AAA × Fail

Any Text WCAG AAA × Fail

Black Background



This preview shows how the Android color 4292190861 looks on a black background.

Color Contrast Check

Large Text (above 18pt) WCAG AA ✓ Pass

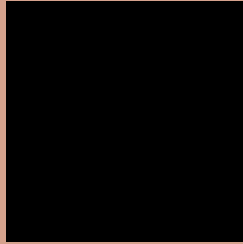
Any Text WCAG AA ✓ Pass

Large Text (above 18pt) WCAG AAA ✓ Pass

Any Text WCAG AAA ✓ Pass

If you want to check with other color combinations, try the [Color Contrast Checker](#).

Android 4292190861 Background



This preview shows how black text looks on a background with the Android color 4292190861.



This preview shows how white text looks on a background with the Android color 4292190861.

Color Blindness Simulation

Color vision deficiency is a very complex topic, and I could not describe the different causes any better than Wikipedia does, so if you want to learn more, you should check out their [article about color blindness](#).

Dichromacy



Trichromacy



Original Color
4292190861

Protanomaly
4290947472

Deuteranomaly
4291732876

Tritanomaly
4292321183

Monochromacy



Original Color
4292190861

Achromatopsia
4289703855

Achromatomaly
4290620067

CSS Examples

Text

The CSS property to change the color of the text to Android 4292190861 is called "color". The color property can be set on classes, ids or directly on the HTML element.

This example shows how text in the color `rgb(213, 162, 141)` looks like.

```
.text, #text, p{  
    color:rgb(213, 162, 141)  
}
```

If you want to add a text shadow in that color use the text-shadow property, you can generate a text shadow directly with our [CSS Text Shadow Generator](#).

Here you see how black text with a 4 pixel rgb(213, 162, 141) colored shadow looks like.

```
.shadow{ text-shadow: 4px 4px 2px rgb(213, 162, 141) }
```

Border

The CSS property to change the border of an element to Android 4292190861 is called "border". The border property can be set on classes, ids or directly on the HTML element.

This example shows the color as border, it can be applied via the CSS property "border" or "border-color".

```
.border, #border, table{ border:4px solid rgb(213, 162, 141) }
```

If only the border color should be changed use the property `border-color`.

```
.border{ border-color:rgb(213, 162, 141) }
```

If you want to add a box shadow in that color use:

Here you see how a box with a 4 pixel `rgb(213, 162, 141)` colored shadow looks like.

```
.boxshadow{ -moz-box-shadow:4px 4px 4px  
4px rgb(213, 162, 141); -webkit-box-  
shadow:4px 4px 4px 4px rgb(213, 162, 141);  
box-shadow:4px 4px 4px 4px rgb(213, 162,  
141) }
```

Background

The CSS property to change the background color of an element to Android 4292190861 is called "background". The background property can be set on classes, ids or directly on the HTML element.

```
.background, #background, body{  
background: rgb(213, 162, 141) }
```

If only the background color should be changed can be used:

```
.background{ background-color: rgb(213,  
162, 141) }
```

This example shows the color as background, it is applied via the CSS property "background".

To optimize and compress your CSS code, you can use our [online CSS compressor and optimizer](#) based on csstidy. If you want to create a linear or radial gradient as background or border, check our [CSS Gradient Generator](#).

Hey! You found this booklet interesting? Support Converting Colors with the new Membership Option!

The pro membership hides all ads, plus gives you double the colors in the color bucket, and more awesome pro features!

[Learn more, Memberships starting at \\$2.50/m!](#)

**Follow me
on Twitter!**

@ConvertingColor