

# Converting Colors

Android(4292194188)

Have a look what the booklet for  
Android(4292194188) contains.

<b>Android(4292194188)</b> .....	3
<b><i>Conversions</i></b> .....	4
<b><i>Details</i></b> .....	6
<b><i>Harmonies</i></b> .....	11
<b><i>Previews</i></b> .....	23
<b><i>Color Blindness Simulation</i></b> .....	26
<b><i>CSS Examples</i></b> .....	29

# **Color**

**Android(4292194188)**

# Conversions

## Conversions Part 1

Format	Color
Hex	D5AF8C
RGB	213, 175, 140
RGB Percent	84%, 69%, 55%
CMY	0.1647, 0.3137, 0.4510
CMYK	0.00, 0.18, 0.34, 0.16
HSL	29°, 46%, 69%
HSV	29°, 34%, 84%
XYZ	47.5042, 46.6995, 31.3211
YIQ	182.3720, 33.8830, -2.8290

# Conversions

## Conversions Part 2

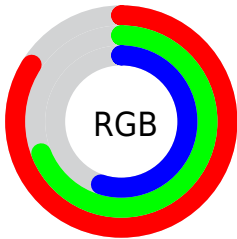
<b>Format</b>	<b>Color</b>
R <sub>Y</sub> B	213, 207, 140
Decimal	14004108
CIE Lab	74.00, 8.88, 23.14
CIE LCh	74, 24.787, 69.013
Yxy	46.6995, 0.3784, 0.3720
Android (android.graphics.Color)	4292194188 (0xFFD5AF8C)
YUV	182.3720, -20.8894, 26.8608
Hunter-Lab	68.3371, 4.4936, 20.6614

# Details

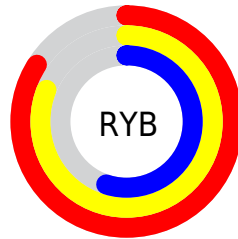
The Android color `4292194188` is a light color, and the websafe version is hex `CC9966`. A complement of this color would be `4287410901`, and the grayscale version is `4290230199`.

A 20% lighter version of the original color is `4294961090`, and `4288510810` is the 20% darker color. If you saturate the color by 10%, you get `4292191351`, and if you desaturate by 10%, it is `4292197025`.

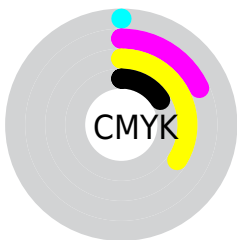
# Distribution



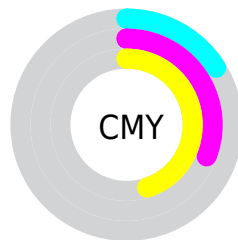
- Red (84%)
- Green (69%)
- Blue (55%)



- Red (84%)
- Yellow (81%)
- Blue (55%)



- Cyan (0%)
- Magenta (18%)
- Yellow (34%)
- Black (16%)



- Cyan (16%)
- Magenta (31%)
- Yellow (45%)

# Brightness & Saturation Gradients

These gradients show how the Android color 4292194188 changes by changing the brightness by 10 percent. The first figure shows a shift by +10% for each color and the second figure -10%.

Similar to the brightness gradients but the following saturation gradients show a change of the Android color 4292194188 by changing the saturation by 10% instead.





4292194188



4292194188

4294967295



4290352242



4294961090



4288510810



4294967262



4286734914



4294967290



4285024811



4283380502



4281802240



4280223488



4278190080



4292194188



4292194188

 4292191351

 4292197025

 4292188513

 4292199863

 4292185676

 4292202700

 4292182839

 4292205537

 4292180002

 4292208375

 4292176908

 4292211455

 4292175360

 4292214271

 4292214783

# Harmonies

## Analogous

The Analogous color harmony consists of three colors that are next to each other on the color wheel.



4293044378



4292194188



4290819977

# Triad

The Triadic color harmony groups three colors that are evenly spaced from another and form a triangle on the color wheel.



4292194188



4286170044



4290948825

# Complementary

The Complementary color scheme is a pair of colors which are on the opposite of each other on the color wheel.



4292194188



4287410901

# Split Complementary

Split-complementary colors differ from the complementary color scheme. The scheme consists of three colors, the original color and two neighbors of the complement color.



4288984802



4292194188



4285907410

# Square

The Square scheme is like the rectangle color scheme, but the four colors are evenly spaced on the color wheel.



4292194188



4287480229



4287020512



4292454599

# Rectangle

The Rectangle color scheme consists of four colors that form a rectangle on the color wheel.



4292194188



4289706894



4287020512



4290359518

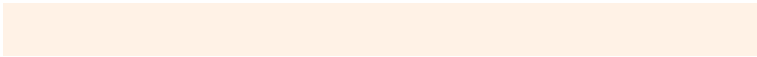


# Sweetspot

The Sweet Spot groups the original color and five complimentary colors.



4292194188



4294963942



4292185267



4286609520



4278190080



4286611584



# Same Dimension

The Same Dimension uses a secret algorithm to generate beautiful new colors.



4292194188



4294953366



4292203404



4285228640



4289417728



4281013504

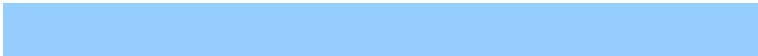


# Inverse Universe

The Inverse Universe completely reimagines the original color for something new.



4287410901



4288073215



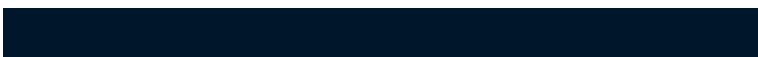
4287401685



4284507755



4278213035



4278196011



# Previews

## White Background



This preview shows how the Android color 4292194188 looks on a white background.

## Color Contrast Check

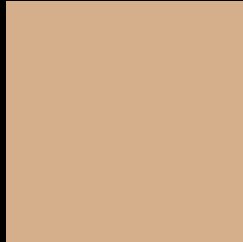
Large Text (above 18pt) WCAG AA × Fail

Any Text WCAG AA × Fail

Large Text (above 18pt) WCAG AAA × Fail

Any Text WCAG AAA × Fail

# Black Background



This preview shows how the Android color 4292194188 looks on a black background.

## Color Contrast Check

Large Text (above 18pt) WCAG AA ✓ Pass

Any Text WCAG AA ✓ Pass

Large Text (above 18pt) WCAG AAA ✓ Pass

Any Text WCAG AAA ✓ Pass

If you want to check with other color combinations, try the [Color Contrast Checker](#).



# Android 4292194188 Background



This preview shows how black text looks on a background with the Android color 4292194188.



This preview shows how white text looks on a background with the Android color 4292194188.

# Color Blindness Simulation

Color vision deficiency is a very complex topic, and I could not describe the different causes any better than Wikipedia does, so if you want to learn more, you should check out their [article about color blindness](#).

## Dichromacy



**Original Color**  
4292194188

**Protanopia**  
4290950799

**Deuteranopia**  
4292259724



# Trichromacy



**Original Color**  
4292194188

**Protanomaly**  
4291408782

**Deuteranomaly**  
4292259724

**Tritanomaly**  
4292389799

# Monochromacy



**Original Color**  
4292194188

**Achromatopsia**  
4290164406

**Achromatomaly**  
4290884519

# CSS Examples

## Text

The CSS property to change the color of the text to Android 4292194188 is called "color". The color property can be set on classes, ids or directly on the HTML element.

This example shows how text in the color `rgb(213, 175, 140)` looks like.

```
.text, #text, p{  
    color:rgb(213, 175, 140)  
}
```

If you want to add a text shadow in that color use the text-shadow property, you can generate a text shadow directly with our [CSS Text Shadow Generator](#).

Here you see how black text with a 4 pixel rgb(213, 175, 140) colored shadow looks like.

```
.shadow{ text-shadow: 4px 4px 2px rgb(213, 175, 140) }
```

## Border

The CSS property to change the border of an element to Android 4292194188 is called "border". The border property can be set on classes, ids or directly on the HTML element.

This example shows the color as border, it can be applied via the CSS property "border" or "border-color".

```
.border, #border, table{ border:4px solid rgb(213, 175, 140) }
```

If only the border color should be changed use the property `border-color`.

```
.border{ border-color:rgb(213, 175, 140) }
```

If you want to add a box shadow in that color use:

Here you see how a box with a 4 pixel `rgb(213, 175, 140)` colored shadow looks like.

```
.boxshadow{ -moz-box-shadow:4px 4px 4px  
4px rgb(213, 175, 140); -webkit-box-  
shadow:4px 4px 4px 4px rgb(213, 175, 140);  
box-shadow:4px 4px 4px 4px rgb(213, 175,  
140) }
```

# Background

The CSS property to change the background color of an element to Android 4292194188 is called "background". The background property can be set on classes, ids or directly on the HTML element.

```
.background, #background, body{  
background: rgb(213, 175, 140) }
```

If only the background color should be changed can be used:

```
.background{ background-color: rgb(213,  
175, 140) }
```

This example shows the color as background, it is applied via the CSS property "background".

To optimize and compress your CSS code, you can use our [online CSS compressor and optimizer](#) based on csstidy. If you want to create a linear or radial gradient as background or border, check our [CSS Gradient Generator](#).



Hey! You found this booklet interesting? Support Converting Colors with the new Membership Option!

The pro membership hides all ads, plus gives you double the colors in the color bucket, and more awesome pro features!

**[Learn more, Memberships starting at \\$2.50/m!](#)**

**Follow me  
on Twitter!**

@ConvertingColor