

# Converting Colors

Android(4292195490)

Have a look what the booklet for  
Android(4292195490) contains.

|  |    |
|--|----|
| <b>Android(4292195490)</b> .....               | 3  |
| <b><i>Conversions</i></b> .....                | 4  |
| <b><i>Details</i></b> .....                    | 6  |
| <b><i>Harmonies</i></b> .....                  | 11 |
| <b><i>Previews</i></b> .....                   | 23 |
| <b><i>Color Blindness Simulation</i></b> ..... | 26 |
| <b><i>CSS Examples</i></b> .....               | 29 |

# **Color**

**Android(4292195490)**

# Conversions

## Conversions Part 1

| Format      | Color                     |
|-------------|---------------------------|
| Hex         | D5B4A2                    |
| RGB         | 213, 180, 162             |
| RGB Percent | 84%, 71%, 64%             |
| CMY         | 0.1647, 0.2941, 0.3647    |
| CMYK        | 0.00, 0.15, 0.24, 0.16    |
| HSL         | 21°, 38%, 74%             |
| HSV         | 21°, 24%, 84%             |
| XYZ         | 50.2834, 49.3973, 41.0668 |
| YIQ         | 187.8150, 25.4460, 1.3980 |

# Conversions

## Conversions Part 2

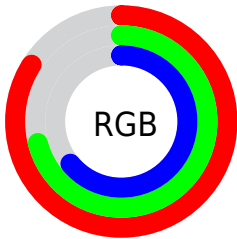
| <b>Format</b>                       | <b>Color</b>                   |
|-------------------------------------|--------------------------------|
| <b>R<sub>YB</sub></b>               | 213, 190, 162                  |
| Decimal                             | 14005410                       |
| CIE Lab                             | 75.70, 9.14, 13.60             |
| CIE LCh                             | 76, 16.384, 56.094             |
| Yxy                                 | 49.3973, 0.3573,<br>0.3510     |
| Android<br>(android.graphics.Color) | 4292195490<br>(0xFFD5B4A2)     |
| YUV                                 | 187.8150, -12.7268,<br>22.0872 |
| Hunter-Lab                          | 70.2832, 4.7104,<br>14.5548    |

# Details

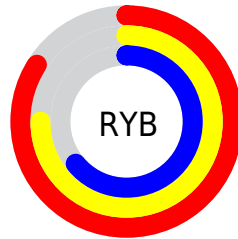
The Android color `4292195490` is a light color, and the websafe version is hex `CC9999`. A complement of this color would be `4288857045`, and the grayscale version is `4290559164`.

A 20% lighter version of the original color is `4294962393`, and `4288577390` is the 20% darker color. If you saturate the color by 10%, you get `4292191885`, and if you desaturate by 10%, it is `4292199095`.

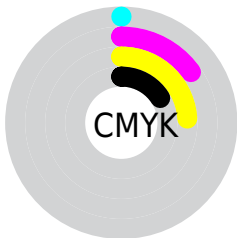
# Distribution



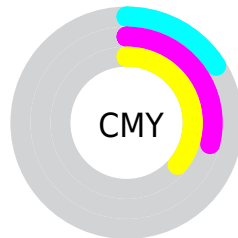
- Red (84%)
- Green (71%)
- Blue (64%)



- Red (84%)
- Yellow (75%)
- Blue (64%)



- Cyan (0%)
- Magenta (15%)
- Yellow (24%)
- Black (16%)



- Cyan (16%)
- Magenta (29%)
- Yellow (36%)

# Brightness & Saturation Gradients

These gradients show how the Android color 4292195490 changes by changing the brightness by 10 percent. The first figure shows a shift by +10% for each color and the second figure -10%.

Similar to the brightness gradients but the following saturation gradients show a change of the Android color 4292195490 by changing the saturation by 10% instead.



 4292195490

 4292195490

4294967295

 4290353544

 4294962393

 4288577390

 4294967285

 4286801494

 4285091391

 4283447081

 4281934356

 4280487168

 4278190080

 4292195490

 4292195490

 4292191885

 4292199095

 4292188279

 4292202701

 4292184930

 4292206050

 4292181325

 4292209655

 4292177720

 4292213247

 4292174114

 4292214783

 4292170765

 4292168448

# Harmonies

## Analogous

The Analogous color harmony consists of three colors that are next to each other on the color wheel.



4292587950



4292195490



4291410333

# Triad

The Triadic color harmony groups three colors that are evenly spaced from another and form a triangle on the color wheel.



4292195490



4288267192



4290492374

# Complementary

The Complementary color scheme is a pair of colors which are on the opposite of each other on the color wheel.



4292195490



4288857045

# Split Complementary

Split-complementary colors differ from the complementary color scheme. The scheme consists of three colors, the original color and two neighbors of the complement color.



4289248472



4292195490



4287873991

# Square

The Square scheme is like the rectangle color scheme, but the four colors are evenly spaced on the color wheel.



4292195490



4289184169



4288201171



4291670988

# Rectangle

The Rectangle color scheme consists of four colors that form a rectangle on the color wheel.



4292195490



4290690205



4288201171



4290034135



# Sweetspot

The Sweet Spot groups the original color and five complimentary colors.



4292195490



4294964205



4292190915



4286609781



4278190080



4286611584



# Same Dimension

The Same Dimension uses a secret algorithm to generate beautiful new colors.



4292195490



4294954933



4292201890



4285228128



4289412096



4281011968



# Inverse Universe

The Inverse Universe completely reimagines the original color for something new.



4288857045



4290110975



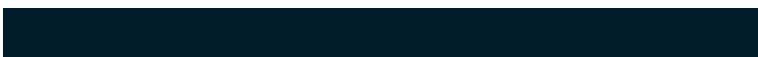
4288850645



4284508011



4278218667



4278197291



# Previews

## White Background



This preview shows how the Android color 4292195490 looks on a white background.

## Color Contrast Check

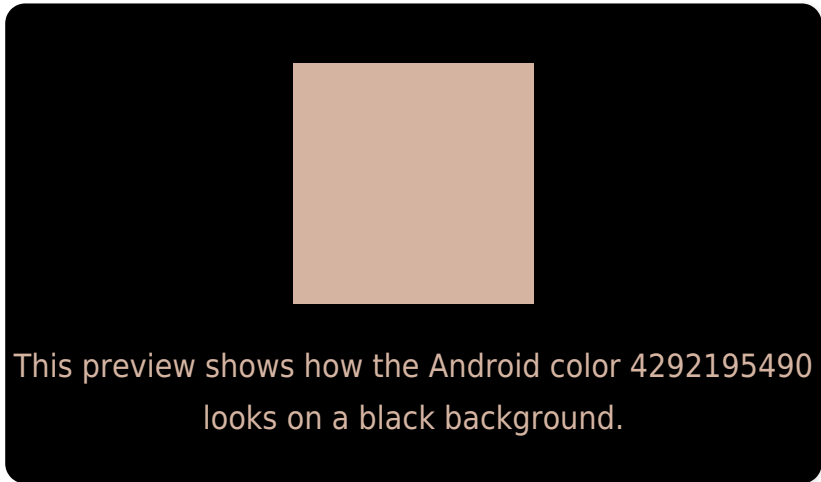
Large Text (above 18pt) WCAG AA × Fail

Any Text WCAG AA × Fail

Large Text (above 18pt) WCAG AAA × Fail

Any Text WCAG AAA × Fail

# Black Background



## Color Contrast Check

Large Text (above 18pt) WCAG AA ✓ Pass

Any Text WCAG AA ✓ Pass

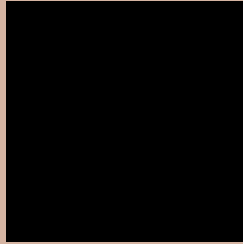
Large Text (above 18pt) WCAG AAA ✓ Pass

Any Text WCAG AAA ✓ Pass

If you want to check with other color combinations, try the [Color Contrast Checker](#).



# Android 4292195490 Background



This preview shows how black text looks on a background with the Android color 4292195490.



This preview shows how white text looks on a background with the Android color 4292195490.

# Color Blindness Simulation

Color vision deficiency is a very complex topic, and I could not describe the different causes any better than Wikipedia does, so if you want to learn more, you should check out their [article about color blindness](#).


## Dichromacy



**Original Color**  
4292195490

**Protanopia**  
4291017381

**Deuteranopia**  
4292261026



**Tritanopia**  
4292391102

# Trichromacy



**Original Color**  
4292195490

**Protanomaly**  
4291475620

**Deuteranomaly**  
4292261026

**Tritanomaly**  
4292325812

# Monochromacy



**Original Color**  
4292195490

**Achromatopsia**  
4290559164

**Achromatomaly**  
4291148211

# CSS Examples

## Text

The CSS property to change the color of the text to Android 4292195490 is called "color". The color property can be set on classes, ids or directly on the HTML element.

This example shows how text in the color `rgb(213, 180, 162)` looks like.

```
.text, #text, p{  
    color:rgb(213, 180, 162)  
}
```

If you want to add a text shadow in that color use the text-shadow property, you can generate a text shadow directly with our [CSS Text Shadow Generator](#).

Here you see how black text with a 4 pixel rgb(213, 180, 162) colored shadow looks like.

```
.shadow{ text-shadow: 4px 4px 2px rgb(213, 180, 162) }
```

## Border

The CSS property to change the border of an element to Android 4292195490 is called "border". The border property can be set on classes, ids or directly on the HTML element.

This example shows the color as border, it can be applied via the CSS property "border" or "border-color".

```
.border, #border, table{ border:4px solid rgb(213, 180, 162) }
```

If only the border color should be changed use the property `border-color`.

```
.border{ border-color:rgb(213, 180, 162) }
```

If you want to add a box shadow in that color use:

Here you see how a box with a 4 pixel `rgb(213, 180, 162)` colored shadow looks like.

```
.boxshadow{ -moz-box-shadow:4px 4px 4px  
4px rgb(213, 180, 162); -webkit-box-  
shadow:4px 4px 4px 4px rgb(213, 180, 162);  
box-shadow:4px 4px 4px 4px rgb(213, 180,  
162) }
```

# Background

The CSS property to change the background color of an element to Android 4292195490 is called "background". The background property can be set on classes, ids or directly on the HTML element.

```
.background, #background, body{  
background: rgb(213, 180, 162) }
```

If only the background color should be changed can be used:

```
.background{ background-color: rgb(213,  
180, 162) }
```

This example shows the color as background, it is applied via the CSS property "background".

To optimize and compress your CSS code, you can use our [online CSS compressor and optimizer](#) based on csstidy. If you want to create a linear or radial gradient as background or border, check our [CSS Gradient Generator](#).



Hey! You found this booklet interesting? Support Converting Colors with the new Membership Option!

The pro membership hides all ads, plus gives you double the colors in the color bucket, and more awesome pro features!

**[Learn more, Memberships starting at \\$2.50/m!](#)**

**Follow me  
on Twitter!**

@ConvertingColor