

# Converting Colors

Android(4292196280)

Have a look what the booklet for  
Android(4292196280) contains.

<b>Android(4292196280)</b> .....	3
<b><i>Conversions</i></b> .....	4
<b><i>Details</i></b> .....	6
<b><i>Harmonies</i></b> .....	11
<b><i>Previews</i></b> .....	23
<b><i>Color Blindness Simulation</i></b> .....	26
<b><i>CSS Examples</i></b> .....	29

# **Color**

**Android(4292196280)**

# Conversions

## Conversions Part 1

Format	Color
Hex	D5B7B8
RGB	213, 183, 184
RGB Percent	84%, 72%, 72%
CMY	0.1647, 0.2824, 0.2784
CMYK	0.00, 0.14, 0.14, 0.16
HSL	358°, 26%, 78%
HSV	358°, 14%, 84%
XYZ	53.0258, 51.4738, 52.4881
YIQ	192.0840, 17.5590, 6.6710

# Conversions

## Conversions Part 2

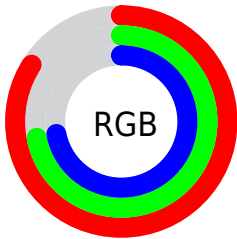
Format	Color
R <sub>Y</sub> B	213, 183, 184
Decimal	14006200
CIE Lab	76.97, 10.90, 3.47
CIE LCh	77, 11.437, 17.644
Yxy	51.4738, 0.3378, 0.3279
Android (android.graphics.Color)	4292196280 (0xFFD5B7B8)
YUV	192.0840, -3.9854, 18.3433
Hunter-Lab	71.7452, 6.3724, 6.8457

# Details

The Android color `4292196280` is a light color, and the websafe version is hex `FFCCCC`. A complement of this color would be `4290237908`, and the grayscale version is `4290822336`.

A 20% lighter version of the original color is `4294963184`, and `4288578179` is the 20% darker color. If you saturate the color by 10%, you get `4292190883`, and if you desaturate by 10%, it is `4292201677`.

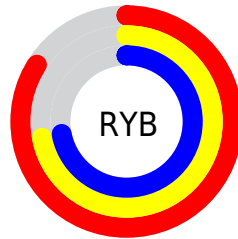
# Distribution



Red (84%)

Green (72%)

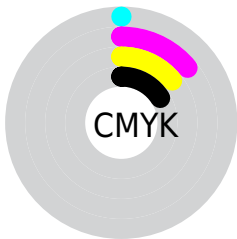
Blue (72%)



Red (84%)

Yellow (72%)

Blue (72%)

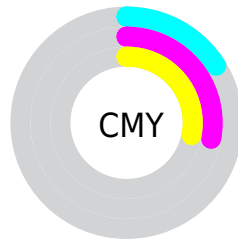


Cyan (0%)

Magenta (14%)

Yellow (14%)

Black (16%)



Cyan (16%)

Magenta (28%)

Yellow (28%)

# Brightness & Saturation Gradients

These gradients show how the Android color 4292196280 changes by changing the brightness by 10 percent. The first figure shows a shift by +10% for each color and the second figure -10%.

Similar to the brightness gradients but the following saturation gradients show a change of the Android color 4292196280 by changing the saturation by 10% instead.



 4292196280

 4292196280

4294967295

 4290354333

 4294963184

 4288578179

 4286867818

 4285157714

 4283578939

 4282000421

 4280553232

 4278190080

 4292196280

 4292196280

 4292190883

 4292201677

 4292185231

 4292207329

 4292179834

 4292212726

 4292174438

 4292214783

 4292169041

 4292163388

 4292157992

 4292152595

 4292149255

# Harmonies

## Analogous

The Analogous color harmony consists of three colors that are next to each other on the color wheel.



4291934147



4292196280



4292065711

# Triad

The Triadic color harmony groups three colors that are evenly spaced from another and form a triangle on the color wheel.



4292196280



4290036400



4289642706

# Complementary

The Complementary color scheme is a pair of colors which are on the opposite of each other on the color wheel.



4292196280



4290237908

# Split Complementary

Split-complementary colors differ from the complementary color scheme. The scheme consists of three colors, the original color and two neighbors of the complement color.



4289053645



4292196280



4289316025

# Square

The Square scheme is like the rectangle color scheme, but the four colors are evenly spaced on the color wheel.



4292196280



4290822058



4288988356



4290493906

# Rectangle

The Rectangle color scheme consists of four colors that form a rectangle on the color wheel.



4292196280



4291738539



4288988356



4289446353

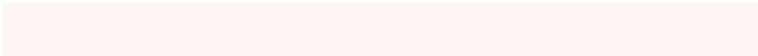


# Sweetspot

The Sweet Spot groups the original color and five complimentary colors.



4292196280



4294964725



4292130773



4286609785



4278190080



4286611584



# Same Dimension

The Same Dimension uses a secret algorithm to generate beautiful new colors.



4292196280



4294956245



4292199863



4285227105



4289396742



4281008129



# Inverse Universe

The Inverse Universe completely reimagines the original color for something new.



4292196280



4294956245



4290234325



4285227105



4289396742

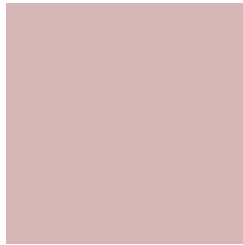


4281008129



# Previews

## White Background



This preview shows how the Android color 4292196280 looks on a white background.

## Color Contrast Check

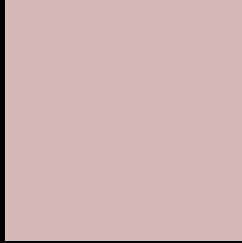
Large Text (above 18pt) WCAG AA × Fail

Any Text WCAG AA × Fail

Large Text (above 18pt) WCAG AAA × Fail

Any Text WCAG AAA × Fail

# Black Background



This preview shows how the Android color 4292196280 looks on a black background.

## Color Contrast Check

Large Text (above 18pt) WCAG AA ✓ Pass

Any Text WCAG AA ✓ Pass

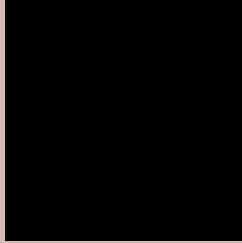
Large Text (above 18pt) WCAG AAA ✓ Pass

Any Text WCAG AAA ✓ Pass

If you want to check with other color combinations, try the [Color Contrast Checker](#).



# Android 4292196280 Background



This preview shows how black text looks on a background with the Android color 4292196280.



This preview shows how white text looks on a background with the Android color 4292196280.

# Color Blindness Simulation

Color vision deficiency is a very complex topic, and I could not describe the different causes any better than Wikipedia does, so if you want to learn more, you should check out their [article about color blindness](#).

## Dichromacy



**Original Color**  
4292196280

**Protanopia**  
4290952636

**Deuteranopia**  
4292065464



**Tritanopia**  
4292261315

# Trichromacy



**Original Color**  
4292196280

**Protanomaly**  
4291410875

**Deuteranomaly**  
4292131000

**Tritanomaly**  
4292261567

# Monochromacy



**Original Color**  
4292196280

**Achromatopsia**  
4290822336

**Achromatomaly**  
4291345853

# CSS Examples

## Text

The CSS property to change the color of the text to Android 4292196280 is called "color". The color property can be set on classes, ids or directly on the HTML element.

This example shows how text in the color `rgb(213, 183, 184)` looks like.

```
.text, #text, p{  
    color:rgb(213, 183, 184)  
}
```

If you want to add a text shadow in that color use the text-shadow property, you can generate a text shadow directly with our [CSS Text Shadow Generator](#).

Here you see how black text with a 4 pixel rgb(213, 183, 184) colored shadow looks like.

```
.shadow{ text-shadow: 4px 4px 2px rgb(213, 183, 184) }
```

## Border

The CSS property to change the border of an element to Android 4292196280 is called "border". The border property can be set on classes, ids or directly on the HTML element.

This example shows the color as border, it can be applied via the CSS property "border" or "border-color".

```
.border, #border, table{ border:4px solid rgb(213, 183, 184) }
```

If only the border color should be changed use the property `border-color`.

```
.border{ border-color:rgb(213, 183, 184) }
```

If you want to add a box shadow in that color use:

Here you see how a box with a 4 pixel `rgb(213, 183, 184)` colored shadow looks like.

```
.boxshadow{ -moz-box-shadow:4px 4px 4px  
4px rgb(213, 183, 184); -webkit-box-  
shadow:4px 4px 4px 4px rgb(213, 183, 184);  
box-shadow:4px 4px 4px 4px rgb(213, 183,  
184) }
```

# Background

The CSS property to change the background color of an element to Android 4292196280 is called "background". The background property can be set on classes, ids or directly on the HTML element.

```
.background, #background, body{  
background: rgb(213, 183, 184) }
```

If only the background color should be changed can be used:

```
.background{ background-color: rgb(213,  
183, 184) }
```

This example shows the color as background, it is applied via the CSS property "background".

To optimize and compress your CSS code, you can use our [online CSS compressor and optimizer](#) based on csstidy. If you want to create a linear or radial gradient as background or border, check our [CSS Gradient Generator](#).



Hey! You found this booklet interesting? Support Converting Colors with the new Membership Option!

The pro membership hides all ads, plus gives you double the colors in the color bucket, and more awesome pro features!

**[Learn more, Memberships starting at \\$2.50/m!](#)**

**Follow me  
on Twitter!**

@ConvertingColor