

Converting Colors

Android(4292196784)

Have a look what the booklet for
Android(4292196784) contains.

Android(4292196784)	3
<i>Conversions</i>	4
<i>Details</i>	6
<i>Harmonies</i>	11
<i>Previews</i>	23
<i>Color Blindness Simulation</i>	26
<i>CSS Examples</i>	29

Color

Android(4292196784)

Conversions

Conversions Part 1

Format	Color
Hex	D5B9B0
RGB	213, 185, 176
RGB Percent	84%, 73%, 69%
CMY	0.1647, 0.2745, 0.3098
CMYK	0.00, 0.13, 0.17, 0.16
HSL	15°, 31%, 76%
HSV	15°, 17%, 84%
XYZ	52.6260, 51.9786, 48.3335
YIQ	192.3460, 19.5770, 3.1370

Conversions

Conversions Part 2

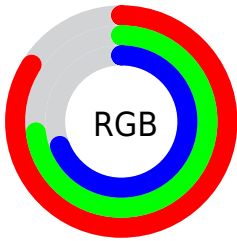
Format	Color
R _Y B	213, 188, 176
Decimal	14006704
CIE Lab	77.27, 8.56, 8.24
CIE LCh	77, 11.879, 43.925
Yxy	51.9786, 0.3441, 0.3399
Android (android.graphics.Color)	4292196784 (0xFFD5B9B0)
YUV	192.3460, -8.0586, 18.1136
Hunter-Lab	72.0962, 4.1261, 10.7192

Details

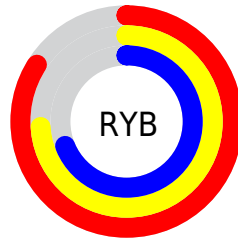
The Android color `4292196784` is a light color, and the websafe version is hex `CCCCCC`. A complement of this color would be `4289776853`, and the grayscale version is `4290822336`.

A 20% lighter version of the original color is `4294963688`, and `4288578684` is the 20% darker color. If you saturate the color by 10%, you get `4292192667`, and if you desaturate by 10%, it is `4292200901`.

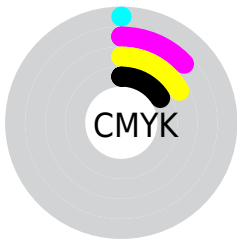
Distribution



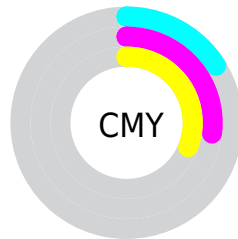
- Red (84%)
- Green (73%)
- Blue (69%)



- Red (84%)
- Yellow (74%)
- Blue (69%)



- Cyan (0%)
- Magenta (13%)
- Yellow (17%)
- Black (16%)



- Cyan (16%)
- Magenta (27%)
- Yellow (31%)

Brightness & Saturation Gradients

These gradients show how the Android color 4292196784 changes by changing the brightness by 10 percent. The first figure shows a shift by +10% for each color and the second figure -10%.

Similar to the brightness gradients but the following saturation gradients show a change of the Android color 4292196784 by changing the saturation by 10% instead.

 4292196784

 4292196784

4294967295

 4290354837

 4294963688

 4288578684

 4286868323

 4285157963

 4283513652

 4282000927

 4280553735

 4278190080

 4292196784

 4292196784

 4292192667

 4292200901

 4292188549

 4292205019

 4292184432

 4292209136

 4292180315

 4292213247

 4292175942

 4292214783

 4292171824

 4292167707

 4292163590

 4292162560

Harmonies

Analogous

The Analogous color harmony consists of three colors that are next to each other on the color wheel.



4292327354



4292196784



4291738794

Triad

The Triadic color harmony groups three colors that are evenly spaced from another and form a triangle on the color wheel.



4292196784



4289381816



4290428628

Complementary

The Complementary color scheme is a pair of colors which are on the opposite of each other on the color wheel.



4292196784



4289776853

Split Complementary

Split-complementary colors differ from the complementary color scheme. The scheme consists of three colors, the original color and two neighbors of the complement color.



4289577684



4292196784



4288988612

Square

The Square scheme is like the rectangle color scheme, but the four colors are evenly spaced on the color wheel.



4292196784



4290167727



4289053902



4291279567

Rectangle

The Rectangle color scheme consists of four colors that form a rectangle on the color wheel.



4292196784



4291280553



4289053902



4290101205

Sweetspot

The Sweet Spot groups the original color and five complimentary colors.



4292196784



4294964722



4292194508



4286610040



4278190080



4286611584

Same Dimension

The Same Dimension uses a secret algorithm to generate beautiful new colors.



4292196784



4294956745



4292201392



4285227872



4289407488



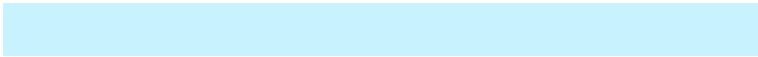
4281010944

Inverse Universe

The Inverse Universe completely reimagines the original color for something new.



4289776853



4291425023



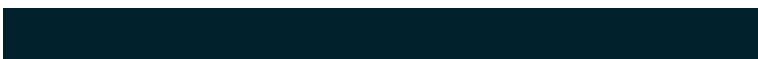
4289772245



4284508267



4278223275



4278198571

Previews

White Background



This preview shows how the Android color 4292196784 looks on a white background.

Color Contrast Check

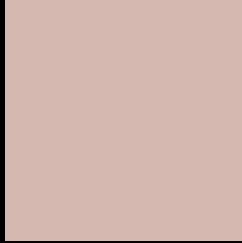
Large Text (above 18pt) WCAG AA × Fail

Any Text WCAG AA × Fail

Large Text (above 18pt) WCAG AAA × Fail

Any Text WCAG AAA × Fail

Black Background



This preview shows how the Android color 4292196784 looks on a black background.

Color Contrast Check

Large Text (above 18pt) WCAG AA ✓ Pass

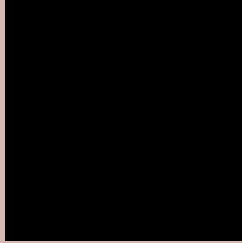
Any Text WCAG AA ✓ Pass

Large Text (above 18pt) WCAG AAA ✓ Pass

Any Text WCAG AAA ✓ Pass

If you want to check with other color combinations, try the [Color Contrast Checker](#).

Android 4292196784 Background



This preview shows how black text looks on a background with the Android color 4292196784.



This preview shows how white text looks on a background with the Android color 4292196784.

Color Blindness Simulation

Color vision deficiency is a very complex topic, and I could not describe the different causes any better than Wikipedia does, so if you want to learn more, you should check out their [article about color blindness](#).


Dichromacy



Original Color
4292196784

Protanopia
4291149491

Deuteranopia
4292327600



Tritanopia
4292392644

Trichromacy



Original Color
4292196784

Protanomaly
4291542194

Deuteranomaly
4292262064

Tritanomaly
4292327357

Monochromacy



Original Color
4292196784

Achromatopsia
4290822336

Achromatomaly
4291345850

CSS Examples

Text

The CSS property to change the color of the text to Android 4292196784 is called "color". The color property can be set on classes, ids or directly on the HTML element.

This example shows how text in the color `rgb(213, 185, 176)` looks like.

```
.text, #text, p{  
    color:rgb(213, 185, 176)  
}
```

If you want to add a text shadow in that color use the text-shadow property, you can generate a text shadow directly with our [CSS Text Shadow Generator](#).

Here you see how black text with a 4 pixel rgb(213, 185, 176) colored shadow looks like.

```
.shadow{ text-shadow: 4px 4px 2px rgb(213, 185, 176) }
```

Border

The CSS property to change the border of an element to Android 4292196784 is called "border". The border property can be set on classes, ids or directly on the HTML element.

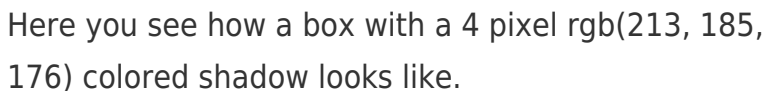
This example shows the color as border, it can be applied via the CSS property "border" or "border-color".

```
.border, #border, table{ border:4px solid rgb(213, 185, 176) }
```

If only the border color should be changed use the property `border-color`.

```
.border{ border-color:rgb(213, 185, 176) }
```

If you want to add a box shadow in that color use:



Here you see how a box with a 4 pixel `rgb(213, 185, 176)` colored shadow looks like.

```
.boxshadow{ -moz-box-shadow:4px 4px 4px  
4px rgb(213, 185, 176); -webkit-box-  
shadow:4px 4px 4px 4px rgb(213, 185, 176);  
box-shadow:4px 4px 4px 4px rgb(213, 185,  
176) }
```

Background

The CSS property to change the background color of an element to Android 4292196784 is called "background". The background property can be set on classes, ids or directly on the HTML element.

```
.background, #background, body{  
background: rgb(213, 185, 176) }
```

If only the background color should be changed can be used:

```
.background{ background-color: rgb(213,  
185, 176) }
```

This example shows the color as background, it is applied via the CSS property "background".

To optimize and compress your CSS code, you can use our [online CSS compressor and optimizer](#) based on csstidy. If you want to create a linear or radial gradient as background or border, check our [CSS Gradient Generator](#).

Hey! You found this booklet interesting? Support Converting Colors with the new Membership Option!

The pro membership hides all ads, plus gives you double the colors in the color bucket, and more awesome pro features!

[Learn more, Memberships starting at \\$2.50/m!](#)

**Follow me
on Twitter!**

@ConvertingColor