

Converting Colors

Android(4292197306)

Have a look what the booklet for
Android(4292197306) contains.

Android(4292197306)	3
<i>Conversions</i>	4
<i>Details</i>	6
<i>Harmonies</i>	11
<i>Previews</i>	23
<i>Color Blindness Simulation</i>	26
<i>CSS Examples</i>	29

Color

Android(4292197306)

Conversions

Conversions Part 1

Format	Color
Hex	D5BBBA
RGB	213, 187, 186
RGB Percent	84%, 73%, 73%
CMY	0.1647, 0.2667, 0.2706
CMYK	0.00, 0.12, 0.13, 0.16
HSL	2°, 24%, 78%
HSV	2°, 13%, 84%
XYZ	54.0738, 53.2320, 53.8792
YIQ	194.6600, 15.8170, 5.2010

Conversions

Conversions Part 2

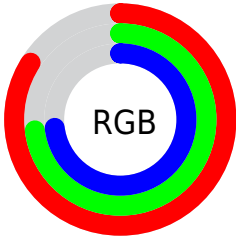
Format	Color
R_{YB}	213, 187, 186
Decimal	14007226
CIE Lab	78.01, 9.08, 3.90
CIE LCh	78, 9.882, 23.228
Yxy	53.2320, 0.3355, 0.3303
Android (android.graphics.Color)	4292197306 (0xFFD5BBBA)
YUV	194.6600, -4.2694, 16.0842
Hunter-Lab	72.9602, 4.6133, 7.2881

Details

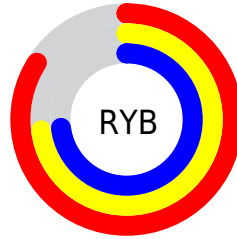
The Android color `4292197306` is a light color, and the websafe version is hex `CCCCCC`. A complement of this color would be `4290434261`, and the grayscale version is `4291019715`.

A 20% lighter version of the original color is `4294964210`, and `4288579205` is the 20% darker color. If you saturate the color by 10%, you get `4292191909`, and if you desaturate by 10%, it is `4292202703`.

Distribution



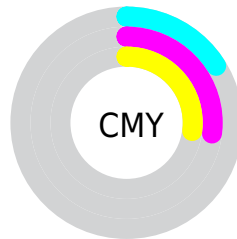
- Red (84%)
- Green (73%)
- Blue (73%)



- Red (84%)
- Yellow (73%)
- Blue (73%)



- Cyan (0%)
- Magenta (12%)
- Yellow (13%)
- Black (16%)



- Cyan (16%)
- Magenta (27%)
- Yellow (27%)

Brightness & Saturation Gradients

These gradients show how the Android color 4292197306 changes by changing the brightness by 10 percent. The first figure shows a shift by +10% for each color and the second figure -10%.

Similar to the brightness gradients but the following saturation gradients show a change of the Android color 4292197306 by changing the saturation by 10% instead.

 4292197306

 4292197306

4294967295

 4290355359

 4294964210

 4288579205

 4286868844

 4285158484

 4283579708

 4282066727

 4280619794

 4278255616

 4278190080

 4292197306

 4292197306

 4292191909

 4292202703

 4292186767

 4292207845

 4292181370

 4292213242

 4292176229

 4292214783

 4292170831

 4292165690

 4292160293

 4292155152

 4292151296

Harmonies

Analogous

The Analogous color harmony consists of three colors that are next to each other on the color wheel.



4292066243



4292197306



4292001203

Triad

The Triadic color harmony groups three colors that are evenly spaced from another and form a triangle on the color wheel.



4292197306



4290168246



4290101971

Complementary

The Complementary color scheme is a pair of colors which are on the opposite of each other on the color wheel.



4292197306



4290434261

Split Complementary

Split-complementary colors differ from the complementary color scheme. The scheme consists of three colors, the original color and two neighbors of the complement color.



4289578447



4292197306



4289644222

Square

The Square scheme is like the rectangle color scheme, but the four colors are evenly spaced on the color wheel.



4292197306



4290888368



4289382088



4290822098

Rectangle

The Rectangle color scheme consists of four colors that form a rectangle on the color wheel.



4292197306



4291739568



4289382088



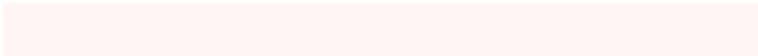
4289905618

Sweetspot

The Sweet Spot groups the original color and five complimentary colors.



4292197306



4294964725



4292197076



4286609785



4278190080



4286611584

Same Dimension

The Same Dimension uses a secret algorithm to generate beautiful new colors.



4292197306



4294957785



4292200634



4285227360



4289398272



4281008640

Inverse Universe

The Inverse Universe completely reimagines the original color for something new.



4290434261



4292476671



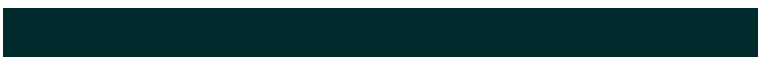
4290430933



4284509035



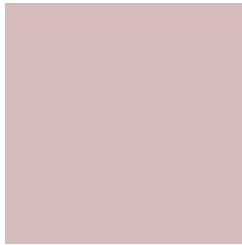
4278232491



4278200875

Previews

White Background



This preview shows how the Android color 4292197306 looks on a white background.

Color Contrast Check

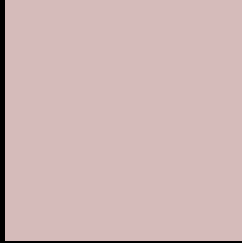
Large Text (above 18pt) WCAG AA × Fail

Any Text WCAG AA × Fail

Large Text (above 18pt) WCAG AAA × Fail

Any Text WCAG AAA × Fail

Black Background



This preview shows how the Android color 4292197306 looks on a black background.

Color Contrast Check

Large Text (above 18pt) WCAG AA ✓ Pass

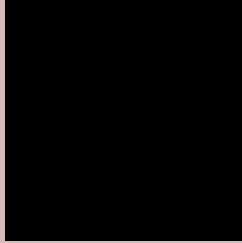
Any Text WCAG AA ✓ Pass

Large Text (above 18pt) WCAG AAA ✓ Pass

Any Text WCAG AAA ✓ Pass

If you want to check with other color combinations, try the [Color Contrast Checker](#).

Android 4292197306 Background



This preview shows how black text looks on a background with the Android color 4292197306.



This preview shows how white text looks on a background with the Android color 4292197306.

Color Blindness Simulation

Color vision deficiency is a very complex topic, and I could not describe the different causes any better than Wikipedia does, so if you want to learn more, you should check out their [article about color blindness](#).


Dichromacy



Original Color
4292197306

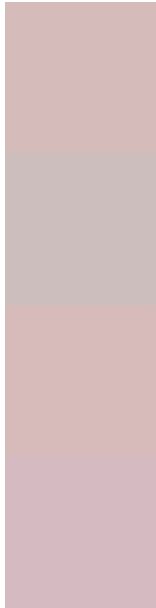
Protanopia
4291150013

Deuteranopia
4292262842



Tritanopia
4292327879

Trichromacy



Original Color
4292197306

Protanomaly
4291542716

Deuteranomaly
4292262842

Tritanomaly
4292262594

Monochromacy



Original Color
4292197306

Achromatopsia
4291019715

Achromatomaly
4291477696

CSS Examples

Text

The CSS property to change the color of the text to Android 4292197306 is called "color". The color property can be set on classes, ids or directly on the HTML element.

This example shows how text in the color `rgb(213, 187, 186)` looks like.

```
.text, #text, p{  
    color:rgb(213, 187, 186)  
}
```

If you want to add a text shadow in that color use the text-shadow property, you can generate a text shadow directly with our [CSS Text Shadow Generator](#).

Here you see how black text with a 4 pixel rgb(213, 187, 186) colored shadow looks like.

```
.shadow{ text-shadow: 4px 4px 2px rgb(213, 187, 186) }
```

Border

The CSS property to change the border of an element to Android 4292197306 is called "border". The border property can be set on classes, ids or directly on the HTML element.

This example shows the color as border, it can be applied via the CSS property "border" or "border-color".

```
.border, #border, table{ border:4px solid rgb(213, 187, 186) }
```

If only the border color should be changed use the property `border-color`.

```
.border{ border-color:rgb(213, 187, 186) }
```

If you want to add a box shadow in that color use:

Here you see how a box with a 4 pixel `rgb(213, 187, 186)` colored shadow looks like.

```
.boxshadow{ -moz-box-shadow:4px 4px 4px 4px rgb(213, 187, 186); -webkit-box-shadow:4px 4px 4px 4px rgb(213, 187, 186); box-shadow:4px 4px 4px 4px rgb(213, 187, 186) }
```

Background

The CSS property to change the background color of an element to Android 4292197306 is called "background". The background property can be set on classes, ids or directly on the HTML element.

```
.background, #background, body{  
background: rgb(213, 187, 186) }
```

If only the background color should be changed can be used:

```
.background{ background-color: rgb(213,  
187, 186) }
```

This example shows the color as background, it is applied via the CSS property "background".

To optimize and compress your CSS code, you can use our [online CSS compressor and optimizer](#) based on csstidy. If you want to create a linear or radial gradient as background or border, check our [CSS Gradient Generator](#).

Hey! You found this booklet interesting? Support Converting Colors with the new Membership Option!

The pro membership hides all ads, plus gives you double the colors in the color bucket, and more awesome pro features!

[Learn more, Memberships starting at \\$2.50/m!](#)

**Follow me
on Twitter!**

@ConvertingColor