

Converting Colors

Android(4292198839)

Have a look what the booklet for
Android(4292198839) contains.

Android(4292198839)	3
<i>Conversions</i>	4
<i>Details</i>	6
<i>Harmonies</i>	11
<i>Previews</i>	23
<i>Color Blindness Simulation</i>	26
<i>CSS Examples</i>	29

Color

Android(4292198839)

Conversions

Conversions Part 1

Format	Color
Hex	D5C1B7
RGB	213, 193, 183
RGB Percent	84%, 76%, 72%
CMY	0.1647, 0.2431, 0.2824
CMYK	0.00, 0.09, 0.14, 0.16
HSL	20°, 26%, 78%
HSV	20°, 14%, 84%
XYZ	55.0578, 55.7050, 52.6500
YIQ	197.8400, 15.1300, 1.1300

Conversions

Conversions Part 2

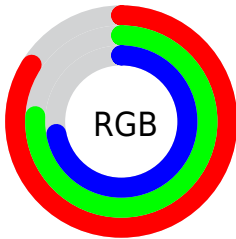
Format	Color
RYB	213, 198, 183
Decimal	14008759
CIELab	79.45, 5.40, 7.58
CIELCh	79, 9.308, 54.547
Yxy	55.7050, 0.3369, 0.3409
Android (android.graphics.Color)	4292198839 (0xFFD5C1B7)
YUV	197.8400, -7.3161, 13.2953
Hunter-Lab	74.6358, 1.0644, 10.4203

Details

The Android color `4292198839` is a light color, and the websafe version is hex `CCCCCC`. A complement of this color would be `4290235349`, and the grayscale version is `4291217094`.

A 20% lighter version of the original color is `4294965743`, and `4288580738` is the 20% darker color. If you saturate the color by 10%, you get `4292195234`, and if you desaturate by 10%, it is `4292202444`.

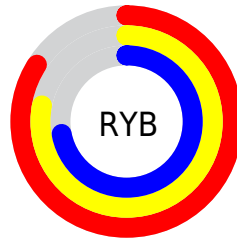
Distribution



Red (84%)

Green (76%)

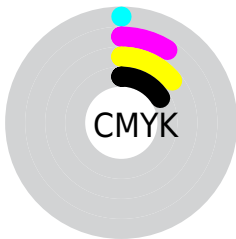
Blue (72%)



Red (84%)

Yellow (78%)

Blue (72%)

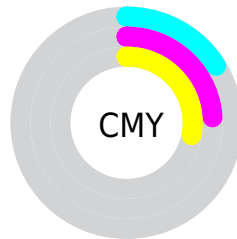


Cyan (0%)

Magenta (9%)

Yellow (14%)

Black (16%)



Cyan (16%)

Magenta (24%)

Yellow (28%)

Brightness & Saturation Gradients

These gradients show how the Android color 4292198839 changes by changing the brightness by 10 percent. The first figure shows a shift by +10% for each color and the second figure -10%.

Similar to the brightness gradients but the following saturation gradients show a change of the Android color 4292198839 by changing the saturation by 10% instead.

 4292198839

 4292198839

4294967295

 4290356892

 4294965743

 4288580738

 4286870121

 4285160017

 4283580986

 4282068004

 4280620815

 4278714368

 4278190080

 4292198839

 4292198839

 4292195234

 4292202444

 4292191628

 4292206050

 4292187767

 4292209911

 4292184162

 4292213503

 4292180557

 4292214783

 4292176951

 4292173346

 4292169485

 4292167424

Harmonies

Analogous

The Analogous color harmony consists of three colors that are next to each other on the color wheel.



[4292394942](#)



[4292198839](#)



[4291740852](#)

Triad

The Triadic color harmony groups three colors that are evenly spaced from another and form a triangle on the color wheel.



4292198839



4289972931



4291150805

Complementary

The Complementary color scheme is a pair of colors which are on the opposite of each other on the color wheel.



4292198839



4290235349

Split Complementary

Split-complementary colors differ from the complementary color scheme. The scheme consists of three colors, the original color and two neighbors of the complement color.



4290430678



4292198839



4289776332

Square

The Square scheme is like the rectangle color scheme, but the four colors are evenly spaced on the color wheel.



4292198839



4290431419



4289906899



4291805647

Rectangle

The Rectangle color scheme consists of four colors that form a rectangle on the color wheel.



4292198839



4291348148



4289906899



4290888917

Sweetspot

The Sweet Spot groups the original color and five complimentary colors.



4292198839



4294965493



4292196299



4286610297



4278190080



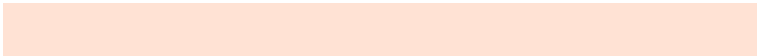
4286611584

Same Dimension

The Same Dimension uses a secret algorithm to generate beautiful new colors.



4292198839



4294959828



4292202679



4285228128



4289411328



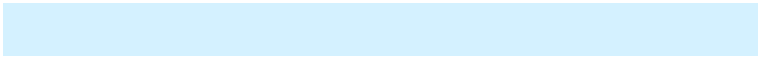
4281011712

Inverse Universe

The Inverse Universe completely reimagines the original color for something new.



4290235349



4292145663



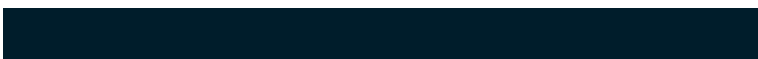
4290231765



4284508267



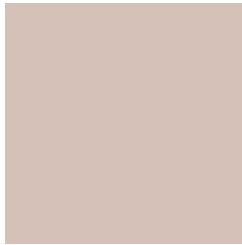
4278219435



4278197547

Previews

White Background



This preview shows how the Android color 4292198839 looks on a white background.

Color Contrast Check

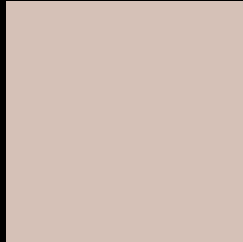
Large Text (above 18pt) WCAG AA × Fail

Any Text WCAG AA × Fail

Large Text (above 18pt) WCAG AAA × Fail

Any Text WCAG AAA × Fail

Black Background



This preview shows how the Android color 4292198839 looks on a black background.

Color Contrast Check

Large Text (above 18pt) WCAG AA ✓ Pass

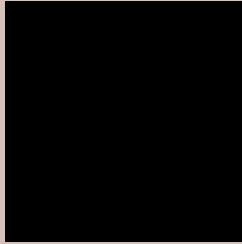
Any Text WCAG AA ✓ Pass

Large Text (above 18pt) WCAG AAA ✓ Pass

Any Text WCAG AAA ✓ Pass

If you want to check with other color combinations, try the [Color Contrast Checker](#).

Android 4292198839 Background



This preview shows how black text looks on a background with the Android color 4292198839.



This preview shows how white text looks on a background with the Android color 4292198839.

Color Blindness Simulation

Color vision deficiency is a very complex topic, and I could not describe the different causes any better than Wikipedia does, so if you want to learn more, you should check out their [article about color blindness](#).


Dichromacy



Original Color
4292198839

Protanopia
4291544249

Deuteranopia
4292722360



Tritanopia
4292394701

Trichromacy



Original Color
4292198839

Protanomaly
4291806136

Deuteranomaly
4292526008

Tritanomaly
4292329413

Monochromacy



Original Color
4292198839

Achromatopsia
4291217094

Achromatomaly
4291544257

CSS Examples

Text

The CSS property to change the color of the text to Android 4292198839 is called "color". The color property can be set on classes, ids or directly on the HTML element.

This example shows how text in the color `rgb(213, 193, 183)` looks like.

```
.text, #text, p{  
    color:rgb(213, 193, 183)  
}
```

If you want to add a text shadow in that color use the text-shadow property, you can generate a text shadow directly with our [CSS Text Shadow Generator](#).

Here you see how black text with a 4 pixel rgb(213, 193, 183) colored shadow looks like.

```
.shadow{ text-shadow: 4px 4px 2px rgb(213, 193, 183) }
```

Border

The CSS property to change the border of an element to Android 4292198839 is called "border". The border property can be set on classes, ids or directly on the HTML element.

This example shows the color as border, it can be applied via the CSS property "border" or "border-color".

```
.border, #border, table{ border:4px solid rgb(213, 193, 183) }
```

If only the border color should be changed use the property `border-color`.

```
.border{ border-color:rgb(213, 193, 183) }
```

If you want to add a box shadow in that color use:

Here you see how a box with a 4 pixel `rgb(213, 193, 183)` colored shadow looks like.

```
.boxshadow{ -moz-box-shadow:4px 4px 4px  
4px rgb(213, 193, 183); -webkit-box-  
shadow:4px 4px 4px 4px rgb(213, 193, 183);  
box-shadow:4px 4px 4px 4px rgb(213, 193,  
183) }
```

Background

The CSS property to change the background color of an element to Android 4292198839 is called "background". The background property can be set on classes, ids or directly on the HTML element.

```
.background, #background, body{  
background: rgb(213, 193, 183) }
```

If only the background color should be changed can be used:

```
.background{ background-color: rgb(213,  
193, 183) }
```

This example shows the color as background, it is applied via the CSS property "background".

To optimize and compress your CSS code, you can use our [online CSS compressor and optimizer](#) based on csstidy. If you want to create a linear or radial gradient as background or border, check our [CSS Gradient Generator](#).

Hey! You found this booklet interesting? Support Converting Colors with the new Membership Option!

The pro membership hides all ads, plus gives you double the colors in the color bucket, and more awesome pro features!

[Learn more, Memberships starting at \\$2.50/m!](#)

**Follow me
on Twitter!**

@ConvertingColor