

Converting Colors

Android(4292237448)

Have a look what the booklet for
Android(4292237448) contains.

Android(4292237448)	3
<i>Conversions</i>	4
<i>Details</i>	6
<i>Harmonies</i>	11
<i>Previews</i>	23
<i>Color Blindness Simulation</i>	26
<i>CSS Examples</i>	29

Color

Android(4292237448)

Conversions

Conversions Part 1

Format	Color
Hex	D65888
RGB	214, 88, 136
RGB Percent	84%, 35%, 53%
CMY	0.1608, 0.6549, 0.4667
CMYK	0.00, 0.59, 0.36, 0.16
HSL	337°, 61%, 59%
HSV	337°, 59%, 84%
XYZ	35.6652, 23.0532, 25.8625
YIQ	131.1460, 59.6880, 41.6400

Conversions

Conversions Part 2

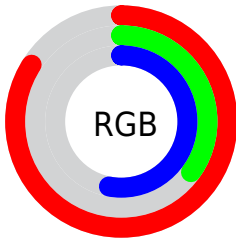
Format	Color
R_{YB}	214, 88, 136
Decimal	14047368
CIE _{Lab}	55.13, 54.06, -1.23
CIE _{LCh}	55, 54.070, 358.699
Yxy	23.0532, 0.4217, 0.2726
Android (android.graphics.Color)	4292237448 (0xFFD65888)
YUV	131.1460, 2.3930, 72.6630
Hunter-Lab	48.0137, 48.5682, 1.6732

Details

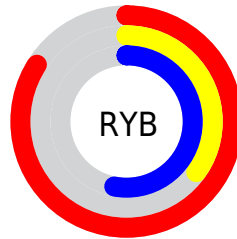
The Android color `4292237448` is a dark color, and the websafe version is hex `CC6699`. The color can be described as middle muted rose. A complement of this color would be `4284012198`, and the grayscale version is `4286808963`.

A 20% lighter version of the original color is `4294938557`, and `4288355670` is the 20% darker color. If you saturate the color by 10%, you get `4292232059`, and if you desaturate by 10%, it is `4292242837`.

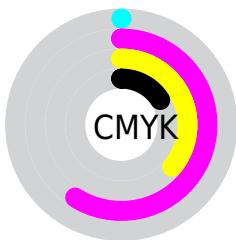
Distribution



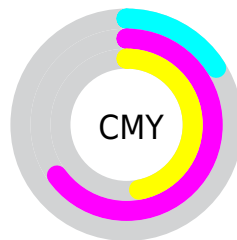
- Red (84%)
- Green (35%)
- Blue (53%)



- Red (84%)
- Yellow (35%)
- Blue (53%)



- Cyan (0%)
- Magenta (59%)
- Yellow (36%)
- Black (16%)



- Cyan (16%)
- Magenta (65%)
- Yellow (47%)

Brightness & Saturation Gradients

These gradients show how the Android color 4292237448 changes by changing the brightness by 10 percent. The first figure shows a shift by +10% for each color and the second figure -10%.

Similar to the brightness gradients but the following saturation gradients show a change of the Android color 4292237448 by changing the saturation by 10% instead.

 4292237448

 4292237448

4294967295

 4290264175

 4294938557

 4288355670

 4294945753

 4286513215

 4294952949

 4284612650

 4294960383

 4282843157

 4281139201

 4278190080

 4292237448

 4292237448

 4292232059

 4292242837

 4292226414

 4292248482

 4292221024

 4292253872

 4292215379

 4292259517

 4292214866

 4292264906

 4292270295

 4292275941

 4292280306

 4292280319

Harmonies

Analogous

The Analogous color harmony consists of three colors that are next to each other on the color wheel.



4290471093



4292237448



4292304218

Triad

The Triadic color harmony groups three colors that are evenly spaced from another and form a triangle on the color wheel.



4292237448



4285566506



4278228435

Complementary

The Complementary color scheme is a pair of colors which are on the opposite of each other on the color wheel.



4292237448



4284012198

Split Complementary

Split-complementary colors differ from the complementary color scheme. The scheme consists of three colors, the original color and two neighbors of the complement color.



4278229680



4292237448



4280981073

Square

The Square scheme is like the rectangle color scheme, but the four colors are evenly spaced on the color wheel.



4292237448



4288577820



4278229632



4278225634

Rectangle

The Rectangle color scheme consists of four colors that form a rectangle on the color wheel.



4292237448



4291520831



4278229632



4278228937

Sweetspot

The Sweet Spot groups the original color and five complimentary colors.



4292237448



4294955491



4289091798



4286604142



4278190080



4286611584

Same Dimension

The Same Dimension uses a secret algorithm to generate beautiful new colors.



4292237448



4294920847



4292241240



4285227108



4289396801



4281008145

Inverse Universe

The Inverse Universe completely reimagines the original color for something new.



4292237448



4294920847



4284008406



4285227108



4289396801



4281008145

Previews

White Background



This preview shows how the Android color 4292237448 looks on a white background.

Color Contrast Check

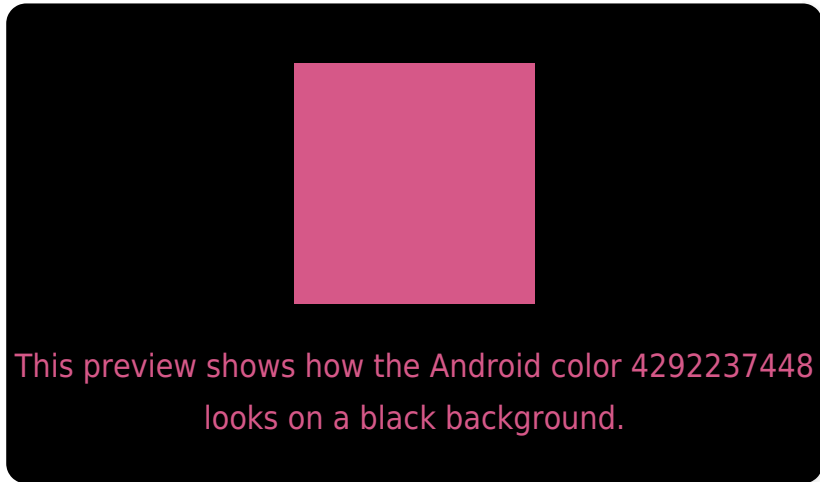
Large Text (above 18pt) WCAG AA ✓ Pass

Any Text WCAG AA ✗ Fail

Large Text (above 18pt) WCAG AAA ✗ Fail

Any Text WCAG AAA ✗ Fail

Black Background



Color Contrast Check

Large Text (above 18pt) WCAG AA ✓ Pass

Any Text WCAG AA ✓ Pass

Large Text (above 18pt) WCAG AAA ✓ Pass

Any Text WCAG AAA × Fail

If you want to check with other color combinations, try the [Color Contrast Checker](#).

Android 4292237448 Background



This preview shows how black text looks on a background with the Android color 4292237448.



This preview shows how white text looks on a background with the Android color 4292237448.

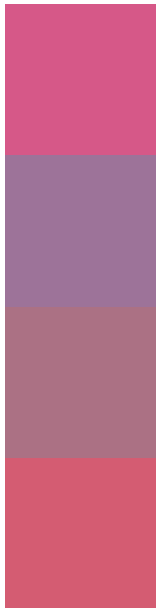
Color Blindness Simulation

Color vision deficiency is a very complex topic, and I could not describe the different causes any better than Wikipedia does, so if you want to learn more, you should check out their [article about color blindness](#).

Dichromacy



Trichromacy



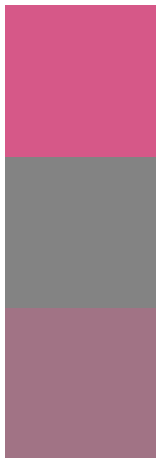
Original Color
4292237448

Protanomaly
4288508825

Deuteranomaly
4289425796

Tritanomaly
4292107378

Monochromacy



Original Color
4292237448

Achromatopsia
4286808963

Achromatomaly
4288770949

CSS Examples

Text

The CSS property to change the color of the text to Android 4292237448 is called "color". The color property can be set on classes, ids or directly on the HTML element.

This example shows how text in the color `rgb(214, 88, 136)` looks like.

```
.text, #text, p{  
    color:rgb(214, 88, 136)  
}
```

If you want to add a text shadow in that color use the text-shadow property, you can generate a text shadow directly with our [CSS Text Shadow Generator](#).

Here you see how black text with a 4 pixel rgb(214, 88, 136) colored shadow looks like.

```
.shadow{ text-shadow: 4px 4px 2px rgb(214, 88, 136) }
```

Border

The CSS property to change the border of an element to Android 4292237448 is called "border". The border property can be set on classes, ids or directly on the HTML element.

This example shows the color as border, it can be applied via the CSS property "border" or "border-color".

```
.border, #border, table{ border:4px solid rgb(214, 88, 136) }
```

If only the border color should be changed use the property `border-color`.

```
.border{ border-color:rgb(214, 88, 136) }
```

If you want to add a box shadow in that color use:

Here you see how a box with a 4 pixel `rgb(214, 88, 136)` colored shadow looks like.

```
.boxshadow{ -moz-box-shadow:4px 4px 4px  
4px rgb(214, 88, 136); -webkit-box-  
shadow:4px 4px 4px 4px rgb(214, 88, 136);  
box-shadow:4px 4px 4px 4px rgb(214, 88,  
136) }
```

Background

The CSS property to change the background color of an element to Android 4292237448 is called "background". The background property can be set on classes, ids or directly on the HTML element.

```
.background, #background, body{  
background: rgb(214, 88, 136) }
```

If only the background color should be changed can be used:

```
.background{ background-color: rgb(214, 88,  
136) }
```

This example shows the color as background, it is applied via the CSS property "background".

To optimize and compress your CSS code, you can use our [online CSS compressor and optimizer](#) based on csstidy. If you want to create a linear or radial gradient as background or border, check our [CSS Gradient Generator](#).

Hey! You found this booklet interesting? Support Converting Colors with the new Membership Option!

The pro membership hides all ads, plus gives you double the colors in the color bucket, and more awesome pro features!

[Learn more, Memberships starting at \\$2.50/m!](#)

**Follow me
on Twitter!**

@ConvertingColor