

# Converting Colors

Android(4292238472)

Have a look what the booklet for  
Android(4292238472) contains.

<b>Android(4292238472)</b> .....	3
<b><i>Conversions</i></b> .....	4
<b><i>Details</i></b> .....	6
<b><i>Harmonies</i></b> .....	11
<b><i>Previews</i></b> .....	23
<b><i>Color Blindness Simulation</i></b> .....	26
<b><i>CSS Examples</i></b> .....	29

# Color

**Android(4292238472)**

# Conversions

## Conversions Part 1

<b>Format</b>	<b>Color</b>
Hex	D65C88
RGB	214, 92, 136
RGB Percent	84%, 36%, 53%
CMY	0.1608, 0.6392, 0.4667
CMYK	0.00, 0.57, 0.36, 0.16
HSL	338°, 60%, 60%
HSV	338°, 57%, 84%
XYZ	36.0026, 23.7280, 25.9750
YIQ	133.4940, 58.5880, 39.5480

# Conversions

## Conversions Part 2

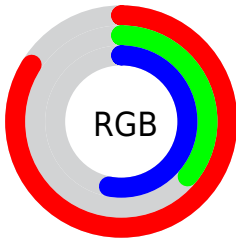
<b>Format</b>	<b>Color</b>
<b>R<sub>YB</sub></b>	214, 92, 136
Decimal	14048392
CIE <sub>Lab</sub>	55.81, 52.23, -0.22
CIE <sub>LCh</sub>	56, 52.228, 359.756
Yxy	23.7280, 0.4201, 0.2769
Android (android.graphics.Color)	4292238472 (0xFFD65C88)
YUV	133.4940, 1.2355, 70.6038
Hunter-Lab	48.7114, 46.6845, 2.4821

# Details

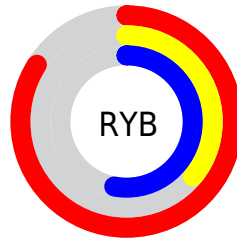
The Android color **4292238472** is a dark color, and the websafe version is hex **CC6699**. The color can be described as middle muted rose. A complement of this color would be **4284274346**, and the grayscale version is **4286940549**.

A 20% lighter version of the original color is **4294939581**, and **4288357206** is the 20% darker color. If you saturate the color by 10%, you get **4292233082**, and if you desaturate by 10%, it is **4292243862**.

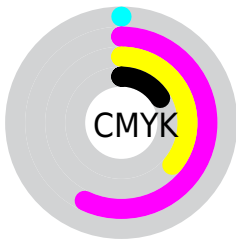
# Distribution



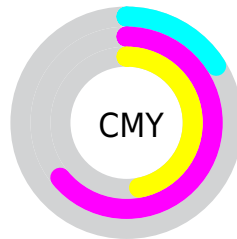
- Red (84%)
- Green (36%)
- Blue (53%)



- Red (84%)
- Yellow (36%)
- Blue (53%)



- Cyan (0%)
- Magenta (57%)
- Yellow (36%)
- Black (16%)



- Cyan (16%)
- Magenta (64%)
- Yellow (47%)

# Brightness & Saturation Gradients

These gradients show how the Android color 4292238472 changes by changing the brightness by 10 percent. The first figure shows a shift by +10% for each color and the second figure -10%.

Similar to the brightness gradients but the following saturation gradients show a change of the Android color 4292238472 by changing the saturation by 10% instead.





4292238472



4292238472

4294967295



4290265455



4294939581



4288357206



4294946777



4286513215



4294953973



4284678186



4294961407



4282843157



4281204738



4278190080



4292238472



4292238472



4292233082



4292243862

 4292227437

 4292249507

 4292222047

 4292254897

 4292216401

 4292260543

 4292214861

 4292265932

 4292271322

 4292276968

 4292280309

 4292280319

# Harmonies

## Analogous

The Analogous color harmony consists of three colors that are next to each other on the color wheel.



4290537396



4292238472



4292239963

# Triad

The Triadic color harmony groups three colors that are evenly spaced from another and form a triangle on the color wheel.



4292238472



4285632561



4278228691

# Complementary

The Complementary color scheme is a pair of colors which are on the opposite of each other on the color wheel.



4292238472



4284274346

# Split Complementary

Split-complementary colors differ from the complementary color scheme. The scheme consists of three colors, the original color and two neighbors of the complement color.



4278229937



4292238472



4281309270

# Square

The Square scheme is like the rectangle color scheme, but the four colors are evenly spaced on the color wheel.



4292238472



4288578339



4278230148



4278225888

# Rectangle

The Rectangle color scheme consists of four colors that form a rectangle on the color wheel.



4292238472



4291456066



4278230148



4278229194



# Sweetspot

The Sweet Spot groups the original color and five complimentary colors.



4292238472



4294956259



4289289430



4286604911



4278190080



4286611584



# Same Dimension

The Same Dimension uses a secret algorithm to generate beautiful new colors.



4292238472



4294922896



4292242524



4285227108



4289396798



4281008144



# Inverse Universe

The Inverse Universe completely reimagines the original color for something new.



4292238472



4294922896



4284270294



4285227108



4289396798



4281008144



# Previews

## White Background



This preview shows how the Android color 4292238472 looks on a white background.

## Color Contrast Check

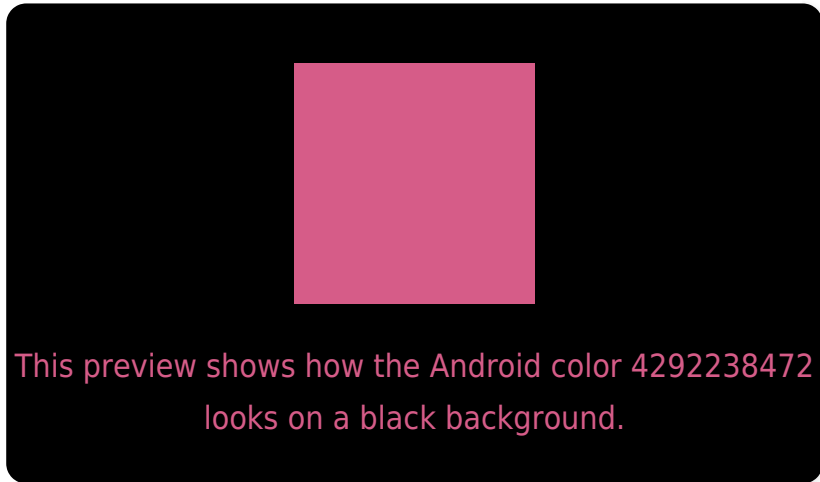
Large Text (above 18pt) WCAG AA ✓ Pass

Any Text WCAG AA ✗ Fail

Large Text (above 18pt) WCAG AAA ✗ Fail

Any Text WCAG AAA ✗ Fail

# Black Background



## Color Contrast Check

Large Text (above 18pt) WCAG AA ✓ Pass

Any Text WCAG AA ✓ Pass

Large Text (above 18pt) WCAG AAA ✓ Pass

Any Text WCAG AAA × Fail

If you want to check with other color combinations, try the [Color Contrast Checker](#).



# Android 4292238472 Background



This preview shows how black text looks on a background with the Android color 4292238472.



This preview shows how white text looks on a background with the Android color 4292238472.

# Color Blindness Simulation

Color vision deficiency is a very complex topic, and I could not describe the different causes any better than Wikipedia does, so if you want to learn more, you should check out their [article about color blindness](#).

## Dichromacy



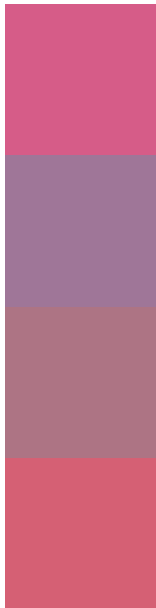
**Original Color**  
4292238472

**Protanopia**  
4286612897

**Deuteranopia**  
4287988354



# Trichromacy



**Original Color**  
4292238472

**Protanomaly**  
4288640664

**Deuteranomaly**  
4289557636

**Tritanomaly**  
4292173940

# Monochromacy



**Original Color**  
4292238472

**Achromatopsia**  
4286940549

**Achromatomaly**  
4288837254

# CSS Examples

## Text

The CSS property to change the color of the text to Android 4292238472 is called "color". The color property can be set on classes, ids or directly on the HTML element.

This example shows how text in the color `rgb(214, 92, 136)` looks like.

```
.text, #text, p{  
    color:rgb(214, 92, 136)  
}
```

If you want to add a text shadow in that color use the text-shadow property, you can generate a text shadow directly with our [CSS Text Shadow Generator](#).

Here you see how black text with a 4 pixel rgb(214, 92, 136) colored shadow looks like.

```
.shadow{ text-shadow: 4px 4px 2px rgb(214, 92, 136) }
```

## Border

The CSS property to change the border of an element to Android 4292238472 is called "border". The border property can be set on classes, ids or directly on the HTML element.

This example shows the color as border, it can be applied via the CSS property "border" or "border-color".

```
.border, #border, table{ border:4px solid rgb(214, 92, 136) }
```

If only the border color should be changed use the property `border-color`.

```
.border{ border-color:rgb(214, 92, 136) }
```

If you want to add a box shadow in that color use:

Here you see how a box with a 4 pixel `rgb(214, 92, 136)` colored shadow looks like.

```
.boxshadow{ -moz-box-shadow:4px 4px 4px  
4px rgb(214, 92, 136); -webkit-box-  
shadow:4px 4px 4px 4px rgb(214, 92, 136);  
box-shadow:4px 4px 4px 4px rgb(214, 92,  
136) }
```

# Background

The CSS property to change the background color of an element to Android 4292238472 is called "background". The background property can be set on classes, ids or directly on the HTML element.

```
.background, #background, body{  
background: rgb(214, 92, 136) }
```

If only the background color should be changed can be used:

```
.background{ background-color: rgb(214, 92,  
136) }
```

This example shows the color as background, it is applied via the CSS property "background".

To optimize and compress your CSS code, you can use our [online CSS compressor and optimizer](#) based on csstidy. If you want to create a linear or radial gradient as background or border, check our [CSS Gradient Generator](#).



Hey! You found this booklet interesting? Support Converting Colors with the new Membership Option!

The pro membership hides all ads, plus gives you double the colors in the color bucket, and more awesome pro features!

**[Learn more, Memberships starting at \\$2.50/m!](#)**

**Follow me  
on Twitter!**

@ConvertingColor