

Converting Colors

Android(4292248227)

Have a look what the booklet for
Android(4292248227) contains.

Android(4292248227)	3
<i>Conversions</i>	4
<i>Details</i>	6
<i>Harmonies</i>	11
<i>Previews</i>	23
<i>Color Blindness Simulation</i>	26
<i>CSS Examples</i>	29

Color

Android(4292248227)

Conversions

Conversions Part 1

Format	Color
Hex	D682A3
RGB	214, 130, 163
RGB Percent	84%, 51%, 64%
CMY	0.1608, 0.4902, 0.3608
CMYK	0.00, 0.39, 0.24, 0.16
HSL	336°, 51%, 67%
HSV	336°, 39%, 84%
XYZ	42.3250, 32.9057, 38.7710
YIQ	158.8780, 39.4710, 28.0710

Conversions

Conversions Part 2

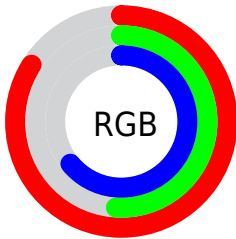
Format	Color
R _Y B	214, 130, 163
Decimal	14058147
CIE Lab	64.08, 36.63, -3.68
CIE LCh	64, 36.811, 354.262
Yxy	32.9057, 0.3713, 0.2886
Android (android.graphics.Color)	4292248227 (0xFFD682A3)
YUV	158.8780, 2.0321, 48.3420
Hunter-Lab	57.3635, 31.3181, 0.0814

Details

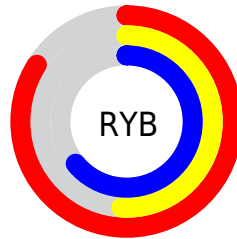
The Android color `4292248227` is a light color, and the websafe version is hex `CC6699`. A complement of this color would be `4286764725`, and the grayscale version is `4288651167`.

A 20% lighter version of the original color is `4294949082`, and `4288499567` is the 20% darker color. If you saturate the color by 10%, you get `4292242838`, and if you desaturate by 10%, it is `4292253616`.

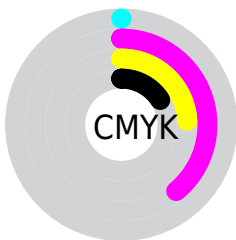
Distribution



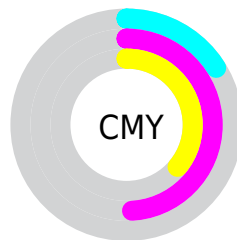
- Red (84%)
- Green (51%)
- Blue (64%)



- Red (84%)
- Yellow (51%)
- Blue (64%)



- Cyan (0%)
- Magenta (39%)
- Yellow (24%)
- Black (16%)



- Cyan (16%)
- Magenta (49%)
- Yellow (36%)

Brightness & Saturation Gradients

These gradients show how the Android color 4292248227 changes by changing the brightness by 10 percent. The first figure shows a shift by +10% for each color and the second figure -10%.

Similar to the brightness gradients but the following saturation gradients show a change of the Android color 4292248227 by changing the saturation by 10% instead.



4292248227



4292248227

4294967295



4290341001



4294949082



4288499567



4294956278



4286723671



4294963711



4284947520



4283236394



4281663510



4279697408



4278190080



4292248227



4292248227

 4292242838

 4292253616

 4292237193

 4292259261

 4292231804

 4292264650

 4292226159

 4292270295

 4292220770

 4292275684

 4292215381

 4292280305

 4292214868

 4292280318

 4292280319

Harmonies

Analogous

The Analogous color harmony consists of three colors that are next to each other on the color wheel.



4290742722



4292248227



4292576130

Triad

The Triadic color harmony groups three colors that are evenly spaced from another and form a triangle on the color wheel.



4292248227



4287996254



4279740624

Complementary

The Complementary color scheme is a pair of colors which are on the opposite of each other on the color wheel.



4292248227



4286764725

Split Complementary

Split-complementary colors differ from the complementary color scheme. The scheme consists of three colors, the original color and two neighbors of the complement color.



4278234293



4292248227



4285507956

Square

The Square scheme is like the rectangle color scheme, but the four colors are evenly spaced on the color wheel.



4292248227



4290156378



4282494100



4284457180

Rectangle

The Rectangle color scheme consists of four colors that form a rectangle on the color wheel.



4292248227



4292118639



4282494100



4278233800

Sweetspot

The Sweet Spot groups the original color and five complimentary colors.



4292248227



4294959340



4290020054



4286606965



4278190080



4286611584

Same Dimension

The Same Dimension uses a secret algorithm to generate beautiful new colors.



4292248227



4294936502



4292250242



4285227109



4289396803



4281008145

Inverse Universe

The Inverse Universe completely reimagines the original color for something new.



4292248227



4294936502



4286762710



4285227109



4289396803



4281008145

Previews

White Background



This preview shows how the Android color 4292248227 looks on a white background.

Color Contrast Check

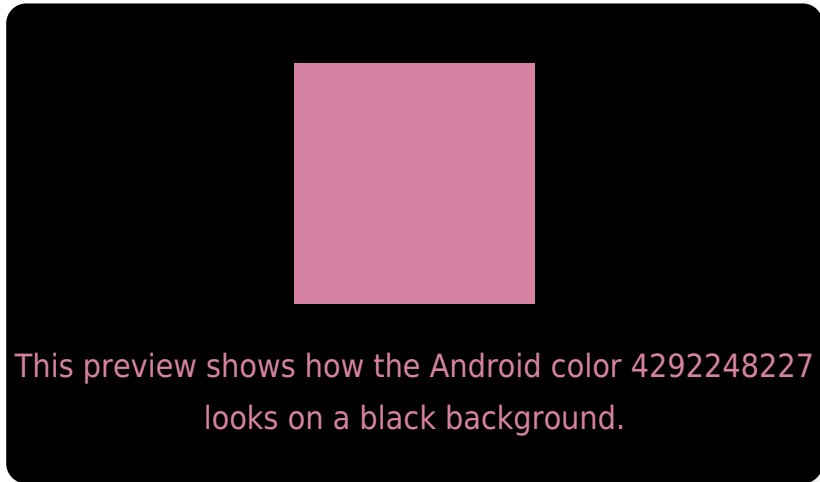
Large Text (above 18pt) WCAG AA × Fail

Any Text WCAG AA × Fail

Large Text (above 18pt) WCAG AAA × Fail

Any Text WCAG AAA × Fail

Black Background



Color Contrast Check

Large Text (above 18pt) WCAG AA ✓ Pass

Any Text WCAG AA ✓ Pass

Large Text (above 18pt) WCAG AAA ✓ Pass

Any Text WCAG AAA ✓ Pass

If you want to check with other color combinations, try the [Color Contrast Checker](#).

Android 4292248227 Background



This preview shows how black text looks on a background with the Android color 4292248227.




This preview shows how white text looks on a background with the Android color 4292248227.

Color Blindness Simulation

Color vision deficiency is a very complex topic, and I could not describe the different causes any better than Wikipedia does, so if you want to learn more, you should check out their [article about color blindness](#).

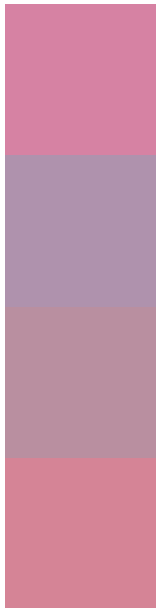
Dichromacy





Tritanopia
4292117903

Trichromacy



Original Color
4292248227

Protanomaly
4289696429

Deuteranomaly
4290351008

Tritanomaly
4292183190

Monochromacy



Original Color
4292248227

Achromatopsia
4288651167

Achromatomaly
4289959072

CSS Examples

Text

The CSS property to change the color of the text to Android 4292248227 is called "color". The color property can be set on classes, ids or directly on the HTML element.

This example shows how text in the color `rgb(214, 130, 163)` looks like.

```
.text, #text, p{  
    color:rgb(214, 130, 163)  
}
```

If you want to add a text shadow in that color use the text-shadow property, you can generate a text shadow directly with our [CSS Text Shadow Generator](#).

Here you see how black text with a 4 pixel rgb(214, 130, 163) colored shadow looks like.

```
.shadow{ text-shadow: 4px 4px 2px rgb(214, 130, 163) }
```

Border

The CSS property to change the border of an element to Android 4292248227 is called "border". The border property can be set on classes, ids or directly on the HTML element.

This example shows the color as border, it can be applied via the CSS property "border" or "border-color".

```
.border, #border, table{ border:4px solid rgb(214, 130, 163) }
```

If only the border color should be changed use the property `border-color`.

```
.border{ border-color:rgb(214, 130, 163) }
```

If you want to add a box shadow in that color use:

Here you see how a box with a 4 pixel `rgb(214, 130, 163)` colored shadow looks like.

```
.boxshadow{ -moz-box-shadow:4px 4px 4px  
4px rgb(214, 130, 163); -webkit-box-  
shadow:4px 4px 4px 4px rgb(214, 130, 163);  
box-shadow:4px 4px 4px 4px rgb(214, 130,  
163) }
```

Background

The CSS property to change the background color of an element to Android 4292248227 is called "background". The background property can be set on classes, ids or directly on the HTML element.

```
.background, #background, body{  
background: rgb(214, 130, 163) }
```

If only the background color should be changed can be used:

```
.background{ background-color: rgb(214,  
130, 163) }
```

This example shows the color as background, it is applied via the CSS property "background".

To optimize and compress your CSS code, you can use our [online CSS compressor and optimizer](#) based on csstidy. If you want to create a linear or radial gradient as background or border, check our [CSS Gradient Generator](#).

Hey! You found this booklet interesting? Support Converting Colors with the new Membership Option!

The pro membership hides all ads, plus gives you double the colors in the color bucket, and more awesome pro features!

[Learn more, Memberships starting at \\$2.50/m!](#)

**Follow me
on Twitter!**

@ConvertingColor