

Converting Colors

Android(4292250276)

Have a look what the booklet for
Android(4292250276) contains.

Android(4292250276)	3
<i>Conversions</i>	4
<i>Details</i>	6
<i>Harmonies</i>	11
<i>Previews</i>	23
<i>Color Blindness Simulation</i>	26
<i>CSS Examples</i>	29

Color

Android(4292250276)

Conversions

Conversions Part 1

Format	Color
Hex	D68AA4
RGB	214, 138, 164
RGB Percent	84%, 54%, 64%
CMY	0.1608, 0.4588, 0.3569
CMYK	0.00, 0.36, 0.23, 0.16
HSL	339°, 48%, 69%
HSV	339°, 36%, 84%
XYZ	43.5209, 35.1534, 39.6134
YIQ	163.6880, 36.9500, 24.1980

Conversions

Conversions Part 2

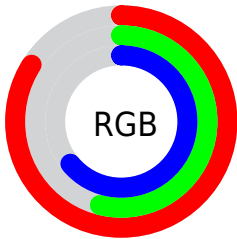
Format	Color
R _Y B	214, 138, 164
Decimal	14060196
CIE Lab	65.87, 32.50, -1.63
CIE LCh	66, 32.542, 357.138
Yxy	35.1534, 0.3679, 0.2972
Android (android.graphics.Color)	4292250276 (0xFFD68AA4)
YUV	163.6880, 0.1538, 44.1236
Hunter-Lab	59.2903, 27.2662, 1.8900

Details

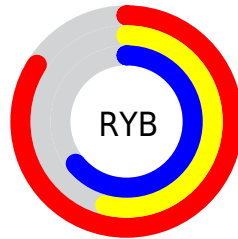
The Android color `4292250276` is a light color, and the websafe version is hex `CC9999`. A complement of this color would be `4287289020`, and the grayscale version is `4288980132`.

A 20% lighter version of the original color is `4294951131`, and `4288567152` is the 20% darker color. If you saturate the color by 10%, you get `4292244886`, and if you desaturate by 10%, it is `4292255666`.

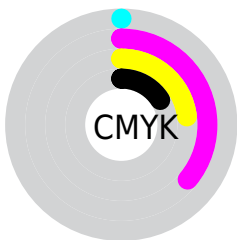
Distribution



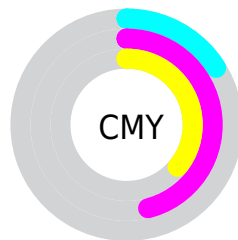
- Red (84%)
- Green (54%)
- Blue (64%)



- Red (84%)
- Yellow (54%)
- Blue (64%)



- Cyan (0%)
- Magenta (36%)
- Yellow (23%)
- Black (16%)



- Cyan (16%)
- Magenta (46%)
- Yellow (36%)

Brightness & Saturation Gradients

These gradients show how the Android color 4292250276 changes by changing the brightness by 10 percent. The first figure shows a shift by +10% for each color and the second figure -10%.

Similar to the brightness gradients but the following saturation gradients show a change of the Android color 4292250276 by changing the saturation by 10% instead.

 4292250276

 4292250276

4294967295

 4290408586

 4294951131

 4288567152

 4294958583

 4286791256

 4294965759

 4285015617

 4283305003

 4281663510

 4280025089

 4278190080

 4292250276

 4292250276

 4292244886

 4292255666

 4292239240

 4292261312

 4292233850

 4292266702

 4292228204

 4292272348

 4292222814

 4292277738

 4292217424

 4292280312

 4292214857

 4292280319

Harmonies

Analogous

The Analogous color harmony consists of three colors that are next to each other on the color wheel.



4290941120



4292250276



4292447367

Triad

The Triadic color harmony groups three colors that are evenly spaced from another and form a triangle on the color wheel.



4292250276



4288194155



4282887120

Complementary

The Complementary color scheme is a pair of colors which are on the opposite of each other on the color wheel.



4292250276



4287289020

Split Complementary

Split-complementary colors differ from the complementary color scheme. The scheme consists of three colors, the original color and two neighbors of the complement color.



4281905082



4292250276



4285967743

Square

The Square scheme is like the rectangle color scheme, but the four colors are evenly spaced on the color wheel.



4292250276



4290157926



4283674780



4285768922

Rectangle

The Rectangle color scheme consists of four colors that form a rectangle on the color wheel.



4292250276



4292055158



4283674780



4282232266

Sweetspot

The Sweet Spot groups the original color and five complimentary colors.



4292250276



4294960109



4290480854



4286607221



4278190080



4286611584

Same Dimension

The Same Dimension uses a secret algorithm to generate beautiful new colors.



4292250276



4294939063



4292253066



4285227108



4289396794



4281008143

Inverse Universe

The Inverse Universe completely reimagines the original color for something new.



4292250276



4294939063



4287286230



4285227108



4289396794



4281008143

Previews

White Background



This preview shows how the Android color 4292250276 looks on a white background.

Color Contrast Check

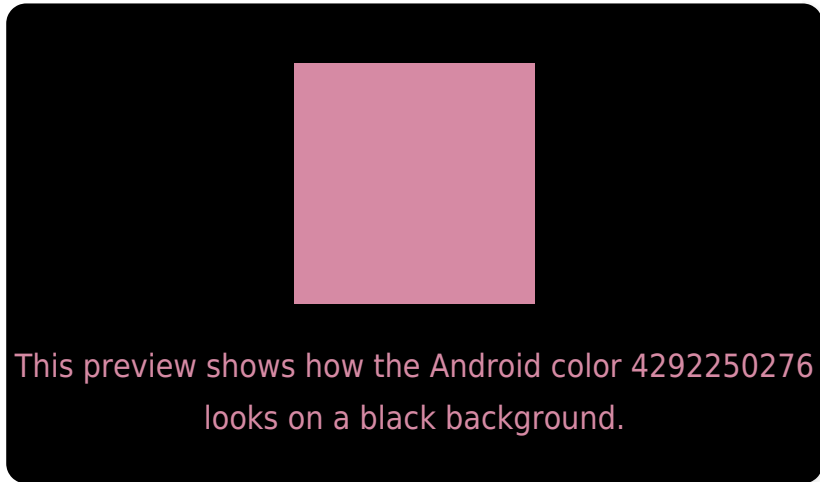
Large Text (above 18pt) WCAG AA × Fail

Any Text WCAG AA × Fail

Large Text (above 18pt) WCAG AAA × Fail

Any Text WCAG AAA × Fail

Black Background



Color Contrast Check

Large Text (above 18pt) WCAG AA ✓ Pass

Any Text WCAG AA ✓ Pass

Large Text (above 18pt) WCAG AAA ✓ Pass

Any Text WCAG AAA ✓ Pass

If you want to check with other color combinations, try the [Color Contrast Checker](#).

Android 4292250276 Background



This preview shows how black text looks on a background with the Android color 4292250276.



This preview shows how white text looks on a background with the Android color 4292250276.

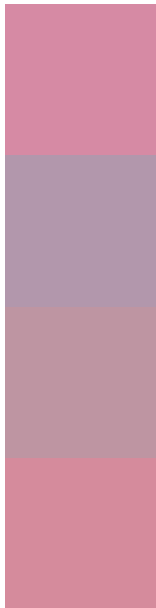
Color Blindness Simulation

Color vision deficiency is a very complex topic, and I could not describe the different causes any better than Wikipedia does, so if you want to learn more, you should check out their [article about color blindness](#).

Dichromacy



Trichromacy



Original Color
4292250276

Protanomaly
4289894316

Deuteranomaly
4290680226

Tritanomaly
4292184988

Monochromacy



Original Color
4292250276

Achromatopsia
4288980132

Achromatomaly
4290157476

CSS Examples

Text

The CSS property to change the color of the text to Android 4292250276 is called "color". The color property can be set on classes, ids or directly on the HTML element.

This example shows how text in the color `rgb(214, 138, 164)` looks like.

```
.text, #text, p{  
    color:rgb(214, 138, 164)  
}
```

If you want to add a text shadow in that color use the text-shadow property, you can generate a text shadow directly with our [CSS Text Shadow Generator](#).

Here you see how black text with a 4 pixel rgb(214, 138, 164) colored shadow looks like.

```
.shadow{ text-shadow: 4px 4px 2px rgb(214, 138, 164) }
```

Border

The CSS property to change the border of an element to Android 4292250276 is called "border". The border property can be set on classes, ids or directly on the HTML element.

This example shows the color as border, it can be applied via the CSS property "border" or "border-color".

```
.border, #border, table{ border:4px solid rgb(214, 138, 164) }
```

If only the border color should be changed use the property `border-color`.

```
.border{ border-color:rgb(214, 138, 164) }
```

If you want to add a box shadow in that color use:

Here you see how a box with a 4 pixel `rgb(214, 138, 164)` colored shadow looks like.

```
.boxshadow{ -moz-box-shadow:4px 4px 4px  
4px rgb(214, 138, 164); -webkit-box-  
shadow:4px 4px 4px 4px rgb(214, 138, 164);  
box-shadow:4px 4px 4px 4px rgb(214, 138,  
164) }
```

Background

The CSS property to change the background color of an element to Android 4292250276 is called "background". The background property can be set on classes, ids or directly on the HTML element.

```
.background, #background, body{  
background: rgb(214, 138, 164) }
```

If only the background color should be changed can be used:

```
.background{ background-color: rgb(214,  
138, 164) }
```

This example shows the color as background, it is applied via the CSS property "background".

To optimize and compress your CSS code, you can use our [online CSS compressor and optimizer](#) based on csstidy. If you want to create a linear or radial gradient as background or border, check our [CSS Gradient Generator](#).

Hey! You found this booklet interesting? Support Converting Colors with the new Membership Option!

The pro membership hides all ads, plus gives you double the colors in the color bucket, and more awesome pro features!

[Learn more, Memberships starting at \\$2.50/m!](#)

**Follow me
on Twitter!**

@ConvertingColor