

Converting Colors

Android(4292251548)

Have a look what the booklet for
Android(4292251548) contains.

Android(4292251548)	3
<i>Conversions</i>	4
<i>Details</i>	6
<i>Harmonies</i>	11
<i>Previews</i>	23
<i>Color Blindness Simulation</i>	26
<i>CSS Examples</i>	29

Color

Android(4292251548)

Conversions

Conversions Part 1

Format	Color
Hex	D68F9C
RGB	214, 143, 156
RGB Percent	84%, 56%, 61%
CMY	0.1608, 0.4392, 0.3882
CMYK	0.00, 0.33, 0.27, 0.16
HSL	349°, 46%, 70%
HSV	349°, 33%, 84%
XYZ	43.5548, 36.3414, 36.1715
YIQ	165.7110, 38.1430, 19.0950

Conversions

Conversions Part 2

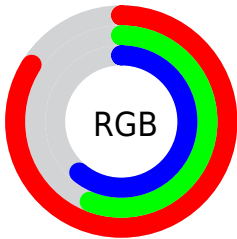
Format	Color
RYB	214, 143, 156
Decimal	14061468
CIELab	66.78, 28.67, 4.21
CIELCh	67, 28.978, 8.351
Yxy	36.3414, 0.3753, 0.3131
Android (android.graphics.Color)	4292251548 (0xFFD68F9C)
YUV	165.7110, -4.7875, 42.3495
Hunter-Lab	60.2838, 23.4688, 6.6235

Details

The Android color `4292251548` is a light color, and the websafe version is hex `CC9999`. A complement of this color would be `4287616713`, and the grayscale version is `4289111718`.

A 20% lighter version of the original color is `4294952402`, and `4288568425` is the 20% darker color. If you saturate the color by 10%, you get `4292246155`, and if you desaturate by 10%, it is `4292256941`.

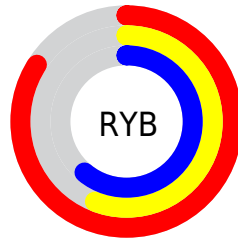
Distribution



Red (84%)

Green (56%)

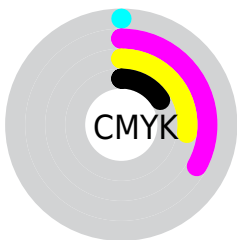
Blue (61%)



Red (84%)

Yellow (56%)

Blue (61%)

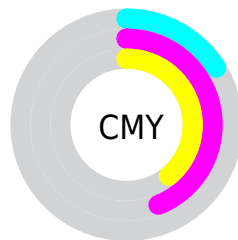


Cyan (0%)

Magenta (33%)

Yellow (27%)

Black (16%)



Cyan (16%)

Magenta (44%)

Yellow (39%)

Brightness & Saturation Gradients

These gradients show how the Android color 4292251548 changes by changing the brightness by 10 percent. The first figure shows a shift by +10% for each color and the second figure -10%.

Similar to the brightness gradients but the following saturation gradients show a change of the Android color 4292251548 by changing the saturation by 10% instead.



4292251548



4292251548

4294967295



4290409858



4294952402



4288568425



4294959855



4286726993

4294967039



4285017146



4283307044



4281663503



4280025089



4278190080



4292251548



4292251548

 4292246155

 4292256941

 4292240505

 4292262591

 4292235112

 4292267984

 4292229462

 4292273634

 4292224069

 4292279027

 4292218675

 4292280319

 4292214823

Harmonies

Analogous

The Analogous color harmony consists of three colors that are next to each other on the color wheel.



4291465910



4292251548



4292121475

Triad

The Triadic color harmony groups three colors that are evenly spaced from another and form a triangle on the color wheel.



4292251548



4287736697



4284918482

Complementary

The Complementary color scheme is a pair of colors which are on the opposite of each other on the color wheel.



4292251548



4287616713

Split Complementary

Split-complementary colors differ from the complementary color scheme. The scheme consists of three colors, the original color and two neighbors of the complement color.



4283412418



4292251548



4285706126

Square

The Square scheme is like the rectangle color scheme, but the four colors are evenly spaced on the color wheel.



4292251548



4289635183



4284002729



4287341270

Rectangle

The Rectangle color scheme consists of four colors that form a rectangle on the color wheel.



4292251548



4291532663



4284002729



4284198094

Sweetspot

The Sweet Spot groups the original color and five complimentary colors.



4292251548



4294960874



4291399638



4286607475



4278190080



4286611584

Same Dimension

The Same Dimension uses a secret algorithm to generate beautiful new colors.



4292251548



4294941100



4292257167



4285227106



4289396767



4281008136

Inverse Universe

The Inverse Universe completely reimagines the original color for something new.



4292251548



4294941100



4287611094



4285227106



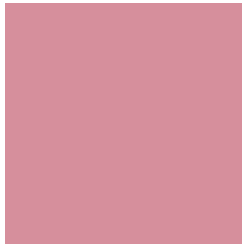
4289396767



4281008136

Previews

White Background



This preview shows how the Android color 4292251548 looks on a white background.

Color Contrast Check

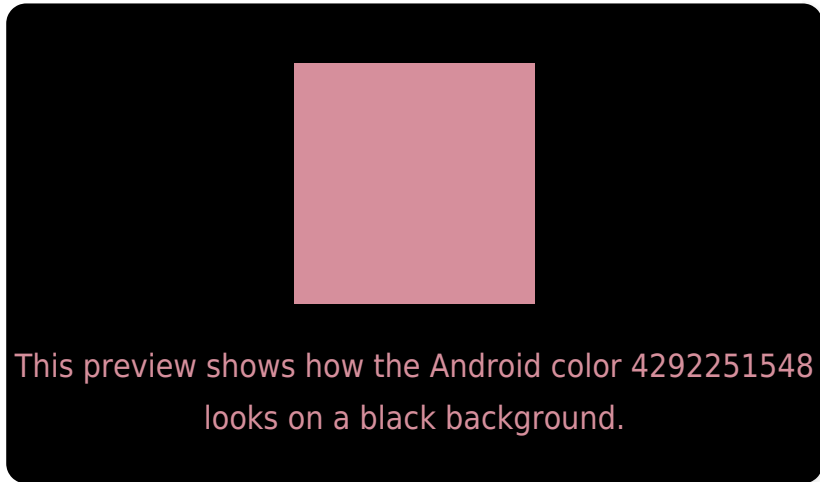
Large Text (above 18pt) WCAG AA × Fail

Any Text WCAG AA × Fail

Large Text (above 18pt) WCAG AAA × Fail

Any Text WCAG AAA × Fail

Black Background



Color Contrast Check

Large Text (above 18pt) WCAG AA ✓ Pass

Any Text WCAG AA ✓ Pass

Large Text (above 18pt) WCAG AAA ✓ Pass

Any Text WCAG AAA ✓ Pass

If you want to check with other color combinations, try the [Color Contrast Checker](#).

Android 4292251548 Background



This preview shows how black text looks on a background with the Android color 4292251548.



This preview shows how white text looks on a background with the Android color 4292251548.

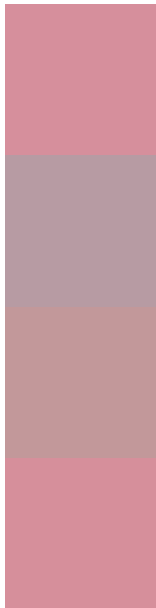
Color Blindness Simulation

Color vision deficiency is a very complex topic, and I could not describe the different causes any better than Wikipedia does, so if you want to learn more, you should check out their [article about color blindness](#).

Dichromacy



Trichromacy



Original Color
4292251548

Protanomaly
4290223011

Deuteranomaly
4290943130

Tritanomaly
4292251547

Monochromacy



Original Color
4292251548

Achromatopsia
4289111718

Achromatomaly
4290223778

CSS Examples

Text

The CSS property to change the color of the text to Android 4292251548 is called "color". The color property can be set on classes, ids or directly on the HTML element.

This example shows how text in the color `rgb(214, 143, 156)` looks like.

```
.text, #text, p{  
    color:rgb(214, 143, 156)  
}
```

If you want to add a text shadow in that color use the text-shadow property, you can generate a text shadow directly with our [CSS Text Shadow Generator](#).

Here you see how black text with a 4 pixel rgb(214, 143, 156) colored shadow looks like.

```
.shadow{ text-shadow: 4px 4px 2px rgb(214, 143, 156) }
```

Border

The CSS property to change the border of an element to Android 4292251548 is called "border". The border property can be set on classes, ids or directly on the HTML element.

This example shows the color as border, it can be applied via the CSS property "border" or "border-color".

```
.border, #border, table{ border:4px solid rgb(214, 143, 156) }
```

If only the border color should be changed use the property `border-color`.

```
.border{ border-color:rgb(214, 143, 156) }
```

If you want to add a box shadow in that color use:

Here you see how a box with a 4 pixel `rgb(214, 143, 156)` colored shadow looks like.

```
.boxshadow{ -moz-box-shadow:4px 4px 4px  
4px rgb(214, 143, 156); -webkit-box-  
shadow:4px 4px 4px 4px rgb(214, 143, 156);  
box-shadow:4px 4px 4px 4px rgb(214, 143,  
156) }
```

Background

The CSS property to change the background color of an element to Android 4292251548 is called "background". The background property can be set on classes, ids or directly on the HTML element.

```
.background, #background, body{  
background: rgb(214, 143, 156) }
```

If only the background color should be changed can be used:

```
.background{ background-color: rgb(214,  
143, 156) }
```

This example shows the color as background, it is applied via the CSS property "background".

To optimize and compress your CSS code, you can use our [online CSS compressor and optimizer](#) based on csstidy. If you want to create a linear or radial gradient as background or border, check our [CSS Gradient Generator](#).

Hey! You found this booklet interesting? Support Converting Colors with the new Membership Option!

The pro membership hides all ads, plus gives you double the colors in the color bucket, and more awesome pro features!

[Learn more, Memberships starting at \\$2.50/m!](#)

**Follow me
on Twitter!**

@ConvertingColor