

# Converting Colors

Android(4292255641)

Have a look what the booklet for  
Android(4292255641) contains.

<b>Android(4292255641)</b> .....	3
<b><i>Conversions</i></b> .....	4
<b><i>Details</i></b> .....	6
<b><i>Harmonies</i></b> .....	11
<b><i>Previews</i></b> .....	23
<b><i>Color Blindness Simulation</i></b> .....	26
<b><i>CSS Examples</i></b> .....	29

# **Color**

**Android(4292255641)**

# Conversions

## Conversions Part 1

Format	Color
Hex	D69F99
RGB	214, 159, 153
RGB Percent	84%, 62%, 60%
CMY	0.1608, 0.3765, 0.4000
CMYK	0.00, 0.26, 0.29, 0.16
HSL	6°, 43%, 72%
HSV	6°, 29%, 84%
XYZ	45.8795, 41.3923, 35.7084
YIQ	174.7610, 34.7060, 9.7940

# Conversions

## Conversions Part 2

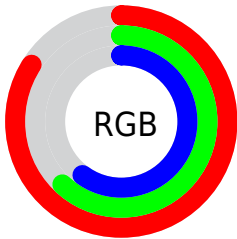
Format	Color
<a href="#">RYB</a>	<a href="#">214, 160, 153</a>
Decimal	<a href="#">14065561</a>
<a href="#">CIELab</a>	<a href="#">70.45, 19.59, 11.13</a>
<a href="#">CIElCh</a>	<a href="#">70, 22.532, 29.601</a>
<a href="#">Yxy</a>	<a href="#">41.3923, 0.3731, 0.3366</a>
Android (android.graphics.Color)	<a href="#">4292255641</a> (0xFFD69F99)
<a href="#">YUV</a>	<a href="#">174.7610, -10.7282, 34.4126</a>
<a href="#">Hunter-Lab</a>	<a href="#">64.3369, 14.7012, 12.1285</a>

# Details

The Android color `4292255641` is a light color, and the websafe version is hex `CC9999`. A complement of this color would be `4288270550`, and the grayscale version is `4289703855`.

A 20% lighter version of the original color is `4294956751`, and `4288572262` is the 20% darker color. If you saturate the color by 10%, you get `4292250756`, and if you desaturate by 10%, it is `4292260526`.

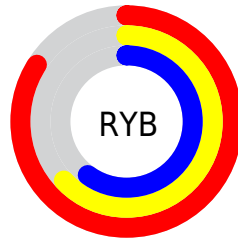
# Distribution



Red (84%)

Green (62%)

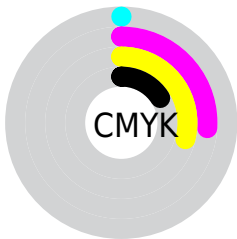
Blue (60%)



Red (84%)

Yellow (63%)

Blue (60%)

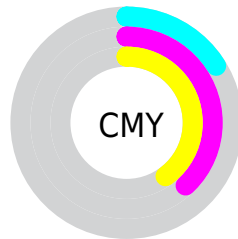


Cyan (0%)

Magenta (26%)

Yellow (29%)

Black (16%)



Cyan (16%)

Magenta (38%)

Yellow (40%)

# Brightness & Saturation Gradients

These gradients show how the Android color 4292255641 changes by changing the brightness by 10 percent. The first figure shows a shift by +10% for each color and the second figure -10%.

Similar to the brightness gradients but the following saturation gradients show a change of the Android color 4292255641 by changing the saturation by 10% instead.



 4292255641

 4292255641

4294967295

 4290413951

 4294956751

 4288572262

 4294963948

 4286796622

 4285086519

 4283376930

 4281798412

 4280418305

 4278190080

 4292255641

 4292255641

 4292250756

 4292260526

 4292245614

 4292265668

 4292240729

 4292270553

 4292235843

 4292275439

 4292230958

 4292280319

 4292225817

 4292220931

 4292220160

# Harmonies

## Analogous

The Analogous color harmony consists of three colors that are next to each other on the color wheel.



4292124333



4292255641



4291667082

# Triad

The Triadic color harmony groups three colors that are evenly spaced from another and form a triangle on the color wheel.



4292255641



4287542935



4287934165

# Complementary

The Complementary color scheme is a pair of colors which are on the opposite of each other on the color wheel.



4292255641



4288270550

# Split Complementary

Split-complementary colors differ from the complementary color scheme. The scheme consists of three colors, the original color and two neighbors of the complement color.



4286362831



4292255641



4286298283

# Square

The Square scheme is like the rectangle color scheme, but the four colors are evenly spaced on the color wheel.



4292255641



4289114504



4285708224



4289701840

# Rectangle

The Rectangle color scheme consists of four colors that form a rectangle on the color wheel.



4292255641



4290947460



4285708224



4287344852

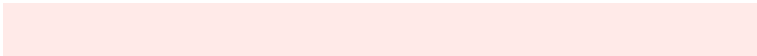


# Sweetspot

The Sweet Spot groups the original color and five complimentary colors.



4292255641



4294961896



4292254161



4286608241



4278190080



4286611584



# Same Dimension

The Same Dimension uses a secret algorithm to generate beautiful new colors.



4292255641



4294947240



4292263321



4285227360



4289401088



4281009152



# Inverse Universe

The Inverse Universe completely reimagines the original color for something new.



4288270550



4289263359



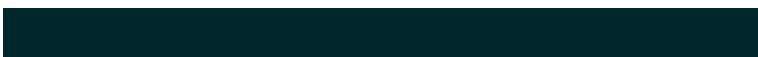
4288262870



4284508779



4278229675

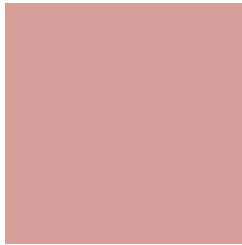


4278200107



# Previews

## White Background



This preview shows how the Android color 4292255641 looks on a white background.

## Color Contrast Check

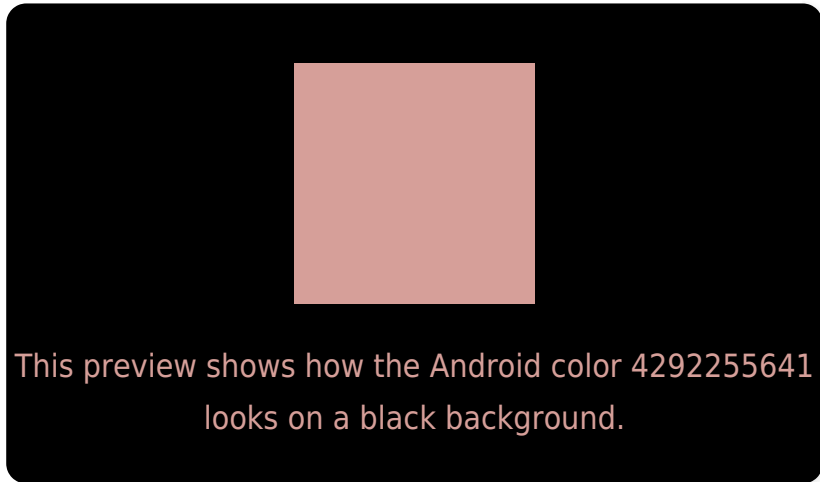
Large Text (above 18pt) WCAG AA × Fail

Any Text WCAG AA × Fail

Large Text (above 18pt) WCAG AAA × Fail

Any Text WCAG AAA × Fail

# Black Background



## Color Contrast Check

Large Text (above 18pt) WCAG AA ✓ Pass

Any Text WCAG AA ✓ Pass

Large Text (above 18pt) WCAG AAA ✓ Pass

Any Text WCAG AAA ✓ Pass

If you want to check with other color combinations, try the [Color Contrast Checker](#).



# Android 4292255641 Background



This preview shows how black text looks on a background with the Android color 4292255641.



This preview shows how white text looks on a background with the Android color 4292255641.

# Color Blindness Simulation

Color vision deficiency is a very complex topic, and I could not describe the different causes any better than Wikipedia does, so if you want to learn more, you should check out their [article about color blindness](#).


## Dichromacy



**Original Color**  
4292255641

**Protanopia**  
4289965216

**Deuteranopia**  
4291143320



**Tritanopia**  
4292386217

# Trichromacy



**Original Color**  
4292255641

**Protanomaly**  
4290815901

**Deuteranomaly**  
4291535768

**Tritanomaly**  
4292320931

# Monochromacy



**Original Color**  
4292255641

**Achromatopsia**  
4289703855

**Achromatomaly**  
4290619815

# CSS Examples

## Text

The CSS property to change the color of the text to Android 4292255641 is called "color". The color property can be set on classes, ids or directly on the HTML element.

This example shows how text in the color `rgb(214, 159, 153)` looks like.

```
.text, #text, p{  
    color:rgb(214, 159, 153)  
}
```

If you want to add a text shadow in that color use the text-shadow property, you can generate a text shadow directly with our [CSS Text Shadow Generator](#).

Here you see how black text with a 4 pixel rgb(214, 159, 153) colored shadow looks like.

```
.shadow{ text-shadow: 4px 4px 2px rgb(214, 159, 153) }
```

## Border

The CSS property to change the border of an element to Android 4292255641 is called "border". The border property can be set on classes, ids or directly on the HTML element.

This example shows the color as border, it can be applied via the CSS property "border" or "border-color".

```
.border, #border, table{ border:4px solid rgb(214, 159, 153) }
```

If only the border color should be changed use the property `border-color`.

```
.border{ border-color:rgb(214, 159, 153) }
```

If you want to add a box shadow in that color use:

Here you see how a box with a 4 pixel `rgb(214, 159, 153)` colored shadow looks like.

```
.boxshadow{ -moz-box-shadow:4px 4px 4px  
4px rgb(214, 159, 153); -webkit-box-  
shadow:4px 4px 4px 4px rgb(214, 159, 153);  
box-shadow:4px 4px 4px 4px rgb(214, 159,  
153) }
```

# Background

The CSS property to change the background color of an element to Android 4292255641 is called "background". The background property can be set on classes, ids or directly on the HTML element.

```
.background, #background, body{  
background: rgb(214, 159, 153) }
```

If only the background color should be changed can be used:

```
.background{ background-color: rgb(214,  
159, 153) }
```

This example shows the color as background, it is applied via the CSS property "background".

To optimize and compress your CSS code, you can use our [online CSS compressor and optimizer](#) based on csstidy. If you want to create a linear or radial gradient as background or border, check our [CSS Gradient Generator](#).



Hey! You found this booklet interesting? Support Converting Colors with the new Membership Option!

The pro membership hides all ads, plus gives you double the colors in the color bucket, and more awesome pro features!

**[Learn more, Memberships starting at \\$2.50/m!](#)**

**Follow me  
on Twitter!**

@ConvertingColor