

Converting Colors

Android(4292260231)

Have a look what the booklet for
Android(4292260231) contains.

Android(4292260231)	3
<i>Conversions</i>	4
<i>Details</i>	6
<i>Harmonies</i>	11
<i>Previews</i>	23
<i>Color Blindness Simulation</i>	26
<i>CSS Examples</i>	29

Color

Android(4292260231)

Conversions

Conversions Part 1

Format	Color
Hex	D6B187
RGB	214, 177, 135
RGB Percent	84%, 69%, 53%
CMY	0.1608, 0.3059, 0.4706
CMYK	0.00, 0.17, 0.37, 0.16
HSL	32°, 49%, 68%
HSV	32°, 37%, 84%
XYZ	47.8269, 47.4897, 29.5673
YIQ	183.2750, 35.5340, -5.2180

Conversions

Conversions Part 2

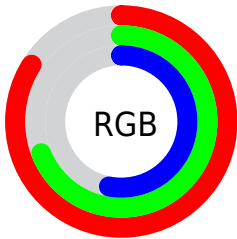
Format	Color
R_{YB}	205, 214, 135
Decimal	14070151
CIE Lab	74.50, 7.60, 26.52
CIE LCh	75, 27.591, 74.015
Yxy	47.4897, 0.3830, 0.3803
Android (android.graphics.Color)	4292260231 (0xFFD6B187)
YUV	183.2750, -23.7996, 26.9458
Hunter-Lab	68.9128, 3.2853, 22.8003

Details

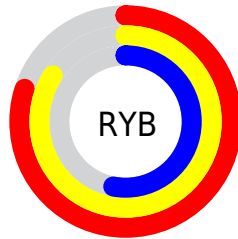
The Android color `4292260231` is a light color, and the websafe version is hex `CC9966`. A complement of this color would be `4287081686`, and the grayscale version is `4290230199`.

A 20% lighter version of the original color is `4294961597`, and `4288576853` is the 20% darker color. If you saturate the color by 10%, you get `4292257650`, and if you desaturate by 10%, it is `4292262812`.

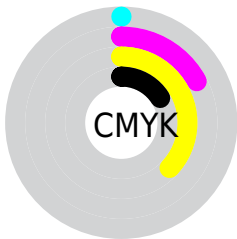
Distribution



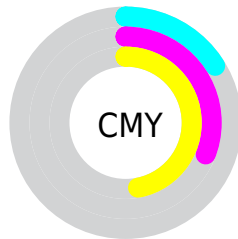
- Red (84%)
- Green (69%)
- Blue (53%)



- Red (80%)
- Yellow (84%)
- Blue (53%)



- Cyan (0%)
- Magenta (17%)
- Yellow (37%)
- Black (16%)



- Cyan (16%)
- Magenta (31%)
- Yellow (47%)

Brightness & Saturation Gradients

These gradients show how the Android color 4292260231 changes by changing the brightness by 10 percent. The first figure shows a shift by +10% for each color and the second figure -10%.

Similar to the brightness gradients but the following saturation gradients show a change of the Android color 4292260231 by changing the saturation by 10% instead.



4292260231



4292260231

4294967295



4290418285



4294961597



4288576853



4294967256



4286800957



4294967285



4285025319



4283381009



4281802752



4280224256



4278190080



4292260231



4292260231

 4292257650

 4292262812

 4292255068

 4292265394

 4292252487

 4292267975

 4292249905

 4292270557

 4292247324

 4292273138

 4292244743

 4292275711

 4292243968

 4292278271

 4292280319

Harmonies

Analogous

The Analogous color harmony consists of three colors that are next to each other on the color wheel.



4293306773



4292260231



4290689414

Triad

The Triadic color harmony groups three colors that are evenly spaced from another and form a triangle on the color wheel.



4292260231



4285515459



4291472860

Complementary

The Complementary color scheme is a pair of colors which are on the opposite of each other on the color wheel.



4292260231



4287081686

Split Complementary

Split-complementary colors differ from the complementary color scheme. The scheme consists of three colors, the original color and two neighbors of the complement color.



4289312488



4292260231



4285449178

Square

The Square scheme is like the rectangle color scheme, but the four colors are evenly spaced on the color wheel.



4292260231



4286891432



4286955239



4292978374

Rectangle

The Rectangle color scheme consists of four colors that form a rectangle on the color wheel.



4292260231



4289445517



4286955239



4290818273

Sweetspot

The Sweet Spot groups the original color and five complimentary colors.



4292260231



4294963939



4292249517



4286609519



4278190080



4286611584

Same Dimension

The Same Dimension uses a secret algorithm to generate beautiful new colors.



4292260231



4294953615



4292204167



4285228640



4289420032



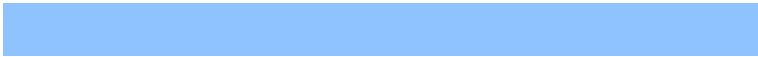
4281014016

Inverse Universe

The Inverse Universe completely reimagines the original color for something new.



4287081686



4287611903



4287137750



4284507499



4278210731



4278195243

Previews

White Background



This preview shows how the Android color 4292260231 looks on a white background.

Color Contrast Check

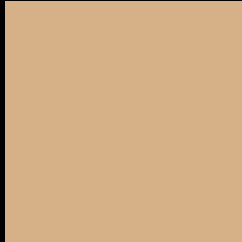
Large Text (above 18pt) WCAG AA × Fail

Any Text WCAG AA × Fail

Large Text (above 18pt) WCAG AAA × Fail

Any Text WCAG AAA × Fail

Black Background



This preview shows how the Android color 4292260231 looks on a black background.

Color Contrast Check

Large Text (above 18pt) WCAG AA ✓ Pass

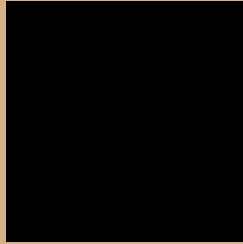
Any Text WCAG AA ✓ Pass

Large Text (above 18pt) WCAG AAA ✓ Pass

Any Text WCAG AAA ✓ Pass

If you want to check with other color combinations, try the [Color Contrast Checker](#).

Android 4292260231 Background



This preview shows how black text looks on a background with the Android color 4292260231.



This preview shows how white text looks on a background with the Android color 4292260231.

Color Blindness Simulation

Color vision deficiency is a very complex topic, and I could not describe the different causes any better than Wikipedia does, so if you want to learn more, you should check out their [article about color blindness](#).


Dichromacy



Original Color
4292260231

Protanopia
4291082122

Deuteranopia
4292456583



Tritanopia
4292586168

Trichromacy



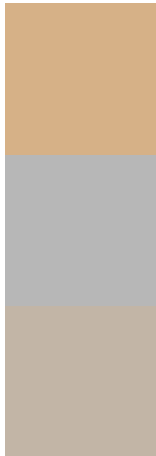
Original Color
4292260231

Protanomaly
4291540361

Deuteranomaly
4292391047

Tritanomaly
4292455846

Monochromacy



Original Color
4292260231

Achromatopsia
4290230199

Achromatomaly
4290950566

CSS Examples

Text

The CSS property to change the color of the text to Android 4292260231 is called "color". The color property can be set on classes, ids or directly on the HTML element.

This example shows how text in the color `rgb(214, 177, 135)` looks like.

```
.text, #text, p{  
    color:rgb(214, 177, 135)  
}
```

If you want to add a text shadow in that color use the text-shadow property, you can generate a text shadow directly with our [CSS Text Shadow Generator](#).

Here you see how black text with a 4 pixel rgb(214, 177, 135) colored shadow looks like.

```
.shadow{ text-shadow: 4px 4px 2px rgb(214, 177, 135) }
```

Border

The CSS property to change the border of an element to Android 4292260231 is called "border". The border property can be set on classes, ids or directly on the HTML element.

This example shows the color as border, it can be applied via the CSS property "border" or "border-color".

```
.border, #border, table{ border:4px solid rgb(214, 177, 135) }
```

If only the border color should be changed use the property `border-color`.

```
.border{ border-color:rgb(214, 177, 135) }
```

If you want to add a box shadow in that color use:

Here you see how a box with a 4 pixel `rgb(214, 177, 135)` colored shadow looks like.

```
.boxshadow{ -moz-box-shadow:4px 4px 4px  
4px rgb(214, 177, 135); -webkit-box-  
shadow:4px 4px 4px 4px rgb(214, 177, 135);  
box-shadow:4px 4px 4px 4px rgb(214, 177,  
135) }
```

Background

The CSS property to change the background color of an element to Android 4292260231 is called "background". The background property can be set on classes, ids or directly on the HTML element.

```
.background, #background, body{  
background: rgb(214, 177, 135) }
```

If only the background color should be changed can be used:

```
.background{ background-color: rgb(214,  
177, 135) }
```

This example shows the color as background, it is applied via the CSS property "background".

To optimize and compress your CSS code, you can use our [online CSS compressor and optimizer](#) based on csstidy. If you want to create a linear or radial gradient as background or border, check our [CSS Gradient Generator](#).

Hey! You found this booklet interesting? Support Converting Colors with the new Membership Option!

The pro membership hides all ads, plus gives you double the colors in the color bucket, and more awesome pro features!

[Learn more, Memberships starting at \\$2.50/m!](#)

**Follow me
on Twitter!**

@ConvertingColor