

Converting Colors

Android(4292263361)

Have a look what the booklet for
Android(4292263361) contains.

Android(4292263361)	3
<i>Conversions</i>	4
<i>Details</i>	6
<i>Harmonies</i>	11
<i>Previews</i>	23
<i>Color Blindness Simulation</i>	26
<i>CSS Examples</i>	29

Color

Android(4292263361)

Conversions

Conversions Part 1

Format	Color
Hex	D6BDC1
RGB	214, 189, 193
RGB Percent	84%, 74%, 76%
CMY	0.1608, 0.2588, 0.2431
CMYK	0.00, 0.12, 0.10, 0.16
HSL	350°, 23%, 79%
HSV	350°, 12%, 84%
XYZ	55.5548, 54.5416, 58.0516
YIQ	196.9310, 13.6160, 6.5440

Conversions

Conversions Part 2

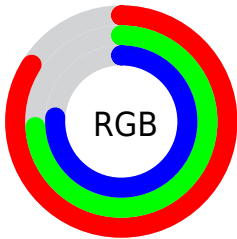
Format	Color
R _Y B	214, 189, 193
Decimal	14073281
CIE Lab	78.78, 9.53, 1.23
CIE LCh	79, 9.613, 7.373
Yxy	54.5416, 0.3304, 0.3244
Android (android.graphics.Color)	4292263361 (0xFFD6BDC1)
YUV	196.9310, -1.9380, 14.9695
Hunter-Lab	73.8523, 5.0337, 5.0917

Details

The Android color `4292263361` is a light color, and the websafe version is hex `CCCCCC`. A complement of this color would be `4290631378`, and the grayscale version is `4291151301`.

A 20% lighter version of the original color is `4294964729`, and `4288645260` is the 20% darker color. If you saturate the color by 10%, you get `4292257967`, and if you desaturate by 10%, it is `4292268755`.

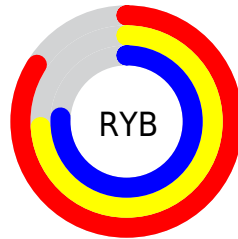
Distribution



Red (84%)

Green (74%)

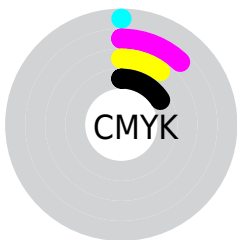
Blue (76%)



Red (84%)

Yellow (74%)

Blue (76%)

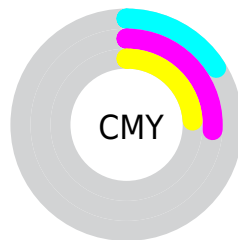


Cyan (0%)

Magenta (12%)

Yellow (10%)

Black (16%)



Cyan (16%)

Magenta (26%)

Yellow (24%)

Brightness & Saturation Gradients

These gradients show how the Android color 4292263361 changes by changing the brightness by 10 percent. The first figure shows a shift by +10% for each color and the second figure -10%.

Similar to the brightness gradients but the following saturation gradients show a change of the Android color 4292263361 by changing the saturation by 10% instead.

 4292263361

 4292263361

4294967295

 4290421414

 4294964729

 4288645260

 4286934642

 4285224538

 4283645762

 4282132780

 4280685592

 4278910976

 4278190080

 4292263361

 4292263361

 4292257967

 4292268755

 4292252317

 4292274405

 4292246923

 4292279799

 4292241273

 4292280319

 4292235879

 4292230485

 4292224835

 4292219441

 4292214818

Harmonies

Analogous

The Analogous color harmony consists of three colors that are next to each other on the color wheel.



4291935946



4292263361



4292263608

Triad

The Triadic color harmony groups three colors that are evenly spaced from another and form a triangle on the color wheel.



4292263361



4290692789



4289971923

Complementary

The Complementary color scheme is a pair of colors which are on the opposite of each other on the color wheel.



4292263361



4290631378

Split Complementary

Split-complementary colors differ from the complementary color scheme. The scheme consists of three colors, the original color and two neighbors of the complement color.



4289579213



4292263361



4290037948

Square

The Square scheme is like the rectangle color scheme, but the four colors are evenly spaced on the color wheel.



4292263361



4291347377



4289644741



4290560981

Rectangle

The Rectangle color scheme consists of four colors that form a rectangle on the color wheel.



4292263361



4292067252



4289644741



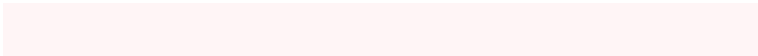
4289775570

Sweetspot

The Sweet Spot groups the original color and five complimentary colors.



4292263361



4294964726



4292001238



4286609786



4278190080



4286611584

Same Dimension

The Same Dimension uses a secret algorithm to generate beautiful new colors.



4292263361



4294958049



4292265405



4285227106



4289396763



4281008135

Inverse Universe

The Inverse Universe completely reimagines the original color for something new.



4292263361



4294958049



4290629334



4285227106



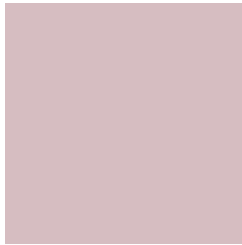
4289396763



4281008135

Previews

White Background



This preview shows how the Android color 4292263361 looks on a white background.

Color Contrast Check

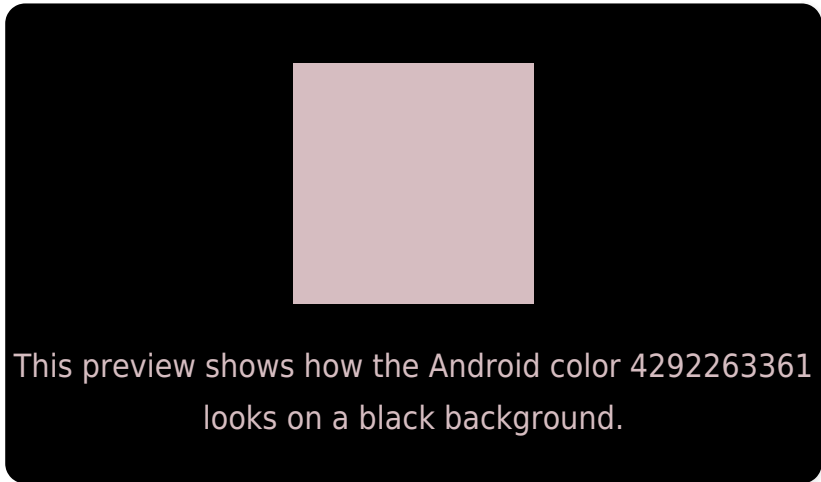
Large Text (above 18pt) WCAG AA × Fail

Any Text WCAG AA × Fail

Large Text (above 18pt) WCAG AAA × Fail

Any Text WCAG AAA × Fail

Black Background



Color Contrast Check

Large Text (above 18pt) WCAG AA ✓ Pass

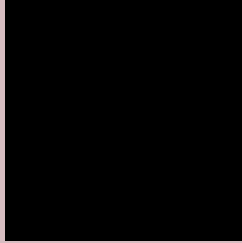
Any Text WCAG AA ✓ Pass

Large Text (above 18pt) WCAG AAA ✓ Pass

Any Text WCAG AAA ✓ Pass

If you want to check with other color combinations, try the [Color Contrast Checker](#).

Android 4292263361 Background



This preview shows how black text looks on a background with the Android color 4292263361.



This preview shows how white text looks on a background with the Android color 4292263361.

Color Blindness Simulation

Color vision deficiency is a very complex topic, and I could not describe the different causes any better than Wikipedia does, so if you want to learn more, you should check out their [article about color blindness](#).

Dichromacy



Original Color

4292263361

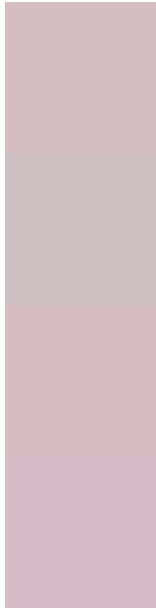
Protanopia

4291216068

Deuteranopia

4292328897

Trichromacy



Original Color
4292263361

Protanomaly
4291608771

Deuteranomaly
4292328897

Tritanomaly
4292328647

Monochromacy



Original Color
4292263361

Achromatopsia
4291151301

Achromatomaly
4291543748

CSS Examples

Text

The CSS property to change the color of the text to Android 4292263361 is called "color". The color property can be set on classes, ids or directly on the HTML element.

This example shows how text in the color `rgb(214, 189, 193)` looks like.

```
.text, #text, p{  
    color:rgb(214, 189, 193)  
}
```

If you want to add a text shadow in that color use the text-shadow property, you can generate a text shadow directly with our [CSS Text Shadow Generator](#).

Here you see how black text with a 4 pixel rgb(214, 189, 193) colored shadow looks like.

```
.shadow{ text-shadow: 4px 4px 2px rgb(214, 189, 193) }
```

Border

The CSS property to change the border of an element to Android 4292263361 is called "border". The border property can be set on classes, ids or directly on the HTML element.

This example shows the color as border, it can be applied via the CSS property "border" or "border-color".

```
.border, #border, table{ border:4px solid rgb(214, 189, 193) }
```

If only the border color should be changed use the property border-color.

```
.border{ border-color:rgb(214, 189, 193) }
```

If you want to add a box shadow in that color use:

Here you see how a box with a 4 pixel rgb(214, 189, 193) colored shadow looks like.

```
.boxshadow{ -moz-box-shadow:4px 4px 4px  
4px rgb(214, 189, 193); -webkit-box-  
shadow:4px 4px 4px 4px rgb(214, 189, 193);  
box-shadow:4px 4px 4px 4px rgb(214, 189,  
193) }
```

Background

The CSS property to change the background color of an element to Android 4292263361 is called "background". The background property can be set on classes, ids or directly on the HTML element.

```
.background, #background, body{  
background: rgb(214, 189, 193) }
```

If only the background color should be changed can be used:

```
.background{ background-color: rgb(214,  
189, 193) }
```

This example shows the color as background, it is applied via the CSS property "background".

To optimize and compress your CSS code, you can use our [online CSS compressor and optimizer](#) based on csstidy. If you want to create a linear or radial gradient as background or border, check our [CSS Gradient Generator](#).

Hey! You found this booklet interesting? Support Converting Colors with the new Membership Option!

The pro membership hides all ads, plus gives you double the colors in the color bucket, and more awesome pro features!

[Learn more, Memberships starting at \\$2.50/m!](#)

**Follow me
on Twitter!**

@ConvertingColor