

Converting Colors

Android(4292263617)

Have a look what the booklet for
Android(4292263617) contains.

Android(4292263617)	3
<i>Conversions</i>	4
<i>Details</i>	6
<i>Harmonies</i>	11
<i>Previews</i>	23
<i>Color Blindness Simulation</i>	26
<i>CSS Examples</i>	29

Color

Android(4292263617)

Conversions

Conversions Part 1

Format	Color
Hex	D6BEC1
RGB	214, 190, 193
RGB Percent	84%, 75%, 76%
CMY	0.1608, 0.2549, 0.2431
CMYK	0.00, 0.11, 0.10, 0.16
HSL	352°, 23%, 79%
HSV	352°, 11%, 84%
XYZ	55.7707, 54.9733, 58.1236
YIQ	197.5180, 13.3410, 6.0210

Conversions

Conversions Part 2

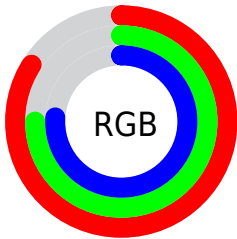
Format	Color
RYB	214, 190, 193
Decimal	14073537
CIELab	79.03, 9.00, 1.60
CIELCh	79, 9.140, 10.061
Yxy	54.9733, 0.3303, 0.3255
Android (android.graphics.Color)	4292263617 (0xFFD6BEC1)
YUV	197.5180, -2.2274, 14.4547
Hunter-Lab	74.1440, 4.5146, 5.4217

Details

The Android color `4292263617` is a light color, and the websafe version is hex `CCCCCC`. A complement of this color would be `4290696915`, and the grayscale version is `4291217094`.

A 20% lighter version of the original color is `4294964985`, and `4288645516` is the 20% darker color. If you saturate the color by 10%, you get `4292258222`, and if you desaturate by 10%, it is `4292269012`.

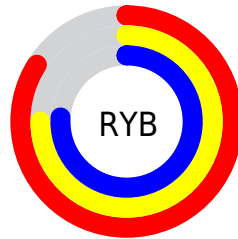
Distribution



Red (84%)

Green (75%)

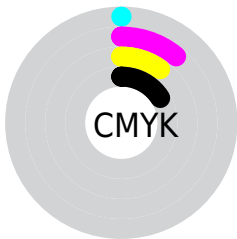
Blue (76%)



Red (84%)

Yellow (75%)

Blue (76%)

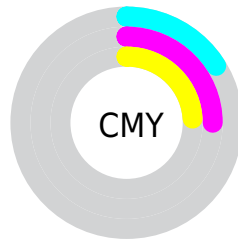


Cyan (0%)

Magenta (11%)

Yellow (10%)

Black (16%)



Cyan (16%)

Magenta (25%)

Yellow (24%)

Brightness & Saturation Gradients

These gradients show how the Android color 4292263617 changes by changing the brightness by 10 percent. The first figure shows a shift by +10% for each color and the second figure -10%.

Similar to the brightness gradients but the following saturation gradients show a change of the Android color 4292263617 by changing the saturation by 10% instead.



4292263617



4292263617

4294967295



4290421670



4294964985



4288645516



4286934898



4285224794



4283645762



4282132780



4280685848



4278976512



4278190080

 4292263617

 4292263617

 4292258222

 4292269012

 4292252572

 4292274662

 4292247177

 4292280057

 4292241526

 4292280319

 4292236131

 4292230737

 4292225086

 4292219691

 4292214811

Harmonies

Analogous

The Analogous color harmony consists of three colors that are next to each other on the color wheel.



4292001738



4292263617



4292263865

Triad

The Triadic color harmony groups three colors that are evenly spaced from another and form a triangle on the color wheel.



4292263617



4290693047



4290102995

Complementary

The Complementary color scheme is a pair of colors which are on the opposite of each other on the color wheel.



4292263617



4290696915

Split Complementary

Split-complementary colors differ from the complementary color scheme. The scheme consists of three colors, the original color and two neighbors of the complement color.



4289710286



4292263617



4290103486

Square

The Square scheme is like the rectangle color scheme, but the four colors are evenly spaced on the color wheel.



4292263617



4291347635



4289776070



4290692052

Rectangle

The Rectangle color scheme consists of four colors that form a rectangle on the color wheel.



4292263617



4292067509



4289776070



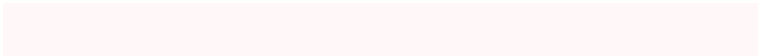
4289972178

Sweetspot

The Sweet Spot groups the original color and five complimentary colors.



4292263617



4294965240



4292067030



4286610043



4278190080



4286611584

Same Dimension

The Same Dimension uses a secret algorithm to generate beautiful new colors.



4292263617



4294958818



4292265918



4285227106



4289396757



4281008133

Inverse Universe

The Inverse Universe completely reimagines the original color for something new.



4292263617



4294958818



4290694614



4285227106



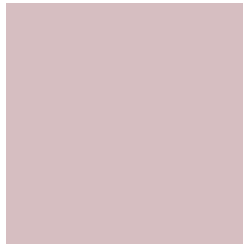
4289396757



4281008133

Previews

White Background



This preview shows how the Android color 4292263617 looks on a white background.

Color Contrast Check

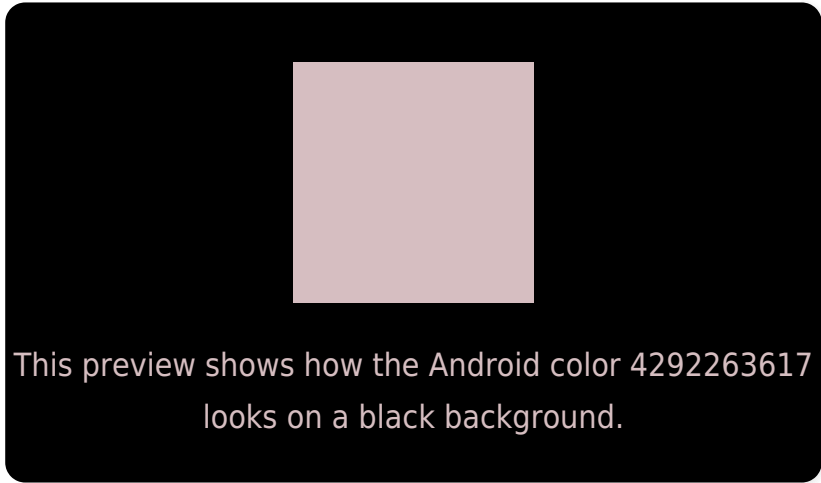
Large Text (above 18pt) WCAG AA × Fail

Any Text WCAG AA × Fail

Large Text (above 18pt) WCAG AAA × Fail

Any Text WCAG AAA × Fail

Black Background



Color Contrast Check

Large Text (above 18pt) WCAG AA ✓ Pass

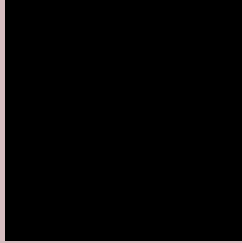
Any Text WCAG AA ✓ Pass

Large Text (above 18pt) WCAG AAA ✓ Pass

Any Text WCAG AAA ✓ Pass

If you want to check with other color combinations, try the [Color Contrast Checker](#).

Android 4292263617 Background



This preview shows how black text looks on a background with the Android color 4292263617.



This preview shows how white text looks on a background with the Android color 4292263617.

Color Blindness Simulation

Color vision deficiency is a very complex topic, and I could not describe the different causes any better than Wikipedia does, so if you want to learn more, you should check out their [article about color blindness](#).


Dichromacy



Original Color
4292263617

Protanopia
4291281860

Deuteranopia
4292394433



Tritanopia
4292328651

Trichromacy



Original Color
4292263617

Protanomaly
4291609027

Deuteranomaly
4292328897

Tritanomaly
4292328903

Monochromacy



Original Color
4292263617

Achromatopsia
4291217094

Achromatomaly
4291609540

CSS Examples

Text

The CSS property to change the color of the text to Android 4292263617 is called "color". The color property can be set on classes, ids or directly on the HTML element.

This example shows how text in the color `rgb(214, 190, 193)` looks like.

```
.text, #text, p{  
    color:rgb(214, 190, 193)  
}
```

If you want to add a text shadow in that color use the text-shadow property, you can generate a text shadow directly with our [CSS Text Shadow Generator](#).

Here you see how black text with a 4 pixel rgb(214, 190, 193) colored shadow looks like.

```
.shadow{ text-shadow: 4px 4px 2px rgb(214, 190, 193) }
```

Border

The CSS property to change the border of an element to Android 4292263617 is called "border". The border property can be set on classes, ids or directly on the HTML element.

This example shows the color as border, it can be applied via the CSS property "border" or "border-color".

```
.border, #border, table{ border:4px solid rgb(214, 190, 193) }
```

If only the border color should be changed use the property `border-color`.

```
.border{ border-color:rgb(214, 190, 193) }
```

If you want to add a box shadow in that color use:

Here you see how a box with a 4 pixel `rgb(214, 190, 193)` colored shadow looks like.

```
.boxshadow{ -moz-box-shadow:4px 4px 4px  
4px rgb(214, 190, 193); -webkit-box-  
shadow:4px 4px 4px 4px rgb(214, 190, 193);  
box-shadow:4px 4px 4px 4px rgb(214, 190,  
193) }
```

Background

The CSS property to change the background color of an element to Android 4292263617 is called "background". The background property can be set on classes, ids or directly on the HTML element.

```
.background, #background, body{  
background: rgb(214, 190, 193) }
```

If only the background color should be changed can be used:

```
.background{ background-color: rgb(214,  
190, 193) }
```

This example shows the color as background, it is applied via the CSS property "background".

To optimize and compress your CSS code, you can use our [online CSS compressor and optimizer](#) based on csstidy. If you want to create a linear or radial gradient as background or border, check our [CSS Gradient Generator](#).

Hey! You found this booklet interesting? Support Converting Colors with the new Membership Option!

The pro membership hides all ads, plus gives you double the colors in the color bucket, and more awesome pro features!

[Learn more, Memberships starting at \\$2.50/m!](#)

**Follow me
on Twitter!**

@ConvertingColor