

Converting Colors

Android(4292264385)

Have a look what the booklet for
Android(4292264385) contains.

Android(4292264385)	3
<i>Conversions</i>	4
<i>Details</i>	6
<i>Harmonies</i>	11
<i>Previews</i>	23
<i>Color Blindness Simulation</i>	26
<i>CSS Examples</i>	29

Color

Android(4292264385)

Conversions

Conversions Part 1

Format	Color
Hex	D6C1C1
RGB	214, 193, 193
RGB Percent	84%, 76%, 76%
CMY	0.1608, 0.2431, 0.2431
CMYK	0.00, 0.10, 0.10, 0.16
HSL	0°, 20%, 80%
HSV	0°, 10%, 84%
XYZ	56.4272, 56.2863, 58.3424
YIQ	199.2790, 12.5160, 4.4520

Conversions

Conversions Part 2

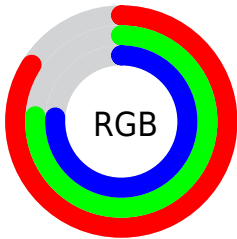
Format	Color
R_{YB}	214, 193, 193
Decimal	14074305
CIE Lab	79.78, 7.40, 2.69
CIE LCh	80, 7.873, 19.960
Yxy	56.2863, 0.3299, 0.3291
Android (android.graphics.Color)	4292264385 (0xFFD6C1C1)
YUV	199.2790, -3.0955, 12.9103
Hunter-Lab	75.0242, 2.9609, 6.4102

Details

The Android color `4292264385` is a light color, and the websafe version is hex `CCCCCC`. A complement of this color would be `4290893526`, and the grayscale version is `4291282887`.

A 20% lighter version of the original color is `4294965753`, and `4288646028` is the 20% darker color. If you saturate the color by 10%, you get `4292258988`, and if you desaturate by 10%, it is `4292269782`.

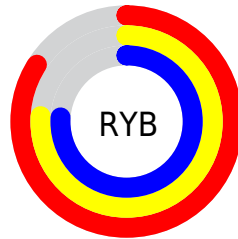
Distribution



Red (84%)

Green (76%)

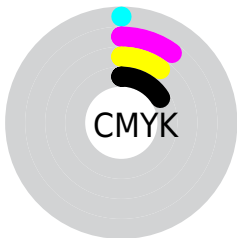
Blue (76%)



Red (84%)

Yellow (76%)

Blue (76%)

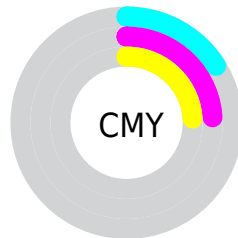


Cyan (0%)

Magenta (10%)

Yellow (10%)

Black (16%)



Cyan (16%)

Magenta (24%)

Yellow (24%)

Brightness & Saturation Gradients

These gradients show how the Android color 4292264385 changes by changing the brightness by 10 percent. The first figure shows a shift by +10% for each color and the second figure -10%.

Similar to the brightness gradients but the following saturation gradients show a change of the Android color 4292264385 by changing the saturation by 10% instead.



4292264385



4292264385

4294967295



4290422438



4294965753



4288646028



4286935666



4285290842



4283646530



4282133548



4280686360



4279238656



4278190080

 4292264385

 4292264385

 4292258988

 4292269782

 4292253334

 4292275436

 4292247937

 4292280319

 4292242283

 4292236886

 4292231489

 4292225835

 4292220438

 4292214784

Harmonies

Analogous

The Analogous color harmony consists of three colors that are next to each other on the color wheel.



4292067784



4292264385



4292133563

Triad

The Triadic color harmony groups three colors that are evenly spaced from another and form a triangle on the color wheel.



4292264385



4290693564



4290562004

Complementary

The Complementary color scheme is a pair of colors which are on the opposite of each other on the color wheel.



4292264385



4290893526

Split Complementary

Split-complementary colors differ from the complementary color scheme. The scheme consists of three colors, the original color and two neighbors of the complement color.



4290169297



4292264385



4290235075

Square

The Square scheme is like the rectangle color scheme, but the four colors are evenly spaced on the color wheel.



4292264385



4291282872



4290038474



4291085779

Rectangle

The Rectangle color scheme consists of four colors that form a rectangle on the color wheel.



4292264385



4291937464



4290038474



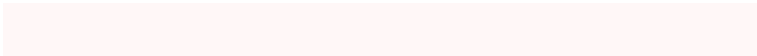
4290365651

Sweetspot

The Sweet Spot groups the original color and five complimentary colors.



4292264385



4294965239



4292264406



4286610042



4278190080



4286611584

Same Dimension

The Same Dimension uses a secret algorithm to generate beautiful new colors.



4292264385



4294959328



4292266945



4285227104



4289396736



4281008128

Inverse Universe

The Inverse Universe completely reimagines the original color for something new.



4290893526



4292935679



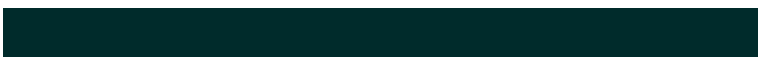
4290890710



4284509035



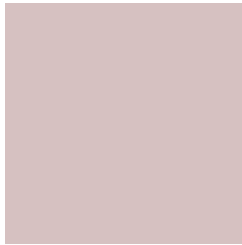
4278234027



4278201131

Previews

White Background



This preview shows how the Android color 4292264385 looks on a white background.

Color Contrast Check

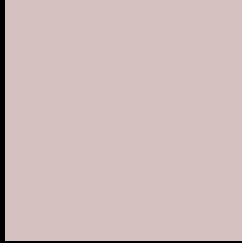
Large Text (above 18pt) WCAG AA × Fail

Any Text WCAG AA × Fail

Large Text (above 18pt) WCAG AAA × Fail

Any Text WCAG AAA × Fail

Black Background



This preview shows how the Android color 4292264385 looks on a black background.

Color Contrast Check

Large Text (above 18pt) WCAG AA ✓ Pass

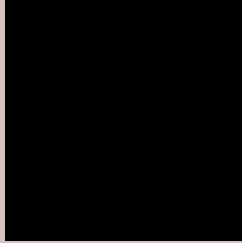
Any Text WCAG AA ✓ Pass

Large Text (above 18pt) WCAG AAA ✓ Pass

Any Text WCAG AAA ✓ Pass

If you want to check with other color combinations, try the [Color Contrast Checker](#).

Android 4292264385 Background



This preview shows how black text looks on a background with the Android color 4292264385.



This preview shows how white text looks on a background with the Android color 4292264385.

Color Blindness Simulation

Color vision deficiency is a very complex topic, and I could not describe the different causes any better than Wikipedia does, so if you want to learn more, you should check out their [article about color blindness](#).


Dichromacy



Original Color
4292264385

Protanopia
4291478979

Deuteranopia
4292591553



Tritanopia
4292394958

Trichromacy



Original Color

4292264385

Protanomaly

4291740866

Deuteranomaly

4292460737

Tritanomaly

4292329673

Monochromacy



Original Color

4292264385

Achromatopsia

4291282887

Achromatomaly

4291610053

CSS Examples

Text

The CSS property to change the color of the text to Android 4292264385 is called "color". The color property can be set on classes, ids or directly on the HTML element.

This example shows how text in the color `rgb(214, 193, 193)` looks like.

```
.text, #text, p{  
    color:rgb(214, 193, 193)  
}
```

If you want to add a text shadow in that color use the text-shadow property, you can generate a text shadow directly with our [CSS Text Shadow Generator](#).

Here you see how black text with a 4 pixel rgb(214, 193, 193) colored shadow looks like.

```
.shadow{ text-shadow: 4px 4px 2px rgb(214, 193, 193) }
```

Border

The CSS property to change the border of an element to Android 4292264385 is called "border". The border property can be set on classes, ids or directly on the HTML element.

This example shows the color as border, it can be applied via the CSS property "border" or "border-color".

```
.border, #border, table{ border:4px solid rgb(214, 193, 193) }
```

If only the border color should be changed use the property `border-color`.

```
.border{ border-color:rgb(214, 193, 193) }
```

If you want to add a box shadow in that color use:

Here you see how a box with a 4 pixel `rgb(214, 193, 193)` colored shadow looks like.

```
.boxshadow{ -moz-box-shadow:4px 4px 4px  
4px rgb(214, 193, 193); -webkit-box-  
shadow:4px 4px 4px 4px rgb(214, 193, 193);  
box-shadow:4px 4px 4px 4px rgb(214, 193,  
193) }
```

Background

The CSS property to change the background color of an element to Android 4292264385 is called "background". The background property can be set on classes, ids or directly on the HTML element.

```
.background, #background, body{  
background: rgb(214, 193, 193) }
```

If only the background color should be changed can be used:

```
.background{ background-color: rgb(214,  
193, 193) }
```

This example shows the color as background, it is applied via the CSS property "background".

To optimize and compress your CSS code, you can use our [online CSS compressor and optimizer](#) based on csstidy. If you want to create a linear or radial gradient as background or border, check our [CSS Gradient Generator](#).

Hey! You found this booklet interesting? Support Converting Colors with the new Membership Option!

The pro membership hides all ads, plus gives you double the colors in the color bucket, and more awesome pro features!

[Learn more, Memberships starting at \\$2.50/m!](#)

**Follow me
on Twitter!**

@ConvertingColor