

# Converting Colors

Android(4292264642)

Have a look what the booklet for  
Android(4292264642) contains.

<b>Android(4292264642)</b> .....	3
<b><i>Conversions</i></b> .....	4
<b><i>Details</i></b> .....	6
<b><i>Harmonies</i></b> .....	11
<b><i>Previews</i></b> .....	23
<b><i>Color Blindness Simulation</i></b> .....	26
<b><i>CSS Examples</i></b> .....	29

# **Color**

**Android(4292264642)**

# Conversions

## Conversions Part 1

Format	Color
Hex	D6C2C2
RGB	214, 194, 194
RGB Percent	84%, 76%, 76%
CMY	0.1608, 0.2392, 0.2392
CMYK	0.00, 0.09, 0.09, 0.16
HSL	0°, 20%, 80%
HSV	0°, 9%, 84%
XYZ	56.7609, 56.7748, 59.0059
YIQ	199.9800, 11.9200, 4.2400

# Conversions

## Conversions Part 2

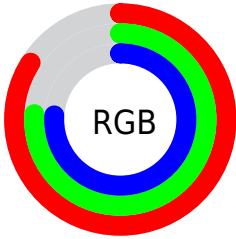
Format	Color
R <sub>Y</sub> B	214, 194, 194
Decimal	14074562
CIE Lab	80.05, 7.04, 2.55
CIE LCh	80, 7.484, 19.923
Yxy	56.7748, 0.3290, 0.3290
Android (android.graphics.Color)	4292264642 (0xFFD6C2C2)
YUV	199.9800, -2.9481, 12.2955
Hunter-Lab	75.3490, 2.6045, 6.3142

# Details

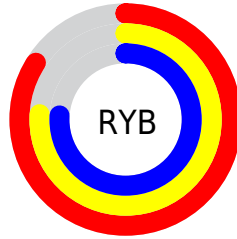
The Android color `4292264642` is a light color, and the websafe version is hex `CCCCCC`. A complement of this color would be `4290959062`, and the grayscale version is `4291348680`.

A 20% lighter version of the original color is `4294966010`, and `4288646284` is the 20% darker color. If you saturate the color by 10%, you get `4292259245`, and if you desaturate by 10%, it is `4292270039`.

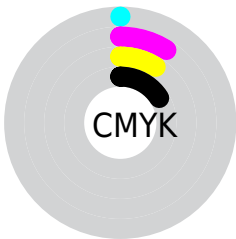
# Distribution



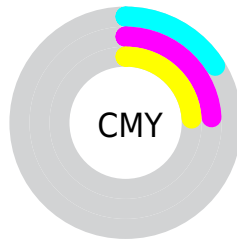
- Red (84%)
- Green (76%)
- Blue (76%)



- Red (84%)
- Yellow (76%)
- Blue (76%)



- Cyan (0%)
- Magenta (9%)
- Yellow (9%)
- Black (16%)



- Cyan (16%)
- Magenta (24%)
- Yellow (24%)

# Brightness & Saturation Gradients

These gradients show how the Android color 4292264642 changes by changing the brightness by 10 percent. The first figure shows a shift by +10% for each color and the second figure -10%.

Similar to the brightness gradients but the following saturation gradients show a change of the Android color 4292264642 by changing the saturation by 10% instead.





4292264642



4292264642

4294967295



4290422695



4294966010



4288646284



4286935923



4285291098



4283646787



4282133805



4280686616



4279304192



4278190080

 4292264642

 4292264642

 4292259245

 4292270039

 4292253591

 4292275693

 4292248194

 4292280319

 4292242540

 4292237143

 4292231746

 4292226092

 4292220695

 4292215041

# Harmonies

## Analogous

The Analogous color harmony consists of three colors that are next to each other on the color wheel.



4292133577



4292264642



4292133820

# Triad

The Triadic color harmony groups three colors that are evenly spaced from another and form a triangle on the color wheel.



4292264642



4290759101



4290627796

# Complementary

The Complementary color scheme is a pair of colors which are on the opposite of each other on the color wheel.



4292264642



4290959062

# Split Complementary

Split-complementary colors differ from the complementary color scheme. The scheme consists of three colors, the original color and two neighbors of the complement color.



4290235089



4292264642



4290366404

# Square

The Square scheme is like the rectangle color scheme, but the four colors are evenly spaced on the color wheel.



4292264642



4291282873



4290169803



4291151316

# Rectangle

The Rectangle color scheme consists of four colors that form a rectangle on the color wheel.



4292264642



4291937466



4290169803



4290496979



# Sweetspot

The Sweet Spot groups the original color and five complimentary colors.



4292264642



4294965239



4292264662



4286610042



4278190080



4286611584



# Same Dimension

The Same Dimension uses a secret algorithm to generate beautiful new colors.



4292264642



4294960099



4292267202



4285227104



4289396736



4281008128

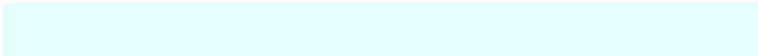


# Inverse Universe

The Inverse Universe completely reimagines the original color for something new.



4290959062



4293132287



4290956502



4284509035



4278234027

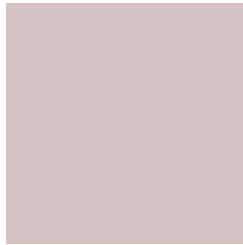


4278201131



# Previews

## White Background



This preview shows how the Android color 4292264642 looks on a white background.

## Color Contrast Check

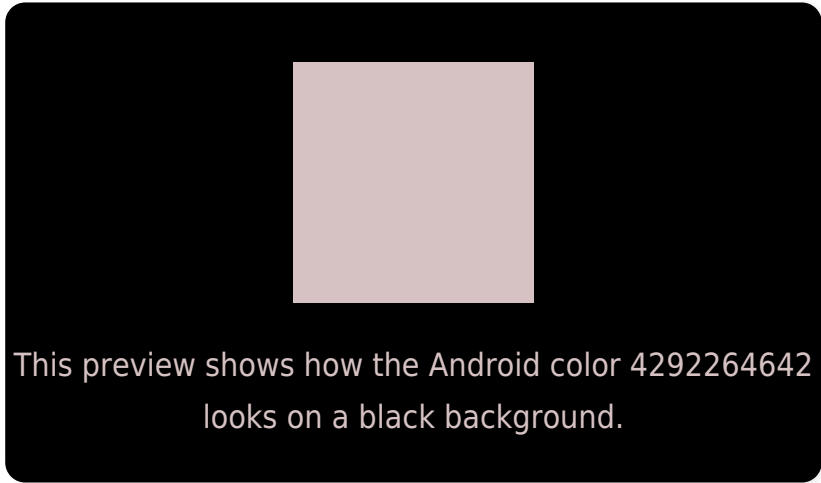
Large Text (above 18pt) WCAG AA × Fail

Any Text WCAG AA × Fail

Large Text (above 18pt) WCAG AAA × Fail

Any Text WCAG AAA × Fail

# Black Background



## Color Contrast Check

Large Text (above 18pt) WCAG AA ✓ Pass

Any Text WCAG AA ✓ Pass

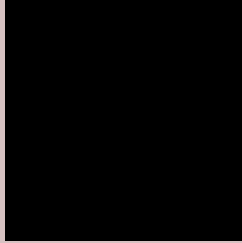
Large Text (above 18pt) WCAG AAA ✓ Pass

Any Text WCAG AAA ✓ Pass

If you want to check with other color combinations, try the [Color Contrast Checker](#).



# Android 4292264642 Background



This preview shows how black text looks on a background with the Android color 4292264642.



This preview shows how white text looks on a background with the Android color 4292264642.

# Color Blindness Simulation

Color vision deficiency is a very complex topic, and I could not describe the different causes any better than Wikipedia does, so if you want to learn more, you should check out their [article about color blindness](#).

## Dichromacy

	<b>Original Color</b> 4292264642
	<b>Protanopia</b> 4291544772
	<b>Deuteranopia</b> 4292591810



# Trichromacy



**Original Color**

4292264642

**Protanomaly**

4291806659

**Deuteranomaly**

4292460994

**Tritanomaly**

4292329930

# Monochromacy



**Original Color**

4292264642

**Achromatopsia**

4291348680

**Achromatomaly**

4291675846

# CSS Examples

## Text

The CSS property to change the color of the text to Android 4292264642 is called "color". The color property can be set on classes, ids or directly on the HTML element.

This example shows how text in the color `rgb(214, 194, 194)` looks like.

```
.text, #text, p{  
    color:rgb(214, 194, 194)  
}
```

If you want to add a text shadow in that color use the text-shadow property, you can generate a text shadow directly with our [CSS Text Shadow Generator](#).

Here you see how black text with a 4 pixel rgb(214, 194, 194) colored shadow looks like.

```
.shadow{ text-shadow: 4px 4px 2px rgb(214, 194, 194) }
```

## Border

The CSS property to change the border of an element to Android 4292264642 is called "border". The border property can be set on classes, ids or directly on the HTML element.

This example shows the color as border, it can be applied via the CSS property "border" or "border-color".

```
.border, #border, table{ border:4px solid rgb(214, 194, 194) }
```

If only the border color should be changed use the property `border-color`.

```
.border{ border-color:rgb(214, 194, 194) }
```

If you want to add a box shadow in that color use:

Here you see how a box with a 4 pixel `rgb(214, 194, 194)` colored shadow looks like.

```
.boxshadow{ -moz-box-shadow:4px 4px 4px  
4px rgb(214, 194, 194); -webkit-box-  
shadow:4px 4px 4px 4px rgb(214, 194, 194);  
box-shadow:4px 4px 4px 4px rgb(214, 194,  
194) }
```

# Background

The CSS property to change the background color of an element to Android 4292264642 is called "background". The background property can be set on classes, ids or directly on the HTML element.

```
.background, #background, body{  
background: rgb(214, 194, 194) }
```

If only the background color should be changed can be used:

```
.background{ background-color: rgb(214,  
194, 194) }
```

This example shows the color as background, it is applied via the CSS property "background".

To optimize and compress your CSS code, you can use our [online CSS compressor and optimizer](#) based on csstidy. If you want to create a linear or radial gradient as background or border, check our [CSS Gradient Generator](#).



Hey! You found this booklet interesting? Support Converting Colors with the new Membership Option!

The pro membership hides all ads, plus gives you double the colors in the color bucket, and more awesome pro features!

**[Learn more, Memberships starting at \\$2.50/m!](#)**

**Follow me  
on Twitter!**

@ConvertingColor