

Converting Colors

Android(4292264644)

Have a look what the booklet for
Android(4292264644) contains.

Android(4292264644)	3
<i>Conversions</i>	4
<i>Details</i>	6
<i>Harmonies</i>	11
<i>Previews</i>	23
<i>Color Blindness Simulation</i>	26
<i>CSS Examples</i>	29

Color

Android(4292264644)

Conversions

Conversions Part 1

Format	Color
Hex	D6C2C4
RGB	214, 194, 196
RGB Percent	84%, 76%, 77%
CMY	0.1608, 0.2392, 0.2314
CMYK	0.00, 0.09, 0.08, 0.16
HSL	354°, 20%, 80%
HSV	354°, 9%, 84%
XYZ	56.9871, 56.8652, 60.1971
YIQ	200.2080, 11.2780, 4.8620

Conversions

Conversions Part 2

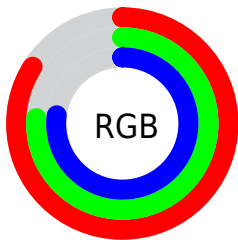
Format	Color
R_{YB}	214, 194, 196
Decimal	14074564
CIE Lab	80.10, 7.37, 1.55
CIE LCh	80, 7.536, 11.856
Yxy	56.8652, 0.3274, 0.3267
Android (android.graphics.Color)	4292264644 (0xFFD6C2C4)
YUV	200.2080, -2.0745, 12.0956
Hunter-Lab	75.4090, 2.9279, 5.4567

Details

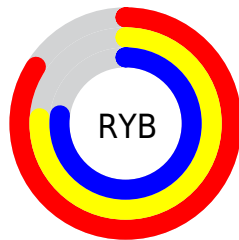
The Android color `4292264644` is a light color, and the websafe version is hex `CCCCCC`. A complement of this color would be `4290959060`, and the grayscale version is `4291348680`.

A 20% lighter version of the original color is `4294966013`, and `4288646286` is the 20% darker color. If you saturate the color by 10%, you get `4292259249`, and if you desaturate by 10%, it is `4292270039`.

Distribution



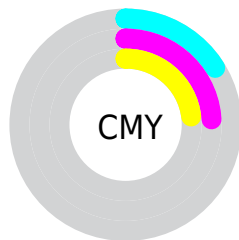
- Red (84%)
- Green (76%)
- Blue (77%)



- Red (84%)
- Yellow (76%)
- Blue (77%)



- Cyan (0%)
- Magenta (9%)
- Yellow (8%)
- Black (16%)



- Cyan (16%)
- Magenta (24%)
- Yellow (23%)

Brightness & Saturation Gradients

These gradients show how the Android color 4292264644 changes by changing the brightness by 10 percent. The first figure shows a shift by +10% for each color and the second figure -10%.

Similar to the brightness gradients but the following saturation gradients show a change of the Android color 4292264644 by changing the saturation by 10% instead.



4292264644



4292264644

4294967295



4290422697



4294966013



4288646286



4286935925



4285291100



4283646789



4282133806



4280686618



4279369728



4278190080

 4292264644

 4292264644

 4292259249

 4292270039

 4292253597

 4292275691

 4292248202

 4292280318

 4292242551

 4292280319

 4292237156

 4292231760

 4292226109

 4292220714

 4292215063

Harmonies

Analogous

The Analogous color harmony consists of three colors that are next to each other on the color wheel.



4292002507



4292264644



4292199358

Triad

The Triadic color harmony groups three colors that are evenly spaced from another and form a triangle on the color wheel.



4292264644



4290890172



4290496980

Complementary

The Complementary color scheme is a pair of colors which are on the opposite of each other on the color wheel.



4292264644



4290959060

Split Complementary

Split-complementary colors differ from the complementary color scheme. The scheme consists of three colors, the original color and two neighbors of the complement color.



4290169552



4292264644



4290431938

Square

The Square scheme is like the rectangle color scheme, but the four colors are evenly spaced on the color wheel.



4292264644



4291479481



4290169801



4291020500

Rectangle

The Rectangle color scheme consists of four colors that form a rectangle on the color wheel.



4292264644



4292068538



4290169801



4290365907

Sweetspot

The Sweet Spot groups the original color and five complimentary colors.



4292264644



4294965240



4292133590



4286610043



4278190080



4286611584

Same Dimension

The Same Dimension uses a secret algorithm to generate beautiful new colors.



4292264644



4294960102



4292266690



4285227105



4289396753



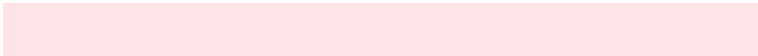
4281008132

Inverse Universe

The Inverse Universe completely reimagines the original color for something new.



4292264644



4294960102



4290957014



4285227105



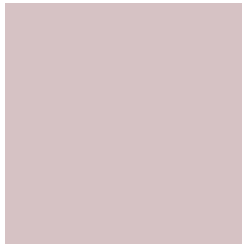
4289396753



4281008132

Previews

White Background



This preview shows how the Android color 4292264644 looks on a white background.

Color Contrast Check

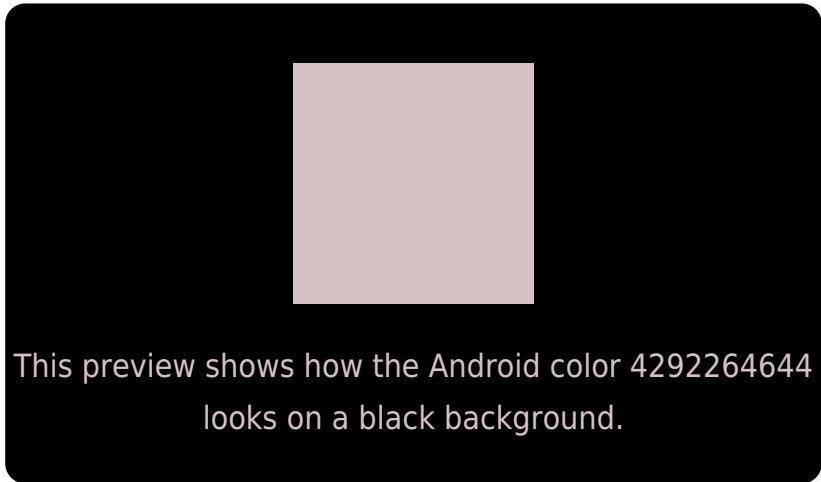
Large Text (above 18pt) WCAG AA × Fail

Any Text WCAG AA × Fail

Large Text (above 18pt) WCAG AAA × Fail

Any Text WCAG AAA × Fail

Black Background



Color Contrast Check

Large Text (above 18pt) WCAG AA ✓ Pass

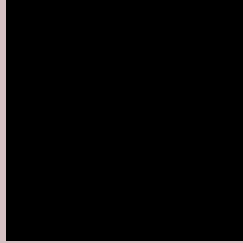
Any Text WCAG AA ✓ Pass

Large Text (above 18pt) WCAG AAA ✓ Pass

Any Text WCAG AAA ✓ Pass

If you want to check with other color combinations, try the [Color Contrast Checker](#).

Android 4292264644 Background



This preview shows how black text looks on a background with the Android color 4292264644.



This preview shows how white text looks on a background with the Android color 4292264644.

Color Blindness Simulation

Color vision deficiency is a very complex topic, and I could not describe the different causes any better than Wikipedia does, so if you want to learn more, you should check out their [article about color blindness](#).

Dichromacy



Original Color
4292264644

Protanopia
4291479238

Deuteranopia
4292591812



Tritanopia
4292395215

Trichromacy



Original Color

4292264644

Protanomaly

4291741125

Deuteranomaly

4292460996

Tritanomaly

4292329931

Monochromacy



Original Color

4292264644

Achromatopsia

4291348680

Achromatomaly

4291675847

CSS Examples

Text

The CSS property to change the color of the text to Android 4292264644 is called "color". The color property can be set on classes, ids or directly on the HTML element.

This example shows how text in the color rgb(214, 194, 196) looks like.

```
.text, #text, p{  
    color:rgb(214, 194, 196)  
}
```

If you want to add a text shadow in that color use the text-shadow property, you can generate a text shadow directly with our [CSS Text Shadow Generator](#).

Here you see how black text with a 4 pixel rgb(214, 194, 196) colored shadow looks like.

```
.shadow{ text-shadow: 4px 4px 2px rgb(214, 194, 196) }
```

Border

The CSS property to change the border of an element to Android 4292264644 is called "border". The border property can be set on classes, ids or directly on the HTML element.

This example shows the color as border, it can be applied via the CSS property "border" or "border-color".

```
.border, #border, table{ border:4px solid rgb(214, 194, 196) }
```

If only the border color should be changed use the property `border-color`.

```
.border{ border-color:rgb(214, 194, 196) }
```

If you want to add a box shadow in that color use:

Here you see how a box with a 4 pixel `rgb(214, 194, 196)` colored shadow looks like.

```
.boxshadow{ -moz-box-shadow:4px 4px 4px  
4px rgb(214, 194, 196); -webkit-box-  
shadow:4px 4px 4px 4px rgb(214, 194, 196);  
box-shadow:4px 4px 4px 4px rgb(214, 194,  
196) }
```

Background

The CSS property to change the background color of an element to Android 4292264644 is called "background". The background property can be set on classes, ids or directly on the HTML element.

```
.background, #background, body{  
background: rgb(214, 194, 196) }
```

If only the background color should be changed can be used:

```
.background{ background-color: rgb(214,  
194, 196) }
```

This example shows the color as background, it is applied via the CSS property "background".

To optimize and compress your CSS code, you can use our [online CSS compressor and optimizer](#) based on csstidy. If you want to create a linear or radial gradient as background or border, check our [CSS Gradient Generator](#).

Hey! You found this booklet interesting? Support Converting Colors with the new Membership Option!

The pro membership hides all ads, plus gives you double the colors in the color bucket, and more awesome pro features!

[Learn more, Memberships starting at \\$2.50/m!](#)

**Follow me
on Twitter!**

@ConvertingColor