

Converting Colors

Android(4292265413)

Have a look what the booklet for
Android(4292265413) contains.

Android(4292265413)	3
<i>Conversions</i>	4
<i>Details</i>	6
<i>Harmonies</i>	11
<i>Previews</i>	23
<i>Color Blindness Simulation</i>	26
<i>CSS Examples</i>	29

Color

Android(4292265413)

Conversions

Conversions Part 1

Format	Color
Hex	D6C5C5
RGB	214, 197, 197
RGB Percent	84%, 77%, 77%
CMY	0.1608, 0.2275, 0.2275
CMYK	0.00, 0.08, 0.08, 0.16
HSL	0°, 17%, 81%
HSV	0°, 8%, 84%
XYZ	57.7759, 58.2599, 61.0235
YIQ	202.0830, 10.1320, 3.6040

Conversions

Conversions Part 2

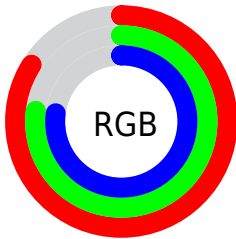
Format	Color
R _Y B	214, 197, 197
Decimal	14075333
CIE Lab	80.88, 5.95, 2.14
CIE LCh	81, 6.326, 19.812
Yxy	58.2599, 0.3263, 0.3290
Android (android.graphics.Color)	4292265413 (0xFFD6C5C5)
YUV	202.0830, -2.5059, 10.4512
Hunter-Lab	76.3281, 1.5396, 6.0280

Details

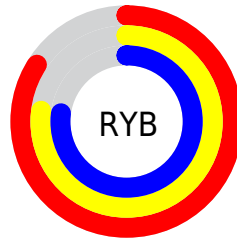
The Android color `4292265413` is a light color, and the websafe version is hex `CCCCCC`. A complement of this color would be `4291155670`, and the grayscale version is `4291480266`.

A 20% lighter version of the original color is `4294967038`, and `4288647055` is the 20% darker color. If you saturate the color by 10%, you get `4292260016`, and if you desaturate by 10%, it is `4292270810`.

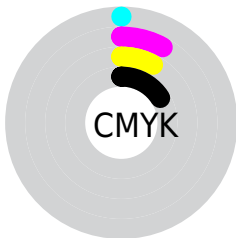
Distribution



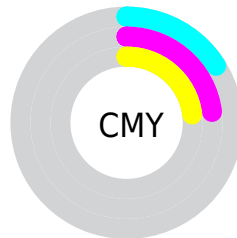
- Red (84%)
- Green (77%)
- Blue (77%)



- Red (84%)
- Yellow (77%)
- Blue (77%)



- Cyan (0%)
- Magenta (8%)
- Yellow (8%)
- Black (16%)



- Cyan (16%)
- Magenta (23%)
- Yellow (23%)

Brightness & Saturation Gradients

These gradients show how the Android color 4292265413 changes by changing the brightness by 10 percent. The first figure shows a shift by +10% for each color and the second figure -10%.

Similar to the brightness gradients but the following saturation gradients show a change of the Android color 4292265413 by changing the saturation by 10% instead.

 4292265413

 4292265413

4294967295

 4290423466

4294967038

 4288647055

 4286936694

 4285291869

 4283647302

 4282134319

 4280687131

 4279369728

 4278190080

 4292265413

 4292265413

 4292260016

 4292270810

 4292254362

 4292276464

 4292248965

 4292280319

 4292243311

 4292237914

 4292232517

 4292226863

 4292221466

 4292215812

Harmonies

Analogous

The Analogous color harmony consists of three colors that are next to each other on the color wheel.



4292134347



4292265413



4292200128

Triad

The Triadic color harmony groups three colors that are evenly spaced from another and form a triangle on the color wheel.



4292265413



4291021761



4290890452

Complementary

The Complementary color scheme is a pair of colors which are on the opposite of each other on the color wheel.



4292265413



4291155670

Split Complementary

Split-complementary colors differ from the complementary color scheme. The scheme consists of three colors, the original color and two neighbors of the complement color.



4290563282



4292265413



4290628806

Square

The Square scheme is like the rectangle color scheme, but the four colors are evenly spaced on the color wheel.



4292265413



4291480254



4290497741



4291348692

Rectangle

The Rectangle color scheme consists of four colors that form a rectangle on the color wheel.



4292265413



4292003774



4290497741



4290759636

Sweetspot

The Sweet Spot groups the original color and five complimentary colors.



4292265413



4294966010



4292265430



4286610813



4278190080



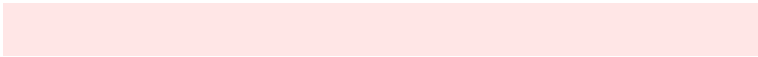
4286611584

Same Dimension

The Same Dimension uses a secret algorithm to generate beautiful new colors.



4292265413



4294960870



4292267717



4285227104



4289396736



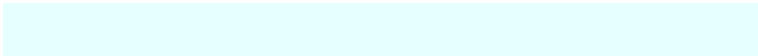
4281008128

Inverse Universe

The Inverse Universe completely reimagines the original color for something new.



4291155670



4293328895



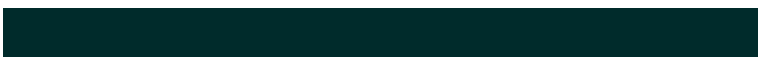
4291153622



4284509035



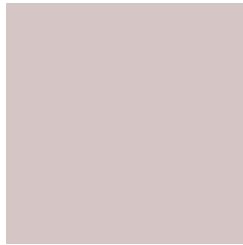
4278234027



4278201131

Previews

White Background



This preview shows how the Android color 4292265413 looks on a white background.

Color Contrast Check

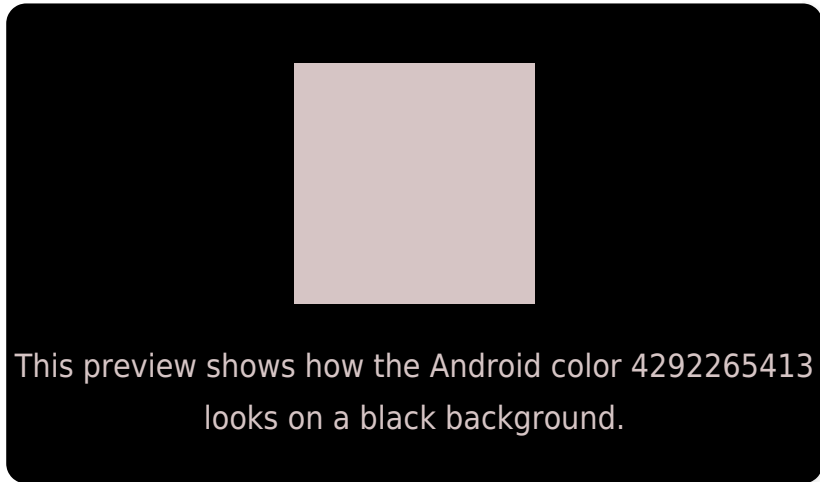
Large Text (above 18pt) WCAG AA × Fail

Any Text WCAG AA × Fail

Large Text (above 18pt) WCAG AAA × Fail

Any Text WCAG AAA × Fail

Black Background



Color Contrast Check

Large Text (above 18pt) WCAG AA ✓ Pass

Any Text WCAG AA ✓ Pass

Large Text (above 18pt) WCAG AAA ✓ Pass

Any Text WCAG AAA ✓ Pass

If you want to check with other color combinations, try the [Color Contrast Checker](#).

Android 4292265413 Background



This preview shows how black text looks on a background with the Android color 4292265413.




This preview shows how white text looks on a background with the Android color 4292265413.

Color Blindness Simulation

Color vision deficiency is a very complex topic, and I could not describe the different causes any better than Wikipedia does, so if you want to learn more, you should check out their [article about color blindness](#).

Dichromacy

	Original Color 4292265413
	Protanopia 4291676359
	Deuteranopia 4292723398



Tritanopia
4292395986

Trichromacy



Original Color
4292265413

Protanomaly
4291872710

Deuteranomaly
4292527046

Tritanomaly
4292330701

Monochromacy



Original Color
4292265413

Achromatopsia
4291480266

Achromatomaly
4291741896

CSS Examples

Text

The CSS property to change the color of the text to Android 4292265413 is called "color". The color property can be set on classes, ids or directly on the HTML element.

This example shows how text in the color `rgb(214, 197, 197)` looks like.

```
.text, #text, p{  
    color:rgb(214, 197, 197)  
}
```

If you want to add a text shadow in that color use the text-shadow property, you can generate a text shadow directly with our [CSS Text Shadow Generator](#).

Here you see how black text with a 4 pixel rgb(214, 197, 197) colored shadow looks like.

```
.shadow{ text-shadow: 4px 4px 2px rgb(214, 197, 197) }
```

Border

The CSS property to change the border of an element to Android 4292265413 is called "border". The border property can be set on classes, ids or directly on the HTML element.

This example shows the color as border, it can be applied via the CSS property "border" or "border-color".

```
.border, #border, table{ border:4px solid rgb(214, 197, 197) }
```

If only the border color should be changed use the property `border-color`.

```
.border{ border-color:rgb(214, 197, 197) }
```

If you want to add a box shadow in that color use:

Here you see how a box with a 4 pixel `rgb(214, 197, 197)` colored shadow looks like.

```
.boxshadow{ -moz-box-shadow:4px 4px 4px  
4px rgb(214, 197, 197); -webkit-box-  
shadow:4px 4px 4px 4px rgb(214, 197, 197);  
box-shadow:4px 4px 4px 4px rgb(214, 197,  
197) }
```

Background

The CSS property to change the background color of an element to Android 4292265413 is called "background". The background property can be set on classes, ids or directly on the HTML element.

```
.background, #background, body{  
background: rgb(214, 197, 197) }
```

If only the background color should be changed can be used:

```
.background{ background-color: rgb(214,  
197, 197) }
```

This example shows the color as background, it is applied via the CSS property "background".

To optimize and compress your CSS code, you can use our [online CSS compressor and optimizer](#) based on csstidy. If you want to create a linear or radial gradient as background or border, check our [CSS Gradient Generator](#).

Hey! You found this booklet interesting? Support Converting Colors with the new Membership Option!

The pro membership hides all ads, plus gives you double the colors in the color bucket, and more awesome pro features!

[Learn more, Memberships starting at \\$2.50/m!](#)

**Follow me
on Twitter!**

@ConvertingColor