

Converting Colors

Android(4292265416)

Have a look what the booklet for
Android(4292265416) contains.

Android(4292265416)	3
<i>Conversions</i>	4
<i>Details</i>	6
<i>Harmonies</i>	11
<i>Previews</i>	23
<i>Color Blindness Simulation</i>	26
<i>CSS Examples</i>	29

Color

Android(4292265416)

Conversions

Conversions Part 1

Format	Color
Hex	D6C5C8
RGB	214, 197, 200
RGB Percent	84%, 77%, 78%
CMY	0.1608, 0.2275, 0.2157
CMYK	0.00, 0.08, 0.07, 0.16
HSL	349°, 17%, 81%
HSV	349°, 8%, 84%
XYZ	58.1231, 58.3988, 62.8523
YIQ	202.4250, 9.1690, 4.5370

Conversions

Conversions Part 2

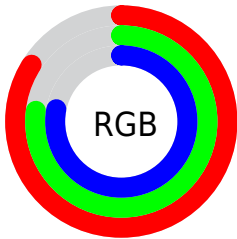
Format	Color
R _Y B	214, 197, 200
Decimal	14075336
CIE Lab	80.96, 6.47, 0.65
CIE LCh	81, 6.499, 5.703
Yxy	58.3988, 0.3240, 0.3256
Android (android.graphics.Color)	4292265416 (0xFFD6C5C8)
YUV	202.4250, -1.1955, 10.1513
Hunter-Lab	76.4191, 2.0308, 4.7292

Details

The Android color `4292265416` is a light color, and the websafe version is hex `CCCCCC`. A complement of this color would be `4291155667`, and the grayscale version is `4291480266`.

A 20% lighter version of the original color is `4294967039`, and `4288647058` is the 20% darker color. If you saturate the color by 10%, you get `4292260022`, and if you desaturate by 10%, it is `4292270810`.

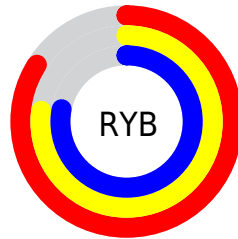
Distribution



Red (84%)

Green (77%)

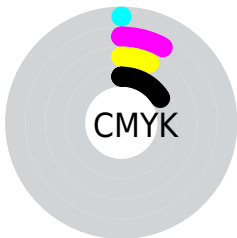
Blue (78%)



Red (84%)

Yellow (77%)

Blue (78%)

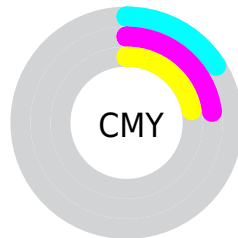


Cyan (0%)

Magenta (8%)

Yellow (7%)

Black (16%)



Cyan (16%)

Magenta (23%)

Yellow (22%)

Brightness & Saturation Gradients

These gradients show how the Android color 4292265416 changes by changing the brightness by 10 percent. The first figure shows a shift by +10% for each color and the second figure -10%.

Similar to the brightness gradients but the following saturation gradients show a change of the Android color 4292265416 by changing the saturation by 10% instead.

 4292265416

 4292265416

4294967295

 4290423469

4294967039

 4288647058

 4286936696

 4285291872

 4283647304

 4282134322

 4280687133

 4279435266

 4278190080

 4292265416

 4292265416

 4292260022

 4292270810

 4292254373

 4292276459

 4292248979

 4292280317

 4292243330

 4292280319

 4292237936

 4292232542

 4292226893

 4292221499

 4292215849

Harmonies

Analogous

The Analogous color harmony consists of three colors that are next to each other on the color wheel.



4292003534



4292265416



4292265666

Triad

The Triadic color harmony groups three colors that are evenly spaced from another and form a triangle on the color wheel.



4292265416



4291218367



4290694100

Complementary

The Complementary color scheme is a pair of colors which are on the opposite of each other on the color wheel.



4292265416



4291155667

Split Complementary

Split-complementary colors differ from the complementary color scheme. The scheme consists of three colors, the original color and two neighbors of the complement color.



4290497744



4292265416



4290759876

Square

The Square scheme is like the rectangle color scheme, but the four colors are evenly spaced on the color wheel.



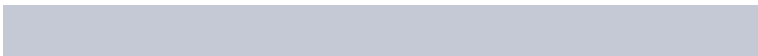
4292265416



4291676605



4290497994



4291086805

Rectangle

The Rectangle color scheme consists of four colors that form a rectangle on the color wheel.



4292265416



4292134591



4290497994



4290563283

Sweetspot

The Sweet Spot groups the original color and five complimentary colors.



4292265416



4294966011



4292068822



4286610813



4278190080



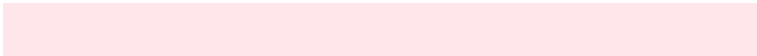
4286611584

Same Dimension

The Same Dimension uses a secret algorithm to generate beautiful new colors.



4292265416



4294960874



4292266693



4285227106



4289396766



4281008136

Inverse Universe

The Inverse Universe completely reimagines the original color for something new.



4292265416



4294960874



4291154390



4285227106



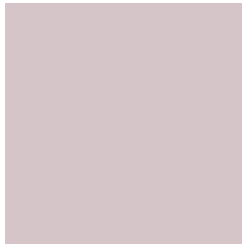
4289396766



4281008136

Previews

White Background



This preview shows how the Android color 4292265416 looks on a white background.

Color Contrast Check

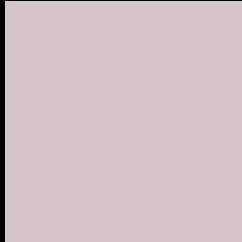
Large Text (above 18pt) WCAG AA × Fail

Any Text WCAG AA × Fail

Large Text (above 18pt) WCAG AAA × Fail

Any Text WCAG AAA × Fail

Black Background



This preview shows how the Android color 4292265416 looks on a black background.

Color Contrast Check

Large Text (above 18pt) WCAG AA ✓ Pass

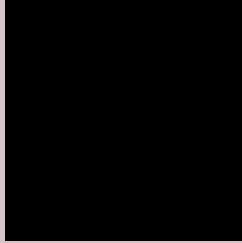
Any Text WCAG AA ✓ Pass

Large Text (above 18pt) WCAG AAA ✓ Pass

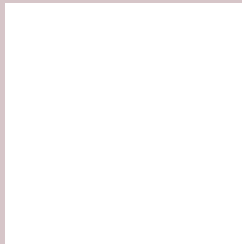
Any Text WCAG AAA ✓ Pass

If you want to check with other color combinations, try the [Color Contrast Checker](#).

Android 4292265416 Background



This preview shows how black text looks on a background with the Android color 4292265416.



This preview shows how white text looks on a background with the Android color 4292265416.

Color Blindness Simulation

Color vision deficiency is a very complex topic, and I could not describe the different causes any better than Wikipedia does, so if you want to learn more, you should check out their [article about color blindness](#).

Dichromacy

	Original Color 4292265416
	Protanopia 4291610826
	Deuteranopia 4292723656

Trichromacy



Original Color
4292265416

Protanomaly
4291872713

Deuteranomaly
4292527304

Tritanomaly
4292330703

Monochromacy



Original Color
4292265416

Achromatopsia
4291480266

Achromatomaly
4291741897

CSS Examples

Text

The CSS property to change the color of the text to Android 4292265416 is called "color". The color property can be set on classes, ids or directly on the HTML element.

This example shows how text in the color `rgb(214, 197, 200)` looks like.

```
.text, #text, p{  
    color:rgb(214, 197, 200)  
}
```

If you want to add a text shadow in that color use the text-shadow property, you can generate a text shadow directly with our [CSS Text Shadow Generator](#).

Here you see how black text with a 4 pixel rgb(214, 197, 200) colored shadow looks like.

```
.shadow{ text-shadow: 4px 4px 2px rgb(214, 197, 200) }
```

Border

The CSS property to change the border of an element to Android 4292265416 is called "border". The border property can be set on classes, ids or directly on the HTML element.

This example shows the color as border, it can be applied via the CSS property "border" or "border-color".

```
.border, #border, table{ border:4px solid rgb(214, 197, 200) }
```

If only the border color should be changed use the property `border-color`.

```
.border{ border-color:rgb(214, 197, 200) }
```

If you want to add a box shadow in that color use:

Here you see how a box with a 4 pixel `rgb(214, 197, 200)` colored shadow looks like.

```
.boxshadow{ -moz-box-shadow:4px 4px 4px  
4px rgb(214, 197, 200); -webkit-box-  
shadow:4px 4px 4px 4px rgb(214, 197, 200);  
box-shadow:4px 4px 4px 4px rgb(214, 197,  
200) }
```

Background

The CSS property to change the background color of an element to Android 4292265416 is called "background". The background property can be set on classes, ids or directly on the HTML element.

```
.background, #background, body{  
background: rgb(214, 197, 200) }
```

If only the background color should be changed can be used:

```
.background{ background-color: rgb(214,  
197, 200) }
```

This example shows the color as background, it is applied via the CSS property "background".

To optimize and compress your CSS code, you can use our [online CSS compressor and optimizer](#) based on csstidy. If you want to create a linear or radial gradient as background or border, check our [CSS Gradient Generator](#).

Hey! You found this booklet interesting? Support Converting Colors with the new Membership Option!

The pro membership hides all ads, plus gives you double the colors in the color bucket, and more awesome pro features!

[Learn more, Memberships starting at \\$2.50/m!](#)

**Follow me
on Twitter!**

@ConvertingColor