

# Converting Colors

Android(4292296058)

Have a look what the booklet for  
Android(4292296058) contains.

<b>Android(4292296058)</b> .....	3
<b><i>Conversions</i></b> .....	4
<b><i>Details</i></b> .....	6
<b><i>Harmonies</i></b> .....	11
<b><i>Previews</i></b> .....	23
<b><i>Color Blindness Simulation</i></b> .....	26
<b><i>CSS Examples</i></b> .....	29

# Color

**Android(4292296058)**

# Conversions

## Conversions Part 1

<b>Format</b>	<b>Color</b>
Hex	D73D7A
RGB	215, 61, 122
RGB Percent	84%, 24%, 48%
CMY	0.1569, 0.7608, 0.5216
CMYK	0.00, 0.72, 0.43, 0.16
HSL	336°, 66%, 54%
HSV	336°, 72%, 84%
XYZ	33.2059, 19.1897, 20.3662
YIQ	114.0000, 72.2030, 51.6190

# Conversions

## Conversions Part 2

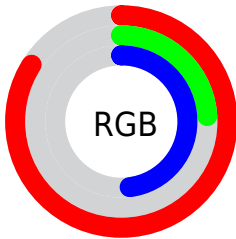
<b>Format</b>	<b>Color</b>
<b>R<sub>YB</sub></b>	215, 61, 122
Decimal	14105978
CIE <sub>Lab</sub>	50.91, 63.75, 0.98
CIE <sub>LCh</sub>	51, 63.760, 0.881
Yxy	19.1897, 0.4564, 0.2637
Android (android.graphics.Color)	4292296058 (0xFFD73D7A)
YUV	114.0000, 3.9440, 88.5770
Hunter-Lab	43.8061, 58.6462, 3.0993

# Details

The Android color **4292296058** is a dark color, and the websafe version is hex **CC3366**. The color can be described as dark muted rose. A complement of this color would be **4282242970**, and the grayscale version is **4285690482**.

A 20% lighter version of the original color is **4294932654**, and **4288348234** is the 20% darker color. If you saturate the color by 10%, you get **4292290669**, and if you desaturate by 10%, it is **4292301703**.

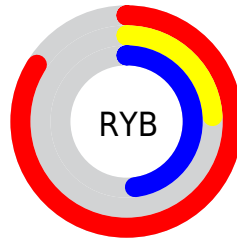
# Distribution



Red (84%)

Green (24%)

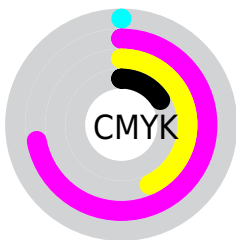
Blue (48%)



Red (84%)

Yellow (24%)

Blue (48%)

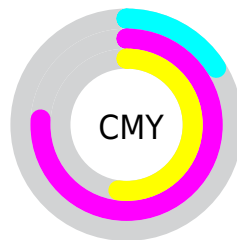


Cyan (0%)

Magenta (72%)

Yellow (43%)

Black (16%)



Cyan (16%)

Magenta (76%)

Yellow (52%)

# Brightness & Saturation Gradients

These gradients show how the Android color 4292296058 changes by changing the brightness by 10 percent. The first figure shows a shift by +10% for each color and the second figure -10%.

Similar to the brightness gradients but the following saturation gradients show a change of the Android color 4292296058 by changing the saturation by 10% instead.



 4292296058

 4292296058

4294967295

 4290320481

 4294932654

 4288348234

 4294939850

 4286382131

 4294947302

 4284481567

 4294954751

 4282777604

 4294962431

 4280680449

 4278190080

 4292296058

 4292296058

 4292290669

 4292301703

 4292285024

 4292307092

 4292280405

 4292312737

 4292318126

 4292323771

 4292329160

 4292334805

 4292340194

 4292345839

# Harmonies

## Analogous

The Analogous color harmony consists of three colors that are next to each other on the color wheel.



4290465711



4292296058



4292167749

# Triad

The Triadic color harmony groups three colors that are evenly spaced from another and form a triangle on the color wheel.



4292296058



4284122624



4278226136

# Complementary

The Complementary color scheme is a pair of colors which are on the opposite of each other on the color wheel.



4292296058



4282242970

# Split Complementary

Split-complementary colors differ from the complementary color scheme. The scheme consists of three colors, the original color and two neighbors of the complement color.



4278227376



4292296058



4278226497

# Square

The Square scheme is like the rectangle color scheme, but the four colors are evenly spaced on the color wheel.



4292296058



4287657728



4278227577



4278222823

# Rectangle

The Rectangle color scheme consists of four colors that form a rectangle on the color wheel.



4292296058



4291123491



4278227577



4278226893



# Sweetspot

The Sweet Spot groups the original color and five complimentary colors.



4292296058



4294953439



4288232919



4286603372



4278190080



4286611584



# Same Dimension

The Same Dimension uses a secret algorithm to generate beautiful new colors.



4292296058



4294911099



4292299837



4285227109



4289396804



4281008145



# Inverse Universe

The Inverse Universe completely reimagines the original color for something new.



4292296058



4294911099



4282239191



4285227109



4289396804

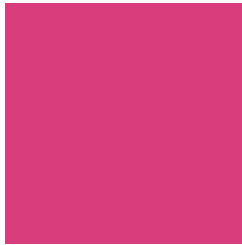


4281008145



# Previews

## White Background



This preview shows how the Android color 4292296058 looks on a white background.

## Color Contrast Check

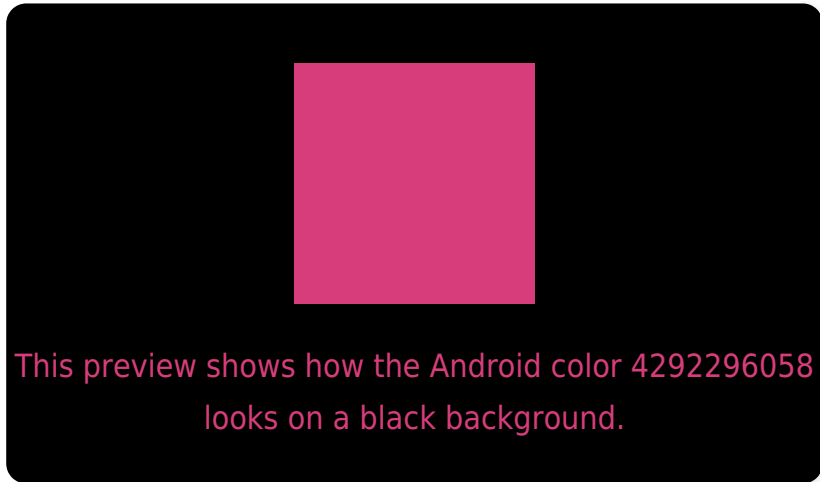
Large Text (above 18pt) WCAG AA ✓ Pass

Any Text WCAG AA ✗ Fail

Large Text (above 18pt) WCAG AAA ✗ Fail

Any Text WCAG AAA ✗ Fail

# Black Background



## Color Contrast Check

Large Text (above 18pt) WCAG AA ✓ Pass

Any Text WCAG AA ✓ Pass

Large Text (above 18pt) WCAG AAA ✓ Pass

Any Text WCAG AAA × Fail

If you want to check with other color combinations, try the [Color Contrast Checker](#).



# Android 4292296058 Background



This preview shows how black text looks on a background with the Android color 4292296058.



This preview shows how white text looks on a background with the Android color 4292296058.

# Color Blindness Simulation

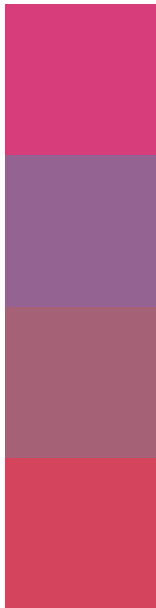
Color vision deficiency is a very complex topic, and I could not describe the different causes any better than Wikipedia does, so if you want to learn more, you should check out their [article about color blindness](#).

## Dichromacy





# Trichromacy



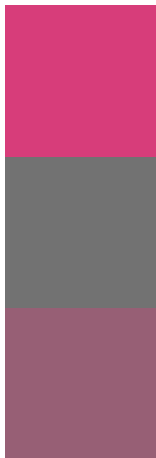
**Original Color**  
4292296058

**Protanomaly**  
4287980433

**Deuteranomaly**  
4289028469

**Tritanomaly**  
4292166749

# Monochromacy



**Original Color**  
4292296058

**Achromatopsia**  
4285690482

**Achromatomaly**  
4288110453

# CSS Examples

## Text

The CSS property to change the color of the text to Android 4292296058 is called "color". The color property can be set on classes, ids or directly on the HTML element.

This example shows how text in the color `rgb(215, 61, 122)` looks like.

```
.text, #text, p{  
    color:rgb(215, 61, 122)  
}
```

If you want to add a text shadow in that color use the text-shadow property, you can generate a text shadow directly with our [CSS Text Shadow Generator](#).

Here you see how black text with a 4 pixel rgb(215, 61, 122) colored shadow looks like.

```
.shadow{ text-shadow: 4px 4px 2px rgb(215, 61, 122) }
```

## Border

The CSS property to change the border of an element to Android 4292296058 is called "border". The border property can be set on classes, ids or directly on the HTML element.

This example shows the color as border, it can be applied via the CSS property "border" or "border-color".

```
.border, #border, table{ border:4px solid rgb(215, 61, 122) }
```

If only the border color should be changed use the property `border-color`.

```
.border{ border-color:rgb(215, 61, 122) }
```

If you want to add a box shadow in that color use:

Here you see how a box with a 4 pixel `rgb(215, 61, 122)` colored shadow looks like.

```
.boxshadow{ -moz-box-shadow:4px 4px 4px  
4px rgb(215, 61, 122); -webkit-box-  
shadow:4px 4px 4px 4px rgb(215, 61, 122);  
box-shadow:4px 4px 4px 4px rgb(215, 61,  
122) }
```

# Background

The CSS property to change the background color of an element to Android 4292296058 is called "background". The background property can be set on classes, ids or directly on the HTML element.

```
.background, #background, body{  
background: rgb(215, 61, 122) }
```

If only the background color should be changed can be used:

```
.background{ background-color: rgb(215, 61,  
122) }
```

This example shows the color as background, it is applied via the CSS property "background".

To optimize and compress your CSS code, you can use our [online CSS compressor and optimizer](#) based on csstidy. If you want to create a linear or radial gradient as background or border, check our [CSS Gradient Generator](#).



Hey! You found this booklet interesting? Support Converting Colors with the new Membership Option!

The pro membership hides all ads, plus gives you double the colors in the color bucket, and more awesome pro features!

**[Learn more, Memberships starting at \\$2.50/m!](#)**

**Follow me  
on Twitter!**

@ConvertingColor