

# Converting Colors

Android(4292318108)

Have a look what the booklet for  
Android(4292318108) contains.

<b>Android(4292318108)</b> .....	3
<i><b>Conversions</b></i> .....	4
<i><b>Details</b></i> .....	6
<i><b>Harmonies</b></i> .....	11
<i><b>Previews</b></i> .....	23
<i><b>Color Blindness Simulation</b></i> .....	26
<i><b>CSS Examples</b></i> .....	29

# **Color**

**Android(4292318108)**

# Conversions

## Conversions Part 1

Format	Color
Hex	D7939C
RGB	215, 147, 156
RGB Percent	84%, 58%, 61%
CMY	0.1569, 0.4235, 0.3882
CMYK	0.00, 0.32, 0.27, 0.16
HSL	352°, 46%, 71%
HSV	352°, 32%, 84%
XYZ	44.4588, 37.7148, 36.3889
YIQ	168.3580, 37.6390, 17.2150

# Conversions

## Conversions Part 2

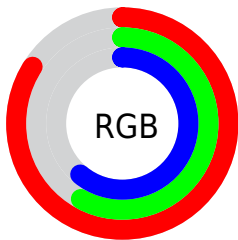
Format	Color
R <sub>Y</sub> B	215, 147, 156
Decimal	14128028
CIE Lab	67.81, 26.88, 5.71
CIE LCh	68, 27.479, 11.987
Yxy	37.7148, 0.3750, 0.3181
Android (android.graphics.Color)	4292318108 (0xFFD7939C)
YUV	168.3580, -6.0925, 40.9050
Hunter-Lab	61.4124, 21.7514, 7.8573

# Details

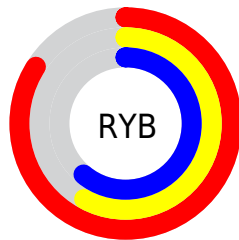
The Android color `4292318108` is a light color, and the websafe version is hex `CC9999`. A complement of this color would be `4287879118`, and the grayscale version is `4289243304`.

A 20% lighter version of the original color is `4294953682`, and `4288634985` is the 20% darker color. If you saturate the color by 10%, you get `4292312713`, and if you desaturate by 10%, it is `4292323759`.

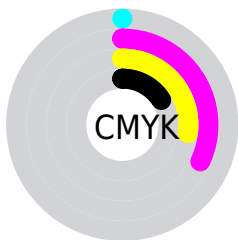
# Distribution



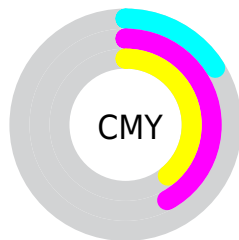
- Red (84%)
- Green (58%)
- Blue (61%)



- Red (84%)
- Yellow (58%)
- Blue (61%)



- Cyan (0%)
- Magenta (32%)
- Yellow (27%)
- Black (16%)



- Cyan (16%)
- Magenta (42%)
- Yellow (39%)

# Brightness & Saturation Gradients

These gradients show how the Android color 4292318108 changes by changing the brightness by 10 percent. The first figure shows a shift by +10% for each color and the second figure -10%.

Similar to the brightness gradients but the following saturation gradients show a change of the Android color 4292318108 by changing the saturation by 10% instead.



 4292318108

 4292318108

4294967295

 4290476418

 4294953682


 4288634985

 4294960879

 4286859089

 4285083706

 4283373604

 4281729295

 4280221697

 4278190080

 4292318108

 4292318108

 4292312713

 4292323759

 4292307063

 4292329153

 4292301412

 4292334548

 4292296017

 4292340199

 4292290623

 4292345849

 4292284972

 4292345855

 4292280348

# Harmonies

## Analogous

The Analogous color harmony consists of three colors that are next to each other on the color wheel.



4291663285



4292318108



4292056965

# Triad

The Triadic color harmony groups three colors that are evenly spaced from another and form a triangle on the color wheel.



4292318108



4287737472



4285639892

# Complementary

The Complementary color scheme is a pair of colors which are on the opposite of each other on the color wheel.



4292318108



4287879118

# Split Complementary

Split-complementary colors differ from the complementary color scheme. The scheme consists of three colors, the original color and two neighbors of the complement color.



4284133829



4292318108



4285903509

# Square

The Square scheme is like the rectangle color scheme, but the four colors are evenly spaced on the color wheel.



4292318108



4289570676



4284396463



4287931605

# Rectangle

The Rectangle color scheme consists of four colors that form a rectangle on the color wheel.



4292318108



4291468410



4284396463



4284985040



# Sweetspot

The Sweet Spot groups the original color and five complimentary colors.



4292318108



4294961387



4291728343



4286607731



4278190080



4286611584



# Same Dimension

The Same Dimension uses a secret algorithm to generate beautiful new colors.



4292318108



4294942379



4292324499



4285227106



4289396759



4281008134



# Inverse Universe

The Inverse Universe completely reimagines the original color for something new.



4292318108



4294942379



4287872727



4285227106



4289396759



4281008134



# Previews

## White Background



This preview shows how the Android color 4292318108 looks on a white background.

## Color Contrast Check

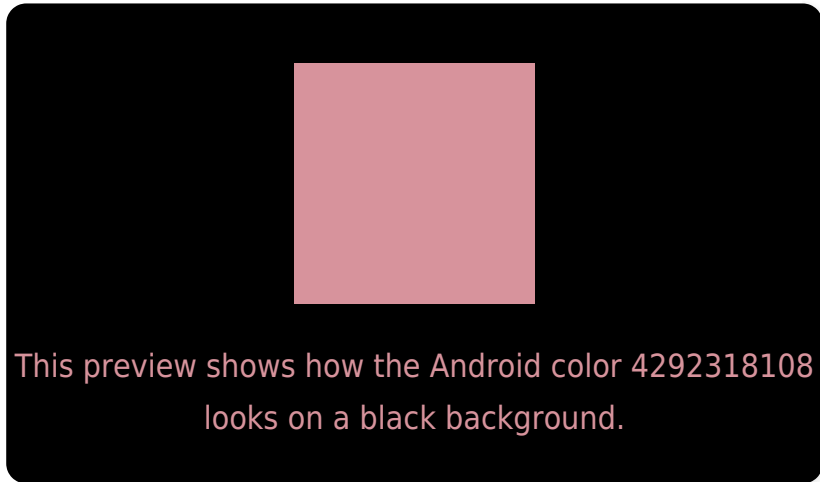
Large Text (above 18pt) WCAG AA × Fail

Any Text WCAG AA × Fail

Large Text (above 18pt) WCAG AAA × Fail

Any Text WCAG AAA × Fail

# Black Background



## Color Contrast Check

Large Text (above 18pt) WCAG AA ✓ Pass

Any Text WCAG AA ✓ Pass

Large Text (above 18pt) WCAG AAA ✓ Pass

Any Text WCAG AAA ✓ Pass

If you want to check with other color combinations, try the [Color Contrast Checker](#).



# Android 4292318108 Background



This preview shows how black text looks on a background with the Android color 4292318108.



This preview shows how white text looks on a background with the Android color 4292318108.

# Color Blindness Simulation

Color vision deficiency is a very complex topic, and I could not describe the different causes any better than Wikipedia does, so if you want to learn more, you should check out their [article about color blindness](#).


## Dichromacy



**Original Color**  
4292318108

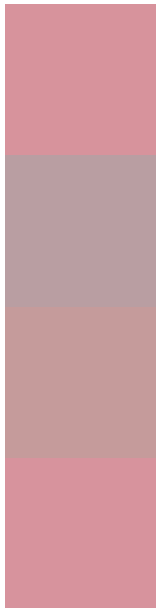
**Protanopia**  
4289242534

**Deuteranopia**  
4290420890



**Tritanopia**  
4292318110

# Trichromacy



**Original Color**  
4292318108

**Protanomaly**  
4290354850

**Deuteranomaly**  
4291140507

**Tritanomaly**  
4292318109

# Monochromacy



**Original Color**  
4292318108

**Achromatopsia**  
4289243304

**Achromatomaly**  
4290355364

# CSS Examples

## Text

The CSS property to change the color of the text to Android 4292318108 is called "color". The color property can be set on classes, ids or directly on the HTML element.

This example shows how text in the color `rgb(215, 147, 156)` looks like.

```
.text, #text, p{  
    color:rgb(215, 147, 156)  
}
```

If you want to add a text shadow in that color use the text-shadow property, you can generate a text shadow directly with our [CSS Text Shadow Generator](#).

Here you see how black text with a 4 pixel rgb(215, 147, 156) colored shadow looks like.

```
.shadow{ text-shadow: 4px 4px 2px rgb(215, 147, 156) }
```

## Border

The CSS property to change the border of an element to Android 4292318108 is called "border". The border property can be set on classes, ids or directly on the HTML element.

This example shows the color as border, it can be applied via the CSS property "border" or "border-color".

```
.border, #border, table{ border:4px solid rgb(215, 147, 156) }
```

If only the border color should be changed use the property `border-color`.

```
.border{ border-color:rgb(215, 147, 156) }
```

If you want to add a box shadow in that color use:

Here you see how a box with a 4 pixel `rgb(215, 147, 156)` colored shadow looks like.

```
.boxshadow{ -moz-box-shadow:4px 4px 4px  
4px rgb(215, 147, 156); -webkit-box-  
shadow:4px 4px 4px 4px rgb(215, 147, 156);  
box-shadow:4px 4px 4px 4px rgb(215, 147,  
156) }
```

# Background

The CSS property to change the background color of an element to Android 4292318108 is called "background". The background property can be set on classes, ids or directly on the HTML element.

```
.background, #background, body{  
background: rgb(215, 147, 156) }
```

If only the background color should be changed can be used:

```
.background{ background-color: rgb(215,  
147, 156) }
```

This example shows the color as background, it is applied via the CSS property "background".

To optimize and compress your CSS code, you can use our [online CSS compressor and optimizer](#) based on csstidy. If you want to create a linear or radial gradient as background or border, check our [CSS Gradient Generator](#).



Hey! You found this booklet interesting? Support Converting Colors with the new Membership Option!

The pro membership hides all ads, plus gives you double the colors in the color bucket, and more awesome pro features!

**[Learn more, Memberships starting at \\$2.50/m!](#)**

**Follow me  
on Twitter!**

@ConvertingColor