

Converting Colors

Android(4292322974)

Have a look what the booklet for
Android(4292322974) contains.

Android(4292322974)	3
<i>Conversions</i>	4
<i>Details</i>	6
<i>Harmonies</i>	11
<i>Previews</i>	23
<i>Color Blindness Simulation</i>	26
<i>CSS Examples</i>	29

Color

Android(4292322974)

Conversions

Conversions Part 1

Format	Color
Hex	D7A69E
RGB	215, 166, 158
RGB Percent	84%, 65%, 62%
CMY	0.1569, 0.3490, 0.3804
CMYK	0.00, 0.23, 0.27, 0.16
HSL	8°, 42%, 73%
HSV	8°, 27%, 84%
XYZ	47.8321, 44.1881, 38.3559
YIQ	179.7390, 31.7720, 7.9000

Conversions

Conversions Part 2

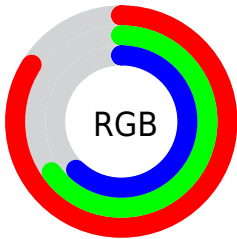
Format	Color
R _Y B	215, 167, 158
Decimal	14132894
CIE Lab	72.35, 16.87, 11.08
CIE LCh	72, 20.187, 33.307
Yxy	44.1881, 0.3669, 0.3389
Android (android.graphics.Color)	4292322974 (0xFFD7A69E)
YUV	179.7390, -10.7173, 30.9239
Hunter-Lab	66.4742, 12.1116, 12.3213

Details

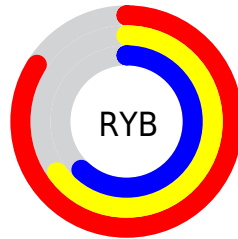
The Android color `4292322974` is a light color, and the websafe version is hex `CC9999`. A complement of this color would be `4288597975`, and the grayscale version is `4290032820`.

A 20% lighter version of the original color is `4294958549`, and `4288639595` is the 20% darker color. If you saturate the color by 10%, you get `4292318345`, and if you desaturate by 10%, it is `4292327604`.

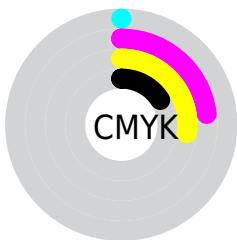
Distribution



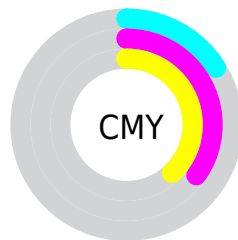
- Red (84%)
- Green (65%)
- Blue (62%)



- Red (84%)
- Yellow (65%)
- Blue (62%)



- Cyan (0%)
- Magenta (23%)
- Yellow (27%)
- Black (16%)



- Cyan (16%)
- Magenta (35%)
- Yellow (38%)

Brightness & Saturation Gradients

These gradients show how the Android color 4292322974 changes by changing the brightness by 10 percent. The first figure shows a shift by +10% for each color and the second figure -10%.

Similar to the brightness gradients but the following saturation gradients show a change of the Android color 4292322974 by changing the saturation by 10% instead.

 4292322974

 4292322974

4294967295

 4290481284

 4294958549

 4288639595

 4294966001

 4286863699

 4285153851

 4283509542

 4281931281

 4280549376

 4278190080

 4292322974

 4292322974

 4292318345

 4292327604

 4292313459

 4292332489

 4292308830

 4292337119

 4292303944

 4292342004

 4292299315

 4292345855

 4292294429

 4292289800

 4292288000

Harmonies

Analogous

The Analogous color harmony consists of three colors that are next to each other on the color wheel.



4292256944



4292322974



4291734417

Triad

The Triadic color harmony groups three colors that are evenly spaced from another and form a triangle on the color wheel.



4292322974



4287937184



4288656086

Complementary

The Complementary color scheme is a pair of colors which are on the opposite of each other on the color wheel.



4292322974



4288597975

Split Complementary

Split-complementary colors differ from the complementary color scheme. The scheme consists of three colors, the original color and two neighbors of the complement color.



4287215826



4292322974



4286889139

Square

The Square scheme is like the rectangle color scheme, but the four colors are evenly spaced on the color wheel.



4292322974



4289312402



4286561221



4290227408

Rectangle

The Rectangle color scheme consists of four colors that form a rectangle on the color wheel.



4292322974



4291080077



4286561221



4288132310

Sweetspot

The Sweet Spot groups the original color and five complimentary colors.



4292322974



4294962667



4292320975



4286608755



4278190080



4286611584

Same Dimension

The Same Dimension uses a secret algorithm to generate beautiful new colors.



4292322974



4294949293



4292330142



4285227616



4289402880



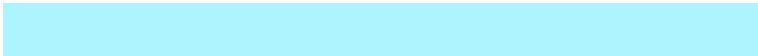
4281009664

Inverse Universe

The Inverse Universe completely reimagines the original color for something new.



4288597975



4289590527



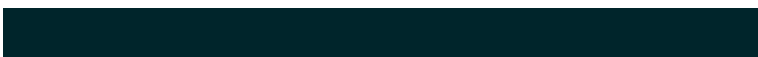
4288590807



4284508779



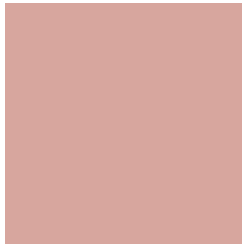
4278227883



4278199595

Previews

White Background



This preview shows how the Android color 4292322974 looks on a white background.

Color Contrast Check

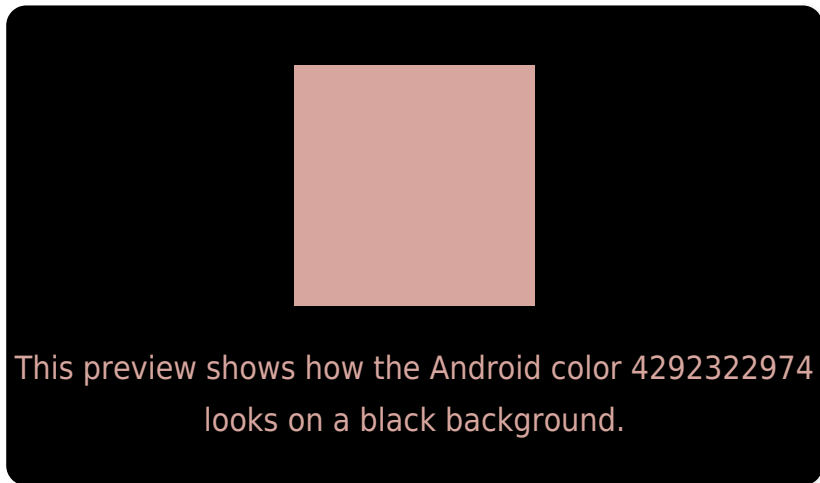
Large Text (above 18pt) WCAG AA × Fail

Any Text WCAG AA × Fail

Large Text (above 18pt) WCAG AAA × Fail

Any Text WCAG AAA × Fail

Black Background



Color Contrast Check

Large Text (above 18pt) WCAG AA ✓ Pass

Any Text WCAG AA ✓ Pass

Large Text (above 18pt) WCAG AAA ✓ Pass

Any Text WCAG AAA ✓ Pass

If you want to check with other color combinations, try the [Color Contrast Checker](#).

Android 4292322974 Background



This preview shows how black text looks on a background with the Android color 4292322974.



This preview shows how white text looks on a background with the Android color 4292322974.

Color Blindness Simulation

Color vision deficiency is a very complex topic, and I could not describe the different causes any better than Wikipedia does, so if you want to learn more, you should check out their [article about color blindness](#).


Dichromacy



Original Color
4292322974

Protanopia
4290294180

Deuteranopia
4291472285



Tritanopia
4292453296

Trichromacy



Original Color

4292322974

Protanomaly

4291014050

Deuteranomaly

4291799453

Tritanomaly

4292388009

Monochromacy



Original Color

4292322974

Achromatopsia

4290032820

Achromatomaly

4290883500

CSS Examples

Text

The CSS property to change the color of the text to Android 4292322974 is called "color". The color property can be set on classes, ids or directly on the HTML element.

This example shows how text in the color `rgb(215, 166, 158)` looks like.

```
.text, #text, p{  
    color:rgb(215, 166, 158)  
}
```

If you want to add a text shadow in that color use the text-shadow property, you can generate a text shadow directly with our [CSS Text Shadow Generator](#).

Here you see how black text with a 4 pixel rgb(215, 166, 158) colored shadow looks like.

```
.shadow{ text-shadow: 4px 4px 2px rgb(215, 166, 158) }
```

Border

The CSS property to change the border of an element to Android 4292322974 is called "border". The border property can be set on classes, ids or directly on the HTML element.

This example shows the color as border, it can be applied via the CSS property "border" or "border-color".

```
.border, #border, table{ border:4px solid rgb(215, 166, 158) }
```

If only the border color should be changed use the property `border-color`.

```
.border{ border-color:rgb(215, 166, 158) }
```

If you want to add a box shadow in that color use:

Here you see how a box with a 4 pixel `rgb(215, 166, 158)` colored shadow looks like.

```
.boxshadow{ -moz-box-shadow:4px 4px 4px  
4px rgb(215, 166, 158); -webkit-box-  
shadow:4px 4px 4px 4px rgb(215, 166, 158);  
box-shadow:4px 4px 4px 4px rgb(215, 166,  
158) }
```

Background

The CSS property to change the background color of an element to Android 4292322974 is called "background". The background property can be set on classes, ids or directly on the HTML element.

```
.background, #background, body{  
background: rgb(215, 166, 158) }
```

If only the background color should be changed can be used:

```
.background{ background-color: rgb(215,  
166, 158) }
```

This example shows the color as background, it is applied via the CSS property "background".

To optimize and compress your CSS code, you can use our [online CSS compressor and optimizer](#) based on csstidy. If you want to create a linear or radial gradient as background or border, check our [CSS Gradient Generator](#).

Hey! You found this booklet interesting? Support Converting Colors with the new Membership Option!

The pro membership hides all ads, plus gives you double the colors in the color bucket, and more awesome pro features!

[Learn more, Memberships starting at \\$2.50/m!](#)

**Follow me
on Twitter!**

@ConvertingColor