

# Converting Colors

Android(4292328893)

Have a look what the booklet for  
Android(4292328893) contains.

<b>Android(4292328893)</b> .....	3
<b><i>Conversions</i></b> .....	4
<b><i>Details</i></b> .....	6
<b><i>Harmonies</i></b> .....	11
<b><i>Previews</i></b> .....	23
<b><i>Color Blindness Simulation</i></b> .....	26
<b><i>CSS Examples</i></b> .....	29

# **Color**

**Android(4292328893)**

# Conversions

## Conversions Part 1

Format	Color
Hex	D7BDBD
RGB	215, 189, 189
RGB Percent	84%, 74%, 74%
CMY	0.1569, 0.2588, 0.2588
CMYK	0.00, 0.12, 0.12, 0.16
HSL	0°, 25%, 79%
HSV	0°, 12%, 84%
XYZ	55.4072, 54.5164, 55.7466
YIQ	196.7740, 15.4960, 5.5120

# Conversions

## Conversions Part 2

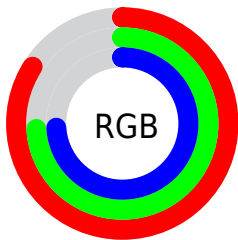
Format	Color
R <sub>Y</sub> B	215, 189, 189
Decimal	14138813
CIE Lab	78.76, 9.23, 3.38
CIE LCh	79, 9.827, 20.143
Yxy	54.5164, 0.3344, 0.3291
Android (android.graphics.Color)	4292328893 (0xFFD7BDBD)
YUV	196.7740, -3.8326, 15.9842
Hunter-Lab	73.8352, 4.7379, 6.9199

# Details

The Android color `4292328893` is a light color, and the websafe version is hex `CCCCCC`. A complement of this color would be `4290631639`, and the grayscale version is `4291151301`.

A 20% lighter version of the original color is `4294964725`, and `4288710792` is the 20% darker color. If you saturate the color by 10%, you get `4292323496`, and if you desaturate by 10%, it is `4292334547`.

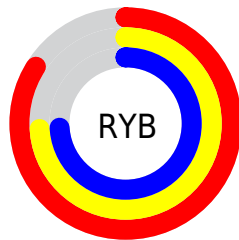
# Distribution



Red (84%)

Green (74%)

Blue (74%)



Red (84%)

Yellow (74%)

Blue (74%)

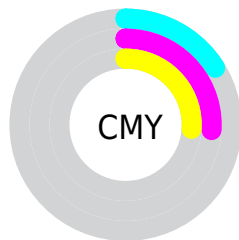


Cyan (0%)

Magenta (12%)

Yellow (12%)

Black (16%)



Cyan (16%)

Magenta (26%)

Yellow (26%)

# Brightness & Saturation Gradients

These gradients show how the Android color 4292328893 changes by changing the brightness by 10 percent. The first figure shows a shift by +10% for each color and the second figure -10%.

Similar to the brightness gradients but the following saturation gradients show a change of the Android color 4292328893 by changing the saturation by 10% instead.



 4292328893

 4292328893

4294967295

 4290486946

 4294964725

 4288710792

 4287000174

 4285290070

 4283711295

 4282132777

 4280685589

 4278845440

 4278190080

 4292328893

 4292328893

 4292323496

 4292334547

 4292317842

 4292339944

 4292312445

 4292345598

 4292306791

 4292345855

 4292301394

 4292295740

 4292290343

 4292284689

 4292280320

# Harmonies

## Analogous

The Analogous color harmony consists of three colors that are next to each other on the color wheel.



4292132294



4292328893



4292198325

# Triad

The Triadic color harmony groups three colors that are evenly spaced from another and form a triangle on the color wheel.



4292328893



4290365367



4290168277

# Complementary

The Complementary color scheme is a pair of colors which are on the opposite of each other on the color wheel.



4292328893



4290631639

# Split Complementary

Split-complementary colors differ from the complementary color scheme. The scheme consists of three colors, the original color and two neighbors of the complement color.



4289644497



4292328893



4289841343

# Square

The Square scheme is like the rectangle color scheme, but the four colors are evenly spaced on the color wheel.



4292328893



4291085490



4289513673



4290888404

# Rectangle

The Rectangle color scheme consists of four colors that form a rectangle on the color wheel.



4292328893



4291870898



4289513673



4289971924



# Sweetspot

The Sweet Spot groups the original color and five complimentary colors.



4292328893



4294964725



4292328919



4286609785



4278190080



4286611584

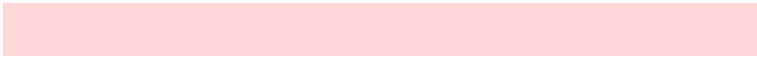


# Same Dimension

The Same Dimension uses a secret algorithm to generate beautiful new colors.



4292328893



4294957529



4292332221



4285227104



4289396736



4281008128



# Inverse Universe

The Inverse Universe completely reimagines the original color for something new.



4290631639



4292476927



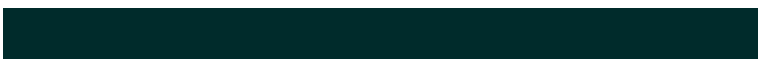
4290628311



4284509035



4278234027

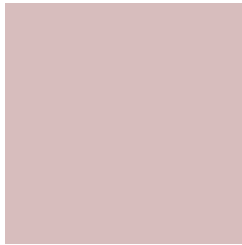


4278201131



# Previews

## White Background



This preview shows how the Android color 4292328893 looks on a white background.

## Color Contrast Check

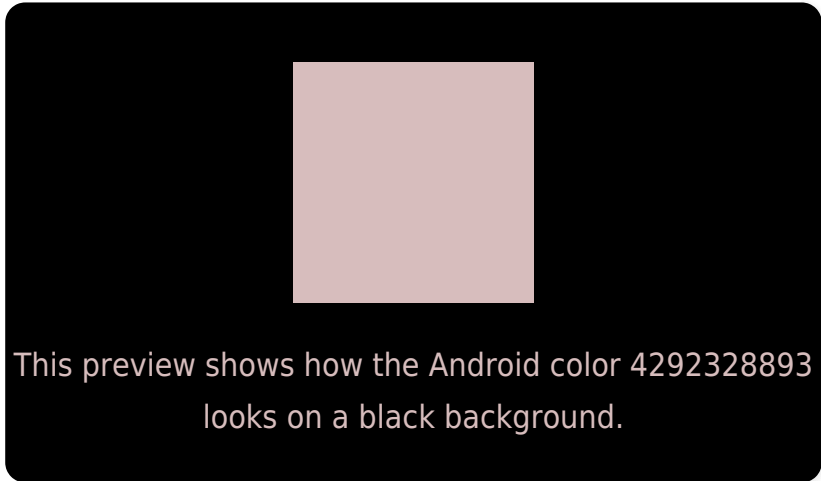
Large Text (above 18pt) WCAG AA × Fail

Any Text WCAG AA × Fail

Large Text (above 18pt) WCAG AAA × Fail

Any Text WCAG AAA × Fail

# Black Background



## Color Contrast Check

Large Text (above 18pt) WCAG AA ✓ Pass

Any Text WCAG AA ✓ Pass

Large Text (above 18pt) WCAG AAA ✓ Pass

Any Text WCAG AAA ✓ Pass

If you want to check with other color combinations, try the [Color Contrast Checker](#).



# Android 4292328893 Background



This preview shows how black text looks on a background with the Android color 4292328893.



This preview shows how white text looks on a background with the Android color 4292328893.

# Color Blindness Simulation

Color vision deficiency is a very complex topic, and I could not describe the different causes any better than Wikipedia does, so if you want to learn more, you should check out their [article about color blindness](#).

## Dichromacy



**Original Color**

4292328893

**Protanopia**

4291281600

**Deuteranopia**

4292394429



**Tritanopia**  
4292459466

# Trichromacy



**Original Color**  
4292328893

**Protanomaly**  
4291674303

**Deuteranomaly**  
4292394429

**Tritanomaly**  
4292394181

# Monochromacy



**Original Color**  
4292328893

**Achromatopsia**  
4291151301

**Achromatomaly**  
4291609282

# CSS Examples

## Text

The CSS property to change the color of the text to Android 4292328893 is called "color". The color property can be set on classes, ids or directly on the HTML element.

This example shows how text in the color `rgb(215, 189, 189)` looks like.

```
.text, #text, p{  
    color:rgb(215, 189, 189)  
}
```

If you want to add a text shadow in that color use the text-shadow property, you can generate a text shadow directly with our [CSS Text Shadow Generator](#).

Here you see how black text with a 4 pixel rgb(215, 189, 189) colored shadow looks like.

```
.shadow{ text-shadow: 4px 4px 2px rgb(215, 189, 189) }
```

## Border

The CSS property to change the border of an element to Android 4292328893 is called "border". The border property can be set on classes, ids or directly on the HTML element.

This example shows the color as border, it can be applied via the CSS property "border" or "border-color".

```
.border, #border, table{ border:4px solid rgb(215, 189, 189) }
```

If only the border color should be changed use the property `border-color`.

```
.border{ border-color:rgb(215, 189, 189) }
```

If you want to add a box shadow in that color use:

Here you see how a box with a 4 pixel `rgb(215, 189, 189)` colored shadow looks like.

```
.boxshadow{ -moz-box-shadow:4px 4px 4px 4px rgb(215, 189, 189); -webkit-box-shadow:4px 4px 4px 4px rgb(215, 189, 189); box-shadow:4px 4px 4px 4px rgb(215, 189, 189) }
```

# Background

The CSS property to change the background color of an element to Android 4292328893 is called "background". The background property can be set on classes, ids or directly on the HTML element.

```
.background, #background, body{  
background: rgb(215, 189, 189) }
```

If only the background color should be changed can be used:

```
.background{ background-color: rgb(215,  
189, 189) }
```

This example shows the color as background, it is applied via the CSS property "background".

To optimize and compress your CSS code, you can use our [online CSS compressor and optimizer](#) based on csstidy. If you want to create a linear or radial gradient as background or border, check our [CSS Gradient Generator](#).



Hey! You found this booklet interesting? Support Converting Colors with the new Membership Option!

The pro membership hides all ads, plus gives you double the colors in the color bucket, and more awesome pro features!

**[Learn more, Memberships starting at \\$2.50/m!](#)**

**Follow me  
on Twitter!**

@ConvertingColor