

Converting Colors

Android(4292329394)

Have a look what the booklet for
Android(4292329394) contains.

Android(4292329394)	3
<i>Conversions</i>	4
<i>Details</i>	6
<i>Harmonies</i>	11
<i>Previews</i>	23
<i>Color Blindness Simulation</i>	26
<i>CSS Examples</i>	29

Color

Android(4292329394)

Conversions

Conversions Part 1

Format	Color
Hex	D7BFB2
RGB	215, 191, 178
RGB Percent	84%, 75%, 70%
CMY	0.1569, 0.2510, 0.3020
CMYK	0.00, 0.11, 0.17, 0.16
HSL	21°, 32%, 77%
HSV	21°, 17%, 84%
XYZ	54.6910, 54.9230, 49.8382
YIQ	196.6940, 18.4770, 1.0450

Conversions

Conversions Part 2

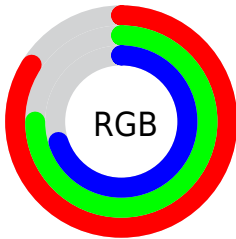
Format	Color
R _Y B	215, 198, 178
Decimal	14139314
CIE Lab	79.00, 6.41, 9.65
CIE LCh	79, 11.586, 56.437
Yxy	54.9230, 0.3430, 0.3444
Android (android.graphics.Color)	4292329394 (0xFFD7BFB2)
YUV	196.6940, -9.2161, 16.0544
Hunter-Lab	74.1101, 2.0350, 12.0052

Details

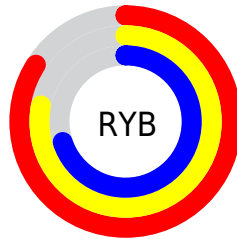
The Android color `4292329394` is a light color, and the websafe version is hex `CCCCCC`. A complement of this color would be `4289907415`, and the grayscale version is `4291151301`.

A 20% lighter version of the original color is `4294965226`, and `4288711293` is the 20% darker color. If you saturate the color by 10%, you get `4292325789`, and if you desaturate by 10%, it is `4292333000`.

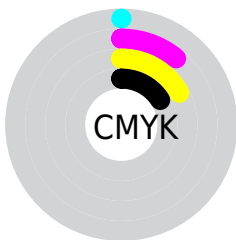
Distribution



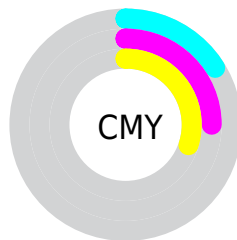
- Red (84%)
- Green (75%)
- Blue (70%)



- Red (84%)
- Yellow (78%)
- Blue (70%)



- Cyan (0%)
- Magenta (11%)
- Yellow (17%)
- Black (16%)



- Cyan (16%)
- Magenta (25%)
- Yellow (30%)

Brightness & Saturation Gradients

These gradients show how the Android color 4292329394 changes by changing the brightness by 10 percent. The first figure shows a shift by +10% for each color and the second figure -10%.

Similar to the brightness gradients but the following saturation gradients show a change of the Android color 4292329394 by changing the saturation by 10% instead.

 4292329394

 4292329394

4294967295

 4290487447

 4294965226

 4288711293

 4287000676

 4285290573

 4283646006

 4282133024

 4280686090

 4278517760

 4278190080

 4292329394

 4292329394

 4292325789

 4292333000

 4292322183

 4292336605

 4292318577

 4292340211

 4292314972

 4292343807

 4292311366

 4292345855

 4292307761

 4292304155

 4292300550

 4292299776

Harmonies

Analogous

The Analogous color harmony consists of three colors that are next to each other on the color wheel.



4292591034



4292329394



4291740334

Triad

The Triadic color harmony groups three colors that are evenly spaced from another and form a triangle on the color wheel.



4292329394



4289514178



4291084759

Complementary

The Complementary color scheme is a pair of colors which are on the opposite of each other on the color wheel.



4292329394



4289907415

Split Complementary

Split-complementary colors differ from the complementary color scheme. The scheme consists of three colors, the original color and two neighbors of the complement color.



4290233817



4292329394



4289317581

Square

The Square scheme is like the rectangle color scheme, but the four colors are evenly spaced on the color wheel.



4292329394



4290169271



4289513685



4291935952

Rectangle

The Rectangle color scheme consists of four colors that form a rectangle on the color wheel.



4292329394



4291216815



4289513685



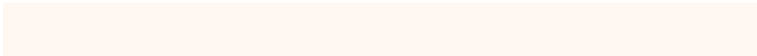
4290822872

Sweetspot

The Sweet Spot groups the original color and five complimentary colors.



4292329394



4294965234



4292326090



4286610296



4278190080



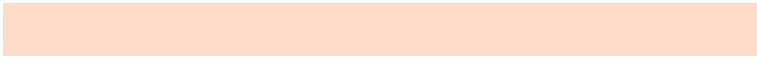
4286611584

Same Dimension

The Same Dimension uses a secret algorithm to generate beautiful new colors.



4292329394



4294958281



4292334002



4285228128



4289412096



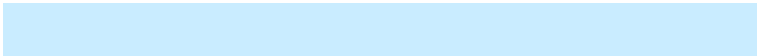
4281011968

Inverse Universe

The Inverse Universe completely reimagines the original color for something new.



4289907415



4291423487



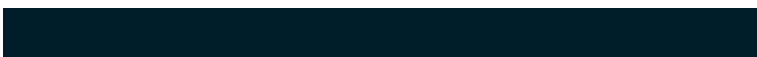
4289902807



4284508011



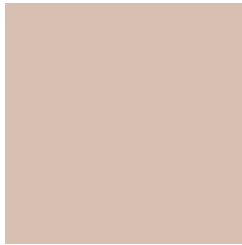
4278218667



4278197291

Previews

White Background



This preview shows how the Android color 4292329394 looks on a white background.

Color Contrast Check

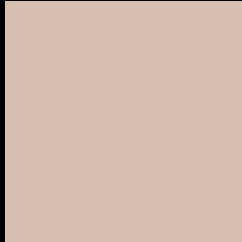
Large Text (above 18pt) WCAG AA × Fail

Any Text WCAG AA × Fail

Large Text (above 18pt) WCAG AAA × Fail

Any Text WCAG AAA × Fail

Black Background



This preview shows how the Android color 4292329394 looks on a black background.

Color Contrast Check

Large Text (above 18pt) WCAG AA ✓ Pass

Any Text WCAG AA ✓ Pass

Large Text (above 18pt) WCAG AAA ✓ Pass

Any Text WCAG AAA ✓ Pass

If you want to check with other color combinations, try the [Color Contrast Checker](#).

Android 4292329394 Background



This preview shows how black text looks on a background with the Android color 4292329394.



This preview shows how white text looks on a background with the Android color 4292329394.

Color Blindness Simulation

Color vision deficiency is a very complex topic, and I could not describe the different causes any better than Wikipedia does, so if you want to learn more, you should check out their [article about color blindness](#).

Dichromacy



Original Color
4292329394

Protanopia
4291543988

Deuteranopia
4292722098

Trichromacy



Original Color
4292329394

Protanomaly
4291805875

Deuteranomaly
4292591282

Tritanomaly
4292459713

Monochromacy



Original Color
4292329394

Achromatopsia
4291151301

Achromatomaly
4291609534

CSS Examples

Text

The CSS property to change the color of the text to Android 4292329394 is called "color". The color property can be set on classes, ids or directly on the HTML element.

This example shows how text in the color `rgb(215, 191, 178)` looks like.

```
.text, #text, p{  
    color:rgb(215, 191, 178)  
}
```

If you want to add a text shadow in that color use the text-shadow property, you can generate a text shadow directly with our [CSS Text Shadow Generator](#).

Here you see how black text with a 4 pixel rgb(215, 191, 178) colored shadow looks like.

```
.shadow{ text-shadow: 4px 4px 2px rgb(215, 191, 178) }
```

Border

The CSS property to change the border of an element to Android 4292329394 is called "border". The border property can be set on classes, ids or directly on the HTML element.

This example shows the color as border, it can be applied via the CSS property "border" or "border-color".

```
.border, #border, table{ border:4px solid rgb(215, 191, 178) }
```

If only the border color should be changed use the property `border-color`.

```
.border{ border-color:rgb(215, 191, 178) }
```

If you want to add a box shadow in that color use:

Here you see how a box with a 4 pixel `rgb(215, 191, 178)` colored shadow looks like.

```
.boxshadow{ -moz-box-shadow:4px 4px 4px  
4px rgb(215, 191, 178); -webkit-box-  
shadow:4px 4px 4px 4px rgb(215, 191, 178);  
box-shadow:4px 4px 4px 4px rgb(215, 191,  
178) }
```

Background

The CSS property to change the background color of an element to Android 4292329394 is called "background". The background property can be set on classes, ids or directly on the HTML element.

```
.background, #background, body{  
background: rgb(215, 191, 178) }
```

If only the background color should be changed can be used:

```
.background{ background-color: rgb(215,  
191, 178) }
```

This example shows the color as background, it is applied via the CSS property "background".

To optimize and compress your CSS code, you can use our [online CSS compressor and optimizer](#) based on csstidy. If you want to create a linear or radial gradient as background or border, check our [CSS Gradient Generator](#).

Hey! You found this booklet interesting? Support Converting Colors with the new Membership Option!

The pro membership hides all ads, plus gives you double the colors in the color bucket, and more awesome pro features!

[Learn more, Memberships starting at \\$2.50/m!](#)

**Follow me
on Twitter!**

@ConvertingColor