

Converting Colors

Android(4292329921)

Have a look what the booklet for
Android(4292329921) contains.

Android(4292329921)	3
<i>Conversions</i>	4
<i>Details</i>	6
<i>Harmonies</i>	11
<i>Previews</i>	23
<i>Color Blindness Simulation</i>	26
<i>CSS Examples</i>	29

Color

Android(4292329921)

Conversions

Conversions Part 1

Format	Color
Hex	D7C1C1
RGB	215, 193, 193
RGB Percent	84%, 76%, 76%
CMY	0.1569, 0.2431, 0.2431
CMYK	0.00, 0.10, 0.10, 0.16
HSL	0°, 22%, 80%
HSV	0°, 10%, 84%
XYZ	56.7199, 56.4373, 58.3561
YIQ	199.5780, 13.1120, 4.6640

Conversions

Conversions Part 2

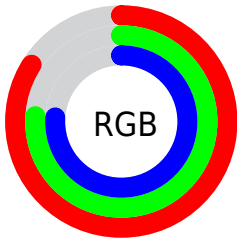
Format	Color
R _Y B	215, 193, 193
Decimal	14139841
CIE Lab	79.86, 7.76, 2.82
CIE LCh	80, 8.254, 19.994
Yxy	56.4373, 0.3307, 0.3291
Android (android.graphics.Color)	4292329921 (0xFFD7C1C1)
YUV	199.5780, -3.2430, 13.5251
Hunter-Lab	75.1247, 3.3010, 6.5315

Details

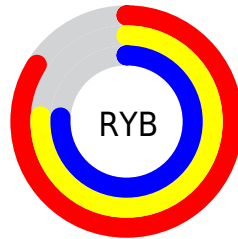
The Android color `4292329921` is a light color, and the websafe version is hex `CCCCCC`. A complement of this color would be `4290893783`, and the grayscale version is `4291348680`.

A 20% lighter version of the original color is `4294965753`, and `4288711564` is the 20% darker color. If you saturate the color by 10%, you get `4292324524`, and if you desaturate by 10%, it is `4292335575`.

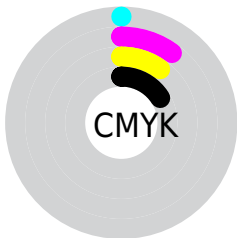
Distribution



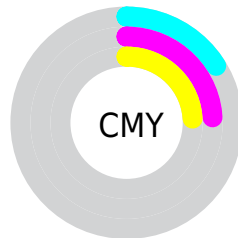
- Red (84%)
- Green (76%)
- Blue (76%)



- Red (84%)
- Yellow (76%)
- Blue (76%)



- Cyan (0%)
- Magenta (10%)
- Yellow (10%)
- Black (16%)



- Cyan (16%)
- Magenta (24%)
- Yellow (24%)

Brightness & Saturation Gradients

These gradients show how the Android color 4292329921 changes by changing the brightness by 10 percent. The first figure shows a shift by +10% for each color and the second figure -10%.

Similar to the brightness gradients but the following saturation gradients show a change of the Android color 4292329921 by changing the saturation by 10% instead.

 4292329921

 4292329921

4294967295

 4290487974

 4294965753

 4288711564

 4287001202

 4285290842

 4283712066

 4282199084

 4280686360

 4279304192

 4278190080

 4292329921

 4292329921

 4292324524

 4292335575

 4292318870

 4292340972

 4292313473

 4292345855

 4292307819

 4292302422

 4292296768

 4292291114

 4292285717

 4292280320

Harmonies

Analogous

The Analogous color harmony consists of three colors that are next to each other on the color wheel.



4292133321



4292329921



4292199098

Triad

The Triadic color harmony groups three colors that are evenly spaced from another and form a triangle on the color wheel.



4292329921



4290693564



4290496469

Complementary

The Complementary color scheme is a pair of colors which are on the opposite of each other on the color wheel.



4292329921



4290893783

Split Complementary

Split-complementary colors differ from the complementary color scheme. The scheme consists of three colors, the original color and two neighbors of the complement color.



4290103761



4292329921



4290235075

Square

The Square scheme is like the rectangle color scheme, but the four colors are evenly spaced on the color wheel.



4292329921



4291282872



4289973195



4291085780

Rectangle

The Rectangle color scheme consists of four colors that form a rectangle on the color wheel.



4292329921



4292003000



4289973195



4290365652

Sweetspot

The Sweet Spot groups the original color and five complimentary colors.



4292329921



4294965239



4292329943



4286610042



4278190080



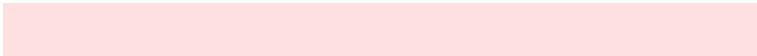
4286611584

Same Dimension

The Same Dimension uses a secret algorithm to generate beautiful new colors.



4292329921



4294959328



4292332737



4285227104



4289396736



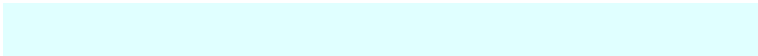
4281008128

Inverse Universe

The Inverse Universe completely reimagines the original color for something new.



4290893783



4292935679



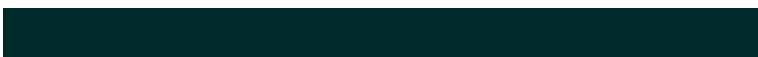
4290890967



4284509035



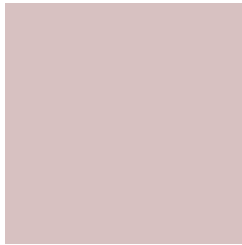
4278234027



4278201131

Previews

White Background



This preview shows how the Android color 4292329921 looks on a white background.

Color Contrast Check

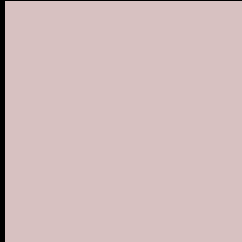
Large Text (above 18pt) WCAG AA × Fail

Any Text WCAG AA × Fail

Large Text (above 18pt) WCAG AAA × Fail

Any Text WCAG AAA × Fail

Black Background



This preview shows how the Android color 4292329921 looks on a black background.

Color Contrast Check

Large Text (above 18pt) WCAG AA ✓ Pass

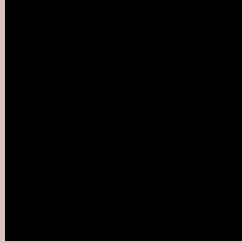
Any Text WCAG AA ✓ Pass

Large Text (above 18pt) WCAG AAA ✓ Pass

Any Text WCAG AAA ✓ Pass

If you want to check with other color combinations, try the [Color Contrast Checker](#).

Android 4292329921 Background



This preview shows how black text looks on a background with the Android color 4292329921.



This preview shows how white text looks on a background with the Android color 4292329921.

Color Blindness Simulation

Color vision deficiency is a very complex topic, and I could not describe the different causes any better than Wikipedia does, so if you want to learn more, you should check out their [article about color blindness](#).


Dichromacy



Original Color
4292329921

Protanopia
4291478979

Deuteranopia
4292591809



Tritanopia
4292460494

Trichromacy



Original Color
4292329921

Protanomaly
4291806402

Deuteranomaly
4292526273

Tritanomaly
4292395209

Monochromacy



Original Color
4292329921

Achromatopsia
4291348680

Achromatomaly
4291675589

CSS Examples

Text

The CSS property to change the color of the text to Android 4292329921 is called "color". The color property can be set on classes, ids or directly on the HTML element.

This example shows how text in the color `rgb(215, 193, 193)` looks like.

```
.text, #text, p{  
    color:rgb(215, 193, 193)  
}
```

If you want to add a text shadow in that color use the text-shadow property, you can generate a text shadow directly with our [CSS Text Shadow Generator](#).

Here you see how black text with a 4 pixel rgb(215, 193, 193) colored shadow looks like.

```
.shadow{ text-shadow: 4px 4px 2px rgb(215, 193, 193) }
```

Border

The CSS property to change the border of an element to Android 4292329921 is called "border". The border property can be set on classes, ids or directly on the HTML element.

This example shows the color as border, it can be applied via the CSS property "border" or "border-color".

```
.border, #border, table{ border:4px solid rgb(215, 193, 193) }
```

If only the border color should be changed use the property `border-color`.

```
.border{ border-color:rgb(215, 193, 193) }
```

If you want to add a box shadow in that color use:

Here you see how a box with a 4 pixel `rgb(215, 193, 193)` colored shadow looks like.

```
.boxshadow{ -moz-box-shadow:4px 4px 4px  
4px rgb(215, 193, 193); -webkit-box-  
shadow:4px 4px 4px 4px rgb(215, 193, 193);  
box-shadow:4px 4px 4px 4px rgb(215, 193,  
193) }
```

Background

The CSS property to change the background color of an element to Android 4292329921 is called "background". The background property can be set on classes, ids or directly on the HTML element.

```
.background, #background, body{  
background: rgb(215, 193, 193) }
```

If only the background color should be changed can be used:

```
.background{ background-color: rgb(215,  
193, 193) }
```

This example shows the color as background, it is applied via the CSS property "background".

To optimize and compress your CSS code, you can use our [online CSS compressor and optimizer](#) based on csstidy. If you want to create a linear or radial gradient as background or border, check our [CSS Gradient Generator](#).

Hey! You found this booklet interesting? Support Converting Colors with the new Membership Option!

The pro membership hides all ads, plus gives you double the colors in the color bucket, and more awesome pro features!

[Learn more, Memberships starting at \\$2.50/m!](#)

**Follow me
on Twitter!**

@ConvertingColor