

# Converting Colors

Android(4292330174)

Have a look what the booklet for  
Android(4292330174) contains.

<b>Android(4292330174)</b> .....	3
<b><i>Conversions</i></b> .....	4
<b><i>Details</i></b> .....	6
<b><i>Harmonies</i></b> .....	11
<b><i>Previews</i></b> .....	23
<b><i>Color Blindness Simulation</i></b> .....	26
<b><i>CSS Examples</i></b> .....	29

# **Color**

**Android(4292330174)**

# Conversions

## Conversions Part 1

Format	Color
Hex	D7C2BE
RGB	215, 194, 190
RGB Percent	84%, 76%, 75%
CMY	0.1569, 0.2392, 0.2549
CMYK	0.00, 0.10, 0.12, 0.16
HSL	10°, 24%, 79%
HSV	10°, 12%, 84%
XYZ	56.6104, 56.7484, 56.6850
YIQ	199.8230, 13.8000, 3.2080

# Conversions

## Conversions Part 2

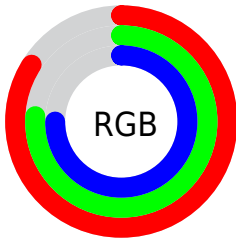
<b>Format</b>	<b>Color</b>
R <sub>YB</sub>	215, 195, 190
Decimal	14140094
CIE Lab	80.04, 6.73, 4.69
CIE LCh	80, 8.202, 34.888
Yxy	56.7484, 0.3329, 0.3337
Android (android.graphics.Color)	4292330174 (0xFFD7C2BE)
YUV	199.8230, -4.8427, 13.3102
Hunter-Lab	75.3315, 2.3097, 8.1178

# Details

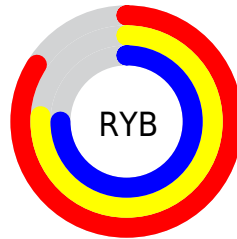
The Android color `4292330174` is a light color, and the websafe version is hex `CCCCCC`. A complement of this color would be `4290696151`, and the grayscale version is `4291348680`.

A 20% lighter version of the original color is `4294966006`, and `4288711817` is the 20% darker color. If you saturate the color by 10%, you get `4292325545`, and if you desaturate by 10%, it is `4292334804`.

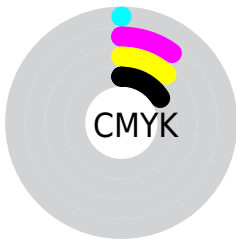
# Distribution



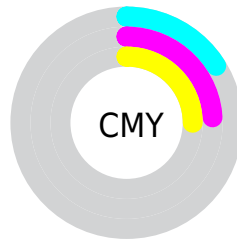
- Red (84%)
- Green (76%)
- Blue (75%)



- Red (84%)
- Yellow (76%)
- Blue (75%)



- Cyan (0%)
- Magenta (10%)
- Yellow (12%)
- Black (16%)



- Cyan (16%)
- Magenta (24%)
- Yellow (25%)

# Brightness & Saturation Gradients

These gradients show how the Android color 4292330174 changes by changing the brightness by 10 percent. The first figure shows a shift by +10% for each color and the second figure -10%.

Similar to the brightness gradients but the following saturation gradients show a change of the Android color 4292330174 by changing the saturation by 10% instead.



 4292330174

 4292330174

4294967295

 4290488227

 4294966006

 4288711817

 4287001455

 4285291095

 4283712320

 4282199338

 4280686613

 4279238656

 4278190080

 4292330174

 4292330174

 4292325545

 4292334804

 4292320915

 4292339433

 4292316286

 4292344063

 4292311656

 4292345855

 4292307027

 4292302397

 4292297768

 4292293138

 4292289024

# Harmonies

## Analogous

The Analogous color harmony consists of three colors that are next to each other on the color wheel.



4292329925



4292330174



4292068537

# Triad

The Triadic color harmony groups three colors that are evenly spaced from another and form a triangle on the color wheel.



4292330174



4290497216



4290824150

# Complementary

The Complementary color scheme is a pair of colors which are on the opposite of each other on the color wheel.



4292330174



4290696151

# Split Complementary

Split-complementary colors differ from the complementary color scheme. The scheme consists of three colors, the original color and two neighbors of the complement color.



4290300372



4292330174



4290104263

# Square

The Square scheme is like the rectangle color scheme, but the four colors are evenly spaced on the color wheel.



4292330174



4291021242



4290038735



4291478739

# Rectangle

The Rectangle color scheme consists of four colors that form a rectangle on the color wheel.



4292330174



4291741111



4290038735



4290627541

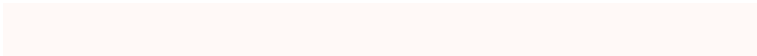


# Sweetspot

The Sweet Spot groups the original color and five complimentary colors.



4292330174



4294965751



4292329171



4286610298



4278190080



4286611584

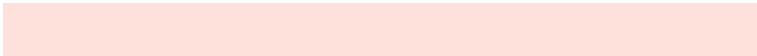


# Same Dimension

The Same Dimension uses a secret algorithm to generate beautiful new colors.



4292330174



4294959579



4292333246



4285227616



4289403648



4281009920

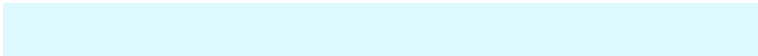


# Inverse Universe

The Inverse Universe completely reimagines the original color for something new.



4290696151



4292606463



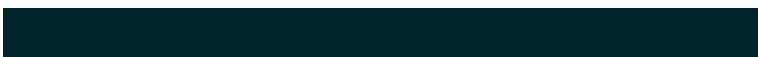
4290693079



4284508523



4278227115

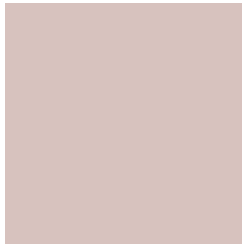


4278199339



# Previews

## White Background



This preview shows how the Android color 4292330174 looks on a white background.

## Color Contrast Check

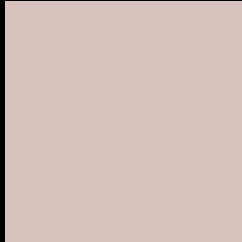
Large Text (above 18pt) WCAG AA × Fail

Any Text WCAG AA × Fail

Large Text (above 18pt) WCAG AAA × Fail

Any Text WCAG AAA × Fail

# Black Background



This preview shows how the Android color 4292330174 looks on a black background.

## Color Contrast Check

Large Text (above 18pt) WCAG AA ✓ Pass

Any Text WCAG AA ✓ Pass

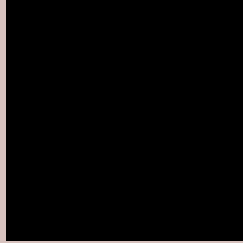
Large Text (above 18pt) WCAG AAA ✓ Pass

Any Text WCAG AAA ✓ Pass

If you want to check with other color combinations, try the [Color Contrast Checker](#).



# Android 4292330174 Background



This preview shows how black text looks on a background with the Android color 4292330174.



This preview shows how white text looks on a background with the Android color 4292330174.

# Color Blindness Simulation

Color vision deficiency is a very complex topic, and I could not describe the different causes any better than Wikipedia does, so if you want to learn more, you should check out their [article about color blindness](#).

## Dichromacy



**Original Color**  
4292330174

**Protanopia**  
4291610304

**Deuteranopia**  
4292722878



# Trichromacy



**Original Color**  
4292330174

**Protanomaly**  
4291872191

**Deuteranomaly**  
4292592062

**Tritanomaly**  
4292395208

# Monochromacy



**Original Color**  
4292330174

**Achromatopsia**  
4291348680

**Achromatomaly**  
4291675844

# CSS Examples

## Text

The CSS property to change the color of the text to Android 4292330174 is called "color". The color property can be set on classes, ids or directly on the HTML element.

This example shows how text in the color `rgb(215, 194, 190)` looks like.

```
.text, #text, p{  
    color:rgb(215, 194, 190)  
}
```

If you want to add a text shadow in that color use the text-shadow property, you can generate a text shadow directly with our [CSS Text Shadow Generator](#).

Here you see how black text with a 4 pixel rgb(215, 194, 190) colored shadow looks like.

```
.shadow{ text-shadow: 4px 4px 2px rgb(215, 194, 190) }
```

## Border

The CSS property to change the border of an element to Android 4292330174 is called "border". The border property can be set on classes, ids or directly on the HTML element.

This example shows the color as border, it can be applied via the CSS property "border" or "border-color".

```
.border, #border, table{ border:4px solid rgb(215, 194, 190) }
```

If only the border color should be changed use the property `border-color`.

```
.border{ border-color:rgb(215, 194, 190) }
```

If you want to add a box shadow in that color use:

Here you see how a box with a 4 pixel `rgb(215, 194, 190)` colored shadow looks like.

```
.boxshadow{ -moz-box-shadow:4px 4px 4px  
4px rgb(215, 194, 190); -webkit-box-  
shadow:4px 4px 4px 4px rgb(215, 194, 190);  
box-shadow:4px 4px 4px 4px rgb(215, 194,  
190) }
```

# Background

The CSS property to change the background color of an element to Android 4292330174 is called "background". The background property can be set on classes, ids or directly on the HTML element.

```
.background, #background, body{  
background: rgb(215, 194, 190) }
```

If only the background color should be changed can be used:

```
.background{ background-color: rgb(215,  
194, 190) }
```

This example shows the color as background, it is applied via the CSS property "background".

To optimize and compress your CSS code, you can use our [online CSS compressor and optimizer](#) based on csstidy. If you want to create a linear or radial gradient as background or border, check our [CSS Gradient Generator](#).



Hey! You found this booklet interesting? Support Converting Colors with the new Membership Option!

The pro membership hides all ads, plus gives you double the colors in the color bucket, and more awesome pro features!

**[Learn more, Memberships starting at \\$2.50/m!](#)**

**Follow me  
on Twitter!**

@ConvertingColor