

Converting Colors

Android(4292355943)

Have a look what the booklet for
Android(4292355943) contains.

Android(4292355943)	3
<i>Conversions</i>	4
<i>Details</i>	6
<i>Harmonies</i>	11
<i>Previews</i>	23
<i>Color Blindness Simulation</i>	26
<i>CSS Examples</i>	29

Color

Android(4292355943)

Conversions

Conversions Part 1

Format	Color
Hex	D82767
RGB	216, 39, 103
RGB Percent	85%, 15%, 40%
CMY	0.1529, 0.8471, 0.5961
CMYK	0.00, 0.82, 0.52, 0.15
HSL	338°, 69%, 50%
HSV	338°, 82%, 85%
XYZ	31.4926, 17.0292, 14.4591
YIQ	99.2190, 84.9480, 57.4280

Conversions

Conversions Part 2

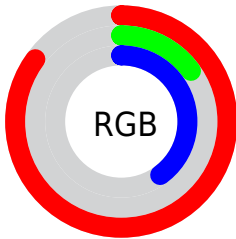
Format	Color
R_{YB}	216, 39, 103
Decimal	14165863
CIE _{Lab}	48.30, 68.85, 8.82
CIE _{LCh}	48, 69.408, 7.300
Yxy	17.0292, 0.5000, 0.2704
Android (android.graphics.Color)	4292355943 (0xFFD82767)
YUV	99.2190, 1.8640, 102.4169
Hunter-Lab	41.2665, 64.0062, 8.1123

Details

The Android color **4292355943** is a dark color, and the websafe version is hex **CC3366**. The color can be described as dark washed rose. A complement of this color would be **4280801432**, and the grayscale version is **4284703587**.

A 20% lighter version of the original color is **4294928538**, and **4288348217** is the 20% darker color. If you saturate the color by 10%, you get **4292350297**, and if you desaturate by 10%, it is **4292361589**.

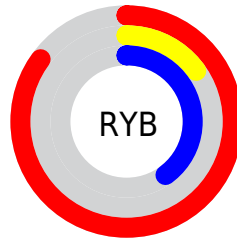
Distribution



Red (85%)

Green (15%)

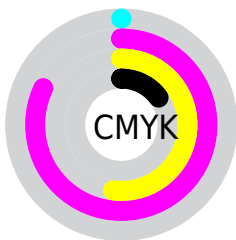
Blue (40%)



Red (85%)

Yellow (15%)

Blue (40%)

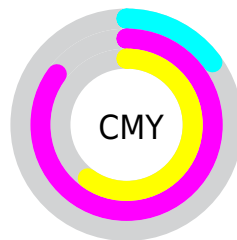


Cyan (0%)

Magenta (82%)

Yellow (52%)

Black (15%)



Cyan (15%)

Magenta (85%)

Yellow (60%)

Brightness & Saturation Gradients

These gradients show how the Android color 4292355943 changes by changing the brightness by 10 percent. The first figure shows a shift by +10% for each color and the second figure -10%.

Similar to the brightness gradients but the following saturation gradients show a change of the Android color 4292355943 by changing the saturation by 10% instead.

 4292355943

 4292355943

4294967295

 4290314319

 4294928538

 4288348217

 4294936244

 4286316580

 4294943696

 4284350478

 4294951148

 4282515459

 4294958847

 4280287233

 4294966527

 4278190080

 4292355943

 4292355943

 4292350297

 4292361589

■ 4292345934

■ 4292366979

■ 4292372624

■ 4292378014

■ 4292383660

■ 4292389306

■ 4292394696

■ 4292400341

■ 4292405731

Harmonies

Analogous

The Analogous color harmony consists of three colors that are next to each other on the color wheel.



4290918817



4292355943



4291772462

Triad

The Triadic color harmony groups three colors that are evenly spaced from another and form a triangle on the color wheel.



4292355943



4282221056



4278224351

Complementary

The Complementary color scheme is a pair of colors which are on the opposite of each other on the color wheel.



4292355943



4280801432

Split Complementary

Split-complementary colors differ from the complementary color scheme. The scheme consists of three colors, the original color and two neighbors of the complement color.



4278225849



4292355943



4278225218

Square

The Square scheme is like the rectangle color scheme, but the four colors are evenly spaced on the color wheel.



4292355943



4286477568



4278226048



4278220520

Rectangle

The Rectangle color scheme consists of four colors that form a rectangle on the color wheel.



4292355943



4290467072



4278226048



4278225109

Sweetspot

The Sweet Spot groups the original color and five complimentary colors.



4292355943



4294950870



4288096216



4286601575



4278190080



4286611584

Same Dimension

The Same Dimension uses a secret algorithm to generate beautiful new colors.



4292355943



4294903135



4292362023



4285227108



4289396798



4281008144

Inverse Universe

The Inverse Universe completely reimagines the original color for something new.



4292355943



4294903135



4280795352



4285227108



4289396798



4281008144

Previews

White Background



This preview shows how the Android color 4292355943 looks on a white background.

Color Contrast Check

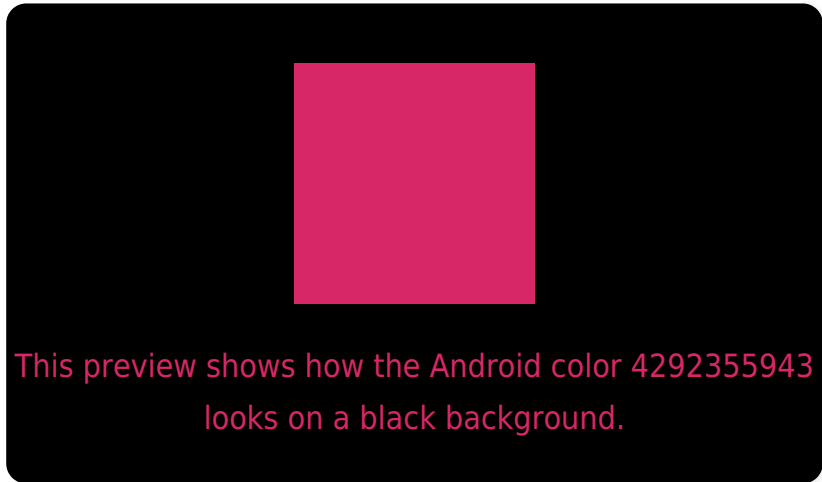
Large Text (above 18pt) WCAG AA ✓ Pass

Any Text WCAG AA ✓ Pass

Large Text (above 18pt) WCAG AAA ✓ Pass

Any Text WCAG AAA × Fail

Black Background



Color Contrast Check

Large Text (above 18pt) WCAG AA ✓ Pass

Any Text WCAG AA × Fail

Large Text (above 18pt) WCAG AAA × Fail

Any Text WCAG AAA × Fail

If you want to check with other color combinations, try the [Color Contrast Checker](#).

Android 4292355943 Background



This preview shows how black text looks on a background with the Android color 4292355943.



This preview shows how white text looks on a background with the Android color 4292355943.

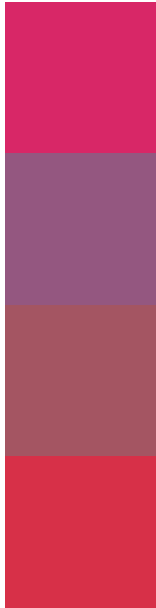
Color Blindness Simulation

Color vision deficiency is a very complex topic, and I could not describe the different causes any better than Wikipedia does, so if you want to learn more, you should check out their [article about color blindness](#).

Dichromacy



Trichromacy



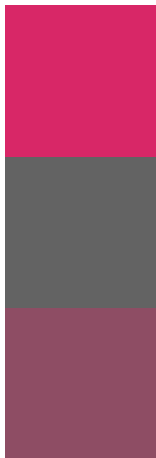
Original Color
4292355943

Protanomaly
4287911808

Deuteranomaly
4288959842

Tritanomaly
4292292680

Monochromacy



Original Color
4292355943

Achromatopsia
4284703587

Achromatomaly
4287516004

CSS Examples

Text

The CSS property to change the color of the text to Android 4292355943 is called "color". The color property can be set on classes, ids or directly on the HTML element.

This example shows how text in the color `rgb(216, 39, 103)` looks like.

```
.text, #text, p{  
    color:rgb(216, 39, 103)  
}
```

If you want to add a text shadow in that color use the text-shadow property, you can generate a text shadow directly with our [CSS Text Shadow Generator](#).

Here you see how black text with a 4 pixel rgb(216, 39, 103) colored shadow looks like.

```
.shadow{ text-shadow: 4px 4px 2px rgb(216, 39, 103) }
```

Border

The CSS property to change the border of an element to Android 4292355943 is called "border". The border property can be set on classes, ids or directly on the HTML element.

This example shows the color as border, it can be applied via the CSS property "border" or "border-color".

```
.border, #border, table{ border:4px solid rgb(216, 39, 103) }
```

If only the border color should be changed use the property `border-color`.

```
.border{ border-color:rgb(216, 39, 103) }
```

If you want to add a box shadow in that color use:

Here you see how a box with a 4 pixel `rgb(216, 39, 103)` colored shadow looks like.

```
.boxshadow{ -moz-box-shadow:4px 4px 4px  
4px rgb(216, 39, 103); -webkit-box-  
shadow:4px 4px 4px 4px rgb(216, 39, 103);  
box-shadow:4px 4px 4px 4px rgb(216, 39,  
103) }
```

Background

The CSS property to change the background color of an element to Android 4292355943 is called "background". The background property can be set on classes, ids or directly on the HTML element.

```
.background, #background, body{  
background: rgb(216, 39, 103) }
```

If only the background color should be changed can be used:

```
.background{ background-color: rgb(216, 39,  
103) }
```

This example shows the color as background, it is applied via the CSS property "background".

To optimize and compress your CSS code, you can use our [online CSS compressor and optimizer](#) based on csstidy. If you want to create a linear or radial gradient as background or border, check our [CSS Gradient Generator](#).

Hey! You found this booklet interesting? Support Converting Colors with the new Membership Option!

The pro membership hides all ads, plus gives you double the colors in the color bucket, and more awesome pro features!

[Learn more, Memberships starting at \\$2.50/m!](#)

**Follow me
on Twitter!**

@ConvertingColor