

Converting Colors

Android(4292369012)

Have a look what the booklet for
Android(4292369012) contains.

Android(4292369012)	3
<i>Conversions</i>	4
<i>Details</i>	6
<i>Harmonies</i>	11
<i>Previews</i>	23
<i>Color Blindness Simulation</i>	26
<i>CSS Examples</i>	29

Color

Android(4292369012)

Conversions

Conversions Part 1

Format	Color
Hex	D85A74
RGB	216, 90, 116
RGB Percent	85%, 35%, 45%
CMY	0.1529, 0.6471, 0.5451
CMYK	0.00, 0.58, 0.46, 0.15
HSL	348°, 62%, 60%
HSV	348°, 58%, 85%
XYZ	35.1275, 23.1722, 19.1443
YIQ	130.6380, 66.7500, 34.7980

Conversions

Conversions Part 2

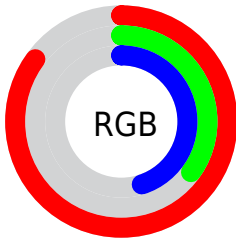
Format	Color
R _Y B	216, 90, 116
Decimal	14178932
CIE Lab	55.25, 51.71, 10.80
CIE LCh	55, 52.824, 11.797
Yxy	23.1722, 0.4536, 0.2992
Android (android.graphics.Color)	4292369012 (0xFFD85A74)
YUV	130.6380, -7.2165, 74.8625
Hunter-Lab	48.1375, 46.0163, 10.1167

Details

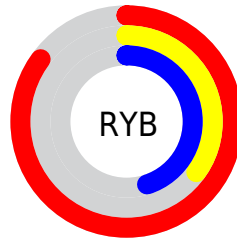
The Android color **4292369012** is a dark color, and the websafe version is hex **CC3366**. The color can be described as middle muted rose. A complement of this color would be **4284143806**, and the grayscale version is **4286808963**.

A 20% lighter version of the original color is **4294939048**, and **4288487748** is the 20% darker color. If you saturate the color by 10%, you get **4292363363**, and if you desaturate by 10%, it is **4292374661**.

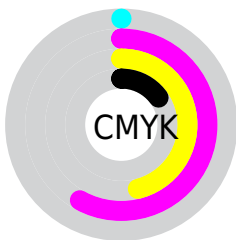
Distribution



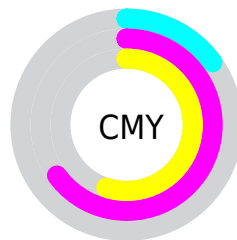
- Red (85%)
- Green (35%)
- Blue (45%)



- Red (85%)
- Yellow (35%)
- Blue (45%)



- Cyan (0%)
- Magenta (58%)
- Yellow (46%)
- Black (15%)



- Cyan (15%)
- Magenta (65%)
- Yellow (55%)

Brightness & Saturation Gradients

These gradients show how the Android color 4292369012 changes by changing the brightness by 10 percent. The first figure shows a shift by +10% for each color and the second figure -10%.

Similar to the brightness gradients but the following saturation gradients show a change of the Android color 4292369012 by changing the saturation by 10% instead.



4292369012



4292369012

4294967295



4290395996



4294939048



4288487748



4294946243



4286513198



4294953439



4284678170



4294960891



4282843136



4281073665



4278190080



4292369012



4292369012



4292363363



4292374661

 4292357970

 4292380054

 4292352321

 4292385703

 4292346927

 4292391097

 4292345901

 4292396746

 4292402395

 4292407788

 4292411389

 4292411391

Harmonies

Analogous

The Analogous color harmony consists of three colors that are next to each other on the color wheel.



4291387298



4292369012



4291782217

Triad

The Triadic color harmony groups three colors that are evenly spaced from another and form a triangle on the color wheel.



4292369012



4284060476



4278227419

Complementary

The Complementary color scheme is a pair of colors which are on the opposite of each other on the color wheel.



4292369012



4284143806

Split Complementary

Split-complementary colors differ from the complementary color scheme. The scheme consists of three colors, the original color and two neighbors of the complement color.



4278229184



4292369012



4278229350

Square

The Square scheme is like the rectangle color scheme, but the four colors are evenly spaced on the color wheel.



4292369012



4287399969



4278229654



4283270110

Rectangle

The Rectangle color scheme consists of four colors that form a rectangle on the color wheel.



4292369012



4290671154



4278229654



4278228180

Sweetspot

The Sweet Spot groups the original color and five complimentary colors.



4292369012



4294955483



4290599640



4286604137



4278190080



4286611584

Same Dimension

The Same Dimension uses a secret algorithm to generate beautiful new colors.



4292369012



4294921585



4292378202



4285227107



4289396771



4281008137

Inverse Universe

The Inverse Universe completely reimagines the original color for something new.



4292369012



4294921585



4284134616



4285227107



4289396771



4281008137

Previews

White Background



This preview shows how the Android color 4292369012 looks on a white background.

Color Contrast Check

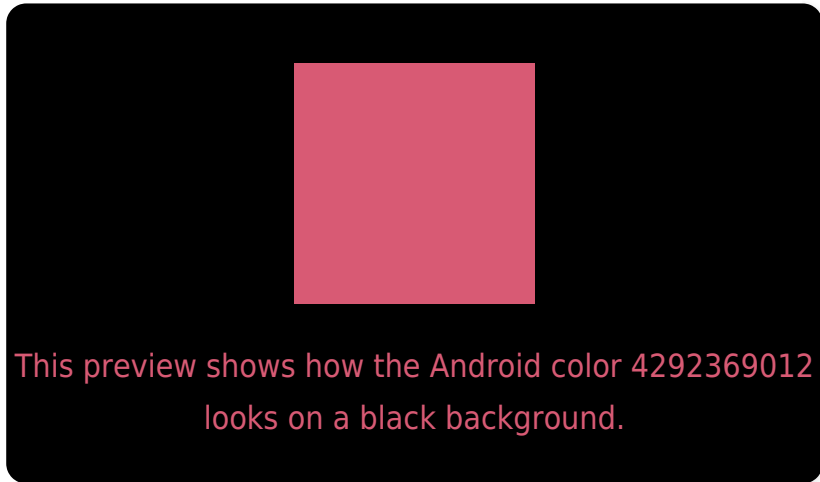
Large Text (above 18pt) WCAG AA ✓ Pass

Any Text WCAG AA ✗ Fail

Large Text (above 18pt) WCAG AAA ✗ Fail

Any Text WCAG AAA ✗ Fail

Black Background



Color Contrast Check

Large Text (above 18pt) WCAG AA ✓ Pass

Any Text WCAG AA ✓ Pass

Large Text (above 18pt) WCAG AAA ✓ Pass

Any Text WCAG AAA × Fail

If you want to check with other color combinations, try the [Color Contrast Checker](#).

Android 4292369012 Background



This preview shows how black text looks on a background with the Android color 4292369012.

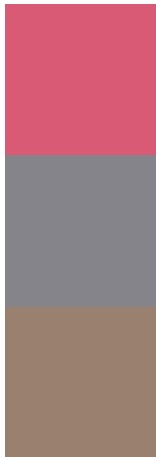


This preview shows how white text looks on a background with the Android color 4292369012.

Color Blindness Simulation

Color vision deficiency is a very complex topic, and I could not describe the different causes any better than Wikipedia does, so if you want to learn more, you should check out their [article about color blindness](#).

Dichromacy

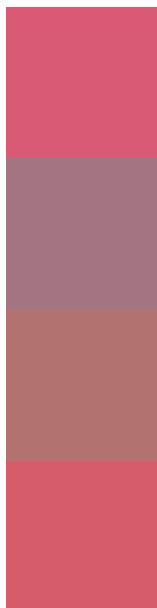


Original Color
[4292369012](#)

Protanopia
[4286940299](#)

Deuteranopia
[4288315502](#)

Trichromacy



Original Color

4292369012

Protanomaly

4288902531

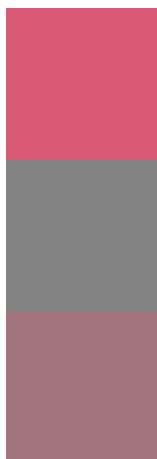
Deuteranomaly

4289819248

Tritanomaly

4292303977

Monochromacy



Original Color

4292369012

Achromatopsia

4286808963

Achromatomaly

4288836734

CSS Examples

Text

The CSS property to change the color of the text to Android 4292369012 is called "color". The color property can be set on classes, ids or directly on the HTML element.

This example shows how text in the color `rgb(216, 90, 116)` looks like.

```
.text, #text, p{  
    color:rgb(216, 90, 116)  
}
```

If you want to add a text shadow in that color use the text-shadow property, you can generate a text shadow directly with our [CSS Text Shadow Generator](#).

Here you see how black text with a 4 pixel rgb(216, 90, 116) colored shadow looks like.

```
.shadow{ text-shadow: 4px 4px 2px rgb(216, 90, 116) }
```

Border

The CSS property to change the border of an element to Android 4292369012 is called "border". The border property can be set on classes, ids or directly on the HTML element.

This example shows the color as border, it can be applied via the CSS property "border" or "border-color".

```
.border, #border, table{ border:4px solid rgb(216, 90, 116) }
```

If only the border color should be changed use the property `border-color`.

```
.border{ border-color:rgb(216, 90, 116) }
```

If you want to add a box shadow in that color use:

Here you see how a box with a 4 pixel `rgb(216, 90, 116)` colored shadow looks like.

```
.boxshadow{ -moz-box-shadow:4px 4px 4px  
4px rgb(216, 90, 116); -webkit-box-  
shadow:4px 4px 4px 4px rgb(216, 90, 116);  
box-shadow:4px 4px 4px 4px rgb(216, 90,  
116) }
```

Background

The CSS property to change the background color of an element to Android 4292369012 is called "background". The background property can be set on classes, ids or directly on the HTML element.

```
.background, #background, body{  
background: rgb(216, 90, 116) }
```

If only the background color should be changed can be used:

```
.background{ background-color: rgb(216, 90,  
116) }
```

This example shows the color as background, it is applied via the CSS property "background".

To optimize and compress your CSS code, you can use our [online CSS compressor and optimizer](#) based on csstidy. If you want to create a linear or radial gradient as background or border, check our [CSS Gradient Generator](#).

Hey! You found this booklet interesting? Support Converting Colors with the new Membership Option!

The pro membership hides all ads, plus gives you double the colors in the color bucket, and more awesome pro features!

[Learn more, Memberships starting at \\$2.50/m!](#)

**Follow me
on Twitter!**

@ConvertingColor