

# Converting Colors

Android(4292378252)

Have a look what the booklet for  
Android(4292378252) contains.

<b>Android(4292378252)</b> .....	3
<b><i>Conversions</i></b> .....	4
<b><i>Details</i></b> .....	6
<b><i>Harmonies</i></b> .....	11
<b><i>Previews</i></b> .....	23
<b><i>Color Blindness Simulation</i></b> .....	26
<b><i>CSS Examples</i></b> .....	29

# **Color**

**Android(4292378252)**

# Conversions

## Conversions Part 1

<b>Format</b>	<b>Color</b>
Hex	D87E8C
RGB	216, 126, 140
RGB Percent	85%, 49%, 55%
CMY	0.1529, 0.5059, 0.4510
CMYK	0.00, 0.42, 0.35, 0.15
HSL	351°, 54%, 67%
HSV	351°, 42%, 85%
XYZ	40.5134, 31.4141, 28.7392
YIQ	154.5060, 49.1460, 23.4340

# Conversions

## Conversions Part 2

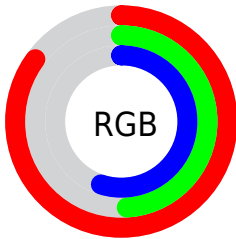
Format	Color
R <sub>Y</sub> B	216, 126, 140
Decimal	14188172
CIE Lab	62.86, 36.40, 7.67
CIE LCh	63, 37.194, 11.894
Yxy	31.4141, 0.4025, 0.3121
Android (android.graphics.Color)	4292378252 (0xFFD87E8C)
YUV	154.5060, -7.1515, 53.9302
Hunter-Lab	56.0483, 30.9407, 8.8324

# Details

The Android color `4292378252` is a light color, and the websafe version is hex `CC6666`. A complement of this color would be `4286503114`, and the grayscale version is `4288387995`.

A 20% lighter version of the original color is `4294948033`, and `4288629594` is the 20% darker color. If you saturate the color by 10%, you get `4292372602`, and if you desaturate by 10%, it is `4292383902`.

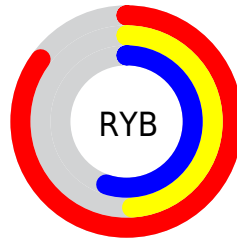
# Distribution



Red (85%)

Green (49%)

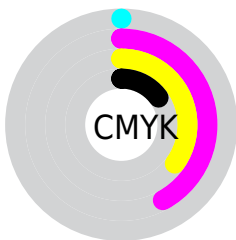
Blue (55%)



Red (85%)

Yellow (49%)

Blue (55%)

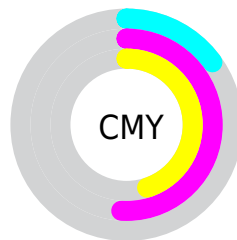


Cyan (0%)

Magenta (42%)

Yellow (35%)

Black (15%)



Cyan (15%)

Magenta (51%)

Yellow (45%)

# Brightness & Saturation Gradients

These gradients show how the Android color 4292378252 changes by changing the brightness by 10 percent. The first figure shows a shift by +10% for each color and the second figure -10%.

Similar to the brightness gradients but the following saturation gradients show a change of the Android color 4292378252 by changing the saturation by 10% instead.



 4292378252

 4292378252

4294967295

 4290471027

 4294948033

 4288629594

 4294955229

 4286788163

 4294962682

 4284946477

 4283236376

 4281663488

 4279107584

 4278190080

 4292378252

 4292378252

 4292372602

 4292383902

 4292367208

 4292389296

 4292361557

 4292394947

 4292356163

 4292400341

 4292350513

 4292405991

 4292345890

 4292411385

 4292411391

# Harmonies

## Analogous

The Analogous color harmony consists of three colors that are next to each other on the color wheel.



4291592621



4292378252



4291986541

# Triad

The Triadic color harmony groups three colors that are evenly spaced from another and form a triangle on the color wheel.



4292378252



4286358374



4282294742

# Complementary

The Complementary color scheme is a pair of colors which are on the opposite of each other on the color wheel.



4292378252



4286503114

# Split Complementary

Split-complementary colors differ from the complementary color scheme. The scheme consists of three colors, the original color and two neighbors of the complement color.



4278233027



4292378252



4283541634

# Square

The Square scheme is like the rectangle color scheme, but the four colors are evenly spaced on the color wheel.



4292378252



4288715350



4279216805



4286420952

# Rectangle

The Rectangle color scheme consists of four colors that form a rectangle on the color wheel.



4292378252



4291201886



4279216805



4280526034



# Sweetspot

The Sweet Spot groups the original color and five complimentary colors.



4292378252



4294958819



4291395288



4286606190



4278190080



4286611584



# Same Dimension

The Same Dimension uses a secret algorithm to generate beautiful new colors.



4292378252



4294934675



4292385918



4285227106



4289396763



4281008135



# Inverse Universe

The Inverse Universe completely reimagines the original color for something new.



4292378252



4294934675



4286495448



4285227106



4289396763



4281008135



# Previews

## White Background



This preview shows how the Android color 4292378252 looks on a white background.

## Color Contrast Check

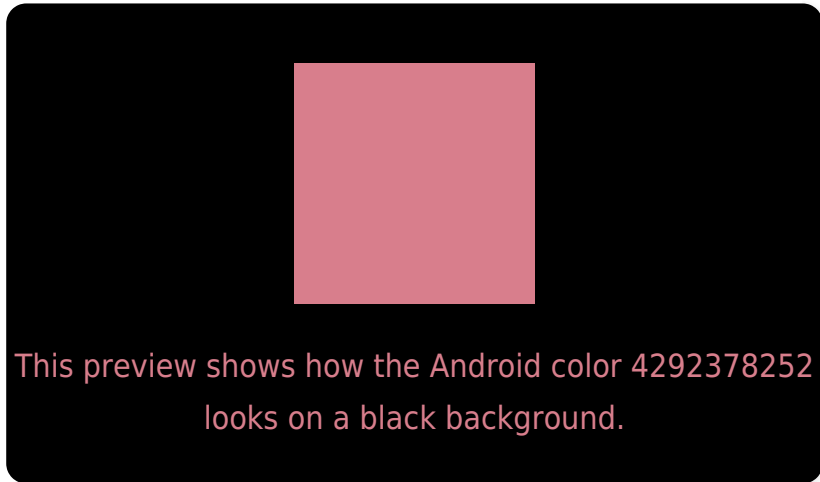
Large Text (above 18pt) WCAG AA × Fail

Any Text WCAG AA × Fail

Large Text (above 18pt) WCAG AAA × Fail

Any Text WCAG AAA × Fail

# Black Background



## Color Contrast Check

Large Text (above 18pt) WCAG AA ✓ Pass

Any Text WCAG AA ✓ Pass

Large Text (above 18pt) WCAG AAA ✓ Pass

Any Text WCAG AAA ✓ Pass

If you want to check with other color combinations, try the [Color Contrast Checker](#).



# Android 4292378252 Background



This preview shows how black text looks on a background with the Android color 4292378252.




This preview shows how white text looks on a background with the Android color 4292378252.

# Color Blindness Simulation

Color vision deficiency is a very complex topic, and I could not describe the different causes any better than Wikipedia does, so if you want to learn more, you should check out their [article about color blindness](#).

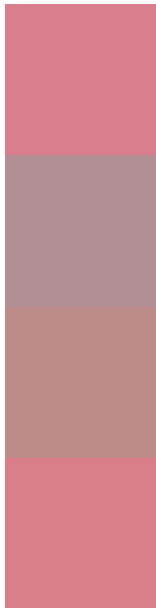
## Dichromacy





**Tritanopia**  
4292378504

# Trichromacy



**Original Color**  
4292378252

**Protanomaly**  
4289826709

**Deuteranomaly**  
4290612105

**Tritanomaly**  
4292378505

# Monochromacy



**Original Color**  
4292378252

**Achromatopsia**  
4288387995

**Achromatomaly**  
4289826966

# CSS Examples

## Text

The CSS property to change the color of the text to Android 4292378252 is called "color". The color property can be set on classes, ids or directly on the HTML element.

This example shows how text in the color `rgb(216, 126, 140)` looks like.

```
.text, #text, p{  
    color:rgb(216, 126, 140)  
}
```

If you want to add a text shadow in that color use the text-shadow property, you can generate a text shadow directly with our [CSS Text Shadow Generator](#).

Here you see how black text with a 4 pixel rgb(216, 126, 140) colored shadow looks like.

```
.shadow{ text-shadow: 4px 4px 2px rgb(216, 126, 140) }
```

## Border

The CSS property to change the border of an element to Android 4292378252 is called "border". The border property can be set on classes, ids or directly on the HTML element.

This example shows the color as border, it can be applied via the CSS property "border" or "border-color".

```
.border, #border, table{ border:4px solid rgb(216, 126, 140) }
```

If only the border color should be changed use the property `border-color`.

```
.border{ border-color:rgb(216, 126, 140) }
```

If you want to add a box shadow in that color use:

Here you see how a box with a 4 pixel `rgb(216, 126, 140)` colored shadow looks like.

```
.boxshadow{ -moz-box-shadow:4px 4px 4px  
4px rgb(216, 126, 140); -webkit-box-  
shadow:4px 4px 4px 4px rgb(216, 126, 140);  
box-shadow:4px 4px 4px 4px rgb(216, 126,  
140) }
```

# Background

The CSS property to change the background color of an element to Android 4292378252 is called "background". The background property can be set on classes, ids or directly on the HTML element.

```
.background, #background, body{  
background: rgb(216, 126, 140) }
```

If only the background color should be changed can be used:

```
.background{ background-color: rgb(216,  
126, 140) }
```

This example shows the color as background, it is applied via the CSS property "background".

To optimize and compress your CSS code, you can use our [online CSS compressor and optimizer](#) based on csstidy. If you want to create a linear or radial gradient as background or border, check our [CSS Gradient Generator](#).



Hey! You found this booklet interesting? Support Converting Colors with the new Membership Option!

The pro membership hides all ads, plus gives you double the colors in the color bucket, and more awesome pro features!

**[Learn more, Memberships starting at \\$2.50/m!](#)**

**Follow me  
on Twitter!**

@ConvertingColor