

Converting Colors

Android(4292384654)

Have a look what the booklet for
Android(4292384654) contains.

Android(4292384654)	3
<i>Conversions</i>	4
<i>Details</i>	6
<i>Harmonies</i>	11
<i>Previews</i>	23
<i>Color Blindness Simulation</i>	26
<i>CSS Examples</i>	29

Color

Android(4292384654)

Conversions

Conversions Part 1

Format	Color
Hex	D8978E
RGB	216, 151, 142
RGB Percent	85%, 59%, 56%
CMY	0.1529, 0.4078, 0.4431
CMYK	0.00, 0.30, 0.34, 0.15
HSL	7°, 49%, 70%
HSV	7°, 34%, 85%
XYZ	44.2680, 38.6851, 30.7250
YIQ	169.4090, 41.6290, 10.9810

Conversions

Conversions Part 2

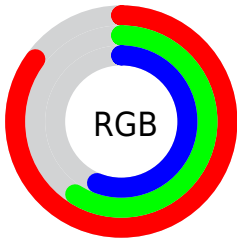
Format	Color
R _Y B	216, 152, 142
Decimal	14194574
CIE Lab	68.52, 23.25, 14.55
CIE LCh	69, 27.427, 32.031
Yxy	38.6851, 0.3894, 0.3403
Android (android.graphics.Color)	4292384654 (0xFFD8978E)
YUV	169.4090, -13.5126, 40.8603
Hunter-Lab	62.1974, 18.1991, 14.2494

Details

The Android color `4292384654` is a light color, and the websafe version is hex `CC9999`. A complement of this color would be `4287549400`, and the grayscale version is `4289374890`.

A 20% lighter version of the original color is `4294954692`, and `4288635996` is the 20% darker color. If you saturate the color by 10%, you get `4292379768`, and if you desaturate by 10%, it is `4292389540`.

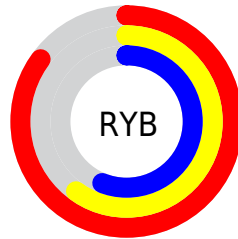
Distribution



Red (85%)

Green (59%)

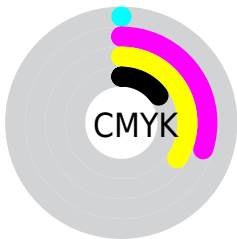
Blue (56%)



Red (85%)

Yellow (60%)

Blue (56%)

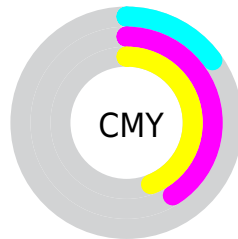


Cyan (0%)

Magenta (30%)

Yellow (34%)

Black (15%)



Cyan (15%)

Magenta (41%)

Yellow (44%)

Brightness & Saturation Gradients

These gradients show how the Android color 4292384654 changes by changing the brightness by 10 percent. The first figure shows a shift by +10% for each color and the second figure -10%.

Similar to the brightness gradients but the following saturation gradients show a change of the Android color 4292384654 by changing the saturation by 10% instead.



4292384654



4292384654

4294967295



4290477428



4294954692



4288635996



4294961888



4286860100

4294967292



4285084718



4283374873



4281796096



4280221697



4278190080



4292384654



4292384654

 4292379768

 4292389540

 4292374883

 4292394425

 4292369997

 4292399311

 4292365112

 4292404196

 4292360226

 4292409082

 4292355340

 4292411391

 4292352512

Harmonies

Analogous

The Analogous color harmony consists of three colors that are next to each other on the color wheel.



4292318630



4292384654



4291599996

Triad

The Triadic color harmony groups three colors that are evenly spaced from another and form a triangle on the color wheel.



4292384654



4286624655



4287277528

Complementary

The Complementary color scheme is a pair of colors which are on the opposite of each other on the color wheel.



4292384654



4287549400

Split Complementary

Split-complementary colors differ from the complementary color scheme. The scheme consists of three colors, the original color and two neighbors of the complement color.



4285116626



4292384654



4284921256

Square

The Square scheme is like the rectangle color scheme, but the four colors are evenly spaced on the color wheel.



4292384654



4288523901



4284200128



4289568977

Rectangle

The Rectangle color scheme consists of four colors that form a rectangle on the color wheel.



4292384654



4290749302



4284200128



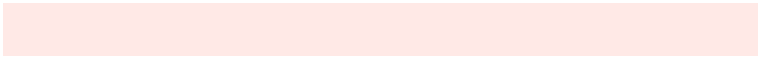
4286491608

Sweetspot

The Sweet Spot groups the original color and five complimentary colors.



4292384654



4294961638



4292382415



4286607984



4278190080



4286611584

Same Dimension

The Same Dimension uses a secret algorithm to generate beautiful new colors.



4292384654



4294943638



4292394126



4285227616



4289402112



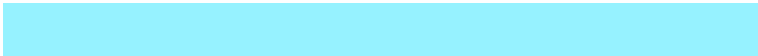
4281009408

Inverse Universe

The Inverse Universe completely reimagines the original color for something new.



4287549400



4288082687



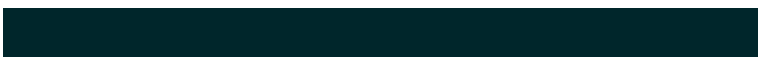
4287539928



4284508779



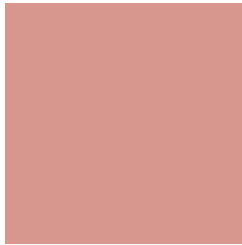
4278228651



4278199851

Previews

White Background



This preview shows how the Android color 4292384654 looks on a white background.

Color Contrast Check

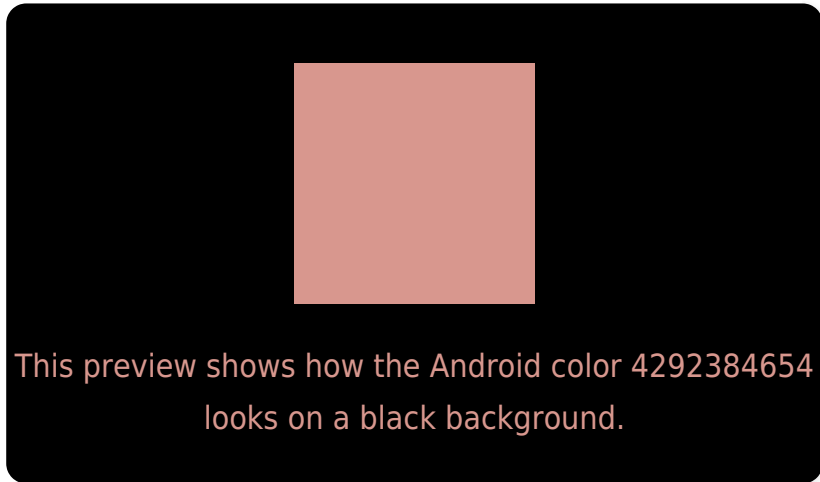
Large Text (above 18pt) WCAG AA × Fail

Any Text WCAG AA × Fail

Large Text (above 18pt) WCAG AAA × Fail

Any Text WCAG AAA × Fail

Black Background



Color Contrast Check

Large Text (above 18pt) WCAG AA ✓ Pass

Any Text WCAG AA ✓ Pass

Large Text (above 18pt) WCAG AAA ✓ Pass

Any Text WCAG AAA ✓ Pass

If you want to check with other color combinations, try the [Color Contrast Checker](#).

Android 4292384654 Background



This preview shows how black text looks on a background with the Android color 4292384654.



This preview shows how white text looks on a background with the Android color 4292384654.

Color Blindness Simulation

Color vision deficiency is a very complex topic, and I could not describe the different causes any better than Wikipedia does, so if you want to learn more, you should check out their [article about color blindness](#).


Dichromacy



Original Color
4292384654

Protanopia
4289701782

Deuteranopia
4290879884



Tritanopia
4292514976

Trichromacy



Original Color
4292384654

Protanomaly
4290683283

Deuteranomaly
4291403149

Tritanomaly
4292449689

Monochromacy



Original Color
4292384654

Achromatopsia
4289309097

Achromatomaly
4290421407

CSS Examples

Text

The CSS property to change the color of the text to Android 4292384654 is called "color". The color property can be set on classes, ids or directly on the HTML element.

This example shows how text in the color `rgb(216, 151, 142)` looks like.

```
.text, #text, p{  
    color:rgb(216, 151, 142)  
}
```

If you want to add a text shadow in that color use the text-shadow property, you can generate a text shadow directly with our [CSS Text Shadow Generator](#).

Here you see how black text with a 4 pixel rgb(216, 151, 142) colored shadow looks like.

```
.shadow{ text-shadow: 4px 4px 2px rgb(216, 151, 142) }
```

Border

The CSS property to change the border of an element to Android 4292384654 is called "border". The border property can be set on classes, ids or directly on the HTML element.

This example shows the color as border, it can be applied via the CSS property "border" or "border-color".

```
.border, #border, table{ border:4px solid rgb(216, 151, 142) }
```

If only the border color should be changed use the property `border-color`.

```
.border{ border-color:rgb(216, 151, 142) }
```

If you want to add a box shadow in that color use:

Here you see how a box with a 4 pixel `rgb(216, 151, 142)` colored shadow looks like.

```
.boxshadow{ -moz-box-shadow:4px 4px 4px  
4px rgb(216, 151, 142); -webkit-box-  
shadow:4px 4px 4px 4px rgb(216, 151, 142);  
box-shadow:4px 4px 4px 4px rgb(216, 151,  
142) }
```

Background

The CSS property to change the background color of an element to Android 4292384654 is called "background". The background property can be set on classes, ids or directly on the HTML element.

```
.background, #background, body{  
background: rgb(216, 151, 142) }
```

If only the background color should be changed can be used:

```
.background{ background-color: rgb(216,  
151, 142) }
```

This example shows the color as background, it is applied via the CSS property "background".

To optimize and compress your CSS code, you can use our [online CSS compressor and optimizer](#) based on csstidy. If you want to create a linear or radial gradient as background or border, check our [CSS Gradient Generator](#).

Hey! You found this booklet interesting? Support Converting Colors with the new Membership Option!

The pro membership hides all ads, plus gives you double the colors in the color bucket, and more awesome pro features!

[Learn more, Memberships starting at \\$2.50/m!](#)

**Follow me
on Twitter!**

@ConvertingColor