

# Converting Colors

Android(4292388256)

Have a look what the booklet for  
Android(4292388256) contains.

<b>Android(4292388256)</b> .....	3
<i><b>Conversions</b></i> .....	4
<i><b>Details</b></i> .....	6
<i><b>Harmonies</b></i> .....	11
<i><b>Previews</b></i> .....	23
<i><b>Color Blindness Simulation</b></i> .....	26
<i><b>CSS Examples</b></i> .....	29

# **Color**

**Android(4292388256)**

# Conversions

## Conversions Part 1

Format	Color
Hex	D8A5A0
RGB	216, 165, 160
RGB Percent	85%, 65%, 63%
CMY	0.1529, 0.3529, 0.3725
CMYK	0.00, 0.24, 0.26, 0.15
HSL	5°, 42%, 74%
HSV	5°, 26%, 85%
XYZ	48.1192, 44.0473, 39.2235
YIQ	179.6790, 32.0010, 9.2570

# Conversions

## Conversions Part 2

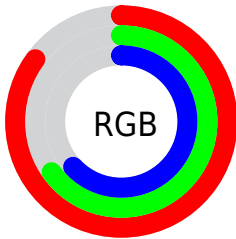
<b>Format</b>	<b>Color</b>
<b>R<sub>YB</sub></b>	216, 165, 160
Decimal	14198176
CIE <sub>Lab</sub>	72.26, 18.07, 9.87
CIE <sub>LCh</sub>	72, 20.588, 28.633
Yxy	44.0473, 0.3662, 0.3352
Android (android.graphics.Color)	4292388256 (0xFFD8A5A0)
YUV	179.6790, -9.7017, 31.8535
Hunter-Lab	66.3681, 13.2745, 11.4173

# Details

The Android color `4292388256` is a light color, and the websafe version is hex `CC9999`. A complement of this color would be `4288730072`, and the grayscale version is `4290032820`.

A 20% lighter version of the original color is `4294958295`, and `4288704877` is the 20% darker color. If you saturate the color by 10%, you get `4292383114`, and if you desaturate by 10%, it is `4292393398`.

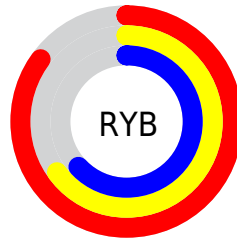
# Distribution



Red (85%)

Green (65%)

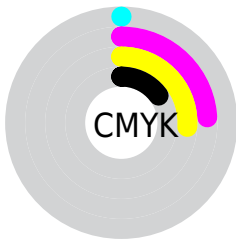
Blue (63%)



Red (85%)

Yellow (65%)

Blue (63%)

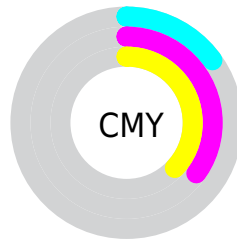


Cyan (0%)

Magenta (24%)

Yellow (26%)

Black (15%)



Cyan (15%)

Magenta (35%)

Yellow (37%)

# Brightness & Saturation Gradients

These gradients show how the Android color 4292388256 changes by changing the brightness by 10 percent. The first figure shows a shift by +10% for each color and the second figure -10%.

Similar to the brightness gradients but the following saturation gradients show a change of the Android color 4292388256 by changing the saturation by 10% instead.



 4292388256

 4292388256

4294967295

 4290546566

 4294958295

 4288704877

 4294965747

 4286928980

 4285219133

 4283574823

 4281931027

 4280614912

 4278190080

 4292388256

 4292388256

 4292383114

 4292393398

 4292378229

 4292398283

 4292373087

 4292403425

 4292367946

 4292408566

 4292363060

 4292411391

 4292357918

 4292352777

 4292350720

# Harmonies

## Analogous

The Analogous color harmony consists of three colors that are next to each other on the color wheel.



4292256947



4292388256



4291864978

# Triad

The Triadic color harmony groups three colors that are evenly spaced from another and form a triangle on the color wheel.



4292388256



4288133789



4288328662

# Complementary

The Complementary color scheme is a pair of colors which are on the opposite of each other on the color wheel.



4292388256



4288730072

# Split Complementary

Split-complementary colors differ from the complementary color scheme. The scheme consists of three colors, the original color and two neighbors of the complement color.



4286953681



4292388256



4286954672

# Square

The Square scheme is like the rectangle color scheme, but the four colors are evenly spaced on the color wheel.



4292388256



4289509008



4286430146



4289965522

# Rectangle

The Rectangle color scheme consists of four colors that form a rectangle on the color wheel.



4292388256



4291210637



4286430146



4287804886

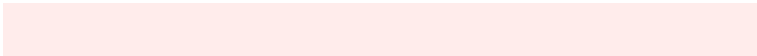


# Sweetspot

The Sweet Spot groups the original color and five complimentary colors.



4292388256



4294962411



4292387027



4286608499



4278190080



4286611584



# Same Dimension

The Same Dimension uses a secret algorithm to generate beautiful new colors.



4292388256



4294948784



4292395424



4285227360



4289400576



4281009152



# Inverse Universe

The Inverse Universe completely reimagines the original color for something new.



4288730072



4289788159



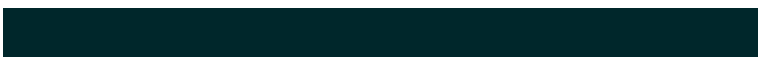
4288722904



4284508779



4278230187



4278200107



# Previews

## White Background



This preview shows how the Android color 4292388256 looks on a white background.

## Color Contrast Check

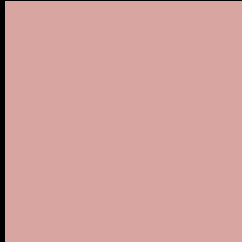
Large Text (above 18pt) WCAG AA × Fail

Any Text WCAG AA × Fail

Large Text (above 18pt) WCAG AAA × Fail

Any Text WCAG AAA × Fail

# Black Background



This preview shows how the Android color 4292388256 looks on a black background.

## Color Contrast Check

Large Text (above 18pt) WCAG AA ✓ Pass

Any Text WCAG AA ✓ Pass

Large Text (above 18pt) WCAG AAA ✓ Pass

Any Text WCAG AAA ✓ Pass

If you want to check with other color combinations, try the [Color Contrast Checker](#).



# Android 4292388256 Background



This preview shows how black text looks on a background with the Android color 4292388256.




This preview shows how white text looks on a background with the Android color 4292388256.

# Color Blindness Simulation

Color vision deficiency is a very complex topic, and I could not describe the different causes any better than Wikipedia does, so if you want to learn more, you should check out their [article about color blindness](#).

## Dichromacy





**Tritanopia**  
4292518831

# Trichromacy



**Original Color**  
4292388256

**Protanomaly**  
4291014052

**Deuteranomaly**  
4291733919

**Tritanomaly**  
4292453546

# Monochromacy



**Original Color**  
4292388256

**Achromatopsia**  
4290032820

**Achromatomaly**  
4290883501

# CSS Examples

## Text

The CSS property to change the color of the text to Android 4292388256 is called "color". The color property can be set on classes, ids or directly on the HTML element.

This example shows how text in the color `rgb(216, 165, 160)` looks like.

```
.text, #text, p{  
    color:rgb(216, 165, 160)  
}
```

If you want to add a text shadow in that color use the text-shadow property, you can generate a text shadow directly with our [CSS Text Shadow Generator](#).

Here you see how black text with a 4 pixel rgb(216, 165, 160) colored shadow looks like.

```
.shadow{ text-shadow: 4px 4px 2px rgb(216, 165, 160) }
```

## Border

The CSS property to change the border of an element to Android 4292388256 is called "border". The border property can be set on classes, ids or directly on the HTML element.

This example shows the color as border, it can be applied via the CSS property "border" or "border-color".

```
.border, #border, table{ border:4px solid rgb(216, 165, 160) }
```

If only the border color should be changed use the property `border-color`.

```
.border{ border-color:rgb(216, 165, 160) }
```

If you want to add a box shadow in that color use:

Here you see how a box with a 4 pixel `rgb(216, 165, 160)` colored shadow looks like.

```
.boxshadow{ -moz-box-shadow:4px 4px 4px  
4px rgb(216, 165, 160); -webkit-box-  
shadow:4px 4px 4px 4px rgb(216, 165, 160);  
box-shadow:4px 4px 4px 4px rgb(216, 165,  
160) }
```

# Background

The CSS property to change the background color of an element to Android 4292388256 is called "background". The background property can be set on classes, ids or directly on the HTML element.

```
.background, #background, body{  
background: rgb(216, 165, 160) }
```

If only the background color should be changed can be used:

```
.background{ background-color: rgb(216,  
165, 160) }
```

This example shows the color as background, it is applied via the CSS property "background".

To optimize and compress your CSS code, you can use our [online CSS compressor and optimizer](#) based on csstidy. If you want to create a linear or radial gradient as background or border, check our [CSS Gradient Generator](#).



Hey! You found this booklet interesting? Support Converting Colors with the new Membership Option!

The pro membership hides all ads, plus gives you double the colors in the color bucket, and more awesome pro features!

**[Learn more, Memberships starting at \\$2.50/m!](#)**

**Follow me  
on Twitter!**

@ConvertingColor