

Converting Colors

Android(4292390826)

Have a look what the booklet for
Android(4292390826) contains.

Android(4292390826)	3
<i>Conversions</i>	4
<i>Details</i>	6
<i>Harmonies</i>	11
<i>Previews</i>	23
<i>Color Blindness Simulation</i>	26
<i>CSS Examples</i>	29

Color

Android(4292390826)

Conversions

Conversions Part 1

Format	Color
Hex	D8AFAA
RGB	216, 175, 170
RGB Percent	85%, 69%, 67%
CMY	0.1529, 0.3137, 0.3333
CMYK	0.00, 0.19, 0.21, 0.15
HSL	7°, 37%, 76%
HSV	7°, 21%, 85%
XYZ	50.9046, 48.1612, 44.6433
YIQ	186.6890, 26.0410, 7.1370

Conversions

Conversions Part 2

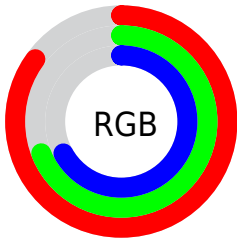
Format	Color
R_{YB}	216, 176, 170
Decimal	14200746
CIE _{Lab}	74.93, 14.12, 8.19
CIE _{LCh}	75, 16.325, 30.108
Yxy	48.1612, 0.3542, 0.3351
Android (android.graphics.Color)	4292390826 (0xFFD8AFAA)
YUV	186.6890, -8.2277, 25.7057
Hunter-Lab	69.3982, 9.4853, 10.4380

Details

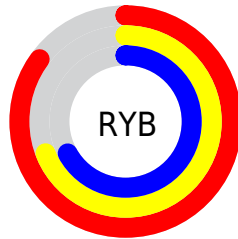
The Android color `4292390826` is a light color, and the websafe version is hex `CC9999`. A complement of this color would be `4289385432`, and the grayscale version is `4290493371`.

A 20% lighter version of the original color is `4294961121`, and `4288772726` is the 20% darker color. If you saturate the color by 10%, you get `4292385940`, and if you desaturate by 10%, it is `4292395712`.

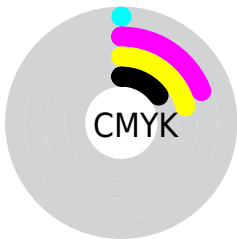
Distribution



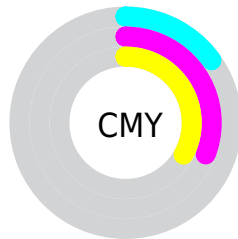
- Red (85%)
- Green (69%)
- Blue (67%)



- Red (85%)
- Yellow (69%)
- Blue (67%)



- Cyan (0%)
- Magenta (19%)
- Yellow (21%)
- Black (15%)



- Cyan (15%)
- Magenta (31%)
- Yellow (33%)

Brightness & Saturation Gradients

These gradients show how the Android color 4292390826 changes by changing the brightness by 10 percent. The first figure shows a shift by +10% for each color and the second figure -10%.

Similar to the brightness gradients but the following saturation gradients show a change of the Android color 4292390826 by changing the saturation by 10% instead.



4292390826



4292390826

4294967295



4290548880



4294961121



4288772726

4294967294



4286996829



4285286982



4283642671



4282064155



4280681984



4278190080



4292390826



4292390826

 4292385940

 4292395712

 4292380799

 4292400853

 4292375913

 4292405739

 4292371028

 4292410623

 4292366142

 4292411391

 4292361000

 4292356115

 4292351744

Harmonies

Analogous

The Analogous color harmony consists of three colors that are next to each other on the color wheel.



4292259513



4292390826



4291933087

Triad

The Triadic color harmony groups three colors that are evenly spaced from another and form a triangle on the color wheel.



4292390826



4288921769



4289247958

Complementary

The Complementary color scheme is a pair of colors which are on the opposite of each other on the color wheel.



4292390826



4289385432

Split Complementary

Split-complementary colors differ from the complementary color scheme. The scheme consists of three colors, the original color and two neighbors of the complement color.



4288200402



4292390826



4288070072

Square

The Square scheme is like the rectangle color scheme, but the four colors are evenly spaced on the color wheel.



4292390826



4290034846



4287742407



4290491858

Rectangle

The Rectangle color scheme consists of four colors that form a rectangle on the color wheel.



4292390826



4291409563



4287742407



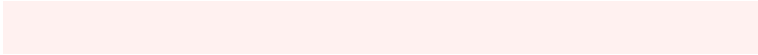
4288854998

Sweetspot

The Sweet Spot groups the original color and five complimentary colors.



4292390826



4294963696



4292389587



4286609527



4278190080



4286611584

Same Dimension

The Same Dimension uses a secret algorithm to generate beautiful new colors.



4292390826



4294952125



4292396714



4285227616



4289401600



4281009408

Inverse Universe

The Inverse Universe completely reimagines the original color for something new.



4289385432



4290640127



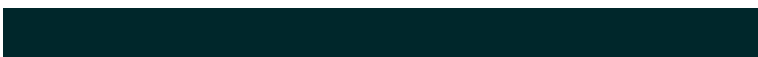
4289379544



4284508779



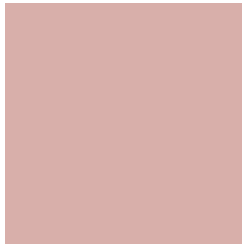
4278229163



4278200107

Previews

White Background



This preview shows how the Android color 4292390826 looks on a white background.

Color Contrast Check

Large Text (above 18pt) WCAG AA × Fail

Any Text WCAG AA × Fail

Large Text (above 18pt) WCAG AAA × Fail

Any Text WCAG AAA × Fail

Black Background



This preview shows how the Android color 4292390826 looks on a black background.

Color Contrast Check

Large Text (above 18pt) WCAG AA ✓ Pass

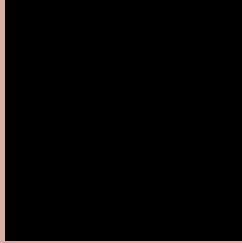
Any Text WCAG AA ✓ Pass

Large Text (above 18pt) WCAG AAA ✓ Pass

Any Text WCAG AAA ✓ Pass

If you want to check with other color combinations, try the [Color Contrast Checker](#).

Android 4292390826 Background



This preview shows how black text looks on a background with the Android color 4292390826.



This preview shows how white text looks on a background with the Android color 4292390826.

Color Blindness Simulation

Color vision deficiency is a very complex topic, and I could not describe the different causes any better than Wikipedia does, so if you want to learn more, you should check out their [article about color blindness](#).


Dichromacy



Original Color
4292390826

Protanopia
4290689199

Deuteranopia
4291867305



Tritanopia
4292521402

Trichromacy



Original Color
4292390826

Protanomaly
4291278253

Deuteranomaly
4292063657

Tritanomaly
4292456116

Monochromacy



Original Color
4292390826

Achromatopsia
4290493371

Achromatomaly
4291213237

CSS Examples

Text

The CSS property to change the color of the text to Android 4292390826 is called "color". The color property can be set on classes, ids or directly on the HTML element.

This example shows how text in the color `rgb(216, 175, 170)` looks like.

```
.text, #text, p{  
    color:rgb(216, 175, 170)  
}
```

If you want to add a text shadow in that color use the text-shadow property, you can generate a text shadow directly with our [CSS Text Shadow Generator](#).

Here you see how black text with a 4 pixel rgb(216, 175, 170) colored shadow looks like.

```
.shadow{ text-shadow: 4px 4px 2px rgb(216, 175, 170) }
```

Border

The CSS property to change the border of an element to Android 4292390826 is called "border". The border property can be set on classes, ids or directly on the HTML element.

This example shows the color as border, it can be applied via the CSS property "border" or "border-color".

```
.border, #border, table{ border:4px solid rgb(216, 175, 170) }
```

If only the border color should be changed use the property `border-color`.

```
.border{ border-color:rgb(216, 175, 170) }
```

If you want to add a box shadow in that color use:

Here you see how a box with a 4 pixel `rgb(216, 175, 170)` colored shadow looks like.

```
.boxshadow{ -moz-box-shadow:4px 4px 4px  
4px rgb(216, 175, 170); -webkit-box-  
shadow:4px 4px 4px 4px rgb(216, 175, 170);  
box-shadow:4px 4px 4px 4px rgb(216, 175,  
170) }
```

Background

The CSS property to change the background color of an element to Android 4292390826 is called "background". The background property can be set on classes, ids or directly on the HTML element.

```
.background, #background, body{  
background: rgb(216, 175, 170) }
```

If only the background color should be changed can be used:

```
.background{ background-color: rgb(216,  
175, 170) }
```

This example shows the color as background, it is applied via the CSS property "background".

To optimize and compress your CSS code, you can use our [online CSS compressor and optimizer](#) based on csstidy. If you want to create a linear or radial gradient as background or border, check our [CSS Gradient Generator](#).

Hey! You found this booklet interesting? Support Converting Colors with the new Membership Option!

The pro membership hides all ads, plus gives you double the colors in the color bucket, and more awesome pro features!

[Learn more, Memberships starting at \\$2.50/m!](#)

**Follow me
on Twitter!**

@ConvertingColor