

Converting Colors

Android(4292391603)

Have a look what the booklet for
Android(4292391603) contains.

Android(4292391603)	3
<i>Conversions</i>	4
<i>Details</i>	6
<i>Harmonies</i>	11
<i>Previews</i>	23
<i>Color Blindness Simulation</i>	26
<i>CSS Examples</i>	29

Color

Android(4292391603)

Conversions

Conversions Part 1

Format	Color
Hex	D8B2B3
RGB	216, 178, 179
RGB Percent	85%, 70%, 70%
CMY	0.1529, 0.3020, 0.2980
CMYK	0.00, 0.18, 0.17, 0.15
HSL	358°, 33%, 77%
HSV	358°, 18%, 85%
XYZ	52.3760, 49.6944, 49.4793
YIQ	189.4760, 22.3270, 8.3670

Conversions

Conversions Part 2

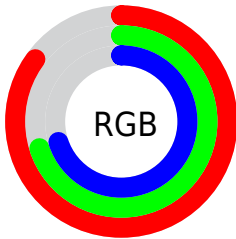
Format	Color
R _Y B	216, 178, 179
Decimal	14201523
CIE Lab	75.88, 13.88, 4.65
CIE LCh	76, 14.641, 18.531
Yxy	49.6944, 0.3456, 0.3279
Android (android.graphics.Color)	4292391603 (0xFFD8B2B3)
YUV	189.4760, -5.1647, 23.2615
Hunter-Lab	70.4942, 9.2574, 7.7308

Details

The Android color `4292391603` is a light color, and the websafe version is hex `CC9999`. A complement of this color would be `4289910999`, and the grayscale version is `4290690750`.

A 20% lighter version of the original color is `4294961899`, and `4288773502` is the 20% darker color. If you saturate the color by 10%, you get `4292385950`, and if you desaturate by 10%, it is `4292397256`.

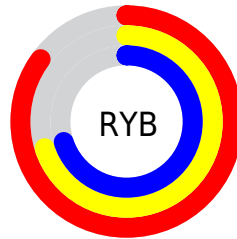
Distribution



Red (85%)

Green (70%)

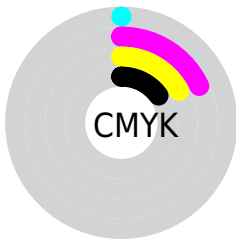
Blue (70%)



Red (85%)

Yellow (70%)

Blue (70%)

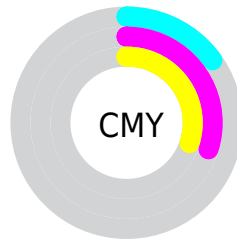


Cyan (0%)

Magenta (18%)

Yellow (17%)

Black (15%)



Cyan (15%)

Magenta (30%)

Yellow (30%)

Brightness & Saturation Gradients

These gradients show how the Android color 4292391603 changes by changing the brightness by 10 percent. The first figure shows a shift by +10% for each color and the second figure -10%.

Similar to the brightness gradients but the following saturation gradients show a change of the Android color 4292391603 by changing the saturation by 10% instead.

 4292391603

 4292391603

4294967295

 4290549656

 4294961899

 4288773502

 4286997605

 4285287501

 4283708727

 4282130465

 4280683019

 4278190080

 4292391603

 4292391603

 4292385950

 4292397256

 4292380553

 4292402653

 4292374900

 4292408306

 4292369503

 4292411391

 4292363850

 4292358197

 4292352800

 4292347147

 4292345862

Harmonies

Analogous

The Analogous color harmony consists of three colors that are next to each other on the color wheel.



4292063937



4292391603



4292195495

Triad

The Triadic color harmony groups three colors that are evenly spaced from another and form a triangle on the color wheel.



4292391603



4289577129



4289117909

Complementary

The Complementary color scheme is a pair of colors which are on the opposite of each other on the color wheel.



4292391603



4289910999

Split Complementary

Split-complementary colors differ from the complementary color scheme. The scheme consists of three colors, the original color and two neighbors of the complement color.



4288397775



4292391603



4288725941

Square

The Square scheme is like the rectangle color scheme, but the four colors are evenly spaced on the color wheel.



4292391603



4290624929



4288267203



4290230740

Rectangle

The Rectangle color scheme consists of four colors that form a rectangle on the color wheel.



4292391603



4291803042



4288267203



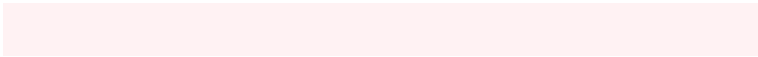
4288856020

Sweetspot

The Sweet Spot groups the original color and five complimentary colors.



4292391603



4294963955



4292326104



4286609528



4278190080



4286611584

Same Dimension

The Same Dimension uses a secret algorithm to generate beautiful new colors.



4292391603



4294953419



4292396210



4285227105



4289396740



4281008129

Inverse Universe

The Inverse Universe completely reimagines the original color for something new.



4292391603



4294953419



4289906392



4285227105



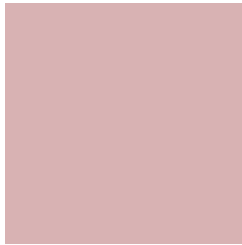
4289396740



4281008129

Previews

White Background



This preview shows how the Android color 4292391603 looks on a white background.

Color Contrast Check

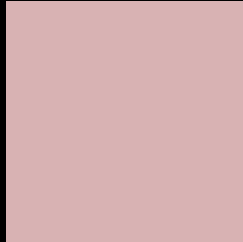
Large Text (above 18pt) WCAG AA × Fail

Any Text WCAG AA × Fail

Large Text (above 18pt) WCAG AAA × Fail

Any Text WCAG AAA × Fail

Black Background



This preview shows how the Android color 4292391603 looks on a black background.

Color Contrast Check

Large Text (above 18pt) WCAG AA ✓ Pass

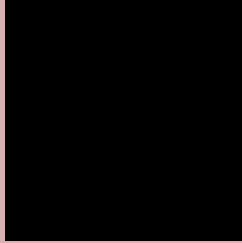
Any Text WCAG AA ✓ Pass

Large Text (above 18pt) WCAG AAA ✓ Pass

Any Text WCAG AAA ✓ Pass

If you want to check with other color combinations, try the [Color Contrast Checker](#).

Android 4292391603 Background



This preview shows how black text looks on a background with the Android color 4292391603.



This preview shows how white text looks on a background with the Android color 4292391603.

Color Blindness Simulation

Color vision deficiency is a very complex topic, and I could not describe the different causes any better than Wikipedia does, so if you want to learn more, you should check out their [article about color blindness](#).

Dichromacy

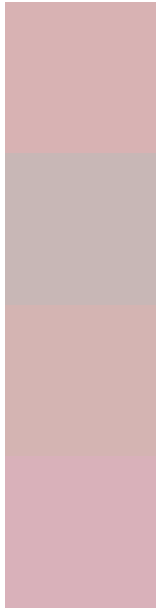


Original Color
4292391603

Protanopia
4290755256

Deuteranopia
4291933618

Trichromacy



Original Color
4292391603

Protanomaly
4291344310

Deuteranomaly
4292129970

Tritanomaly
4292456890

Monochromacy



Original Color
4292391603

Achromatopsia
4290624957

Achromatomaly
4291279289

CSS Examples

Text

The CSS property to change the color of the text to Android 4292391603 is called "color". The color property can be set on classes, ids or directly on the HTML element.

This example shows how text in the color `rgb(216, 178, 179)` looks like.

```
.text, #text, p{  
    color:rgb(216, 178, 179)  
}
```

If you want to add a text shadow in that color use the text-shadow property, you can generate a text shadow directly with our [CSS Text Shadow Generator](#).

Here you see how black text with a 4 pixel rgb(216, 178, 179) colored shadow looks like.

```
.shadow{ text-shadow: 4px 4px 2px rgb(216, 178, 179) }
```

Border

The CSS property to change the border of an element to Android 4292391603 is called "border". The border property can be set on classes, ids or directly on the HTML element.

This example shows the color as border, it can be applied via the CSS property "border" or "border-color".

```
.border, #border, table{ border:4px solid rgb(216, 178, 179) }
```

If only the border color should be changed use the property `border-color`.

```
.border{ border-color:rgb(216, 178, 179) }
```

If you want to add a box shadow in that color use:

Here you see how a box with a 4 pixel `rgb(216, 178, 179)` colored shadow looks like.

```
.boxshadow{ -moz-box-shadow:4px 4px 4px  
4px rgb(216, 178, 179); -webkit-box-  
shadow:4px 4px 4px 4px rgb(216, 178, 179);  
box-shadow:4px 4px 4px 4px rgb(216, 178,  
179) }
```

Background

The CSS property to change the background color of an element to Android 4292391603 is called "background". The background property can be set on classes, ids or directly on the HTML element.

```
.background, #background, body{  
background: rgb(216, 178, 179) }
```

If only the background color should be changed can be used:

```
.background{ background-color: rgb(216,  
178, 179) }
```

This example shows the color as background, it is applied via the CSS property "background".

To optimize and compress your CSS code, you can use our [online CSS compressor and optimizer](#) based on csstidy. If you want to create a linear or radial gradient as background or border, check our [CSS Gradient Generator](#).

Hey! You found this booklet interesting? Support Converting Colors with the new Membership Option!

The pro membership hides all ads, plus gives you double the colors in the color bucket, and more awesome pro features!

[Learn more, Memberships starting at \\$2.50/m!](#)

**Follow me
on Twitter!**

@ConvertingColor